

Mycom 320SU-L Booster Rotary Screw Compressor Package - 250 HP

Mfg: Mycom

Model: 320SU-L

Stock No: DTTC805

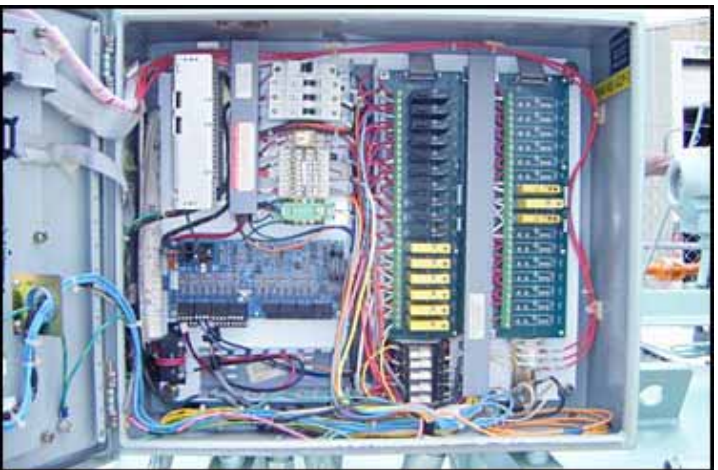
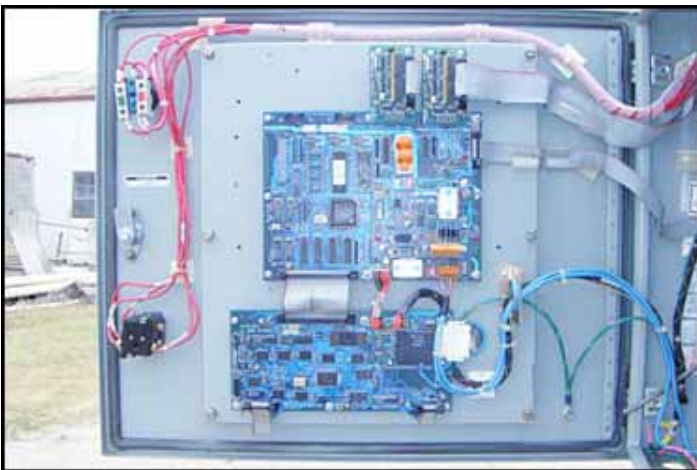
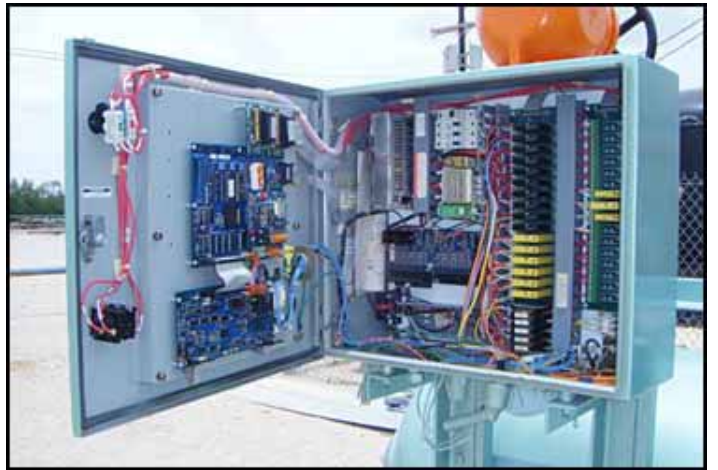
Serial No: 3251188

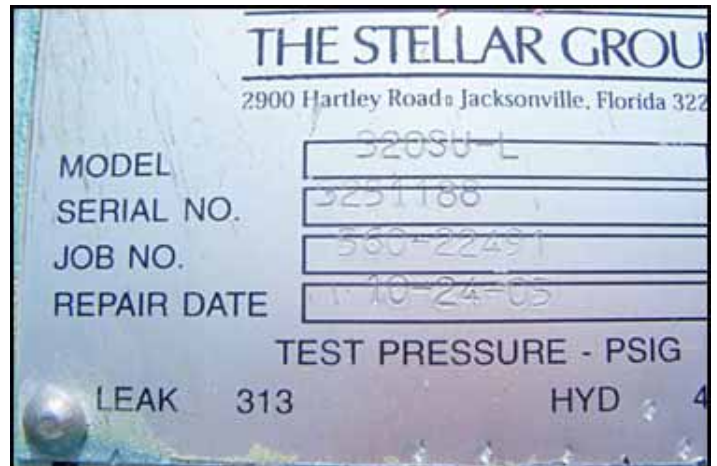
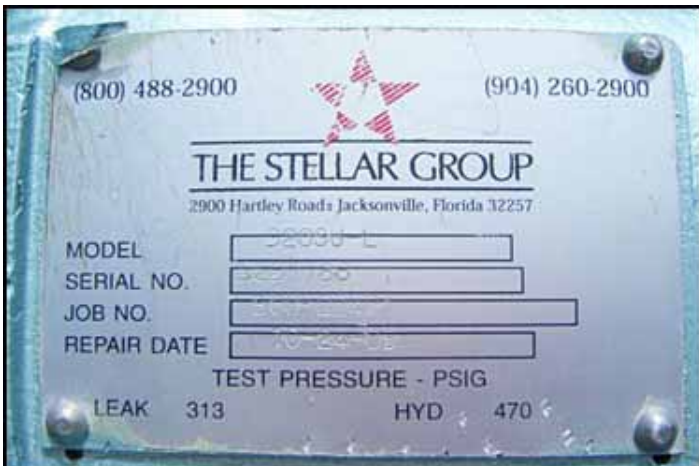
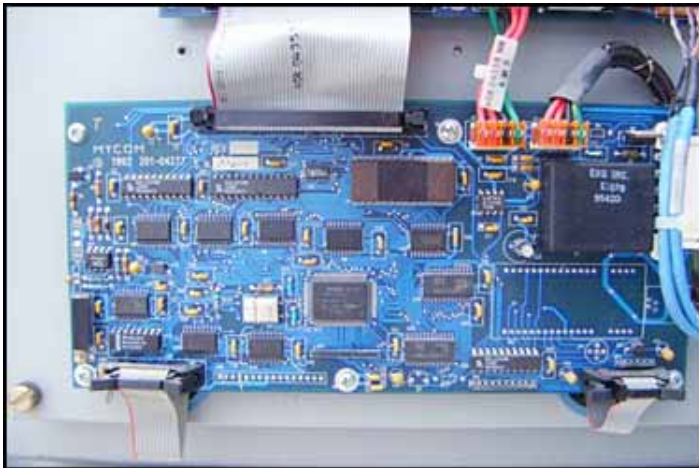
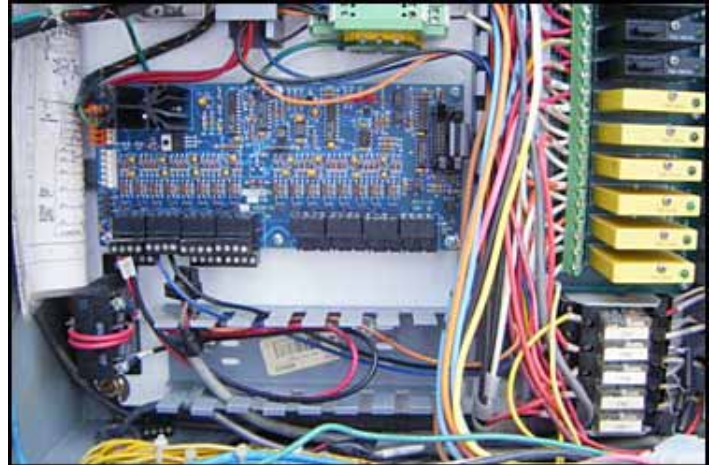
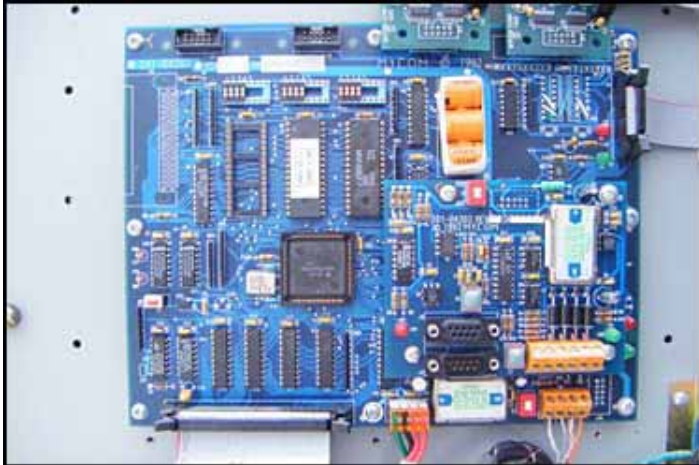
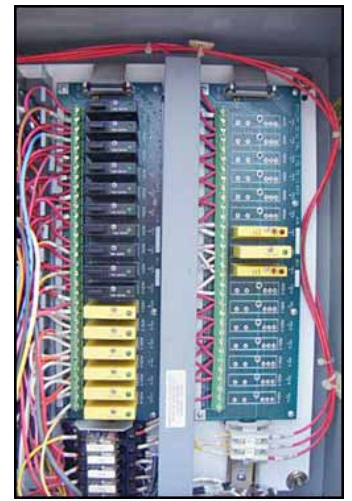
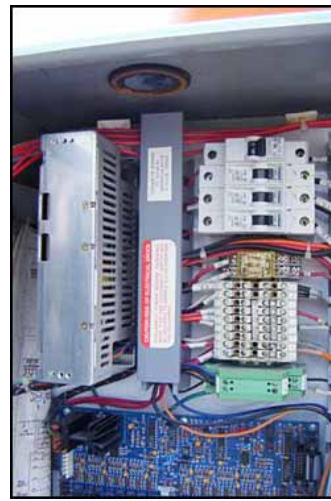
Mycom 320SU-L Booster Rotary Screw Compressor Package. Model: 320SU-L. S/N: 3251188. Leak test pressure: 313 psig. Hydrostatic test pressure: 470 psig. Nominal capacity: 188.0 Tons at 245 bhp with a -45°F suction pressure and a 20°F discharge temperature. Brake hp per ton: 1.303. Vi setting: 2.6. Displacement: 2,230 cfm. Crocker Wheeler electric motor, 250 hp, 3550 rpm, 2300/4160 V, 55/30 amps, 60 Hz, 3 phase. E. L. Nickell Company oil separator: National Board: 20650, MAWP: 250 psig. at 650°F to -20°F. Viking rotary pump, Model: AL 4195, S/N: 11320205. Mycom Mypro-M control panel. Inlet: 8 in. suction. Outlet: 5 in. discharge. Overall dimensions: 15 ft. 6 in. L x 4 ft. 7 in. W x 7 ft. 4 in. H. (SR500). (ACN1192)











(800) 488-2900

(904) 260-2900



THE STELLAR GROUP

2900 Hartley Road, Jacksonville, Florida 32257

MODEL	3203U-L
SERIAL NO.	3251188
JOB NO.	580-22491
REPAIR DATE	10-24-05

TEST PRESSURE - PSIG

LEAK 313

HYD 470

THE STELLAR GROUP

2900 Hartley Road, Jacksonville, Florida 32257

MODEL	3203U-L
SERIAL NO.	3251188
JOB NO.	580-22491
REPAIR DATE	10-24-05

TEST PRESSURE - PSIG

LEAK 313

HYD 470

