

## FES Mycom Screw Booster Compressor Package-250 HP

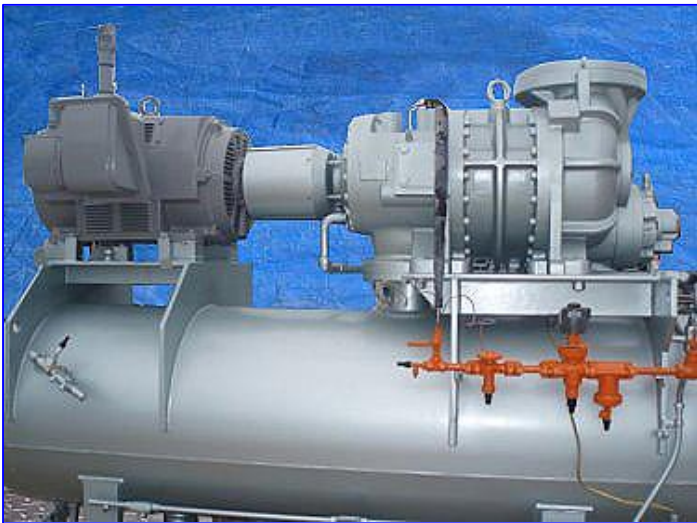
Mfg: FES Mycom

Model: 320 SU-L

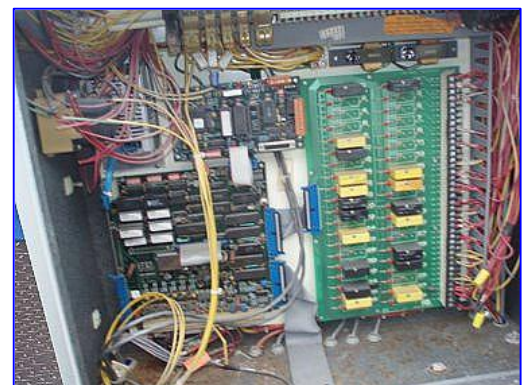
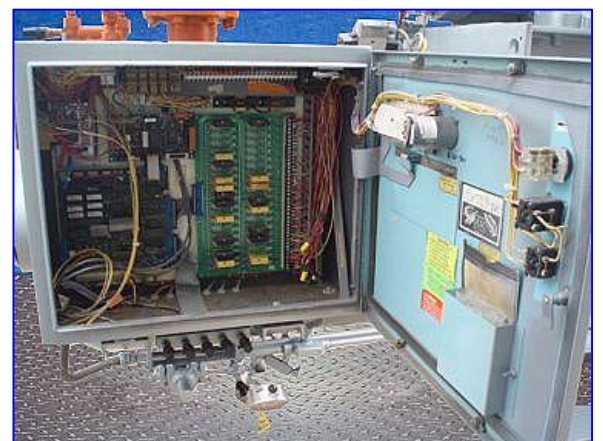
Stock No: DTTC810.

Serial No: 3251324

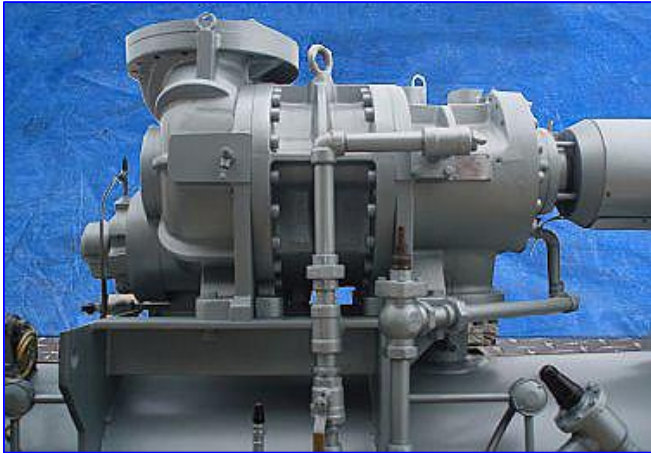
FES Mycom Screw Booster Compressor Package-250 HP. Model: 320 SU-L. S/N: 3251324. Contract number: 87-0239-0301-09. Leak test pressure: 313 psig. Hydrostatic test pressure: 470 psig. Suction pressure: 12 in. Hg @ -45 °F. Discharge pressure: 33 psi @ 20 °F. Capacity: 188.0 TR. Brake hp: 245.0. Brake hp per ton: 1.303. Compressor run time: 1,462 hrs since rebuild. FES Oil Separator, Natq Bd: 3190, maximum working pressure: 250 psi, minimum working temperature: -20 °F, maximum temperature: 200 °F, head radius: 2:1, head thickness: 0.375 in., shell thickness: 0.375 in. Teco Motor, 250 hp, 3555 rpm, 2300/4100 V, 53/31 amps, 60 Hz. Viking Rotary Pump, Model: AL4155, S/N: 11846989. Motor, 7-1/2 hp, 1175 rpm, 230/460 V, 20.4/10 amps, 60 Hz. GEA Micro II controller. Inlets: (1) 16 in. dia. flange. Outlets: (1) 4 in. dia. ammonia port. Overall dimensions: 15 ft. 5 in. L x 57-1/2 in W x 88 in. H. Hours run 14,625.



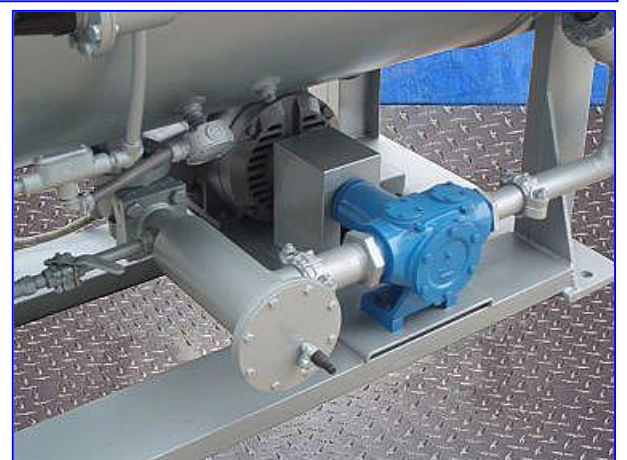
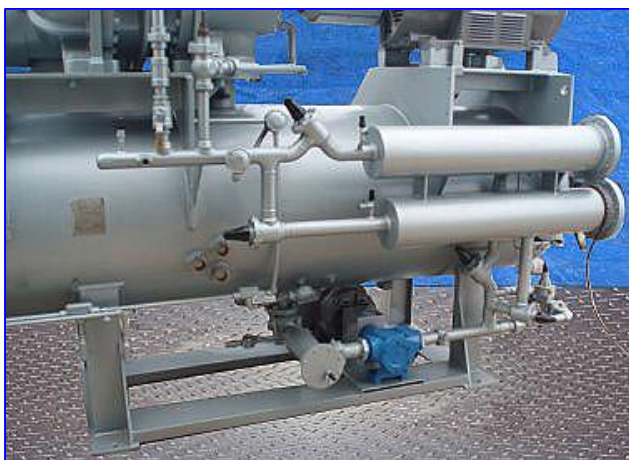
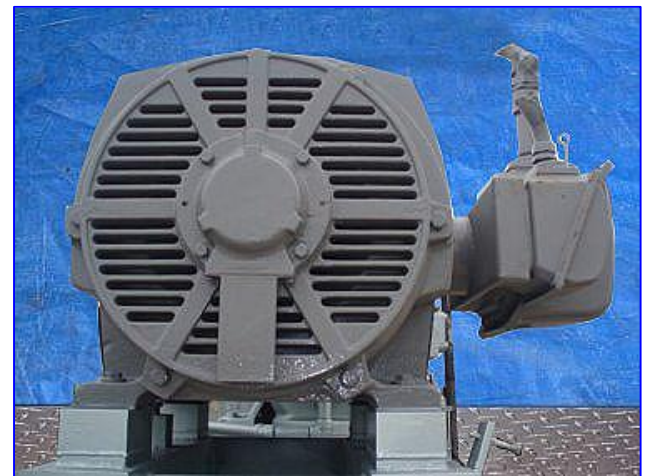
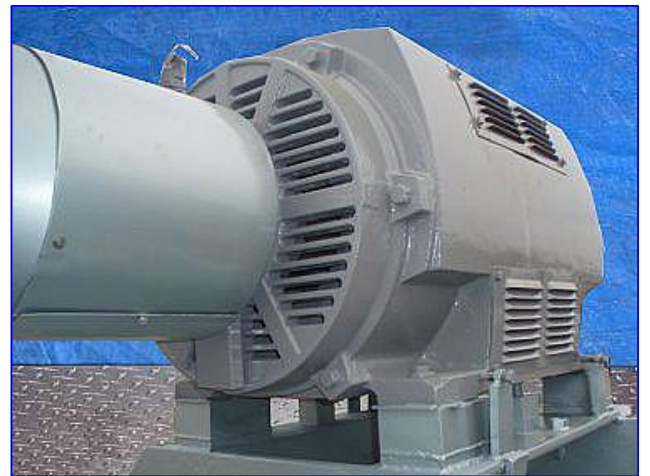
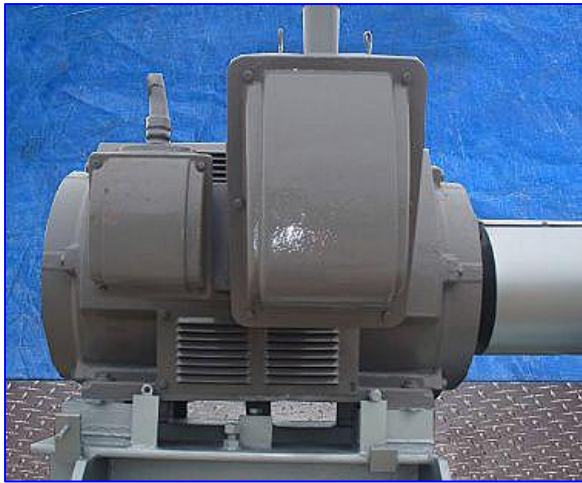








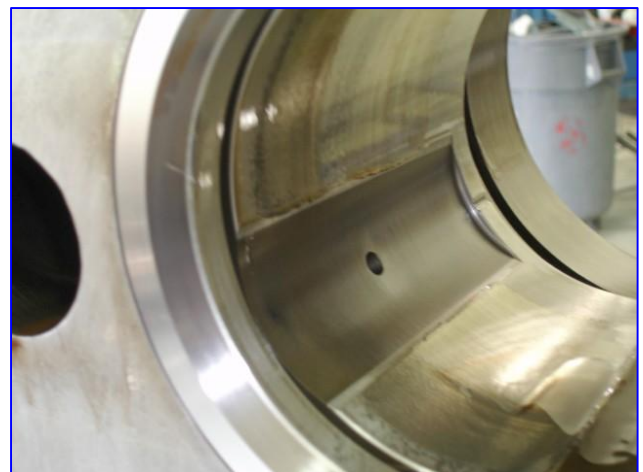
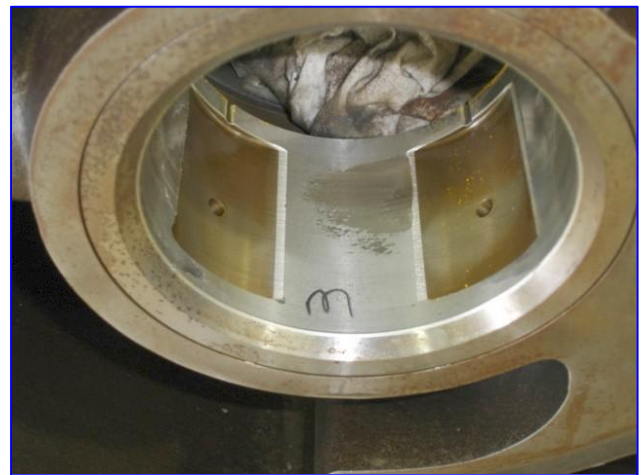
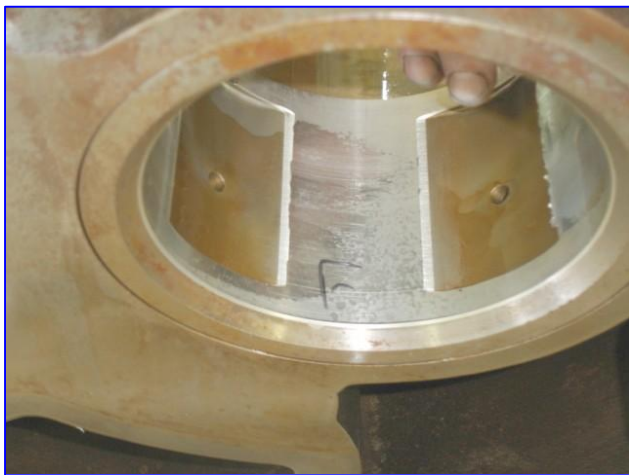
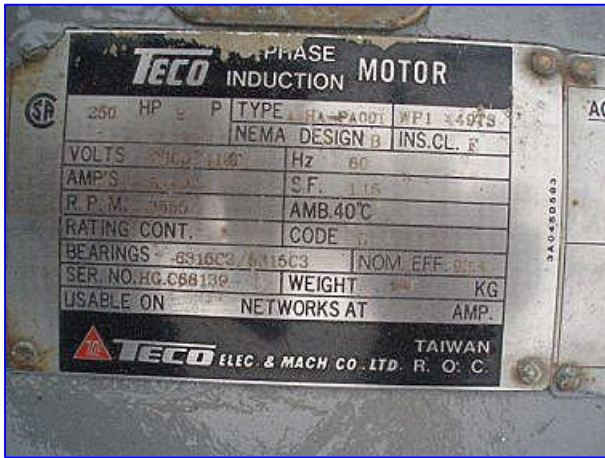




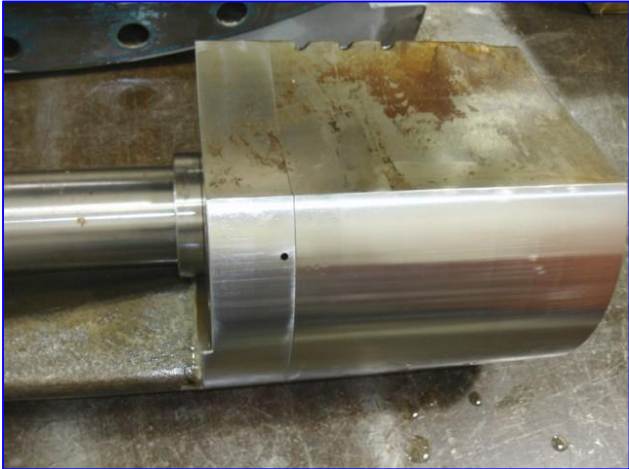












# SCREW COMPRESSOR INSPECTION REPORT

Customer Tropicana Warranty / Service 560-22493

Compressor Type Mycom Model # 320SU-L Serial # 3251324 X#         

Customer Report and/or Complaint : \_\_\_\_\_

Analysis of Failure\_\_\_\_\_

Date of Inspection 7-29-05 Inspected by M.M.

## TORQUES

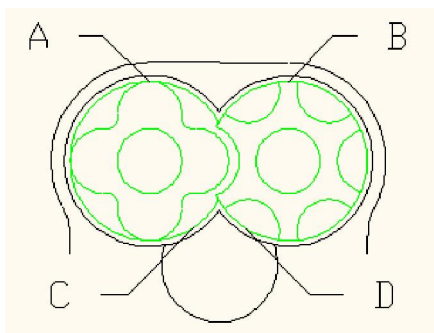
Outer Race (M) \_\_\_\_\_ Inner Race (M) \_\_\_\_\_

Outer Race (F) \_\_\_\_\_ Inner Race (F) \_\_\_\_\_

## CLEARANCES

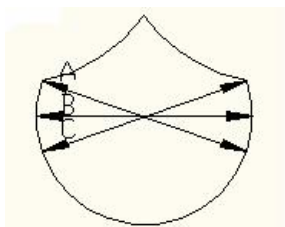
Axial Float (M) OK Suction End (M) OK Discharge End (M) .004

Axial Float (F) OK Suction End (F) OK Discharge End (F) .004

Runout (Male Shaft) .001

(A) Male rotor to cylinder discharge end .012  
(B) Female rotor to cylinder discharge end .014  
(C) Male rotor to slide valve .004  
(D) Female rotor to slide valve .003

## SLIDE VALVE



Suction End

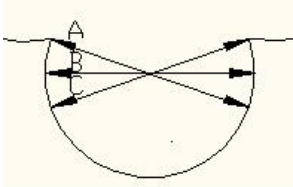
(A) 8.069  
(B) 8.069  
(C) 8.070

Discharge End

$$\begin{array}{r} 8.069 \\ \hline 8.069 \\ \hline 8.069 \end{array}$$
Slide valve VI 3.6

Double or Single hyd. Double

## SLIDE VALVE CYLINDER



Suction End

(A) 8.073  
(B) 8.073  
(C) 8.073

Discharge End

$$\begin{array}{r} 8.073 \\ \hline 8.073 \\ \hline 8.073 \end{array}$$
**SEAL INFORMATION:**☐ Dunham Bush☐ Howden

8                      8B                      9B

### DRIVE RING CONDITION



MYCOM ☒ V-Ring Style ☐ BOS (V-series) ☐ FES

SEAL CONDITION & JOURNAL DIAMETER OK 3.543

ROTOR CONDITION : (M) Good  
(F) Good

ROTOR JOURNAL CONDITION: (M) OK Disc. 5.514 Suct. 5.513  
(F) OK Disc. 5.513 Suct. 5.513

GUIDE BLOCK WITH CLEARANCES : .002 ☒ Standard ☐ Oversized

GUIDE PIN CONDITION OK

SLIDE VALVE CONDITION Bottom Marked **CHROMED** XXX **METALIZED**

SLIDE VALVE SPINDLE OK

**THRUST BEARING CONDITION**

(M) Good  
(F) Good

**THRUST BEARING RETAINER**

(M) Good  
(F) Good

SUCTION HEAD OK

SUCTION SLEEVE BEARINGS (M) Wiped (F) Wiped

DISCHARGE HEAD OK

DISCHARGE SLEEVE BEARINGS (M) Wiped (F) Wiped

LIQUID INJECTION ANGLE 59° & Top

UNLOADER PISTON & CYLINDER CONDITION OK

END COVER INJECTION TUBE ASSEMBLY OK

BALANCE PISTON & SLEEVE CONDITION W/CLEARANCES Some slight wear .002

INDICATOR ASSEMBLY CONDITION OK

APPROXIMATE OPERATION HOURS N/A

FLANGES PRESENT: \_\_\_\_\_

Suction Yes Discharge Yes

**REMARKS**

\_\_\_\_\_  
\_\_\_\_\_  
\_\_\_\_\_  
\_\_\_\_\_

***SCREW COMPRESSOR BUILD SHEET***

CUSTOMER Tropicana

WARRANT/SERVICE # 560-22493

REPAIR DATE 8/13/2005

REPAIRED BY M.M. & J.R.

COMPRESSOR TYPE Mycom MODEL 320SU-L SERIAL # 3251324

**ASSEMBLED CLEARANCES:**

MALE ROTOR: DISCHARGE .004

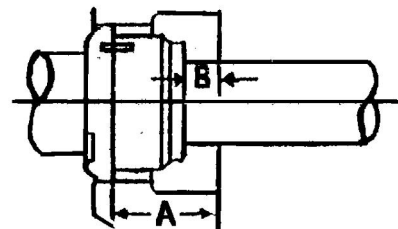
FEMALE ROTOR: DISCHARGE .004

RUNOUT .000

**D/B SEAL**

A \_\_\_\_\_

B \_\_\_\_\_



**TYPE OF SEAL**

**CAPACITY & LIQUID INJ.**



D/B	MYCOM
8	CRANE
8B	MYCOM
9B	BOS

TABS BENT OVER Yes

SLIDE VALVE TEST WITH AIR PRESSURE OK

THRUST BEARING MANUFACTURE & SIZE:

PROBLEMS BUILDING MACHINE: OK

PARTS ADDED TO MACHINE:

SEAL PARTS

LOCKNUTS & LOCKWASHERS

THRUST BEARINGS

BALANCE PISTON & SLEEVE

PARTS MACHINED & METAL REMOVED: None

SLIDE VALVE Vi 2.6

DISCHARGE HEAD Vi 2.6

LIQUID INJ. ANGLE Low Port Only

SLIDE VALVE STROKE N/A

LEAK TEST OK

GASKETS & O-RINGS

GUIDE BLOCK & PIN

SLEEVE BEARINGS