

FES 575B / Mycom 250LUD Screw Booster Compressor Package - 700 HP

Mfg: FES/Mycom

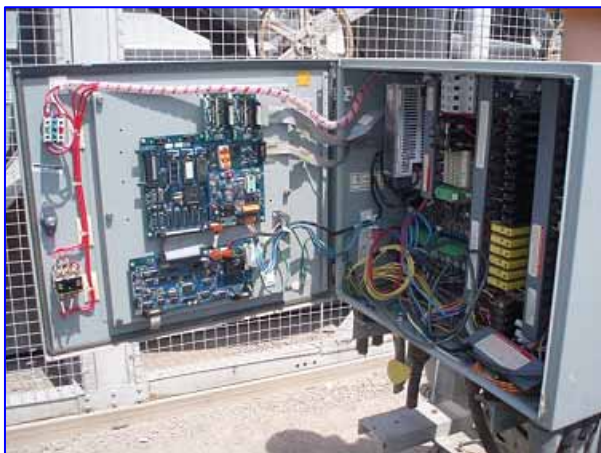
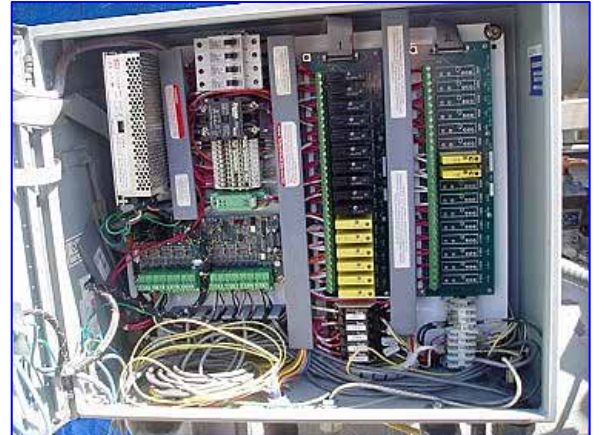
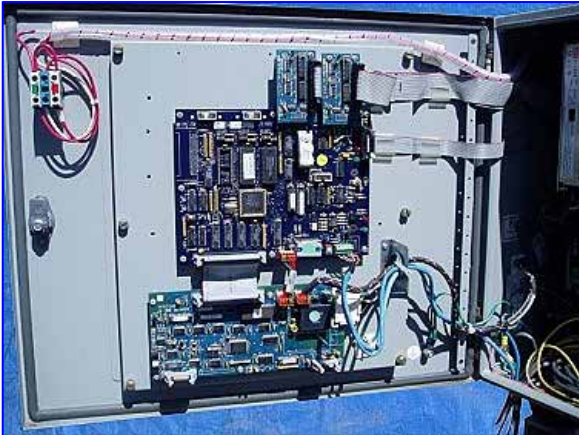
Model: 575B / 250LUD 3.6Vi

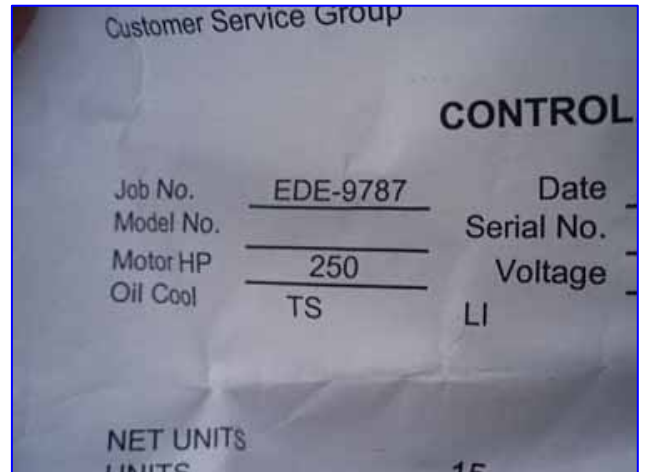
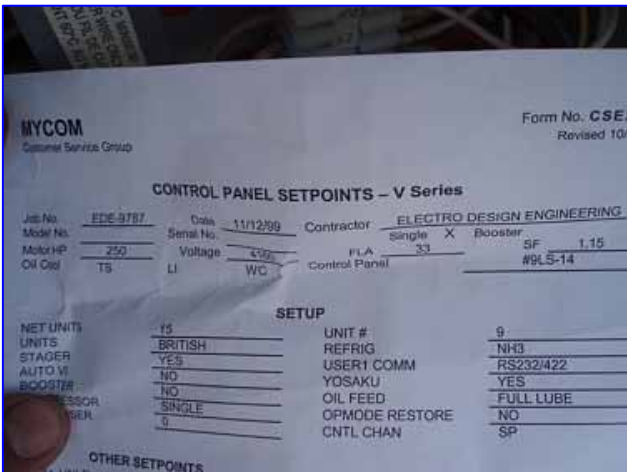
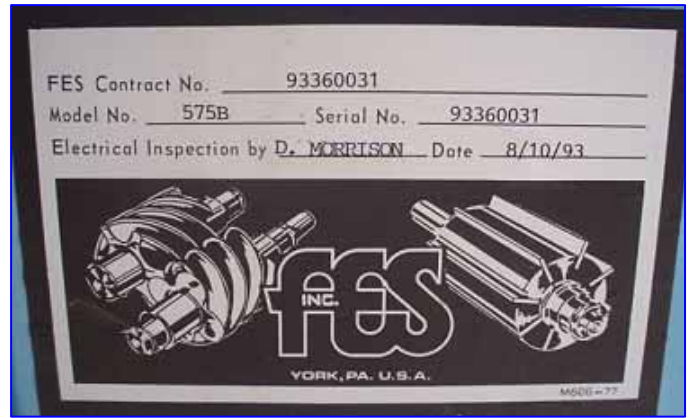
Stock No: DTTC818

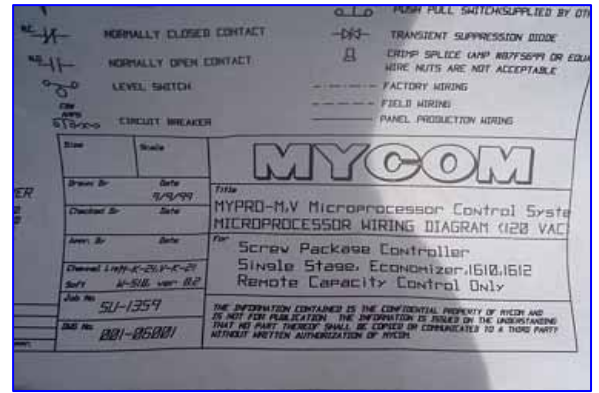
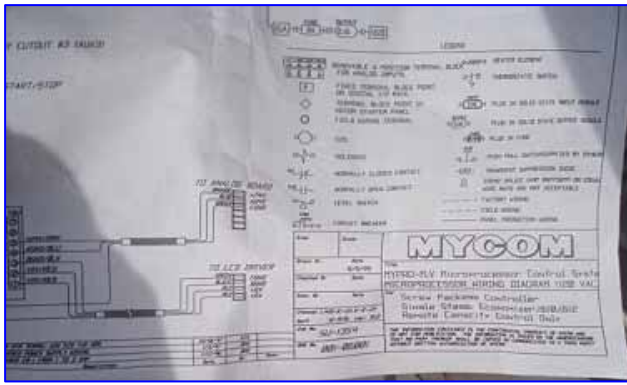
Serial No: 2512369

FES 575B / Mycom 250LUD Screw Booster Compressor Package -700 HP. Model: 575B / 250LUD 3.6Vi. S/N: 2512369. Contract number: SU-1359. Drawing number: 001-06001. Leak test pressure: 313 psig. Hydrostatic test pressure: 470 psig. Suction pressure: 33 psi @ 20 °F. Discharge pressure: 180 psi @ 95°F. Capacity: last used with R-717 producing 598.6 tons at 598.6 bhp. Brake hp per ton: 1.163. Vi setting: 3.6. Displacement: 1,670 cfm. FES oil separator, S/N: 900529, Nat'l Bd: 1759, maximum working pressure: 250 psi, maximum temperature: 300 °F, minimum temperature: -20 °F. Reliance motor, 700 hp, 3570 rpm, 2300/4000 V, 87.0/151.00 amps, 60 Hz, 3 phase. Viking rotary pump with motor, Model: AL4195. S/N: 11856652. Mycom Mypro-M control panel. Overall dimensions: 12 ft. 11 in. L x 4 ft. 6 in. W x 7 ft. 9 ½ in. H. (SR550) (ACN950).









Tropicana			F
DRAWING TITLE MACHINE ROOM 14 MYCOM PANEL WIRING DIAGRAM			
AREA	JOB NO.		10
MACHINE ROOM 14	EDE-0955		
D	DWG. NO.	REV.	10
	11-0750-E2-1187 3/5	2	

 FGND DGND +5V +5V	Drawn By	Date	WJL Title MYPRO-M.V. Microprocessor Control System MICROPROCESSOR WIRING DIAGRAM (128 VAC) For Screw Package Controller Single Stage Economizer (S101, S102 Remote Capacity Control Only) THE INFORMATION CONTAINED IS THE CONFIDENTIAL PROPERTY OF TROPICANA INC. AND IS NOT FOR PUBLICATION. THE INFORMATION IS ISSUED ON THE UNDERSTANDING THAT NO PART THEREOF SHALL BE COPIED OR COMMUNICATED TO A THIRD PARTY WITHOUT WRITTEN AUTHORIZATION OF TROPICANA INC.
		9/9/99	
	Checked By	Date	
	Appr. By	Date	
	Channel List: K-21, V-K-21	Soft: W-51B, ver. B2	
	Job No.	5U-1359	
DMS No.	001-06001		
Dr	Appr.		

ELECTRO DESIGN ENGINEERING, INC. Electrical and Instrumentation Engineering and Construction 1000 West 10th Street, Suite 100 Bismarck, ND 58102 (701) 755-1111	
AS-BUILT WIRING DIAGRAM ONLY NOT FOR CONSTRUCTION	
DESIGNED BY	SCALE
CHECKED BY	DATE
Tropicana	
DRAWING TITLE MACHINE ROOM 14 MYCOM PANEL WIRING DIAGRAM	
AREA	JOB NO.
MACHINE ROOM 14	EDE-0955
D	DWG. NO.
11-0750-E2-1187 3/5	REV.
	2