

**FES 575 / Mycom 250L Screw Compressor Package - 700 HP**

**Mfg: FES Mycom**

**Model: 575 / 250L**

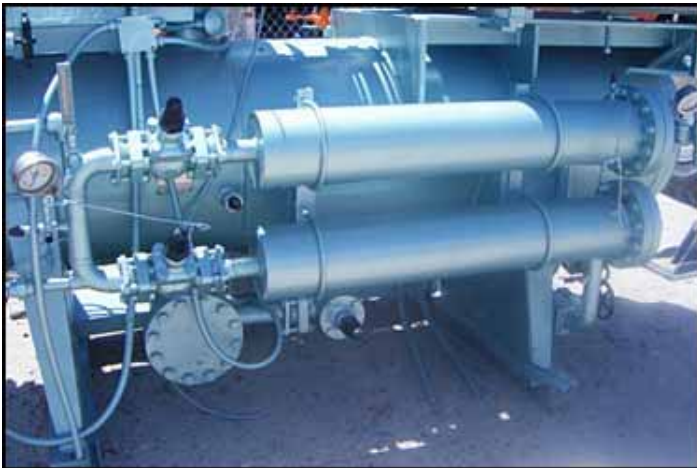
**Stock No.: DTTC830**

**Serial No.: 2512853**

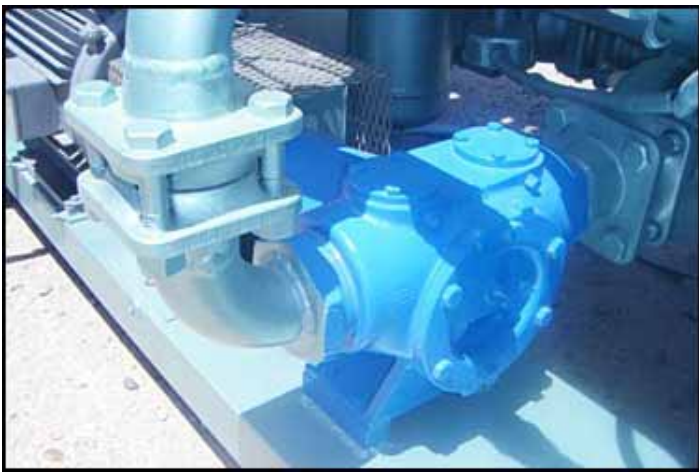
FES 575 / Mycom 250L Screw Compressor Package - 700 HP. Model: 575 / 250L. S/N: 2512853. Capacity: 570 TR. High stage compressor. Refrigerant: R-717. Leak test pressure: 313 psig. Hydrostatic test pressure: 470 psig. General Electric motor, 700 hp, 3575 rpm, 2400/4160 V, 154/89 amps, 60 Hz, 3 phase. Vi setting: 3.6. Displacement: 1,670 cfm. E.L. Nickell oil separator, S/N: 21904, Nat'l Bd: 19933, MAWP: 250 psi @ 650 °F, MDMT: -20 °F. Viking rotary pump, Model: AL195, S/N: 0996754. Lincoln motor, 5 hp, 1175 rpm, 230/460 V, 26/13 amps, 60 Hz, 3 phase. FES Micro II control panel, Model: Retrofit, S/N: 91-0199-1001, FES Contract No: 91-0199-1001-09, power supply: 120 V. Overall dimensions: 13 ft. L x 5 ft. 3 in. W x 8 ft. 2 in. H. (SR250) (ACN950).



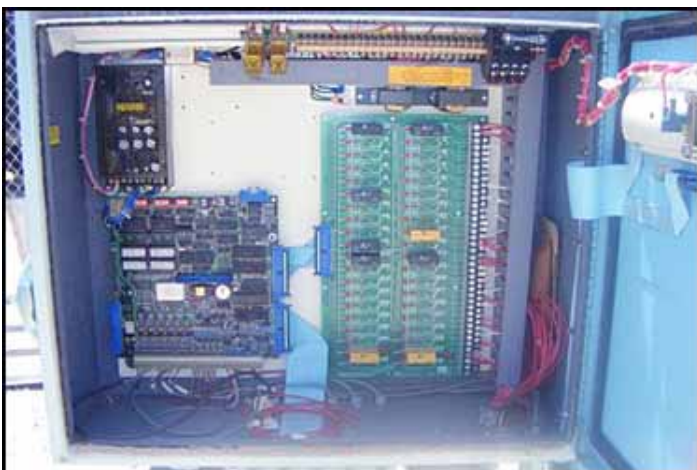
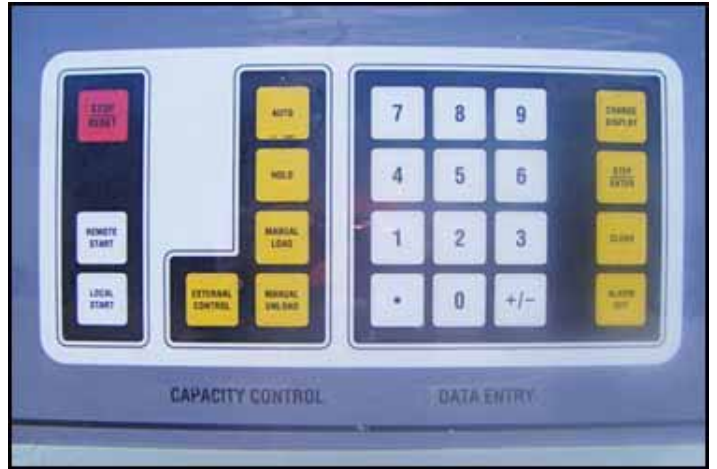




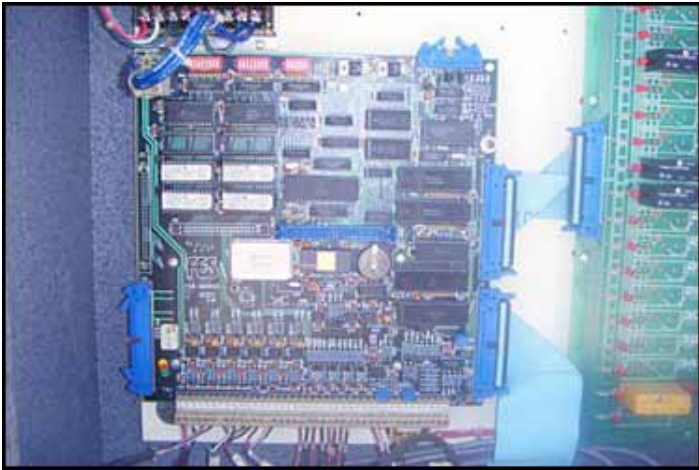
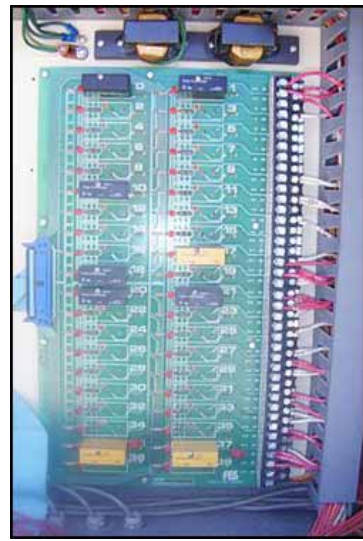




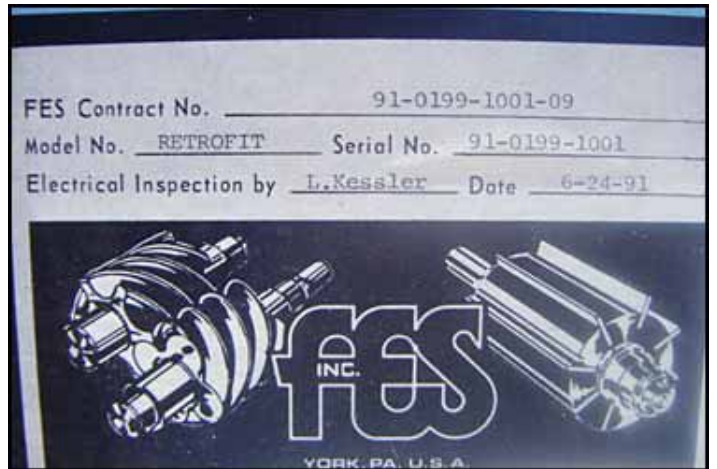








**Control Panel FLA 25a.**  
**120V - 1Ph - 60Hz**  
 FES INC. YORK, PA



FES Contract No. 91-0199-1001-09  
 Model No. RETROFIT Serial No. 91-0199-1001  
 Electrical Inspection by L.Kessler Date 6-24-91



MODEL B75  
 SER. NO. 2312853  
 TEST PRESSURE - PSIG  
 LEAK 3.13 HYD. ATO  
 REFRIGERANT R



**NAT'L. BD.**  
10032  
50 PSI MAX. W.P.  
850 DEG. F. MAX. TEMP.  
20 DEG. F. MIN. TEMP.

