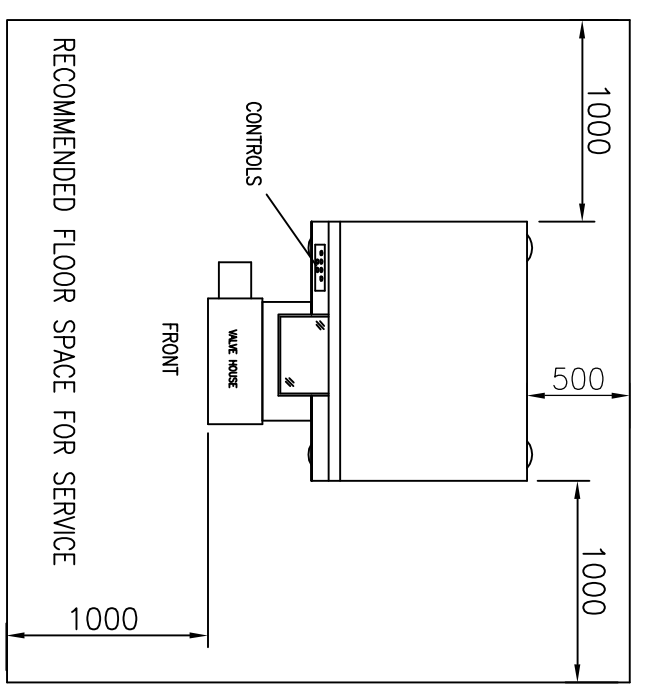
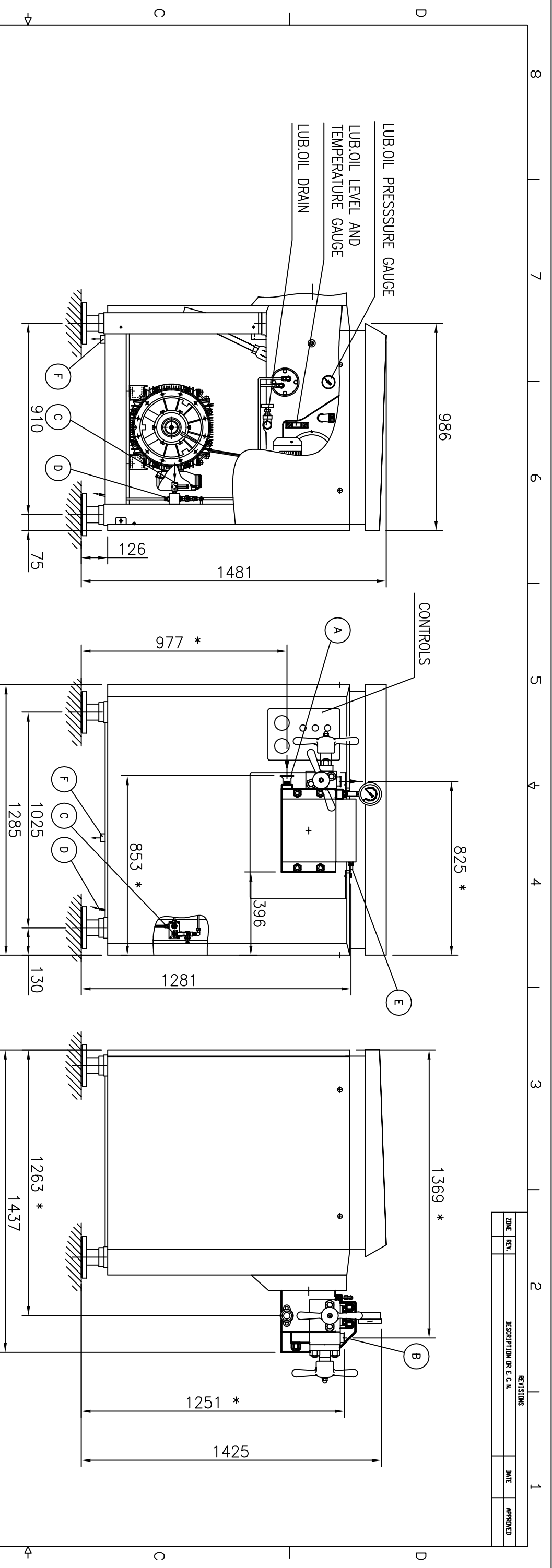


REVISIONS			
ZONE	REV	DESCRIPTION (R, E, C, N)	DATE



LUBE OIL PUMP MOTOR SPECIFICATIONS:  
 1/2 Hp, 3 ph, 60 Hz, 460 v, 1720 RPM, 1.17 amps.

CONNECTIONS		
ITEM	SIZE	DESCRIPTION
A	2" TRI-CLAMP INLET	PRODUCT INLET
B	1-1/2" TRI-CLAMP OUTLET	PRODUCT OUTLET
C	3/8" NPT FEMALE	COOLING WATER INLET
D	3/8" NPT FEMALE	COOLING WATER OUTLET
E	3/8" TUBE END	PLUNGER WATER INLET
F	HOSE-TYCON TUBE (37 mm)	PLUNGER WELL DRAIN LINE

NOTES:  
 1. ALL DIMENSIONS ARE NOMINAL AND MAY VARY ±.7MM.  
 2. REFER TO APPENDIX "B" IN YOUR MANUAL FOR MACHINE SPECIFIC B.O.M.  
 3. THIS DRAWING IS TO BE USED FOR REFERENCE ONLY AND IS NOT MACHINE SPECIFIC.  
 4. DIMENSIONS MARKED WITH "\*" MAY VARY DEPENDING UPON ACTUAL CYLINDER, VALVE AND CONNECTION DESIGNS.

MACHINE WEIGHT LESS MOTOR APPROX: 1600 kg. [3530 LBS.]

<p>APV Homogenizer Division          Lake Mills, Wisconsin</p>	<p>APV 15/24 TWO STAGE          MANUAL VALVE          RECOMMENDED FLOOR SPACE</p>
<p>DESIGNED BY: D. L. H.          DRAWN BY: B. JOHNSON          CHECKED BY: J. G. L.</p>	<p>DATE: 07/15/03          SCALE: N/A          SHEET NO: 1          SHEET 1 OF 1</p>

# Gaulin 15 / Rannie 15: Homogenizer and Reciprocating Pump

## Introduction

The Gaulin 15 / Rannie 15 homogenizer, a positive-displacement triplex, reciprocating plunger pump, is fitted with an application-specific homogenizing valve assembly: single-stage with manual actuation. As a high-pressure pump, this unit can be fitted with a relief valve or bypass flow control valve.

The Gaulin 15 / Rannie 15 incorporates a durable slow-speed power end that reduces vibration and noise. Easy access to the lubrication oil and other auxiliary systems simplifies maintenance saving time and money. Fluid end options include a mono-block design (Gaulin) (ball and poppet style) or a three-piece valve housing (Rannie). Design features of both the Gaulin and Rannie simplify routine maintenance. Materials for plungers, packings, pump valves, valve seats and seals are custom-selected for your application. APV engineers will work with you to optimize the configuration for your specific application.

## Standard Options

- Two-stage manual
- Single-stage hydraulic valve actuation (HVA)
- Two-stage hydraulic valve actuation (HVA)
- Single-stage automatic hydraulic system (AHS)
- Two-stage automatic hydraulic system (AHS)
- Aseptic cylinder design
- Electronic pressure transmitter
- Inlet pressure gauge
- Tungsten carbide homogenizing valve
- Square plunger seals and ceramic plungers (Rannie/Three-Piece Valve Housing only)
- Motor starter

## Special Options

- Acid-proof cylinder
- Ceramic plungers with U- or V-rings
- Controls
  - Plunger lubrication package
  - Flow control switch
  - Stainless steel control cabinet
  - Thermostat/oil temperature
- Explosion-proof design
- Electropolished wettables
- External cooling fan /main motor
- High-temperature design
- Flow switch – power end cooling
- Thermostat/oil temperature

## Gaulin/Mono-Block Design

Type	U.S.	
	MAX. CAPACITY/ GPH	MAX. PRESSURE PSI
<b>POPPET TYPE VALVES</b>		
2.5	790	2500
3.0	610	3000
3.6	500	3600
4.3	450	4300
5.8	290	5800
<b>BALL TYPE VALVES</b>		
2.5	550	2500
3.0	420	3000
3.6	340	3600
4.3	300	4300
5.8	210	5800
8.7	120	8700

## Rannie/Three-Part Valve Housing Ball Valves

Type	U.S.	
	MAX. CAPACITY/ GPH	MAX. PRESSURE PSI
42.56	872	2175
35.56	607	2900
32.56	500	3600
30.56	435	4300
25.56	295	5800
20.56	177	8700
18.56	106	11600
16.56	79	14500
14.56	42	17400
12.56	26	21750

## Dimensions (single stage)

Length (in.)	Width (in.)	Height (in.)	Dimensions Packed in a Crate LxWxH (in.)	Cubic Measure m <sup>3</sup>
51.7	37.2	57.9	60 x 52.4 x 79.2	3.9

Gross Weight in a Crate, including Motor: 2860 lb.

## APV

Homogenizers  
100 South C.P. Avenue  
Lake Mills, WI 53551  
T: (920) 648-8311  
F: (920) 648-1441  
E: apvproducts.us@invensys.com  
W: apv.invensys.com

## APV

Homogenisers  
Roholmsvej 8  
DK-2620 Albertslund, Denmark  
T: +45 70 278 999  
F: +45 70 278 998  
E: homogenisers@invensys.com  
W: apv.invensys.com

