

## General Machinery Corporation Hydraflaker Slicer

Mfg: Genmac

Model: FS-10-C

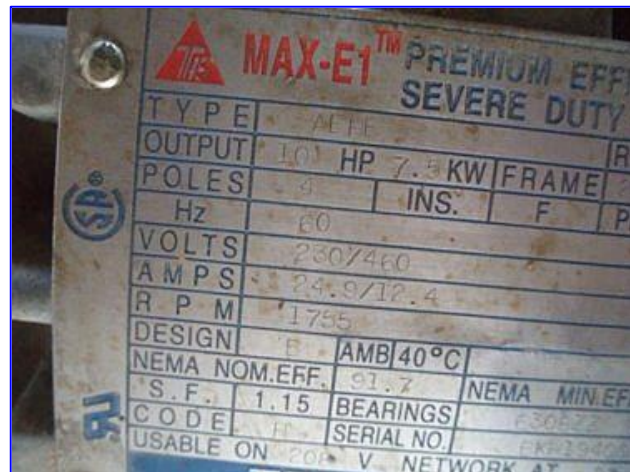
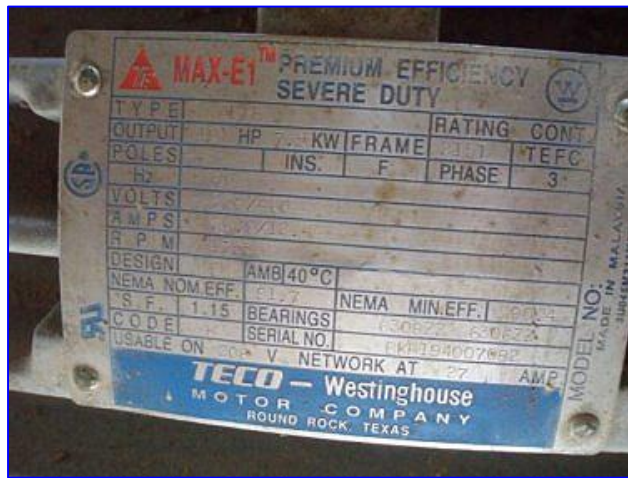
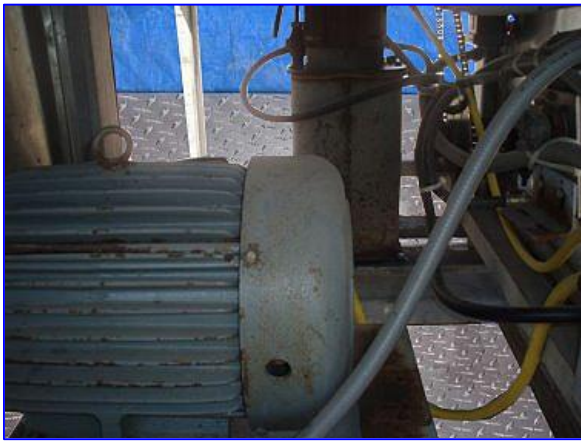
Stock No. EELD371.4a

Serial No. 499

General Machinery Corporation Hydraflaker Slicer. Model: FS-10-C. S/N: 499. Rotating cutting drum dimensions: 12 in. dia. x 29 in. L. Cutter dimensions: 4 in. L x 1-1/2 in. W. Maximum aperture/clearance: 33 in. L x 6 in. H. Teco-Westinghouse Motor, 7-1/2 hp, 1755 rpm, 230/460 V, 24.9/12.4 amps, 60 Hz, 3 phase. Baldor Industrial Hydraulic Motor, 1-1/2 hp, 1725 rpm, 208-230/460 V, 5.3-5/2.5 amps, 60 Hz, 3 phase. Inlets: (1) 33 in. L x 6 in. H. (infeed). Outlet: (1) 29 in. L x 8 in. W. (product discharge). Overall dimensions: 7 ft. L x 3 ft. 9 in. W x 6 ft. H.







CM3554  
35A12W206  
566 F395  
1-1/2  
208-230/460

**MAX-E1™ PREMIUM EFFICIENCY SEVERE DUTY**

TYPE	NEMA		RATING	CONT.
OUTPUT	HP	KW	FRAME	TEFC
POLES	INS.	F	PHASE	3
Hz				
VOLTS				
AMPS				
R P M				
DESIGN	AMB 40°C			
NEMA NOM.EFF.	91.7	NEMA MIN.EFF.	90.4	
S.F.	1.15	BEARINGS	F30623	
C.O.D.E.	SERIAL NO.		FKH194007692	
USABLE ON	208 V NETWORK AT 27 AMP			

**TECO - Westinghouse**  
MOTOR COMPANY  
ROUND ROCK, TEXAS

CM3554  
35A12W206  
566 F395  
1-1/2  
208-230/460  
1725  
90  
1.15  
F30623

**MAX-E1™ PREMIUM EFFICIENCY SEVERE DUTY**

TYPE	NEMA		RATING	CONT.
OUTPUT	10 HP	7.5 KW	FRAME	TEFC
POLES	4	INS.	F	PH
Hz	60			
VOLTS	230/460			
AMPS	24.9/12.4			
R P M	1725			
DESIGN	B AMB 40°C			
NEMA NOM.EFF.	91.7	NEMA MIN.EFF.	90.4	
S.F.	1.15	BEARINGS	F30623	
C.O.D.E.	SERIAL NO.		FKH194007692	
USABLE ON	208 V NETWORK AT 27 AMP			

**TECO - Westinghouse**  
MOTOR COMPANY  
ROUND ROCK, TEXAS