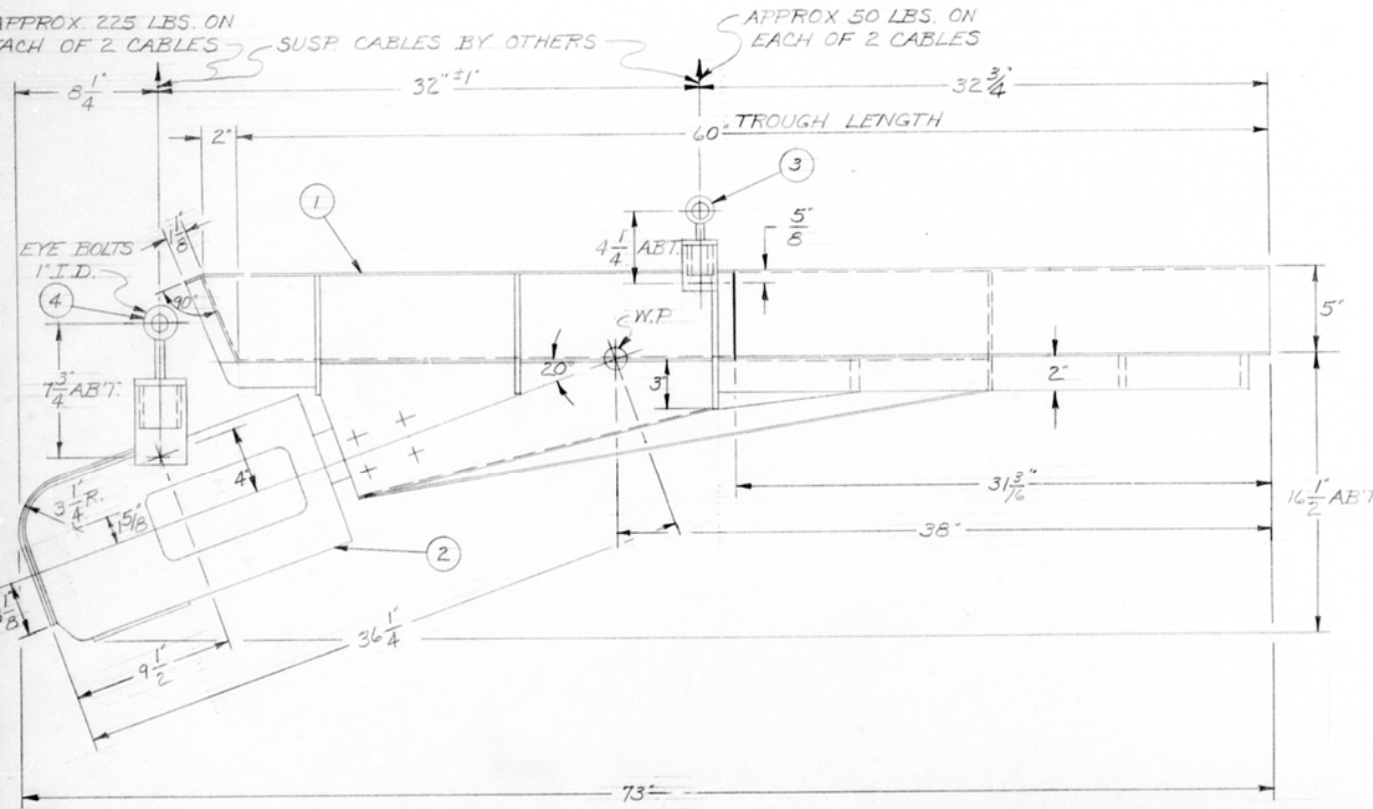
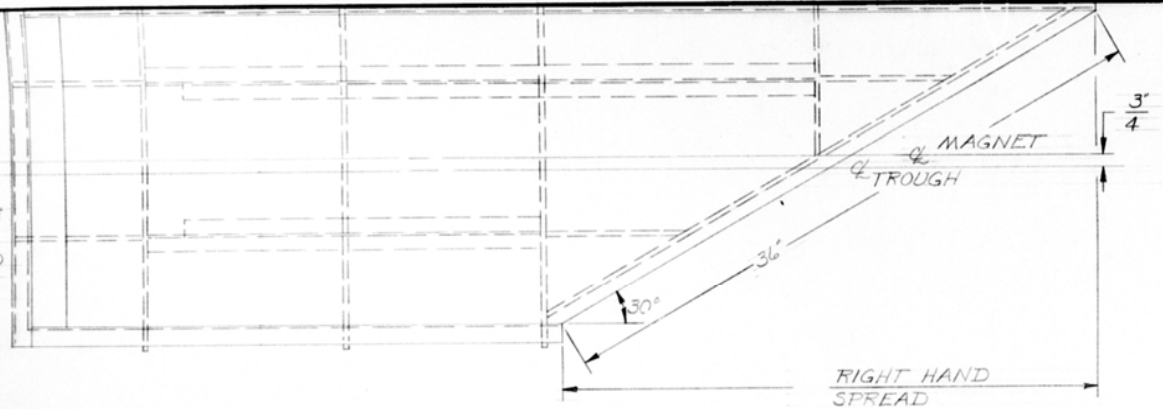


C-16374

NOTE: MAGNET & SUSP. HANGER ASS'Y OMITTED IN PLAN VIEW



FEEDER MUST NOT CONTACT ANY ADJACENT STRUCTURE BUT MUST BE FREE TO VIBRATE. 1 INCH MINIMUM CLEARANCE MUST BE MAINTAINED ALL AROUND.

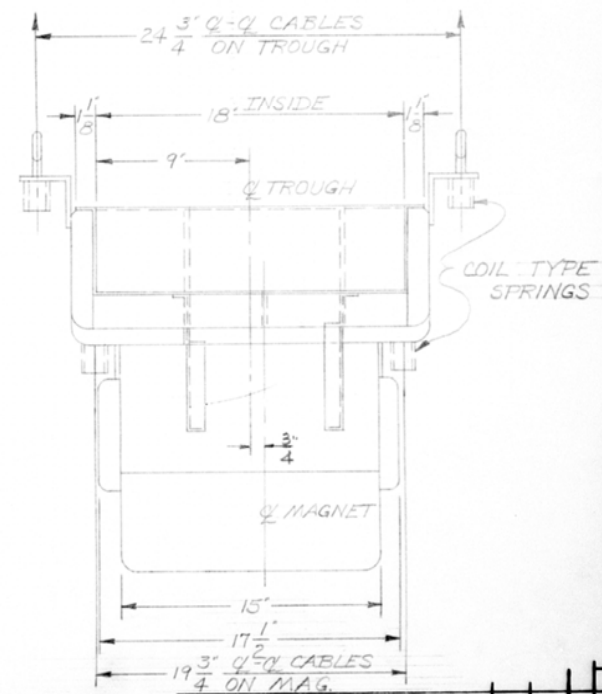
LONGITUDINAL DIMENSIONS LOCATING SUPPORTING CABLES ARE CORRECT ONLY WHEN FEEDER IS INSTALLED HORIZONTALLY AS SHOWN.

SLOPES CAN BE OBTAINED BY ADJUSTING LENGTH OF SUSPENSION CABLES.

FOR 1/2" W-25104 FEEDER WILL BE SUPPLIED WITH SEALED MAGNET.

PARTS LIST

ITEM	PART NO.	DESCRIPTION	WT.	QTY.
1	C-163885	TROUGH		1
2	D-129410-A2	FH-22-A DRIVE ASS'Y		1
3	B-95153	SUSP HANGER ASS'Y (FRONT)		2
4	B-34468	" " " (REAR)		2
5				
6				



REV.	ZONE	DESCRIPTION	BY	DATE

REVISIONS

No drawing is the property of FMC Div of FMC Corporation and transmitted in confidence and the reproduction, use or disclosure, in whole or in part, of the design or details contained hereby is prohibited without the written permission of FMC Div. of FMC Corporation.

FMC FMC Corporation
Material Handling Equipment Division
Homestead, Pennsylvania 15120

DRAWN	DATE	NAME	TITLE
	9-27-76	R.J. ORR	OUTLINE FH-22-A WITH
CHECKED	DATE	NAME	18"W. X 36" LG. TROUGH WITH
	9-28-76	L.J.	RIGHT HAND SPREAD
APPROVED			
		E.E.T.	
TOLERANCE, UNLESS OTHERWISE SPECIFIED	SCALE		DRAWING NUMBER
DECIMAL	3" = 1"		C-163743
FRACTIONAL	16		

F.O. N-98904