

## Western States Lab Basket Centrifuge

Mfg: Western States

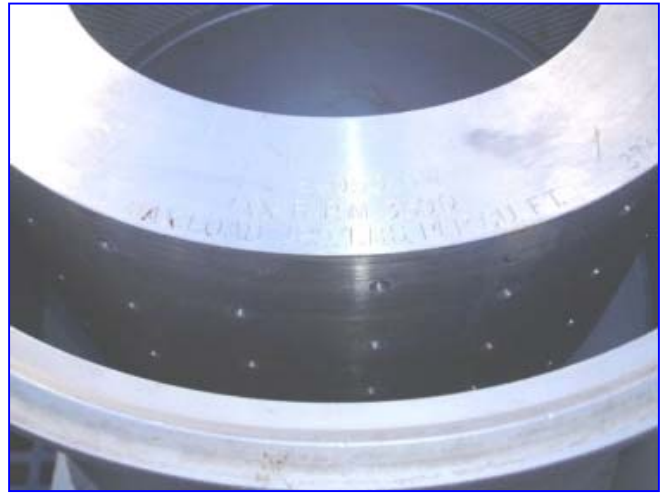
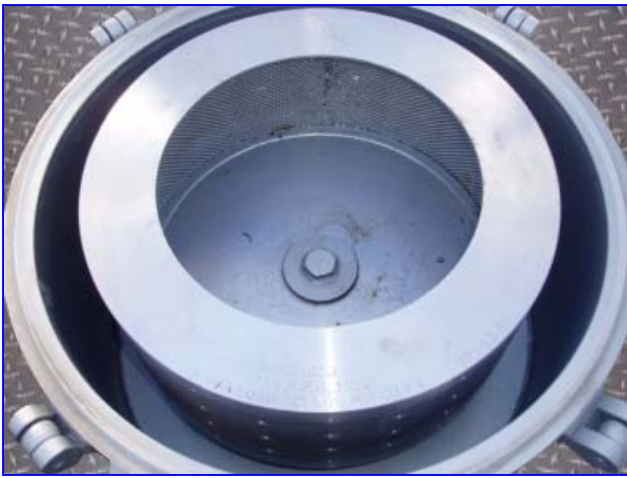
Model:

Stock No. END81001.

Serial No. 430

Western States Lab Basket Centrifuge. S/N 430. 25-Quart Bowl. Bowl dimensions: 10-1/2 in. dia. x 17-1/2 in. H. Maximum rpm 3,600, Maximum load: 125 lb/ft. Contains an inner square mesh screen. Bowl has (84) evenly spaced 3/8 in. dia. perforations. Overall dimensions: 43 in. L x 41 in. W x 41 in. H. Baldor motor, 3 hp, 1,725 rpm, 230/460 V, 8.6/4.3 amps, 60 hz, 3 phase. Power supply: Allen Bradley. Cat No. 609-AEW. Max Hp ratings: 200/230 V, 3 hp, 460 V 8.6/4.3 amps, 60 hz, 3 phase. 460/575 V, 5 hp, Inlet: (1) 1 in., (1) 1-1/2 in. (1) Pneumatic inlet. Outlet: (1) 1/4 in.





# Laboratory Centrifuge



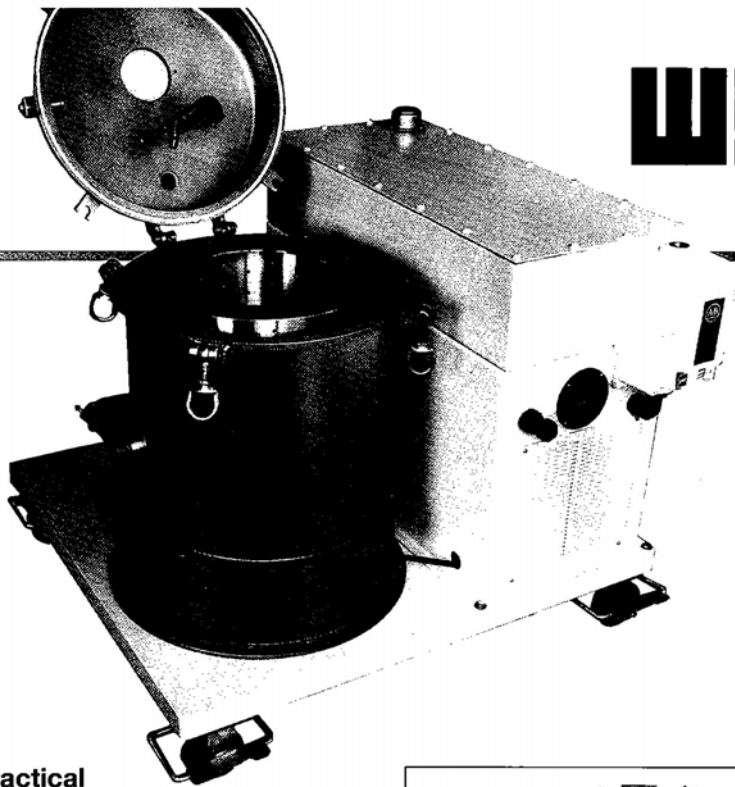
## Compact portable centrifuge with outstanding capabilities

### Versatile Applications

- ⊗ Ideal for laboratory use or for small capacity pilot plant production because of its size and portability.
- ⊗ Studying "G" effects, testing methodology and analyzing processes are just a few of the possibilities with this small-batch centrifuge.
- ⊗ Accurate scale-up to within 1% of large commercial machines.
- ⊗ Will function reliably with the consistency of full-size commercial equipment for positive evaluation and predictable results.

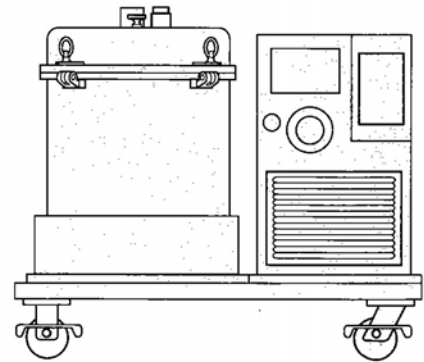
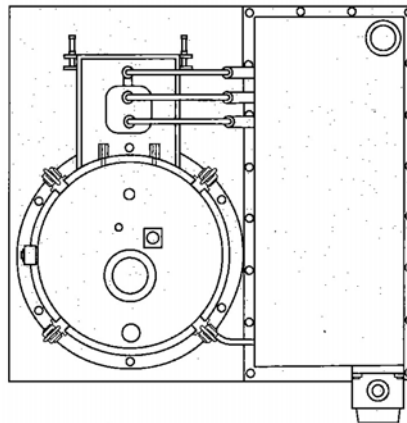
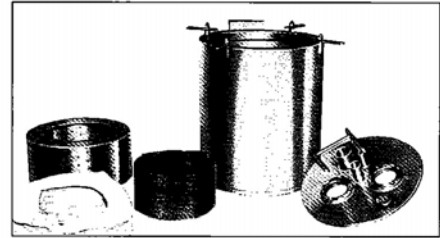
### Operator Friendly

- ⊗ Portable unit comes complete and ready to operate. Light-weight design makes it easy to move on swivel casters.
- ⊗ Reduced vibration with three-point elastomer isolation system. Basket is dynamically balanced.
- ⊗ Infinitely variable speed adjustment.
- ⊗ Monitor the correct speed needed for any product or process with integral tachometer.
- ⊗ Standard hydraulic drive provides stepless acceleration and deceleration.



### Practical Construction

Easy to dismantle and clean for fast changeovers. Corrosion resistant stainless steel construction. Minimum maintenance required. Perforate or imperforate bowl and variety of filter media available.



### Volumetric capacity

Western States Model Number	Screen Area Ft. <sup>2</sup> m <sup>2</sup>	Basket Size inch mm x inch mm	Cake Thk.		inch mm		inch mm		inch mm		inch mm	
			inch	mm	inch	mm	inch	mm	inch	mm	inch	mm
STM 1000-146	1.83 .170	14.0 356 x 6.0 152	Ft. <sup>3</sup> m <sup>3</sup>		Ft. <sup>3</sup> m <sup>3</sup>		Ft. <sup>3</sup> m <sup>3</sup>		Ft. <sup>3</sup> m <sup>3</sup>		Ft. <sup>3</sup> m <sup>3</sup>	
			.07 .002	.14 .004	.20 .006	.26 .007	.31 .009	.36 .010				

### Specifications and dimensions

Western States Model Number	Max. Speed RPM	Centrifugal G Force	Width		Length		Height		Weight		Motor		Power Requirements
			inch	mm	inch	mm	inch	mm	lbs	kg	HP	kW	
STM 1000-146	3550	2500	36	914	40	1016	36	914	550	249	3	2.2	230/460v, 3ph, 60hz

**The Western States Machine Company** • 1798 Fairgrove Avenue, P.O. Box 327, Hamilton, Ohio 45012  
 Telephone (513) 863-4758 • Telex 212057 • Cable Wesmaco • FAX (513) 863-3846 • Representatives in Principal Cities

FILTER BAGS FOR 12" x 5" x 2" AND  
14" x 6" x 3" LAB UNITS

<u>DESCRIPTION</u>	<u>PORE SIZE MICRON</u>	<u>POROSITY CFM</u>
* Polypropylene #9000C	60	35
Polypropylene #9001	120 x 70	320
* Polypropylene #SP-338-PP	30	30
Polypropylene #9008	2.3	1.4
Polypropylene #9010	11	5.5
Polypropylene #9011	17	6
Polypropylene #9016	1	.5
Polypropylene #9121	618	900
* Polypropylene #9162	6-10	6
Polypropylene #9288	8-9	9
Polypropylene 80 mesh filter area with 9162 top and bottom	177	-
Polypropylene 60 mesh filter area with 9162 top and bottom	250	-
Polypropylene 50 mesh filter area with 9162 top and bottom	297	-
Teflon	3	3

NOTE: WHEN ORDERING PLEASE SPECIFY BASKET SIZE

THE WESTERN STATES MACHINE COMPANY

February 21, 1983      Revised April 10, 1985

NOTE: Those No's. marked with an asterisk (\*) represent Filter Bags that are normally stocked by W.S.M.Co. for immediate delivery. All others, please allow three (3) weeks.

