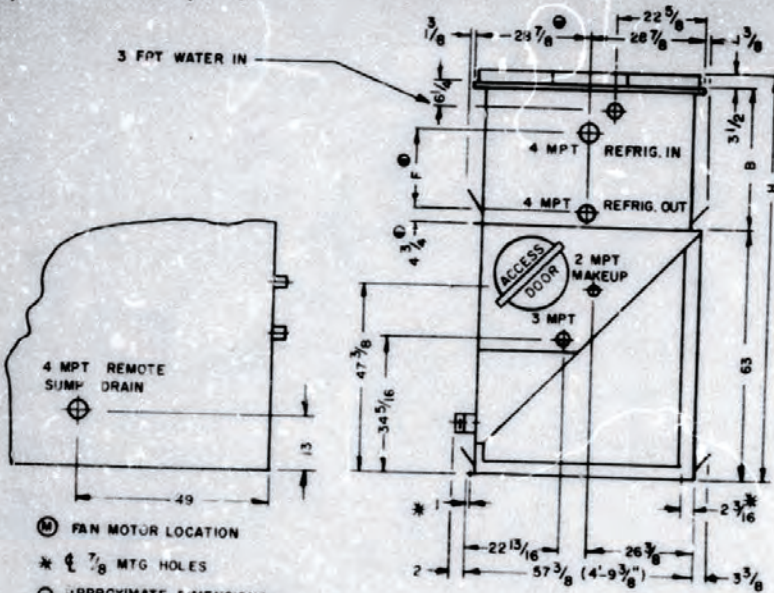
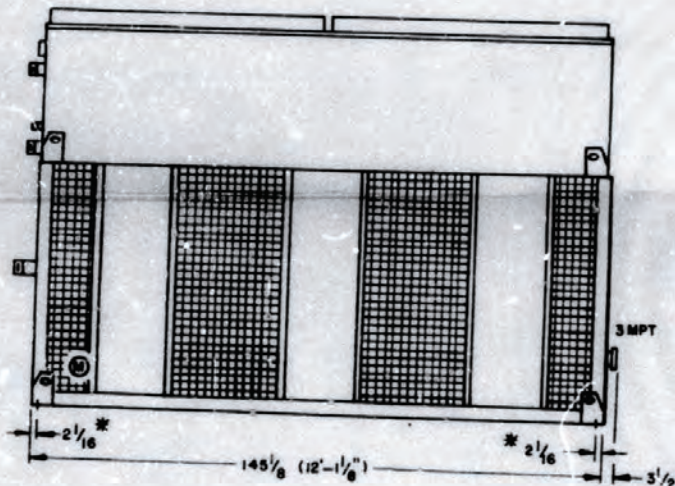


SYM	REVISIONS	DATE
-----	-----------	------



- Ⓜ FAN MOTOR LOCATION
- * ⌀ 7/8 MTG HOLES
- ⊙ APPROXIMATE DIMENSIONS - DO NOT USE FOR PRE-FABRICATION OF CONNECTING PIPING.



Unit Size	Approx. Shipping Weight	Approx. Operating Weight	F	B	H
VLC130A	1100	10700	41 1/4	66 3/8	104 1/2
VLC180A	11100	11600	52 3/8	69 3/4	136 1/2
VLC175A	12100	12000	52 3/8	69 3/4	136 1/2

ALL DIMENSIONS ARE IN INCHES

CERTIFIED FOR Cremery Package Minneapolis, MN

PROJECT Whey to Go Bismarck, ND

DATE 5/6/76 B.A.C. NO. 76-4271P CUSTOMER'S P.O. NO. 22-20284

CAPACITY 97.4 T.R., Ammonia REFRIGERANT AT 95 °F.C.T., 20 °F.S.T., 78 °F.E.W.B.

PUMP MTR. OHM HP, _____ RPM, _____ PHASE, _____ CYCLE, _____ VOLTS,

FAN MTR. (1) 10 HP, 1750 RPM, 3 PHASE, 60 CYCLE, 230/460 VOLTS, Open Dripproof

FAN DRIVES BASED ON 0" ESP REMARKS CFM-28,000 Unit to be furnished less float valve and strainer.

150 GPM @ 0.5 psig required at water inlet.

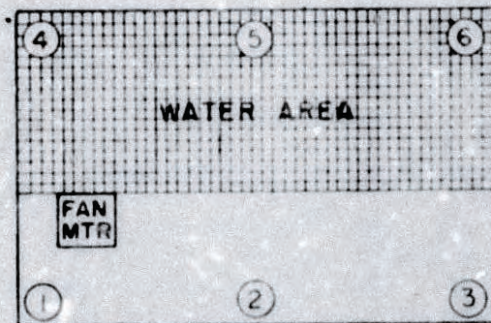
EVAPORATIVE
CONDENSER

BALTIMORE AIRCOIL

BY

psc

UNIT	1	2	3	4	5	6
130A	1789	843	1744	2108	1648	1968
150 A	2164	843	2119	2483	1648	2343
175 A	2409	848	2351	2755	1665	2572



(FAN SIDE)

UNIT	OPR WT
130A	10100
150 A	11600
175 A	12600

REFER TO STEEL SUPPORT
DRAWING FOR LAYOUT OF
STRUCTURAL STEEL

BALTIMORE AIRCOIL CO., INC.

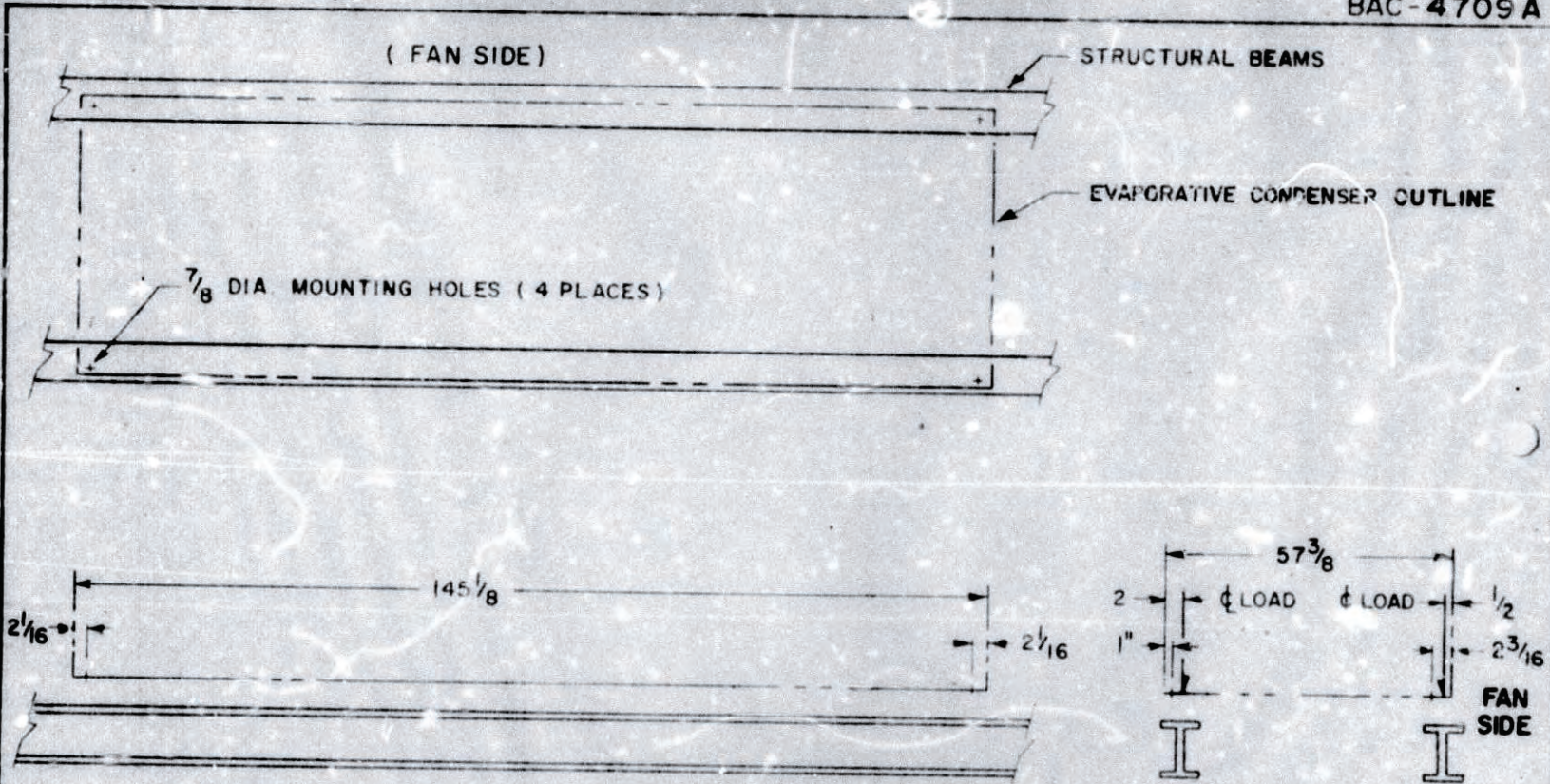
WEIGHT DISTRIBUTION
VLC 130A-175A
REMOTE SUMP

W.H.S.

1-10-75

BAC-4679A

BAC-4709A



NOTES:

1. BEAMS SHOULD BE SIZED IN ACCORDANCE WITH ACCEPTED STRUCTURAL PRACTICES. MAXIMUM DEFLECTION OF BEAM UNDER UNIT TO BE 1/360 OF UNIT LENGTH, NOT TO EXCEED 1/2". THEY CAN BE CALCULATED BY USING 65% OF THE OPERATING WEIGHT AS A UNIFORM LOAD ON EACH BEAM. SUPPORT BEAMS AND ANCHOR BOLTS ARE TO BE FURNISHED AND INSTALLED BY OTHERS. BEAMS MUST BE LOCATED UNDER THE CONTINUOUS LENGTH OF THE PAN FRAME WORK. SEE CERTIFIED PRINT FOR OPERATING WEIGHT.
2. IF VIBRATION ISOLATORS ARE USED, THEY SHOULD BE SUPPLIED WITH RAILS OR CHANNELS TO GIVE CONTINUOUS SUPPORT BETWEEN THE UNIT AND THE SUPPORTING STEEL. CAUTION - BE CERTAIN TO ALLOW FOR THE LENGTH OF THE VIBRATION RAILS WHEN DETERMINING THE LENGTH OF THE SUPPORTING STEEL BEAMS. VIBRATION RAILS ARE SOMETIMES LONGER THAN THE EVAPORATIVE CONDENSER.

BALTIMORE AIRCOIL CO., INC.	
SUGGESTED SUPPORT LOCATION	
W. H. S.	VLC 130A-175A 50
1-10-75	BAC-4709A