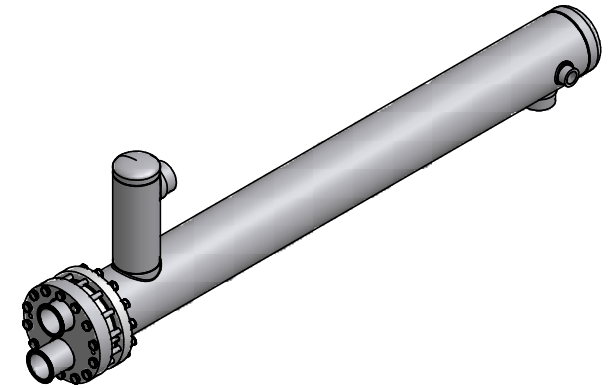
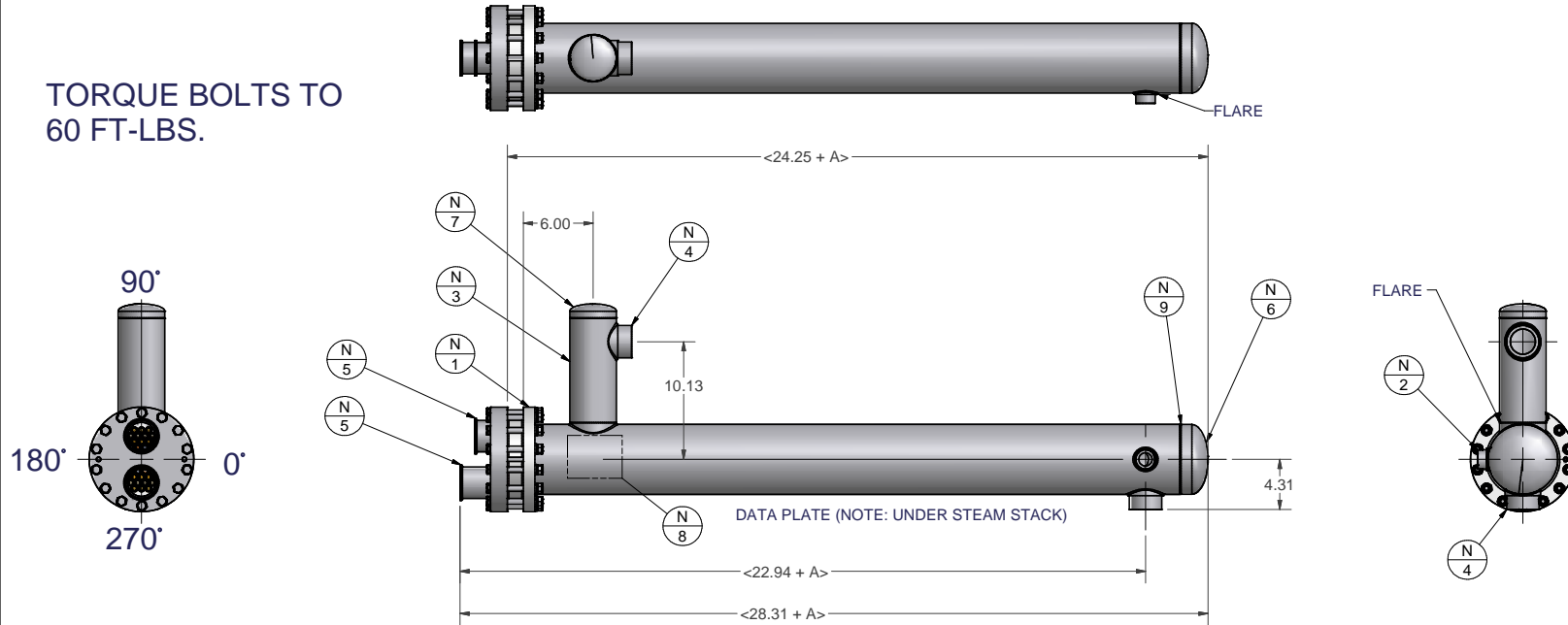


TORQUE BOLTS TO  
60 FT-LBS.



NOTE: ALL PRODUCT CONTACT SURFACES TO BE  
FINISHED AT LEAST AS SMOOTH AS #4.

U-TUBE NOMENCLATURE	MODEL NUMBER	ACTUAL SQ. FT.	DIM A
HX = ITEM	HX-U-2.5-6X24	14.6	0
U = CONFIGURATION	HX-U-2.5-6X36	22.9	12
2.5 = PRODUCT INLET / OUTLET	HX-U-2.5-6X48	31.3	24
6 = DIAMETER (INCHES)	HX-U-2.5-6X60	39.7	36
24 = LENGTH (INCHES)	HX-U-2.5-6X72	48.1	48
	HX-U-2.5-6X96	64.8	72
	HX-U-2.5-6X120	81.6	96
	HX-U-2.5-6X140	95.5	116

**NOZZLE SCHEDULE**

ITEM #	QTY	MATERIAL			SIZE	THICKNESS OR RATING	WELD TYPE	DESCRIPTION
		STUB	SA #	FLANGE				
N1	1	316L S.S.	-	SORF	6"	1	SLIP FLANGE	
N2	1	316L S.S.	-	NPT	1"	150#	HALF COUPLER	
N3	1	316L S.S.	-	TUBE	4"	12 GA	STEAM STACK	
N4	2	316L S.S.	-	NPT	2"	150#	HALF COUPLER	
N5	2	316L S.S.	-	TRI-CLAMP	2.5"	0.164	GC14W-2.5 TRI-CLAMP FERRULE (INLET)	
N6	1	316L S.S.	-	TUBE	6"	11 GA	6" HEMISPHERICAL WELD CAP	
N7	1	316L S.S.	-	TUBE	4"	13 GA	4" HEMISPHERICAL WELD CAP	
N8	1	304L S.S.	-	SHEET	14 GA	0.075	DATA PLATE	
N9	1	316L S.S.	-	SHEET	14 GA	0.075	BACK-UP STRIP	

THIS DRAWING AND ANY PRINT THEREOF IS THE SOLE PROPERTY OF KOSS INDUSTRIAL, INC. GREEN BAY, WISCONSIN AND IS SUBJECT TO RETURN  
UPON REQUEST OF KOSS INDUSTRIAL, INC. THE INFORMATION SHOWN HEREIN IS CONFIDENTIAL AND THE RECIPIENT BY ACCEPTING THIS  
DRAWING, AGREES NOT TO USE ANY INFORMATION CONTAINED HEREIN IN ANY MANNER WHICH WILL BE DETRIMENTAL TO KOSS INDUSTRIAL, INC.

DRAWN	7/25/2002	KOSS INDUSTRIAL, INC. GREEN BAY, WI	
REED			
CHECKED		MATERIAL <b>BASIC INFORMATION / DIMENSIONS</b>	
QA			
MFG		TITLE 6 INCH HEAT EXCHANGER ASSEMBLY	
APPROVED		SIZE C	DWG NO HX-U-2.5-6-CUSTOMER
TOLERANCES UNLESS NOTED		SCALE	REV 0
ANG. FRAC. .X .XX .XXX 125			
±0.5' ±1/32' ±.030 ±.010 ±.005			
		SHEET 1	OF 1