

APV Single Effect Falling Film Plate Evaporator

Mfg: APV

Model: FFPE

Stock No: HDDF148.91a

Serial No: 173

APV Single Effect Falling Film Plate Evaporator. Model: FFPE. S/N: 173. Last running 3-A milk products. System includes APV Falling Film Plate Evaporator, APV Horizontal Separator, and 332 sq. ft. Stainless Steel Condenser. Can be re-configured to customers individual needs. Overall system dimensions: 17 ft. 10 in. L x 14 ft. 11 in. W x 9 ft. 8 in. H.







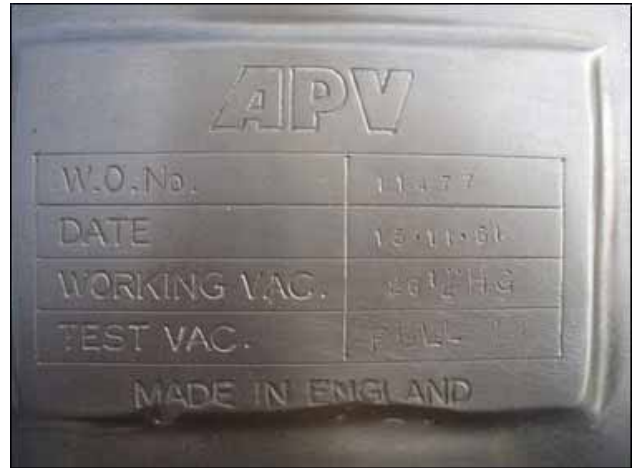
APV Falling Film Plate Evaporator Heat Exchanger. Model FFPE. S/N: 173. Number of plates: 24. Approximate heat transfer area: 432 sq. ft. Inlets (Plate HX): (2) 2 in. S-Line fittings (product), (1) 12 in. pipe (media). Outlets (1) 2 in. S-line, (1) 3 in. S-line, (1) 1.5 in. S-line, (1) 21 in. wide x 9 in. high. Overall Dimensions: 94 in. L x 62 in. W x 116 in. H.





APV Vacuum Separator Unit. Working Vacuum: 26.5" Hg. Test Vacuum: Full. Work Order No.: 11477. Approximately 950 gallon volume. Includes a 4 in. diameter Spray Ball. Inlets/Outlets (separator): (1) 21 in. W x 9 in. H, (1) 4 in. ACME fitting, (1) 1-1/2 in. S-line (CIP-ball), (1) 1 ft. 6 in. diameter man hole.





Stainless Shell and Tube Condensate Units. Inlets/Outlets (evaporators): (2) 2 in. ACME fitting, (1) 2 in. FNPT, (1) 3/4 FNPT, (2) 1 in. ACME fittings, (1) 2-1/2 in. flange port (flange dia. 6 in).

Merrick Mechanical Shell and Tube Condenser. S/N: 225. Nat'l Bd: 130. Number of tubes: 256. Heat transfer surface area: approx. 332 sq. ft. Number of passes: 3. MAWP shell side: 100 psi @ 160°F. MDMT shell side: -20 °F @ 100 psi. MAWP tube side: 75 psi @ 160 °F. MDMT tube side: -20 °F @ 75 psi. Inlets: (1) 5 in. dia. ANSI 150 class flanged port, (1) 4 in. dia. port. Outlets: (1) 5 in. dia. ANSI 150 class flanged port, (1) 18 in. dia. ANSI class 150 flanged port.

Stainless Steel Shell and Tube Pre-Heater. Number of tubes: 40. Heat transfer surface area: approx. 125 sq. ft. Number of passes: 6. Inlets/Outlets: (2) 2 in. ACME fitting, (1) 2 in. FNPT, (1) 3/4 FNPT, (2) 1 in. ACME fittings, (1) 2-1/2 in. flange port (flange dia. 6 in).

Overall dimensions of both shell and tube heat exchangers: 13 ft. L x 44 in. W x 99 in. H.





Sihi Liquid Ring High Performance Vacuum Pump. Model: LPHB 3708. S/N: 3160705. Capacity: 20 in. Hg @ 70 cfm (using dry air). U.S. Motor, 7-1/2 hp, The LPH 3708 liquid ring vacuum pumps are reliable pumps that can be used in a variety of applications; their two stage configuration optimizes performance. The vacuum pumps only moving part is the impeller and shaft assembly. These pumps have no internal metal to metal contacts. Inlets/outlets: (2) 1-1/2 in. dia. ports, each with 5 in. dia. flanges and (4) 1/2 in. dia. thru-holes at center distances of 2-3/4 in. Overall dimensions: 45 in. L x 17 in. W x 20-1/2 in. H.





High Vacuum Performance (Dry Air)

Model Number (Inlet x Outlet Size) measured in inches	Vacuum in Inches Hg.		4	12	20	22.5	25	27.5	28	28.7	28
	Absolute Pressure in Inches Hg.		25.92	17.92	9.92	7.42	4.92	2.42	1.92	1.22	0.9
	Absolute Pressure in mm Hg.		658	455	252	188	125	61.5	48.8	31	28
	Speed	Horsepower	CFM	CFM	CFM	CFM	CFM	CFM	CFM	CFM	CFM
LPH 25003 (1½ x 1¼)	3500	2	13.5	14.5	14.9	14.9	14.5	11.5	11.0	7.0	
LPH 25007 (1½ x 1¼)	3500	3	27.0	30.0	31.0	31.0	31.0	26.5	23.0	12.0	
LPH 3704 (1½ x 1¼)	1150	3	25	25	25	25	25	21	18	-	
	1750	5	37	37	37	42	42	33	29	20	
LPH 3708 (1½ x 1¼)	1150	5	42	42	44	44	44	43	40	-	
	1750	7.5	70	70	70	75	74	62	55	41	
LPH 45312 (1½ x 1¼)	1150	5	54	54	57	61	66	68	64	48	
	1750	7.5	88	90	102	110	112	102	95	70	
LPH 45317 (1½ x 1¼)	1150	5	60	67	74	80	87	82	78	58	
	1750	10	105	105	150	155	150	136	125	90	
LPH 55312 (2 x 2)	1150	7.5	106	106	118	123	124	119	110	82	
	1750	*15	141	141	177	196	199	186	173	130	
LPH 55316 (2 x 2)	1150	10	112	112	135	145	148	130	118	87	
	1750	20	200	200	250	244	240	220	210	140	

