

## Hi Speed Computa-weigh II Checkweigher

Mfg: Hi Speed

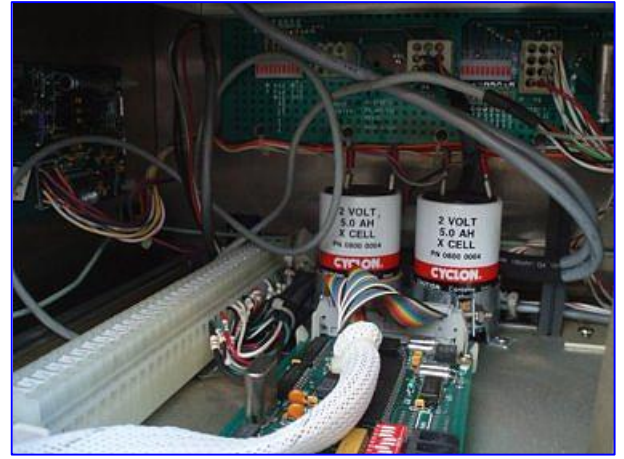
Model: C1

Stock No. HDFD361B.

Serial No. C7-1597

Hi Speed Computa-weigh II Checkweigher. Model: C1. S/N: C7-1597. Power supply: 120 V, 1.5 amps, 60 Hz, single phase. Hi Speed Conveyor. Model: HED-85C-OT. S/N: 8050. Job No. 1286407. Sola Electric Transformer. Cat. No. 63-23-125-4. S/N: 8610 FP. Input: 95-130/175-235/190-260/380-520 V. Output: 120 V. Amps: 3.00/1.70/1.50/.75. 60 Hz. Conveyor dimensions: 7 in. W x 3 ft. 3 in. L. Infeed/exit height: 3 ft. (3) Groschopp Electric Motors, 1/10 hp, 3360 rpm, 220/380 V, .35/.2 amps, 60 Hz, 3 phase. Adjustable operator touchpad control panel. Overall dimensions: 3 ft. 5 in. L x 2 ft. 7 in. x 5 ft. 1 in. H.





HI-SPEED CHECKWEIGHER CO., INC.  
 ITHACA, NY 14850

ENCLOSED INDUSTRIAL CONTROL PANEL

MODEL # 01 SERIAL # 07-1597

THIS EQUIPMENT IS DESIGNED TO THE FOLLOWING ELECTRICAL SPECIFICATIONS:

SUPPLY: 120 VOLTS 1 PHASE  
60 CYCLES F.L.A. 1.5 AMPS

OVER CURRENT PROTECTION PROVIDED AT MACHINE SUPPLY TERMINALS        AMPS

WIRING DIAGRAM 1/2" X 1/2" (10)

LARGEST CONTROLLED MOTOR        AMPS

FOR OTHER INFORMATION, SEE MOTOR NAME PLATE(S) J/N 1286407

**WARNING**

ANY CIRCUIT OR COMPONENT CHANGES TO THIS MACHINE WILL VOID THE WARRANTY UNLESS AUTHORIZED IN WRITING BY HI-SPEED CHECKWEIGHER CO. NO ELECTRICAL SERVICE OTHER THAN THE CONTROL SUPPLY IS TO BE INTRODUCED INTO THE ENCLOSURE(S) OR MACHINE CONDUIT(S). EXCEPTION IS MADE ONLY WHEN HI-SPEED CHECKWEIGHER CO. PROVIDES MOTOR CONTROL CONDUITS AND SWITCHING.



