

**Used Waukesha 45-U2 Positive Displacement Pump**

**Mfg: Waukesha Cherry-Burrell**

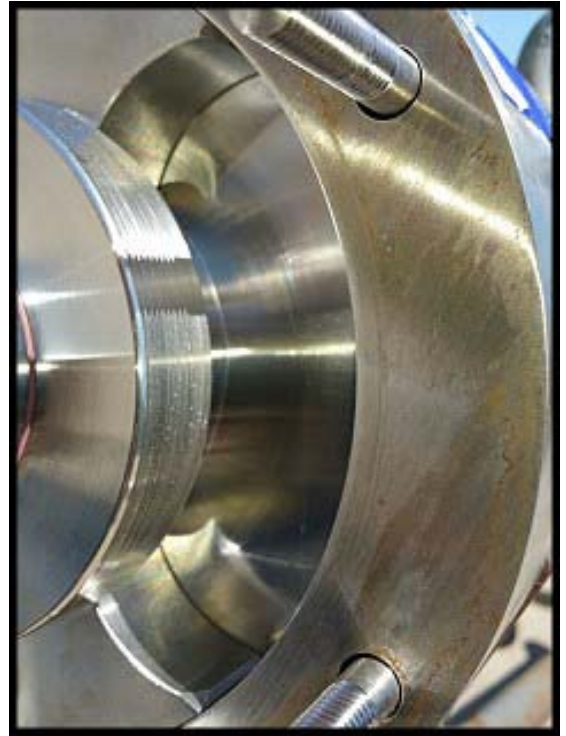
**Model: 045-U2**

**Stock No.: HDUL648.45**

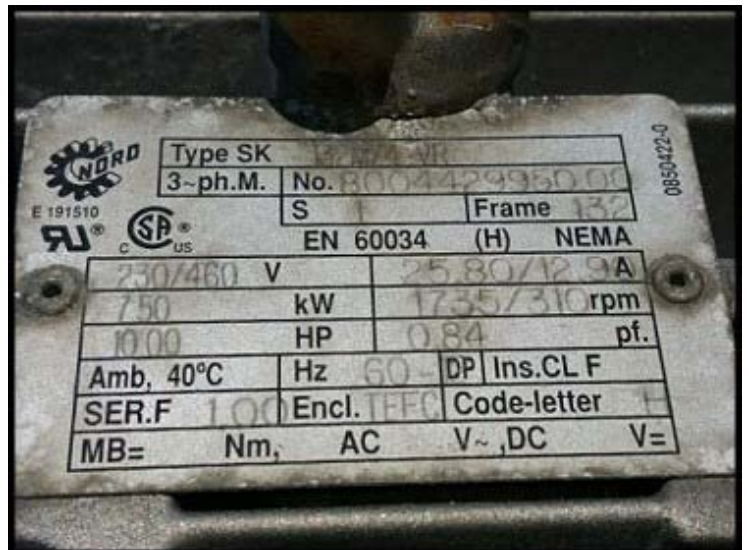
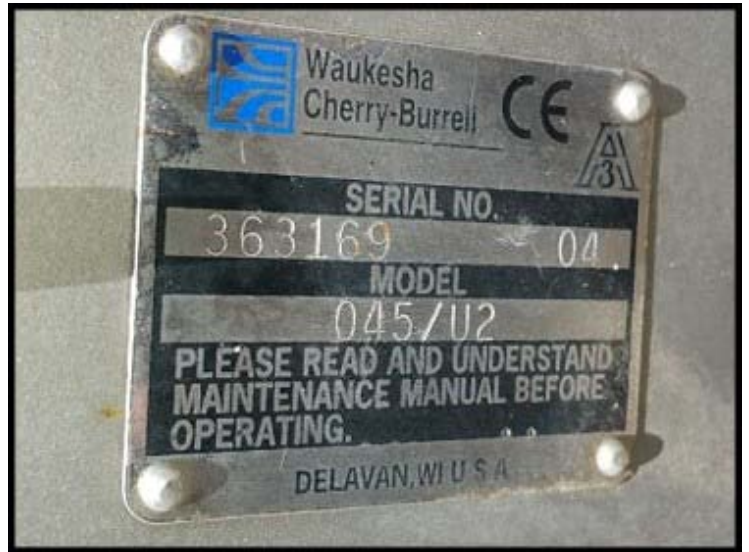
**Serial No.: 363169-04**

Waukesha Cherry-Burrell Universal 2 Series Positive Displacement Pump. Model: 045 / U2. Serial: 363169-04. Displacement per revolution: 0.098 gallons. Nominal capacity to 58 GPM. Maximum pressure: 450 PSI. Nord gear drive: 10 HP, 230/460V, 25.8/12.9 Amps, 1735 / 310 RPM, 60 Hz, 3-phase, TEFC. Gear ratio: 9.80 (177 final RPM, 17.3 GPM). Ports: 2 in. S-line fittings. Overall dimensions: 3 ft. 8 in. L x 1 ft. 6 in. W x 2 ft. H.



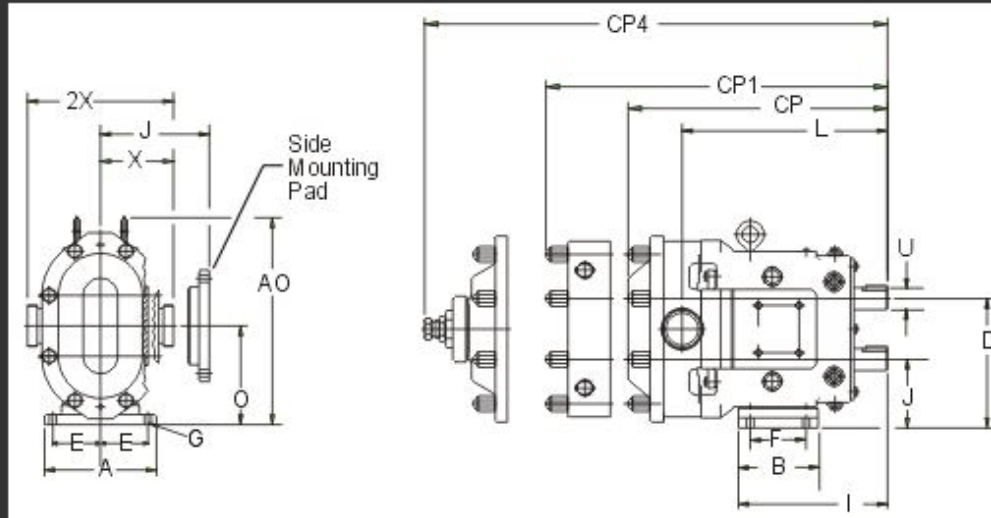






**MODEL 045-U2**

0-600 RPM speed range. 2" (50.8 mm) port sizes available; suitable to 450 PSI (31.0 bar) differential pressure. Temperature range -40°F (-40°C) to 300°F (149°C).



	A	AO	B	CP	CP1	CP4	D	E	F	G	I	J	L	O	U	X	2X
<b>IN</b>	8.25	15.31	5.87	18.59	20.70	22.28	9.56	3.50	4.12	.53	10.99	5.06	14.86	7.31	1.625	5.37	10.75
<b>MM</b>	210	389	149	472	526	566	243	89	105	13	279	129	377	186	41.28	136	273

CP= Standard Cover, CP1= Jacketed Cover, CP4= Manual Vented Cover, Connection sizes for Jacketed Covers are ¾"-14 NPT on Models 006-U11 to 030-U11, 1"-11-½ NPT on Models 042-U11 to 220-U11.

Dimension 'X' and '2X' apply for Bevel Seat, "S"-Clamp, "Q"-Clamp, 15I and 14I fittings (except 320 U11).

NOTE: Dimensions are for guidance purposes only. Contact your WCB Representative if more detailed measurements are needed.

Approximate shipping weight 295 lb. (134.0 kg.).

**Note:** Waukesha Cherry-Burrell (WCB) curves are intended for use as an aid for preliminary selection of pumps by trained and qualified engineers. All selections must be reviewed by authorized WCB personnel prior to placing an order. WCB is not responsible for unauthorized or incorrect selections resulting from the use of these curves.