

Waukesha 55 Positive Displacement Pump

Mfg: Waukesha

Model: 055-DO

Stock No.: HDUL975A.12a

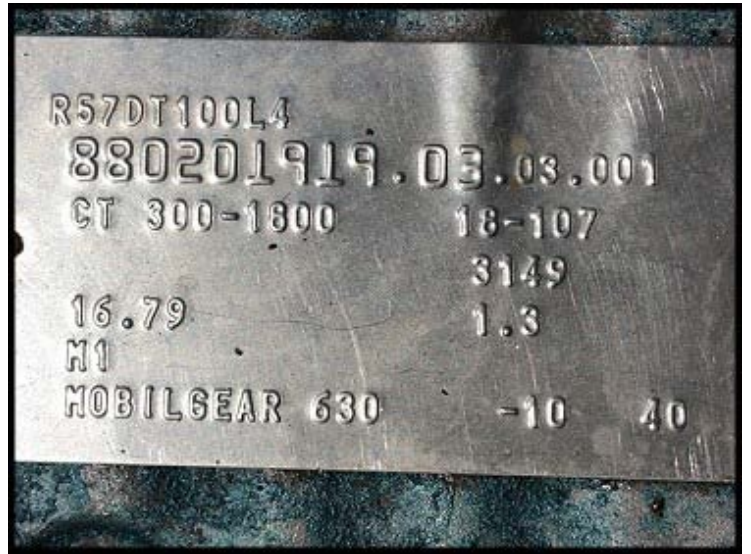
Serial No.: D068804SS

Used Waukesha Rotary Lobe Positive Displacement Pump. Model: 055. Serial: D068804SS. DO Series. Displacement per revolution: 0.15 gallons. Nominal speed to 600 RPM. Pressure to 150 PSI. Nominal capacity to 90 GPM. Nominal temperature range: -40F to 300F. SEW Eurodrive: 5 HP, 1680 RPM, 230/460V, 13.6/6.8 amps, 60 Hz, 3-phase, TEFC, 16.79 gear ratio (100 final RPM). Allen Bradley PowerFlex 70 VFD motor controller (housing damaged). Ports: 3 in. sanitary bevel seat. Overall dimensions: 4 ft. 5 in. L x 2 ft. 1 in. W x 3 ft. 8 in. High.







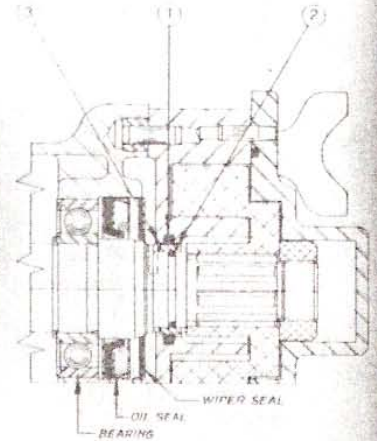
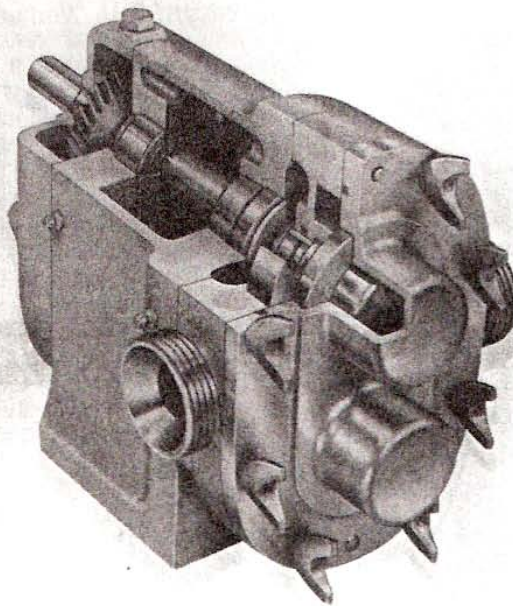


See DO Model info next page.

Sanitary Pumps

D.O. Model

Waukesha's complete line of stainless steel and Waukesha sanitary pumps feature easy cleaning and disassembly without tools. Rotors, body and all parts in contact with the product are designed and manufactured for acceptability by U.S.D.A. and 3A sanitary standards. Because application requirements vary widely, Waukesha offers a variety of seals and rotor combinations to best serve industry needs.



1. Body O-Ring
2. Shaft O-Ring
3. Removable Stainless Steel Sleeve

Metal Rotor/Single O-ring Design

SPECIFICATIONS—

Model	Displacement Per Revolution	Nominal Speed	Pressure	Nominal Capacity to	Typical HP Range	Inlet/Outlet	Nominal Temperature Range
2DO	.0045 gal	to 600 rpm	to 100 psi	2 gpm	¼-1	1"	212°F.
3DO	.0075 gal		to 150 psi	4 gpm	¼-1	1"	-40°F. to 300°F.
10DO	.013 gal			10 gpm	½-1½	1½"	
16DO	.029 gal			17 gpm	½-2	1½"	
25DO	.06 gal			36 gpm	1-5	1½"	
55DO	.15 gal			90 gpm	2-7½	2"	
100DO	.20 gal			120 gpm	2-10	2"	
125DO	.25 gal			150 gpm	3-15	2½"	
200DO	.5 gal			300 gpm	5-25	4"	
300DO	.75 gal			450 gpm	10-50	6"	

CONSTRUCTION FEATURES—

PUMP BODY & ROTORS—
 316 stainless steel with "WAUKESHA 88" Alloy, or #118 Waukesha Metal with #1 Waukesha Metal

TWIN BLADE—standard

SINGLE BLADE—Available on Models 25, 55, 100, 125 & 200

TRI-BLADE—Available on Models 25, 55, 100 & 125

SHAFTS—316 stainless steel

BEARINGS—Ball

SEALS—O-ring (Buna-N, Silicone Ethylene Propylene & Viton-A)

TIMING GEARS—Precision helical

VISCOSITY RANGE—Less than 1 cps to over 250,000 cps