

## Fristam Centrifugal Pump

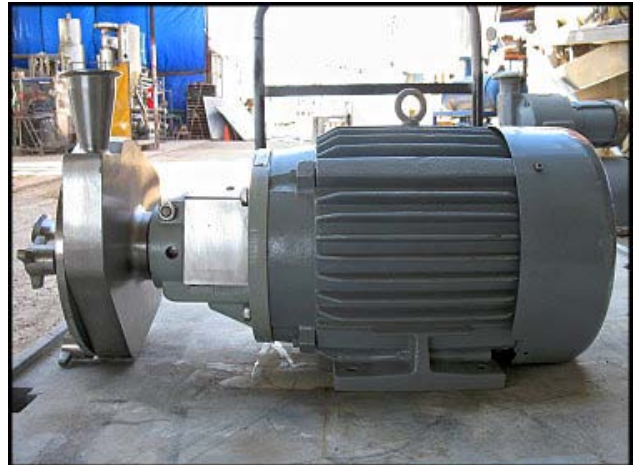
**Mfg: Fristam**

**Model: FPX732-135**

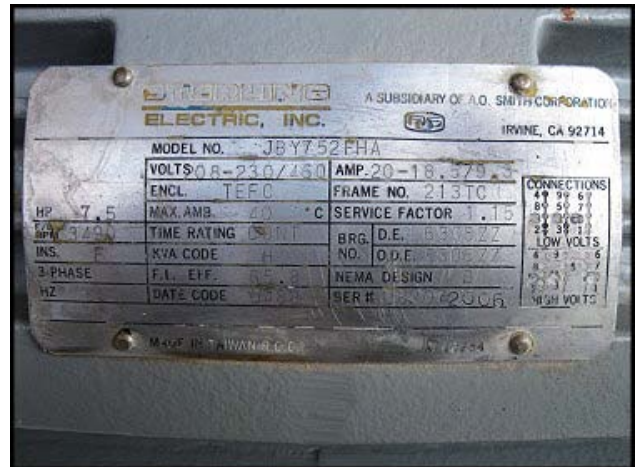
**Stock No: HDVI184B**

**Serial No: FPX732971851**

Fristam Centrifugal Pump. Model: FPX732-135. S/N: FPX732971851. Sterling Electric, Inc. motor: 7.5 Hp, 3490 Rpm, 208-230/460 V, 20-18.5/9.3 A, 60 Hz, 3 Phase. (1) 5-1/2 in. dia. impeller. (1) 2-1/2 in. S-line inlet. (1) 2 in. S-line outlet. Overall dimensions: 2 ft. 1-3/4 in. L x 1 ft. 1-5/8 in. W x 1 ft. 2 in. H.







<b>STARBUCK</b>		A SUBSIDIARY OF A.O. SMITH CORPORATION	
<b>ELECTRIC, INC.</b>		IRVINE, CA 92714	
MODEL NO. JBY752FHA			
VOLTS 08-230/250		AMP. 20-18.379.3	
ENCL. TEFC	FRAME NO. 213TC	CONNECTIONS	
HP 7.5	MAX. AMB. 40 °C	SERVICE FACTOR 1.15	4 5 6 7
MT 349	TIME RATING S1	BRG. D.E. 630522	8 9 10 11
INS. F	KVA CODE H	NO. D.E. 630577	12 13 14
3-PHASE	F.L. EFF. 85.8	NEMA DESIGN B	15 16 17
HZ	DATE CODE 0808	SER # 002006	18 19 20
MADE IN TAIWAN P.R.C.		11/22/04	