

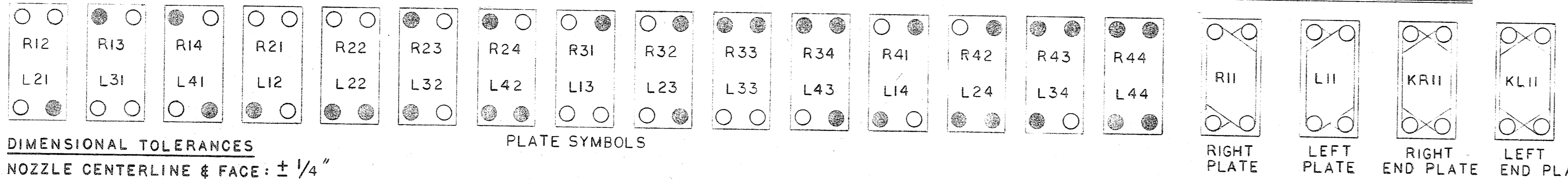
PLATES MUST BE ARRANGED ALTERNATELY LEFT AND RIGHT. FOR CONVENIENCE ON THIS DRAWING, WHERE BLOCKS OF R AND L11 PLATES OCCUR, THE TOTAL NUMBER OF EACH IS GIVEN.

COOLER PASSES
 PRODUCT - 3 OF 11
 GLYCOL - 1 OF 17, 2 OF 16

REGEN PASSES
 RAW PRODUCT - 5 OF 10
 FAST PRODUCT - 5 OF 10

HEATER PASSES
 PRODUCT - 3 OF 8
 HOT WATER - 1 OF 24

ELEVATION OF PLATE ARRANGEMENT



CLEAN AND LUBRICATE THREADS BEFORE OPENING OR CLOSING. YOU MUST USE A LUBRICANT COMPATIBLE WITH STAINLESS STEEL.

ROCOL A.S.P. OR NEVER-SEEZ BLACK MOLY LUBE DO NOT USE COMMON GREASE.

DIMENSIONAL TOLERANCES
 NOZZLE CENTERLINE & FACE: ± 1/4"
 FRAME BALL FEET LOCATIONS: ± 1/4"

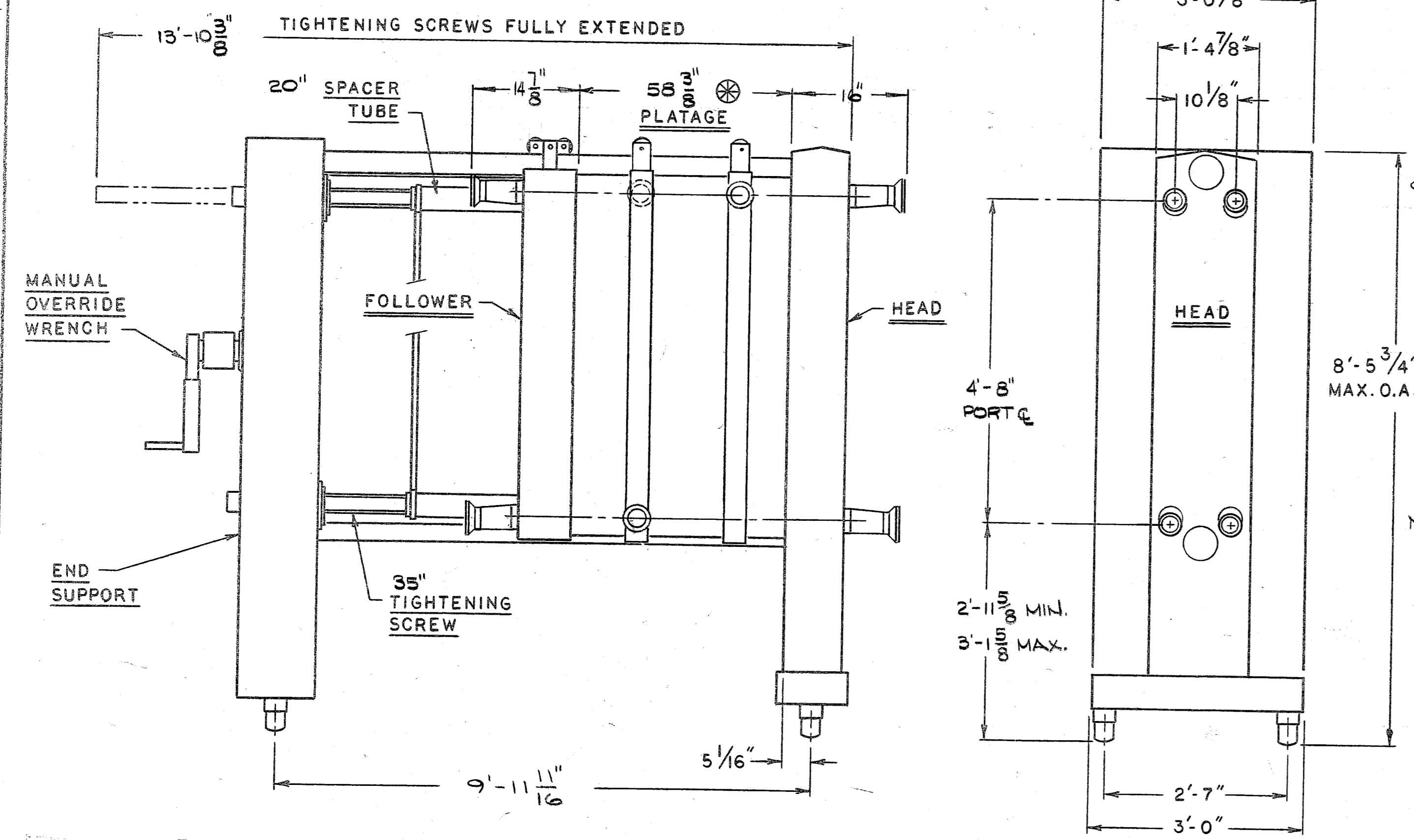
- NOTES:
- ALL PLATES VIEWED FROM GASKET SIDE
 - END PLATES DENOTED BY LETTER "K" PRECEDING SYMBOL
 - THIS MODEL HEAT EXCHANGER IS DESIGNED TO OPERATE WITH METAL TO METAL CONTACT BETWEEN PLATE SURFACES. ALL SUPPORT IS FROM PLATE CROSS OVER POINTS AND NOT FROM GASKET SEAL. THEREFORE THIS MACHINE MUST ALWAYS BE TIGHTENED TO A DEAD HARD CONDITION BEFORE OPERATION. THE PLATAGE DIM. SHOWN IS NOMINAL ONLY. DUE TO PLATE MFG. TOLERANCES PLATAGE CAN VARY ± 0.005" PER PLATE
 - INSTALL PLATES ALTERNATELY LEFT & RIGHT.
 - CUSTOMER'S PIPING TO FOLLOWER OR CONNECTOR GRID NOZZLES MUST ALLOW FOR FREE MOVEMENT WHEN UNIT IS OPENED FOR SERVICE AND PROVIDE FOR VARIATION OF THE TIGHTENED PLATAGE DIMENSION OF ± 1/2" PER 100 PLATES.
 - A PRESSURE RELIEF VALVE MUST BE INSTALLED IN LINES TO PREVENT DAMAGE TO FRAME.

LIQUID	RATE	TEMP. °F	ΔP (PSI)
14% ICE CREAM MIX	3600 GPH	60 → 160	16
		160 → 185	14
		185 → 85	16
		85 → 40	15
HOT WATER	300 GPM	189 → 184	5
GLYCOL	280 GPM	28 → 38	20

LIST OF PLATES 217 R5 3/4 300 316 S.S. W/ PARACRIL GASKETS	
TOTAL "L" PLATES: 109	TOTAL "R" PLATES: 108
94 L11	89 R11
1 L13	5 R12
1 L14	5 R13
4 L21	2 R21
1 L22	2 R21-D
3 L31	3 R31
3 L33	1 R42
1 KL22	1 KR13
1 KL32	D* DENOTES DRAIN

FRAME SIZE: #6 108"
 MAX. OPERATING PRESSURE: 225 PSI.
 ⊗ PLATAGE: 58 3/8 INCHES
 VOL. OF PRODUCT: 113 GALS.
 WT. OF MACHINE DRY: 7790 LBS.
 WT. OF MACHINE FLOODED: 9070 LBS.
 FITTINGS: 316 S.S. CHERRY-BURRELL 'I'-LINE
 FRAME: 3"
 GRID: 2 1/2"
 PRESS. SWITCH: 2"

MODEL CR5
 HEAT EXCHANGER
 WITH HYDRAULIC TAKE-UP
 W.O. 22839



DATE	REVISION
E	
D	
C	
B	4.28.90 GRID NUMBERING CORRECTED
A	3.8.90 ADDED PLATE ARR'GT

APV APV CREPACO, INC.
 395 FILLMORE AVE.
 TONAWANDA, NY 14150

DR. BY: D. KUREK
 CK. BY: NTS
 W.O. 22839
 SCALE: NTS
 DATE: 1-25-90
 SUPERCEDES

JERSEYMAID
 ICE CREAM DEPT.
 LOS ANGELES, CA.

DRAWING NO. 4.22839.0001
 REV. B