

Fristam Sanitary Centrifugal Pump

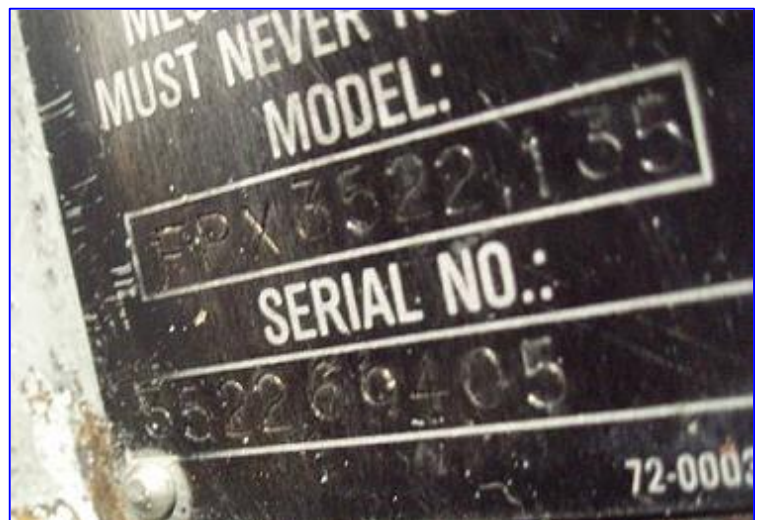
Mfg: Fristam

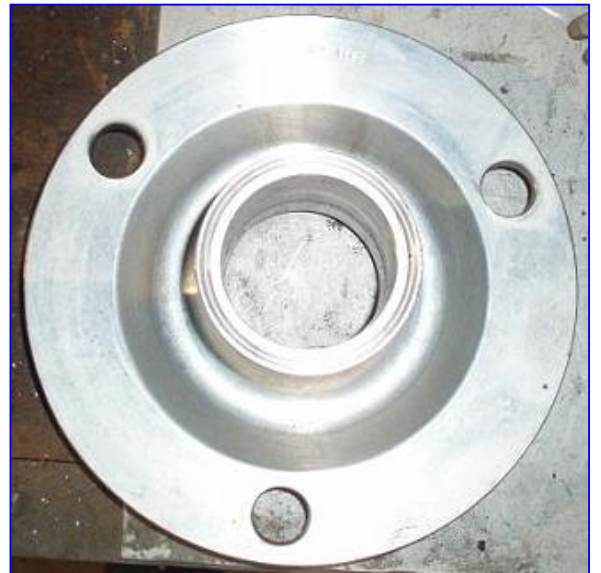
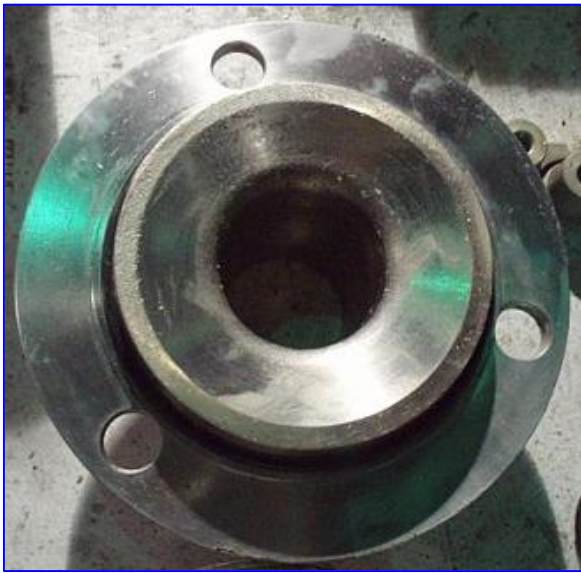
Model: FPX3522135

Stock No. HDYA003.5a

Serial No. 552269405

Fristam Sanitary Centrifugal Pump. Model: FPX3522135. S/N: 552269405. Capacity: 150 gpm. Impeller diameter: 5-1/2 in. Sterling Electric Motor, 7-1/2 hp, 3490 rpm, 208-230/460 V, 20-18.5/9.3 amps, 60 Hz, 3 phase. Inlet: (1) 2-1/2 in. dia. S-line fittings. Outlet: (1) 2 in. dia. S-line fittings. Overall dimensions: 2 ft 2 in. L x 1 ft. 2 in. W x 1 ft. 1/2 in. H.





STERLING
ELECTRIC, INC.

MODEL NO.		AMP.	
VOLTS 08-200/200		FRAME NO.	
ENCL. TEFC		SERVICE FACTOR	
7.5 MAX. AMB. 40 °C		BRG. NO.	D.E.
3490 TIME RATING CONT		O.D.E.	
F KVA CODE H		NEMA DESIGN	
PHASE 3	F.L. EFF. 85.5	SER #	
50 DATE CODE 8788			

MADE IN TAIWAN R.O.C.

STERLING
ELECTRIC, INC.

MODEL NO.		AMP.	
VOLTS 08-200/200		FRAME NO.	
ENCL. TEFC		SERVICE FACTOR	
HP 7.5 MAX. AMB. 40 °C		BRG. NO.	D.E.
F/L RPM 3490 TIME RATING CONT		O.D.E.	
INS. F KVA CODE H		NEMA DESIGN	
3-PHASE F.L. EFF. 85.5		SER #	
HZ 60 DATE CODE 8788			

MADE IN TAIWAN R.O.C.