

**Dunham Busch / Frick Screw Compressor Package - 500 HP**

**Mfg: Frick**

**Model: 106**

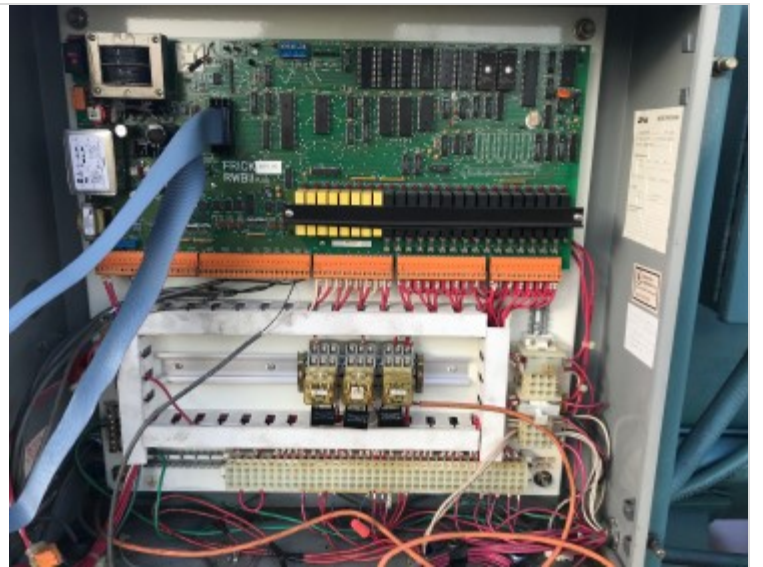
**Stock No.: JSAC06**

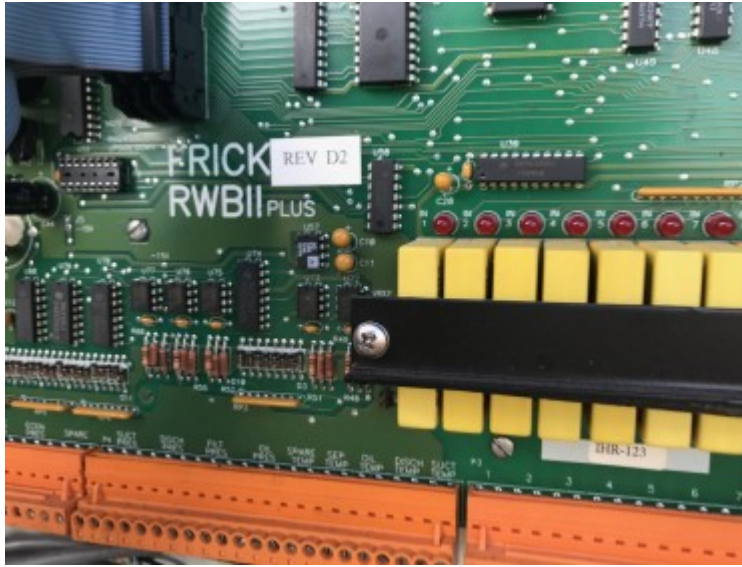
**Serial No.: 25LODLR3x3929**

Dunham Busch-Frick Rotary Screw Compressor Package. Compressor model: 106, serial 25LODLR3x3929, refig. R717, 3.6 Vi. The package was built by Frick in 1981, and features a Dunham-Bush compressor. Toshiba motor 500 HP, 3520 RPM, 460V, 60 Hz, 3-phase, 505USS frame. Overall dimensions: 14 ft. 7 in. L x 6 ft. W x 110 in. H (height can be reduced to 80 inches if the suction strainer is removed).









**Frick** **MICRO PROGRAM**

S.O. C 264777 ITEM 02  
DATE 01-25-94 REFRIGERANT R217  
PROGRAM I.D. RWB-HS

COMPRESSOR MODEL:  
RWB:      RDB:      RKB:      RFX:       
OTHER:     

DUTY: HIGH STAGE      BOOSTER      SWING X

OL PUMP:  
PRE-LUBE       
CYCLING      FULL-TIME X  
NO PUMP     

SPECIAL PROGRAMMING:  
AutoSet

**UL** Underwriters Laboratories