

5. S. S. NEPPLE
4" INDI 4" LONG

3" S. S. SCHEDULE 40 & PIPE
EXCERPT FOR WATER INLET

2" S. S. SCHEDULE 40
PIPE JOCKEY OUTLET

ZONE #1

1 1/2" 40 PIPE

TECS BRACERS

VALVE BODY
(2 REQUIRED)

1" S. S. COUPLING FOR
4" C.S. THE STEAM
GUIT & GAUGE

SCHEDULE 40 S. S.
PIPE WATER COUPLER

1 1/2" S. S. NEPPER
EXCERPT FOR
(CONNECTION)

REVISED ISSUE
DESTROY ISSUES DATED BEFORE

APPROVED FOR CONSTRUCTION

BY *R.D.*

DATE *11/12/76*

JOB *86430*

ASME NO. *---*

3" S. S. COUPLING
ALTERNATE WATER OUTLET

Handwritten signature

3" S. S. NEPPLE
STEAM INLET 4"
LONG

1" S. S. NEPPLE INLET
4" LONG

WARRANTY

Walker Stainless Equipment Co. warrants new tanks of equipment manu-
factured by us to be free from defects in material and workmanship under
normal use and service for a period of 1 year after shipment from the factory.

For breach of warranty of any kind, the measure of damages to be recover-
able from Walker Stainless Equipment Co. shall be limited to repair or
replacement of the part or equipment which examination discloses to the
satisfaction of seller to be defective, or the payment of the price or making
such repair or replacement, at the option of the seller.

This warranty is expressly in lieu of all other warranties, expressed or
implied, and all other obligations and liabilities on our part. Any warranty of
merchantability is expressly excluded. We neither assume nor authorize any
other persons to assume for us any liability in connection with the sale of
our products, and no other warranty will be honored unless in writing and
signed by an officer of the corporation. This warranty shall not apply to any
product of our manufacture which has been repaired or altered outside our
factory, or which in our opinion has been subject to misuse, negligence, or
accident. Seller will not assume any charges for repairs made during war-
ranty by anyone other than Walker Stainless. Also, seller assumes no liability
or responsibility for transportation and repair cost, nor any loss of
time due to repairs. This warranty does not cover components of other
manufacturers beyond such warranty as is made by such manufacturers.

Any action for breach of warranty shall be commenced within one (1)
year of date of shipment to the buyer.

STAINLESS EQUIPMENT CO.

NEW LONDON, WISCONSIN

Handwritten signature

APPROVED BY

DRAWN BY

DATE: 8/8/75

REVISIONS

1000 CALUM CORN BOTTLER PROCESSOR

TILL CREAMERY SUPPLY

DELROY PROD. (WHITEHOSE SUPPLY) DEARBORN, MICH.

ST-6979

DRAWING NUMBER

DO NOT SCALE THIS DRAWING

10" DIAPHRAGM GAGE
SENSIBLE 1/2" STEEL CLASS
(3/8") & (3") SWING BOLTS.

INDICATING BALL #16329
WATER TIGHT 193 WATERTIGHT

1 1/2" DIA. FOR MOUNTING 8-11 DRAWING WITH UNSTATED
1 1/2" DIA. MOUNTING 60-65 & 75 PSIG

2" TRI-CLAMP FERRULE W/2"
TRI-CLAMP SOCKET W/2"
REMOVABLE

2" WELD FOR AIR SPACE
THERMOSTAT

(6) LEGS @ 60° APART
SARGO THERMOSTAT
WELD

ZONE CONTROL
VALVE

3" B.S. SCHEDULE
40 PIPE

NOTE:
FOR HEADERS & NOZZLE
DETAILS - SEE DETAIL
DRAWINGS

1 1/2" S.S. MOTOR MOUNT
1 1/2" (41) 9/16" BALLS ON
121" S.C.

1 1/2" TRI-CLAMP FERRULE FOR FUTURE AIR
SPACE HEATER ASSEMBLY

NOTE:

VESSEL CONSTRICTED FOR 10 PSIG PRESSURE
UNLOADING. VESSEL MUST BE VENTED IN GRAVITY
UNLOADING TO PREVENT VACUUM BUILD UP.

2" TRI-CLAMP FERRULE

W/2" - 10 PSI RELIEF VALVE, 2"
AIR & 30 HG TO 15 PSIG GAUGE

5" S. S. BALL BEARING
& REMOVABLE (2 REQ'D.)

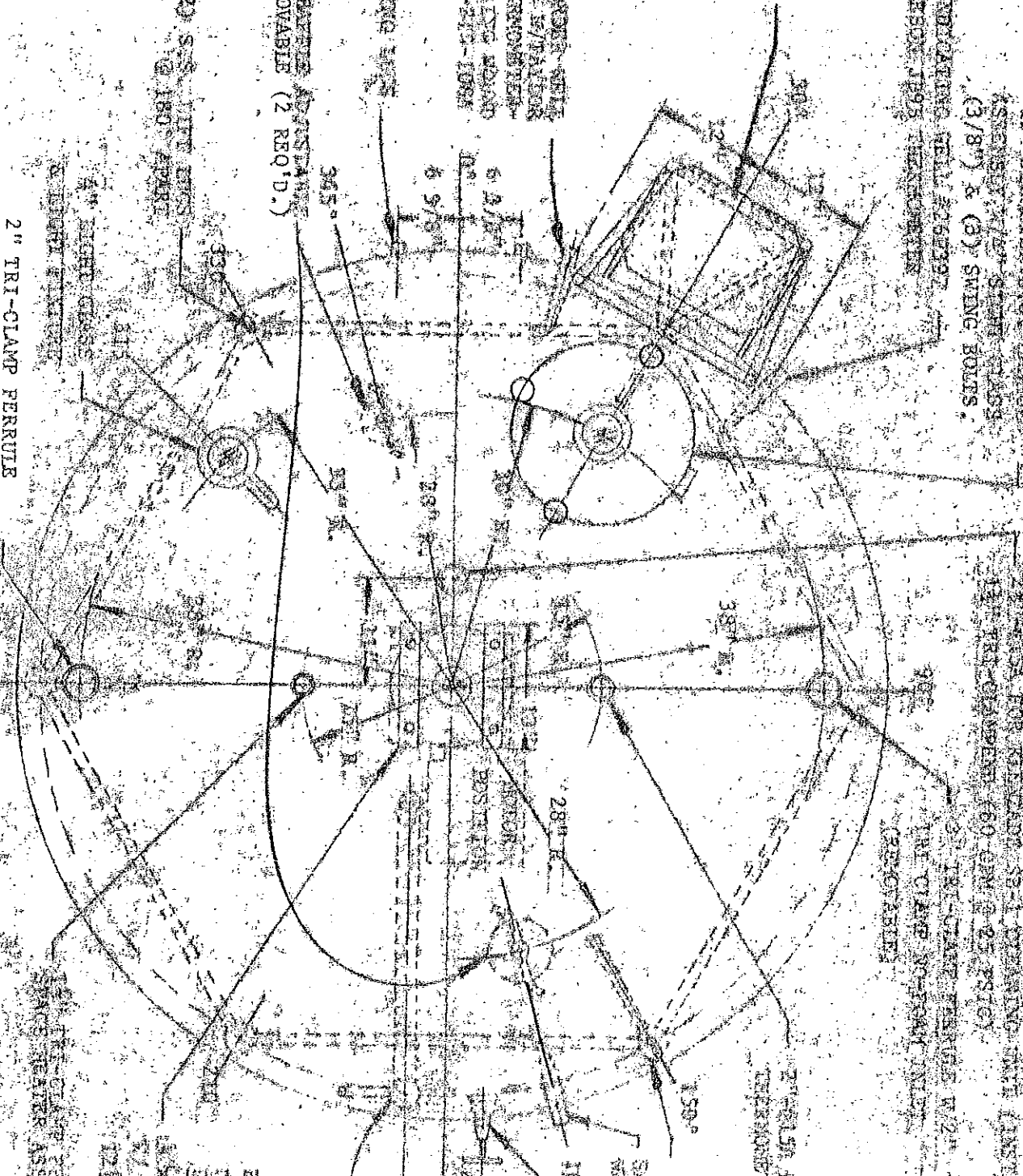
(2) S.S. BALL BEARING
@ 180° APART

4" TIGHT GASKET
REMOVABLE FERRULE

RESPONDER WITH
58-10214 S/TAVAR
EXPANDING THERMOSTAT
1 1/2" HOUS. STRONG BOARD
47-58115-212-1984

RESPONDER MOUNTING BRG

DRAWING 18-3510



18-3510

3/1 1/2 H.P., 14/7 RPM CONSTANT TORQUE TFFC
 RIGHT ANGLE GEAR MOTOR, 230 VOLT, 3 PHASE
 60 CYCLE FRAME #254CG28F, 241/8" OUTPUT

4" REF-GLAMP FERRULE W/
 SPIRIT SEAL & 10" RING CASSETTE

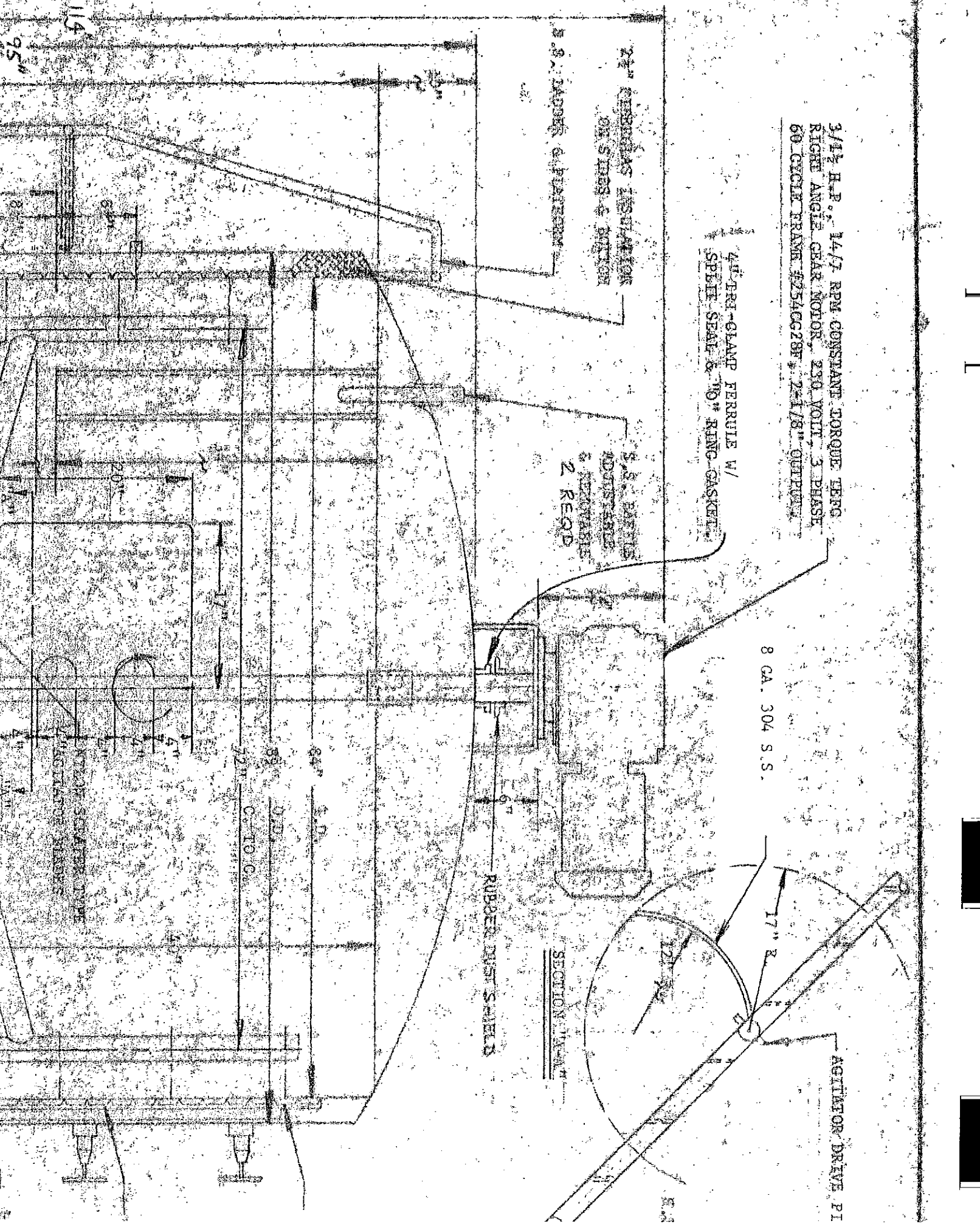
5 S. BALLETS
 ADJUSTABLE
 2 REGRD

SECTION "A-A"

RUBBER MAT SHEETS

8 GA. 304 S.S.

AGITATOR DRIVE PI



95"

114"

E. 1

2" / 2.31 LAGUERRE OPERATED
 NOT KEYS VALVE W/ 2" W/ COMP
 OPERATOR TO OPERATE SERVING TO
 FLOOR

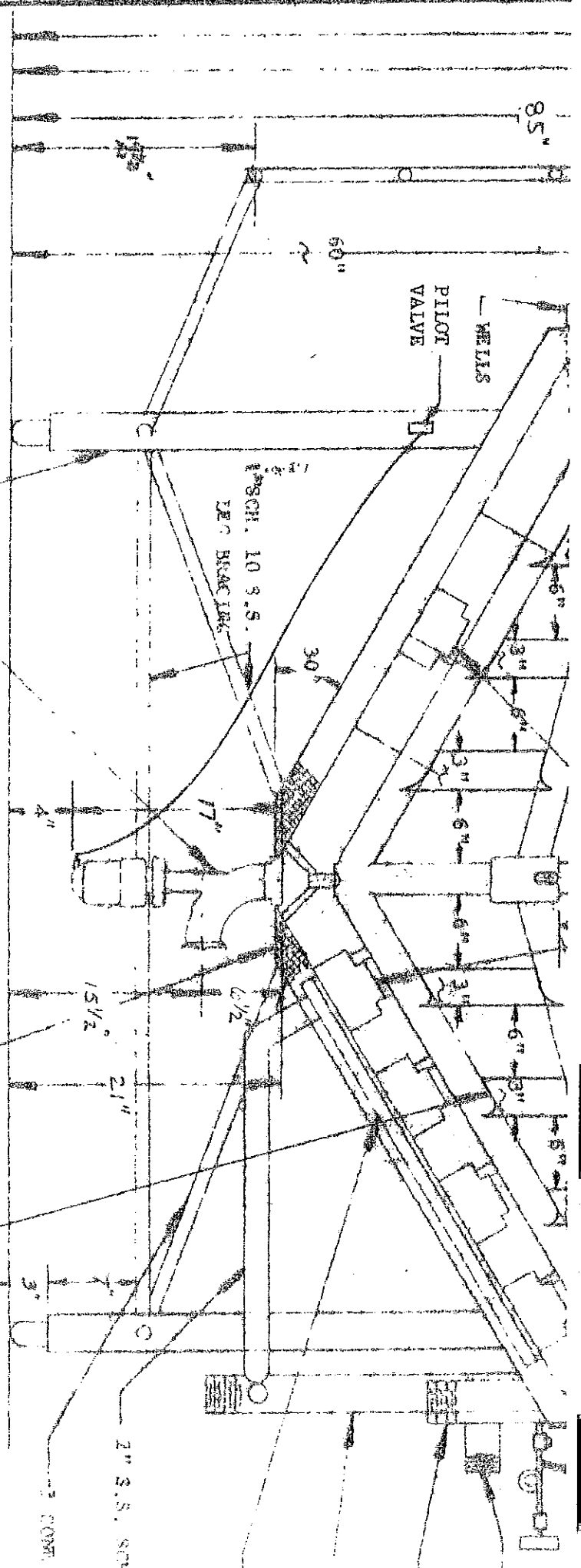
6.3" S.S. TUBE INGS
 W/ADJUSTABLE S.S. BALL FOOT

ELEVATION VIEW
 1" = 1'-0"

1" HOLES W/ VENT
 TANK

CONE OR

8 GA. X 3 1/2" WIDE - SET
 AT 45° ANGLE



NOTE:
 PROCESSOR SUPPLIED WITH STEAM PRESSURE
 TEMPERATURE REGULATOR, STEAM TRAP, & STRAINERS &
 2 SPEED DRUM SWITCH.

MATERIAL:

- Tank Shell: 12GA T304 S.S.
- Top Head: 10GA T304 S.S. (Open Dome)
- Bottom Head: 8GA T304 S.S.
- Heat Exchange Surface: 16GA T304 S.S.
- Insulation: 2 1/2" Fiberglass (Sides & W)
- Outer Wrap: 12GA T304 S.S.
- Bottom Extruder Cone: 12GA T304 S.S.
- Agitator: S.S. W/Nylon Scraper Blade
- Jacket: For Sides & Bottom
- Finish: 100 PSIG at 250°F, test at 250 PSIG Hydrostatic
- Polish: #4 Polish Inside W/No. 6 Polish (P-6)
- #4 Polish Outside W/No. 6