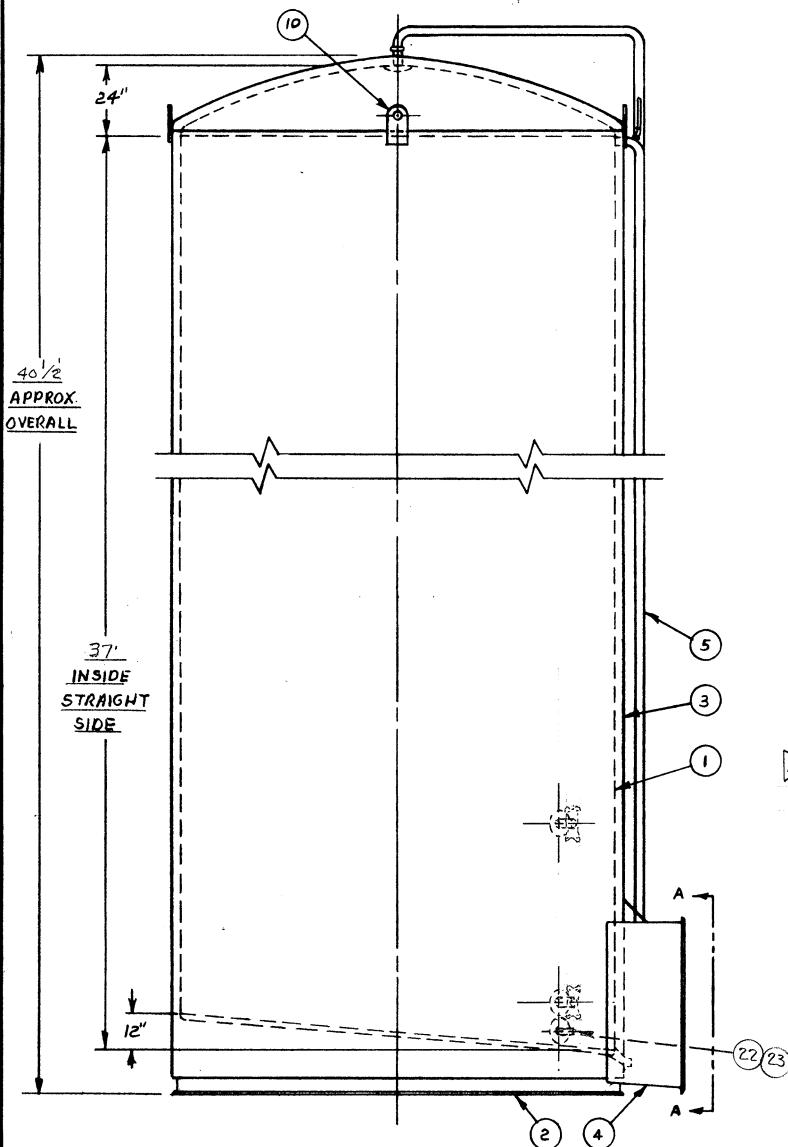


VIEW A-A, SCALE 1"=1'

NOTE: HOLE SIZE IN WALL IS 63" WIDE X 63" HIGH FOR STD. 59 1/4" X 59 1/4" ALCOVE



- NOTE: 1. #4 FINISH INSIDE W/ WELDS GROUND & POL.
 2. OUTSIDE PRIME PAINTED
 3. OUTSIDE WRAP MIN. CIRC. 38' - 11 3/8" AT ANY POINT AFTER LAP WELDING
 4. EST. EMPTY WGT. 30,500 LBS.

ITEM NO.	PART NO.	DESCRIPTION	MATERIAL SPEC.	NO. REQD.
26	—	NUT-HEX 1 1/2" # 13H		REF.
25	—	PAINT, RED OXIDE PRIMER (GAL.)		15
24	—	LUMENITE LEVEL CONTROL SYSTEM	P.O.	REF.
23	A-1556-1-8	FLANGE & GASKET		1
22	A-1931-2	WELL FOR WHITE-ROGER #1609-104		1
21	A-1730-14	SURGE DRUM BRKT.	NOT SHOWN	2
20	C-15136	SURGE DRUM ASSY	NOT SHOWN	1
19	A-1433	THERM. WELL CONDUCTION COMPOUND		1
18	A-1140-9	DIAL THERM. (ROCHESTER 1848-43)		1
17	B-7538	CIP DOOR (NOT SHOWN)	NEOPRENE	1
16	A-3777	CIP HEADER (NOT SHOWN)		1
15	—	GASKET, 3" # 40JP-U(LADISH)	BUNA N	1
14	A-3779	VENT ASS'Y		1
13	C-9661	AGITATOR ASS'Y, 2 HP. 260 R.P.M.		1
12	B-6935	MANHOLE COVER ASS'Y		1
11	A-1374-A	HOLDDOWN LUG	M. STL.	7
10	A-2058	LIFTING EYE	M. STL.	4
9	C-15149	LADDER, WALKWAY & SAFETY CAGE		1
8	A-1556-2/4X*	FLANGE & GASKET		2
7	—	AMMONIA FLANGE UNION 2 1/2" SOC. WELDS (HALF-W/10W)		2
6	—	PIPE 2 1/2" I.P.S. X 4 1/2" LG.	T-304	2
5	C-15144	CIP & OVERFLOW ASS'Y		1
4	C-15143	ALCOVE ASS'Y		1
3	A-11731	OUTER JACKET		1
2	C-3595A	BASE ASS'Y		1
1	C-15131	LINER ASS'Y		1

NO.	REVISION	DATE	ZONE	NO.	REVISION	DATE	ZONE
A	ITEM 22 WAS WELL FOR # DS 235 MERCOID	6-5-78		D			
B				E			
C				F			

30,000 GAL. SILO TANK, 144" I.D. X 37' STR. SIDE

DRAWN BY: _____ D.C. ORDER NO.: _____ CUST. ORDER NO.: _____ E.O. NO.: _____ NEXT ASSEMBLY: _____ PRODUCT GROUP: _____

CHECKED BY: _____

APPROVED BY: _____

SCALE: NONE DATE: 5-30-78

DW.G. NO.: C REV: A

15147



Dairy Craft INC. ST. CLOUD, MINNESOTA