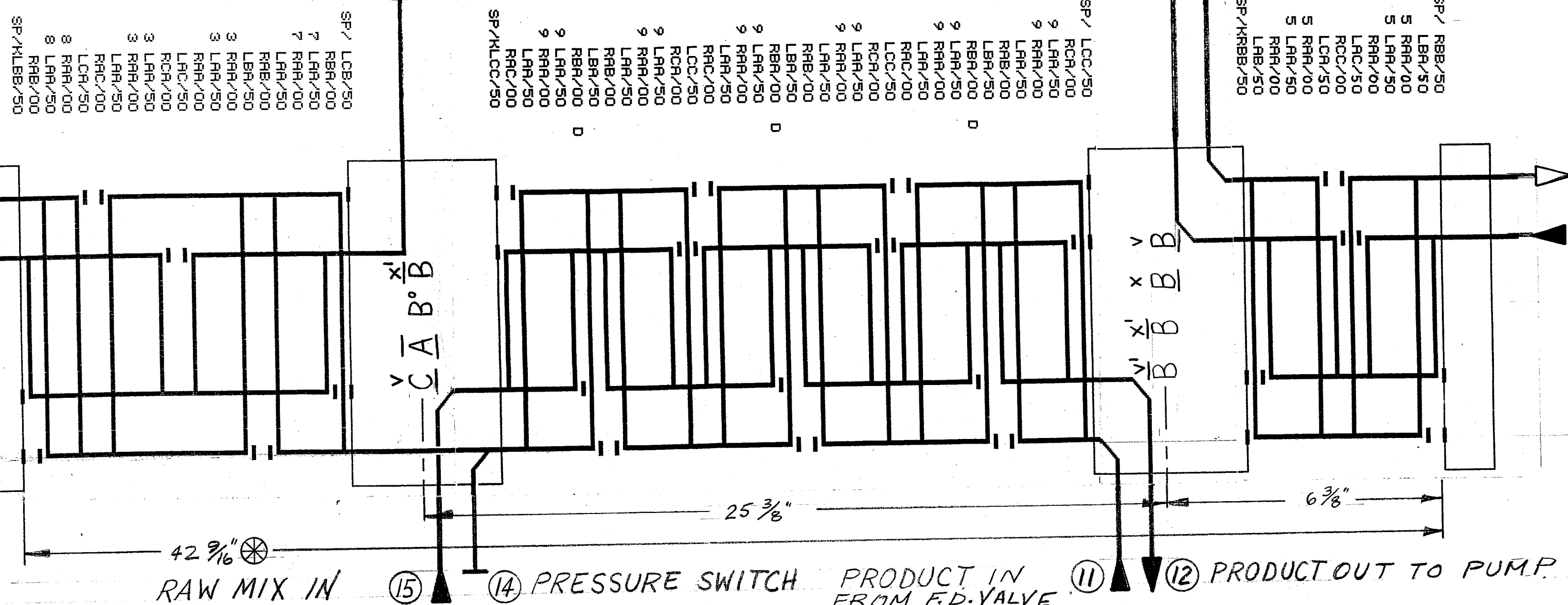


PLATES MUST BE ARRANGED ALTERNATELY LEFT AND RIGHT. FOR CONVENIENCE ON THIS DRAWING, WHERE BLOCKS OF R AND LAA PLATES OCCUR, THE TOTAL NUMBER OF EACH IS GIVEN.

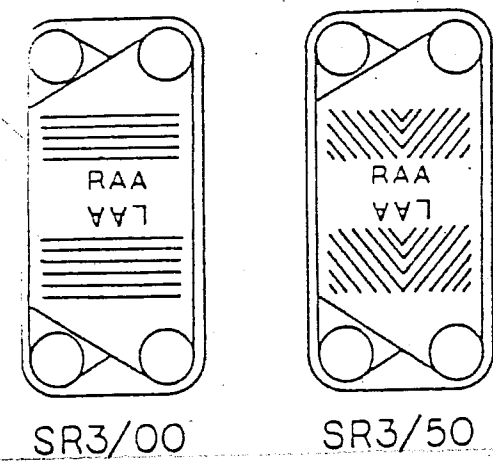
ICE WATER OUT (13) PRODUCT OUT TO HOLD (9) HOT WATER IN (10)

COOLED PRODUCT OUT (6)
ICE WATER IN (5)
FOLLOWER
PORT SUPT. ASSY. (8)
PORT SUPT. ASSY. (7)

HOT WATER OUT (2)
PRODUCT IN FROM TIMING PUMP HEAD (1)
PORT SUPT. ASSY. (4)
PORT SUPT. ASSY. (3)



PLATES SHOWN BELOW ILLUSTRATE SR3 PLATE STYLES

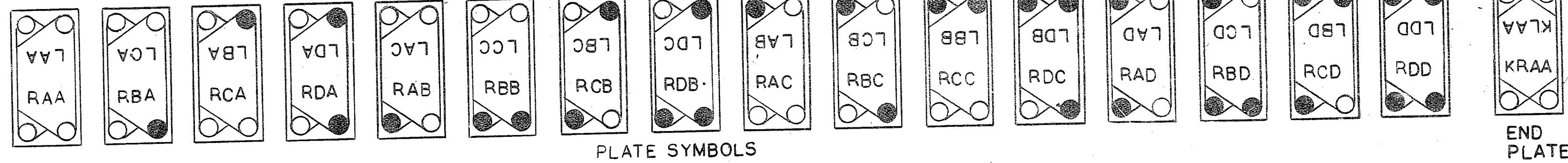


COOLER
MIX - 3 OF 9
ICE WATER - 1 OF 14, 1 OF 13

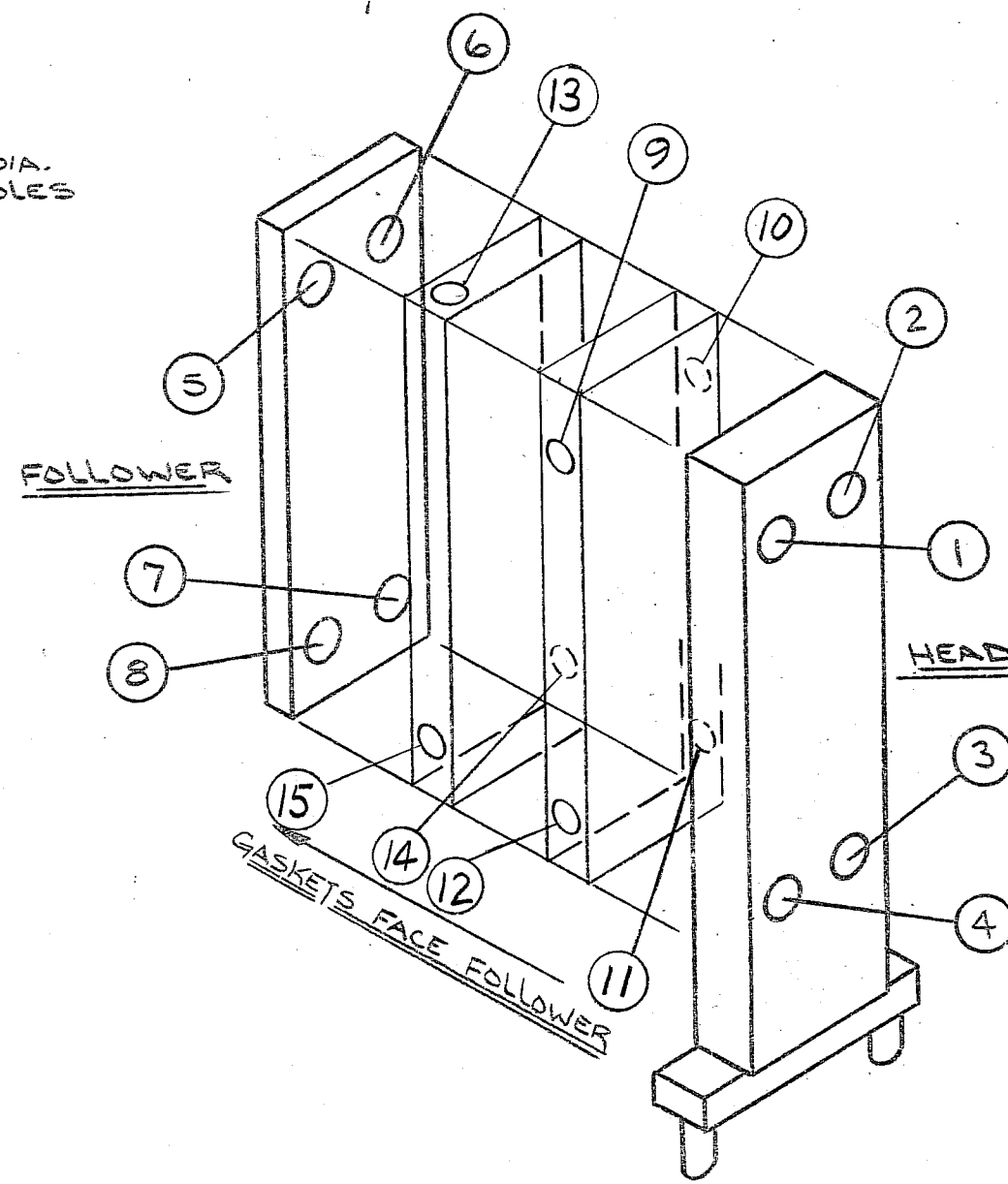
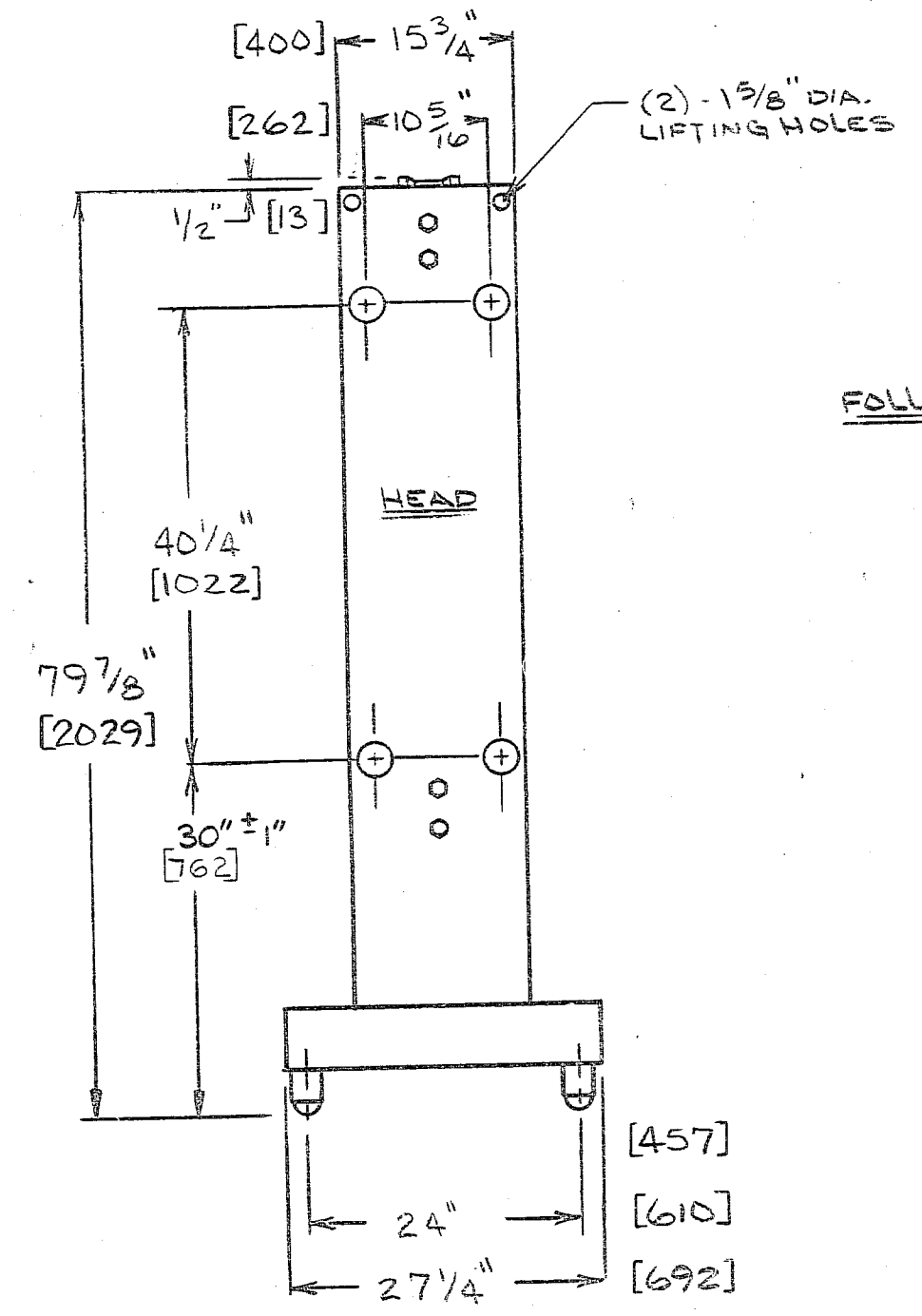
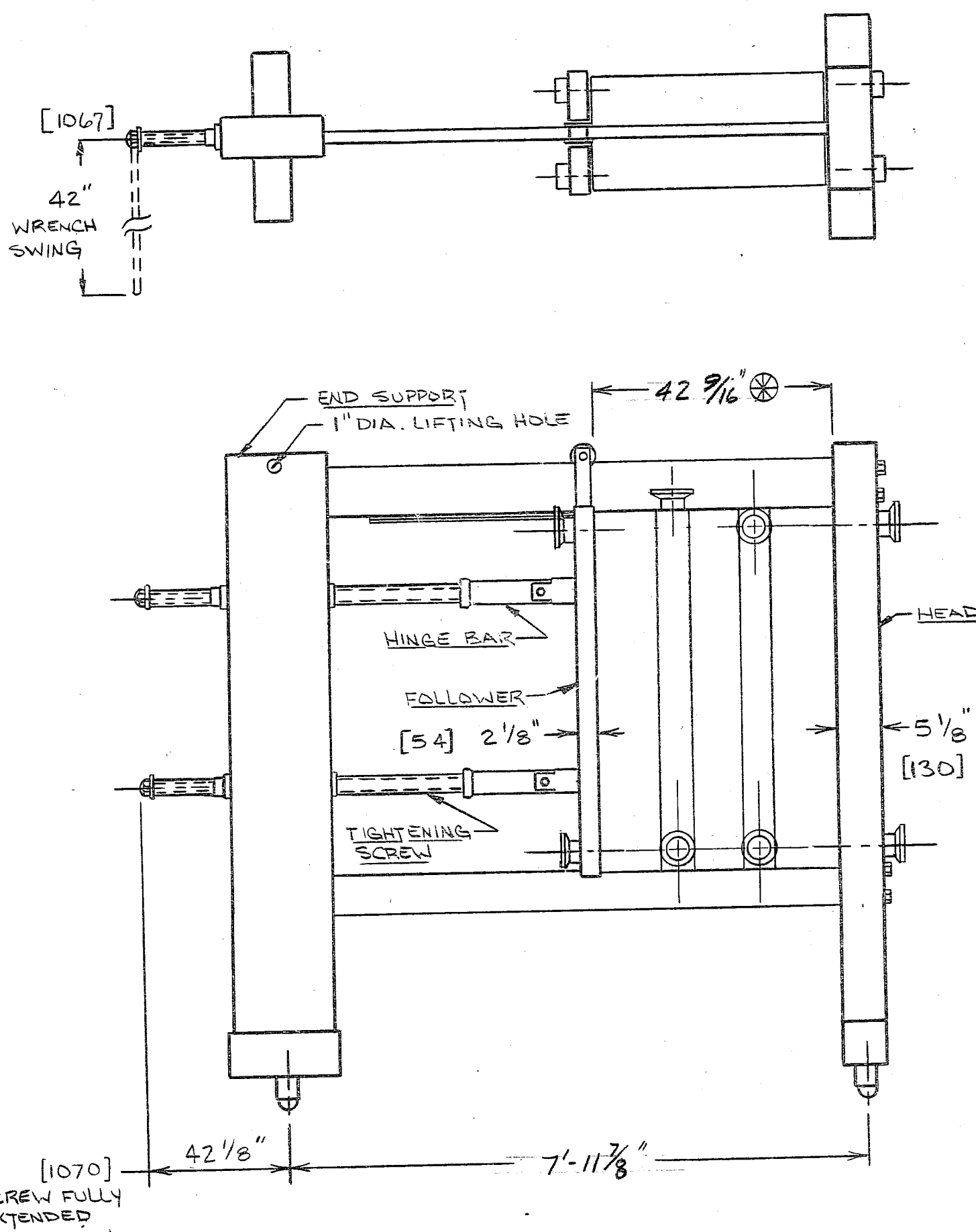
PASSES REGEN
RAW REGEN - 6 OF 11
PAST. REGEN - 6 OF 11

HEATER
MIX - 2 OF 7
HOT WATER - 2 OF 7

ELEVATION OF PLATE ARRANGEMENT



- NOTES:
- ALL PLATES VIEWED FROM GASKET SIDE.
 - END PLATES DENOTED BY LETTER 'K' PRECEDING SYMBOL.
 - THIS MODEL HEAT EXCHANGER IS DESIGNED TO OPERATE WITH METAL TO METAL CONTACT BETWEEN PLATE SURFACES. ALL SUPPORT IS FROM PLATE CROSS OVER POINTS AND NOT FROM GASKET SEAL. THEREFORE THIS MACHINE MUST ALWAYS BE TIGHTENED TO A DEAD HARD CONDITION BEFORE OPERATION. THE PLATAGE DIM. SHOWN IS NOMINAL ONLY. DUE TO PLATE MFG. TOLERANCES PLATAGE CAN VARY ±0.005" PER PLATE.
 - INSTALL PLATES ALTERNATING LEFT AND RIGHT.
 - CUSTOMER'S PIPING TO FOLLOWER OR CONNECTOR GRID NOZZLES MUST ALLOW FOR FREE MOVEMENT WHEN UNIT IS OPENED FOR SERVICE AND PROVIDE FOR VARIATION OF THE TIGHTENED PLATAGE DIM. OF ± 1/2" PER 100 PLATES.
 - ALL DIMENSIONS ARE IN INCHES. DIMENSIONS IN BRACKETS [] ARE IN MILLIMETERS.



LIQUID	RATE	TEMP. °F.	ΔP (Psi)
16% FAT	1500 GPH	50°-161°-180°	RAW REGEN 12
ICE MIX		69°-38°	PAST. REGEN 12
			HEATER 9
			COOLER 11
HOT WATER	75 GPM	185°-178°	19
ICE WATER	150 GPM	34°-39.6°	21

LIST OF PLATES 217 - SR3 T316 S15 PLATES W/ PARACRIL GASKETS	
TOTAL "L" PLATES	TOTAL "R" PLATES
93 LAA/50	88 RAA/00
1 LAB/50	5 RAB/00
5 LBA/50	4 RAC/00
2 LCA/50	1 RBA/00 1 SP/RBB/50
2 LAC/50	4 RCA/00
2 LCC/50	1 RCC/00 1 SP/KRBB/50
1 SP/LCB/50	3 RBA/00D *
1 SP/LCC/50	
1 SP/KLBB/50	
1 SP/KLCC/50	

*"D" DENOTES DRAIN PLATE

FRAME SIZE: #5
MAX. OPERATING PRESSURE: 150 PSI
PLATAGE: 42 9/16 INCHES
VOL. OF PRODUCT: 56.1 GALS.
WT. OF MACHINE DRY: 4495 LBS.
WT. OF MACHINE FLOODED: 5070 LBS.
FITTINGS: 3" 3/16 S/S TRI-CLAMP
PRESSURE SWITCH - 2" 3/16 S/S TRI-CLAMP

MODEL SR310
HEAT EXCHANGER
W.O. 22919

DATE	REVISION	TITLE	
5-18-90	REVISED HEATER SECTION	BRIGHAM ICE CREAM ARLINGTON, MASSACHUSETTS	
3-28-90	REVISED HEATER & REGEN SECTION	4.22919.000	

APV APV CREPACO, INC. 395 FILLMORE AVE. TONAWANDA, NY 14150

DR. BY W. DALESSANDRO W.O. 22919 DATE 3-20-90 DRAWING NO. 4.22919.000

SCALE WTS SUPERCEDES

20" [508] ADDITIONAL REQ'D. TO REMOVE SCREW COMPLETELY