

Baltimore Aircoil Company Evaporative Condenser

Mfg: Baltimore Aircoil Company

Model:

Stock No. ME122007.

Serial No.:

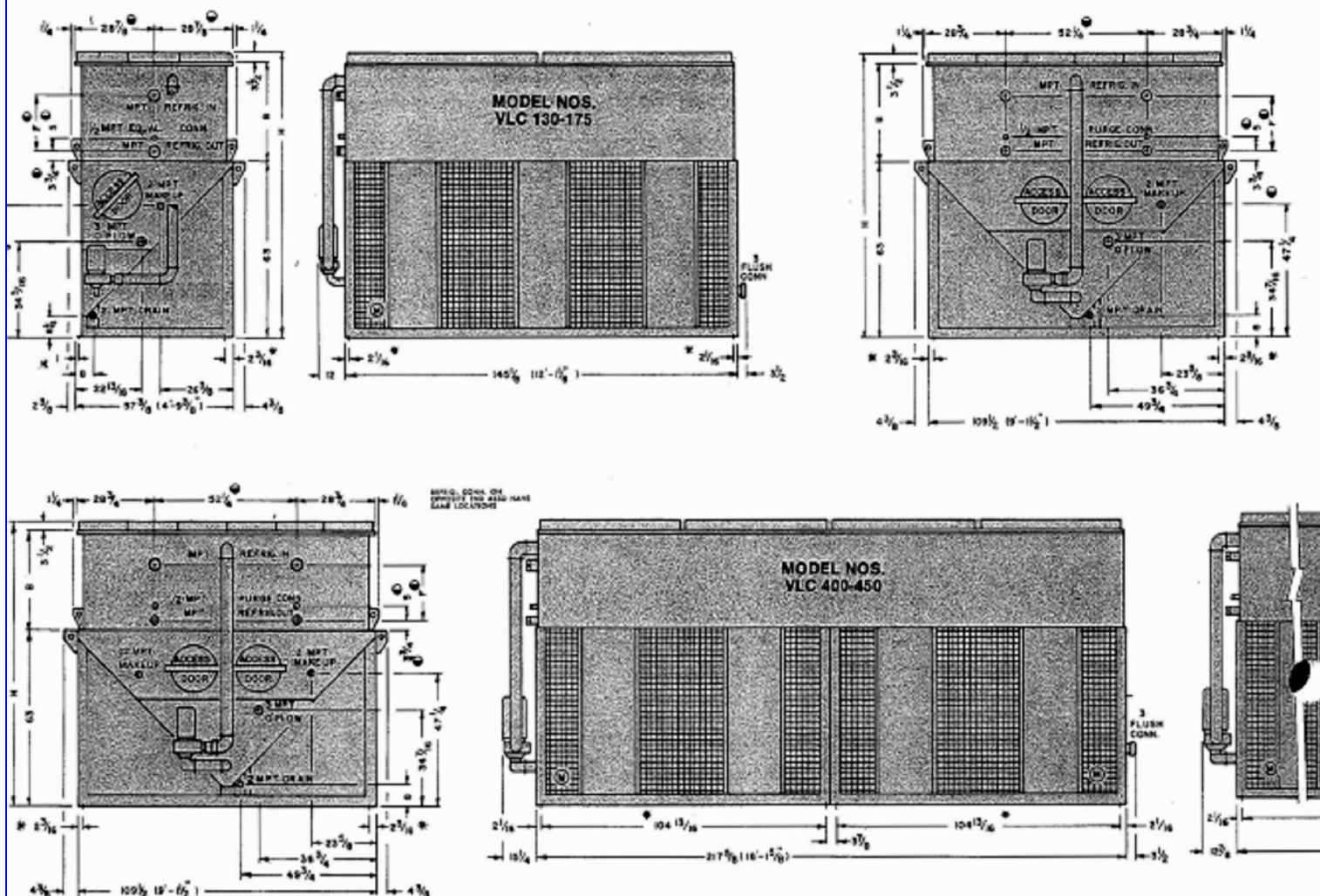
Baltimore Aircoil Company Evaporative Condenser. (6) fans, (2) 10 HP fan motors, 24 rows of tubes @ total of 576 tubes. Overall dimensions: 12 ft. 2 in. L x 9 ft. 1 in. W x 10 ft. 7 in. H.



130 TO 1000 VLC UNIT SIZES

ENGINEER

DO NOT USE FOR CONSTRUCTION. REFERENCE TO THIS DRAWING IS FOR INFORMATION ONLY.



‡ Unit sizes VLC 500 through 1000 have two makeup connections.

○ INDICATES APPROXIMATE DIMENSIONS

⊗ INDICATES FAN MOTOR LOCATIONS

* ⌀ 3/8" MTG. HOLES

NOTES:

1. The standard arrangement for Model Nos. VLC 130 through 175 is with the connections located on the left end when facing the fan section. Connections can be furnished on the right end by special order.

2. Water connections and refrigerant connections are always located on the same end of the unit.

3. Coil connections through Model No. VLC 175 are suitable for R-12, 22 and ammonia. Connections on larger units are sized for ammonia only. For

ENGINEERING DATA

DIMENSIONS

Model No.	Approx. Shop Weight	Approx. Operating Weight	Leaves/Section (Coil)	Minimum Section Clearance	GPM*	CFM	Fan Motor Horsepower					Refrigerant Charge (lb.)	Refrigerant Choice			B	Approx.	Approx.
							ESP	ESR	ESP	ESR	ESP		ESR	R-12	R-22			
VLC 130	9600	10650	5800	64 1/4 x 63	150	28000	10	15	15	15	15	1	350	320	165	51	34 1/2	127
VLC 150	14000	15150	7350	64 1/4 x 63	150	28000	10	15	15	15	15	1	410	370	195	60	43 1/2	127
VLC 175	12100	13150	8200	64 1/4 x 63	150	33000	15	20	20	20	20	1	480	430	220	60	43 1/2	127
VLC 200	13500	15300	8800	118 1/4 x 63	225	44000	2 7/8	2-10	2-10	2-10	2-10	1 1/2	—	—	270	51	85	117 1/2
VLC 225	15400	17100	10600	118 1/4 x 63	225	45000	2 7/8	2-10	2-10	2-10	2-10	1 1/2	—	—	340	60	44 1/2	127
VLC 250	18100	19100	11200	118 1/4 x 63	300	56000	2 7/8	2-20	2-10	2-10	2-10	3	—	—	320	51	85	117 1/2
VLC 300	26100	27500	13600	118 1/4 x 63	300	57000	2-10	2-5	2-15	2-15	2-15	3	—	—	440	60	44 1/2	127
VLC 350	21000	25400	15500	118 1/4 x 63	300	56000	2-15	2-20	2-20	2-20	2-20	3	—	—	520	60	44 1/2	127

* For coil connections, specify an overall section clearances and coil connections, and fan motor.

ING DATA

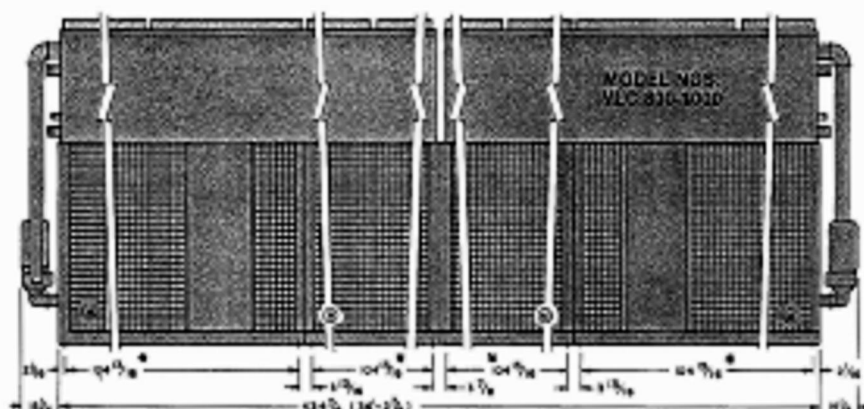
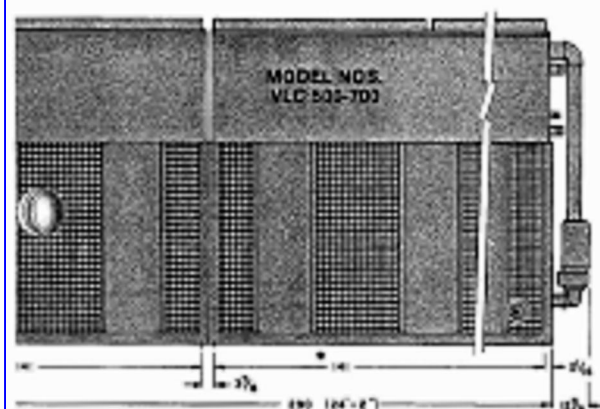
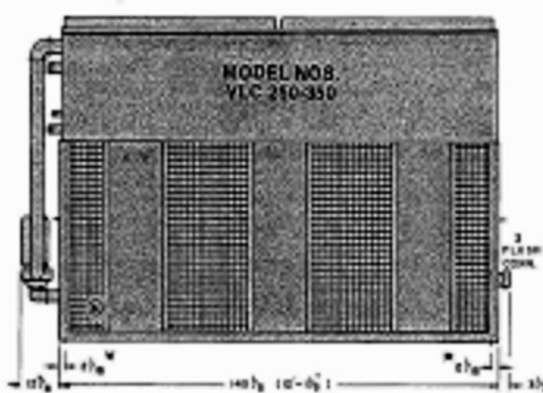
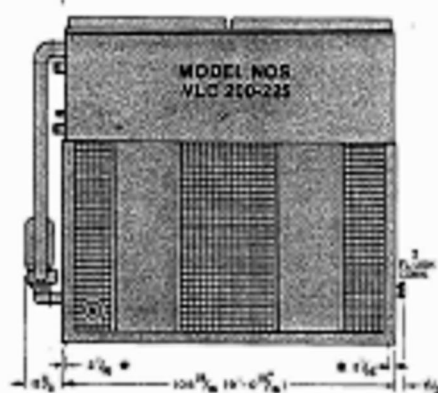
UNIT SIZES VLC 130 TO 1000

TO FACTORY FOR CERTIFIED DIMENSIONS.

CONNECTION SIZES

Unit Size	Conn.	
	Refrig. In	Refrig. Out
VLC 130	4	4
VLC 160	4	4
VLC 175	4	4
VLC 200	2 1/2	1 1/2
VLC 225	2 1/2	1 1/2
VLC 250	2	2
VLC 300	2	2
VLC 350	2	2
VLC 400	2	2 1/2
VLC 450	4	3
VLC 500	3"	2"
VLC 600	3"	2"
VLC 700	3"	2"
VLC 800	3"	2 1/2"
VLC 900	4"	3"
VLC 1000	4"	3"

* Connections on both ends



number and size of connections for other refrigerants as units above VLC-175, consult your B.A.C. representative.

4. For indoor applications of VLC evaporative condensers, the room is normally used as a plenum with duct-

work attached to the discharge only. Hot ductwork can be attached to unit sizes 130 through 175 but an enclosed fan section must be provided. Consult your B.A.C. representative for details.

5. The fans on either side of unit

sizes 200 through 450 can be cycled to give 50% capacity control. Unit sizes 500 through 1000 are constructed in two cells with a common pan. The fans on each side of each cell can be cycled to give 25, 50, 75 and 100% capacity.

ENGINEERING DATA

Model No.	Approx. Total Weight	Approx. Cond. Weight	Cooling Capacity (Tons)	Minimum Required Clearance	GTAF	GVF	Fan Motor Horsepower						Refrig. Motor Horsepower	Pan Drain Size (In.)	H. (In.)	L. (In.)	W. (In.)
							1/2	1	2	3	4	5					
VLC 400	25700	28500	18200	178 1/2 x 63	452	83000	1/2	1	2	3	4	5	50	31	36 1/2	117 1/2	
VLC 450	28600	32000	20500	178 1/2 x 63	452	92000	1/2	1	2	3	4	5	50	31	36 1/2	127	
VLC 500	32700	36500	23200	178 1/2 x 63	600	102000	1/2	1	2	3	4	5	50	31	36 1/2	127	
VLC 600	37800	42350	26500	178 1/2 x 63	600	114000	1/2	1	2	3	4	5	50	31	36 1/2	127	
VLC 700	44300	49350	30400	178 1/2 x 63	600	127000	1/2	1	2	3	4	5	50	31	36 1/2	127	
VLC 800	50000	56700	34000	178 1/2 x 63	600	140000	1/2	1	2	3	4	5	50	31	36 1/2	127	
VLC 900	56700	63700	38500	178 1/2 x 63	600	155000	1/2	1	2	3	4	5	50	31	36 1/2	127	
VLC 1000	63700	70700	43000	178 1/2 x 63	600	170000	1/2	1	2	3	4	5	50	31	36 1/2	127	

DIMENSIONS