

Cutler-Hammer / Eaton Heavy Duty Safety Switch – 100 Amp

Mfg: Cutler-Hammer / Eaton

Model: DH363UGK

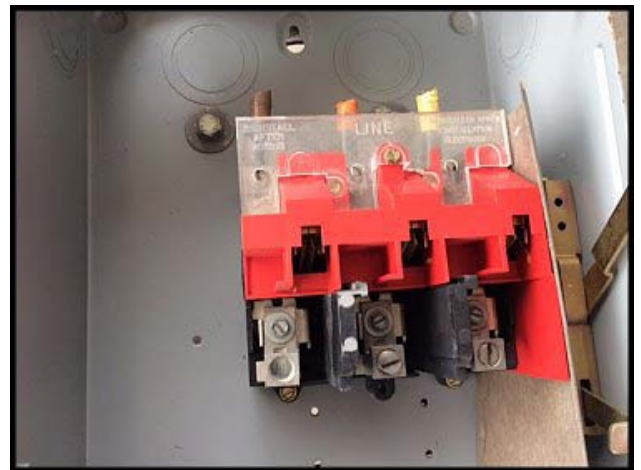
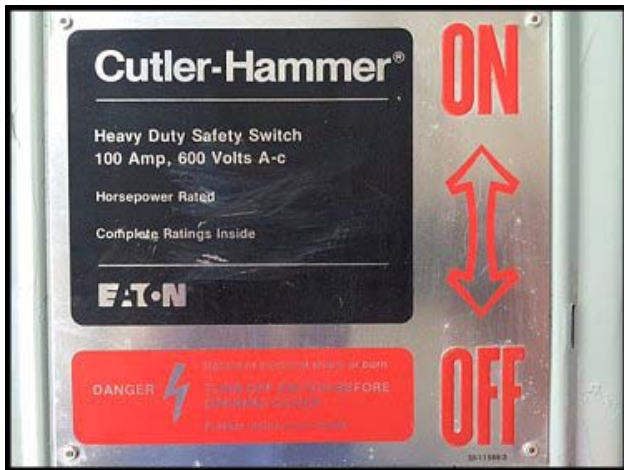
Stock No.: NOI1403

Serial No.:

(35) Cutler-Hammer / Eaton Heavy Duty Safety Switch / Electrical Disconnects. Model: DH363UGK. 100 Amp, 600V Max AC, 250V Max DC, 3 Pole, Type 1 Enclosure. 30-13938-31. Date: 10/05/00. Made in USA. (ACN3a-4a)

Horsepower Ratings:

240 VAC: 20 HP, 1-phase ; 40 HP, 3-phase
480 VAC: 40 HP, 1-phase ; 75 HP, 3-phase
600 VAC: 50 HP, 1-phase ; 100 HP, 3-phase
250 VDC: 20 HP, DC



100 A

600 V. Max AC, 250 V. Max DC, 3 Pole Type 1 Enclosure

Volts	Horsepower Rating			
	1 Phase		3 Phase	
	Std.		Std.	Std.
240 AC	20		40	
480 AC	40		75	
600 AC	50		100	
250 DC				20

Use any two switching poles for DC and 1 Phase AC.

Suitable for Use as Service Equipment when this device is used as Service Equipment, neutral/ground lug kit CH1000K must be installed per instructions included with the kit.

The following replacement parts are available:

Switching Base	70-7758-5
Line Shield	70-7758-35
Operating Mechanism	70-7813
Operating Handle	70-7813-2

10/05/00
30-13538-31

Cutler-Hammer **E-T-N** Made in U.S.A.

DANGER: HAZARD OF ELECTRICAL SHOCK OR BURN

WARNING INSTRUCTIONS

Turn OFF power ahead of switch before doing any work on switch. Replace all parts. Install line shield on switch base. Close cover before turning power ON.

UL UNDERWRITERS LABORATORIES LISTED ENCLOSED SWITCH

E-0239-G

Operating Handle 70-7813-2

10/05/00
30-13538-31

Cutler-Hammer **E-T-N** Made in U.S.A.

DANGER: HAZARD OF ELECTRICAL SHOCK OR BURN

WARNING INSTRUCTIONS

Turn OFF power ahead of switch before doing any work on switch. Replace all parts. Install line shield on switch base. Close cover before turning power ON.

UL UNDERWRITERS LABORATORIES LISTED ENCLOSED SWITCH

E-0239-G

This switch is suitable for use on a circuit capable of delivering not more than 200,000 RMS symmetrical amperes, 480V maximum, or 100,000 RMS symmetrical amperes, 600V maximum, when protected by Class B or J fuses rated 100 amperes maximum. It may be used on circuits capable of delivering not more than 20,000 RMS symmetrical amperes, 600V maximum when protected by any other over-current protective device rated 100 amperes maximum.

TORQUE WIRE PRESSURE SCREWS AS FOLLOWS

Wire size	Slotted head screws		Socket head screws		Torque (lb.-in.)	Remarks
	Torque (lb.-in.)	Socket size Across flats	Torque (lb.-in.)	Socket size Across flats		
14-10 AWG	35	1/8	40	1/8	40	Remove clear plastic line shield and red plastic anti-shield prior to installing lugs and replace both after lugs are installed.
8 AWG	40	5/16	100	5/16	100	
6-4 AWG	45	3/8	150	3/8	150	
3-1/0 AWG	50	7/16	250	7/16	250	

The following crimp type lugs may be field installed in place of line and load terminals.

Wire size	Lug wire size	Terminal	Terminal
14-10 AWG	14-10 AWG	YAC-L	YAC-L
8 AWG	8 AWG	YAC-L	YAC-L
6-4 AWG	6-4 AWG	YAC-L	YAC-L
3-1/0 AWG	3-1/0 AWG	YAC-L	YAC-L

Torque All Lug Mounting Screws to 24 lb.-in.

For Copper bodied lugs order lug kit CH3001. Suitable for Copper conductors only.

CAUTION

Information regarding performance under unusual service conditions should be obtained from Eaton Corporation, Cutler-Hammer Products. Examples of unusual service conditions are:

- (1) Temperatures below -30 degrees C (-22 degrees F)
- (2) Temperatures above +80 degrees C (194 degrees F)
- (3) Altitudes over 6500 feet
- (4) Abnormal vibration, shock, or tilting
- (5) Unusual operating duties
- (6) Frequencies other than 50 hertz
- (7) Mounting the switch in a non-vertical position

STANDARD TERMINALS SUITABLE FOR ALUMINUM OR COPPER WIRE

This switch may be wired with either 60 or 75 Degree C conductors.

100 A

600 V. Max AC, 250 V. Max DC, 3 Pole Type 1 Enclosure

Volts	Horsepower Rating			
	1 Phase		3 Phase	
	Std.		Std.	Std.
240 AC	20		40	
480 AC	40		75	
600 AC	50		100	
250 DC				20

Use any two switching poles for DC and 1 Phase AC.

Suitable for Use as Service Equipment when this device is used as Service Equipment, neutral/ground lug kit CH1000K must be installed per instructions included with the kit.

The following replacement parts are available:

Switching Base	70-7758-5
Line Shield	70-7758-35
Operating Mechanism	70-7813
Operating Handle	70-7813-2

10/05/00
30-13538-31

Cutler-Hammer **E-T-N** Made in U.S.A.

DANGER: HAZARD OF ELECTRICAL SHOCK OR BURN

WARNING INSTRUCTIONS

Turn OFF power ahead of switch before doing any work on switch. Replace all parts. Install line shield on switch base. Close cover before turning power ON.

UL UNDERWRITERS LABORATORIES LISTED ENCLOSED SWITCH

E-0239-G

This switch is suitable for use on a circuit capable of delivering not more than 200,000 RMS symmetrical amperes, 480V maximum, or 100,000 RMS symmetrical amperes, 600V maximum, when protected by Class B or J fuses rated 100 amperes maximum. It may be used on circuits capable of delivering not more than 20,000 RMS symmetrical amperes, 600V maximum when protected by any other over-current protective device rated 100 amperes maximum.

TORQUE WIRE PRESSURE SCREWS AS FOLLOWS

Wire size	Slotted head screws		Socket head screws		Torque (lb.-in.)	Remarks
	Torque (lb.-in.)	Socket size Across flats	Torque (lb.-in.)	Socket size Across flats		
14-10 AWG	35	1/8	40	1/8	40	Remove clear plastic line shield and red plastic anti-shield prior to installing lugs and replace both after lugs are installed.
8 AWG	40	5/16	100	5/16	100	
6-4 AWG	45	3/8	150	3/8	150	
3-1/0 AWG	50	7/16	250	7/16	250	

The following crimp type lugs may be field installed in place of line and load terminals.

Wire size	Lug wire size	Terminal	Terminal
14-10 AWG	14-10 AWG	YAC-L	YAC-L
8 AWG	8 AWG	YAC-L	YAC-L
6-4 AWG	6-4 AWG	YAC-L	YAC-L
3-1/0 AWG	3-1/0 AWG	YAC-L	YAC-L

Torque All Lug Mounting Screws to 24 lb.-in.

For Copper bodied lugs order lug kit CH3001. Suitable for Copper conductors only.

CAUTION

Information regarding performance under unusual service conditions should be obtained from Eaton Corporation, Cutler-Hammer Products. Examples of unusual service conditions are:

- (1) Temperatures below -30 degrees C (-22 degrees F)
- (2) Temperatures above +80 degrees C (194 degrees F)
- (3) Altitudes over 6500 feet
- (4) Abnormal vibration, shock, or tilting
- (5) Unusual operating duties
- (6) Frequencies other than 50 hertz
- (7) Mounting the switch in a non-vertical position

STANDARD TERMINALS SUITABLE FOR ALUMINUM OR COPPER WIRE

This switch may be wired with either 60 or 75 Degree C conductors.

INSTALL PER INSTRUCTIONS SUPPLIED WITH KIT