

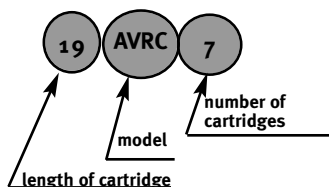
AVRC Cartridge Filter

The MAC Air-Vent Round (AVRC) filter receiver is designed to receive product from a vacuum or pressure system and is a bottom cartridge removal filter.

With a 60° hopper (Style III) the filter receives dust through the hopper inlet and discharges the collected dust through an airlock for dust disposal or recycling.

Arrangement

Inspection door and header at 3:00, exhaust at 9:00, radial inlet at 9:00
 AVRC21 and smaller: mount pads at 12:00, 3:00 and 6:00
 AVRC32 and larger: mount pads at 1:30, 4:30, 7:30 and 10:30
 Hopper can be rotated



Each AVRC filter comes with an informational model number to better identify it.

Standard Specifications

- Carbon steel or 304 stainless steel construction*
- Rated to 40" w.c. static pressure
- Full welded exterior and skip welded interior
- Timing board enclosures: NEMA 4
- Venturi nozzles and bag cups: mineral reinforced nylon
- Lifting lugs: Two on top plenum
- T-handle style hinged inspection door
- 60° hopper flanged to housing (Style III only)
- MAC white paint
- Mount pads

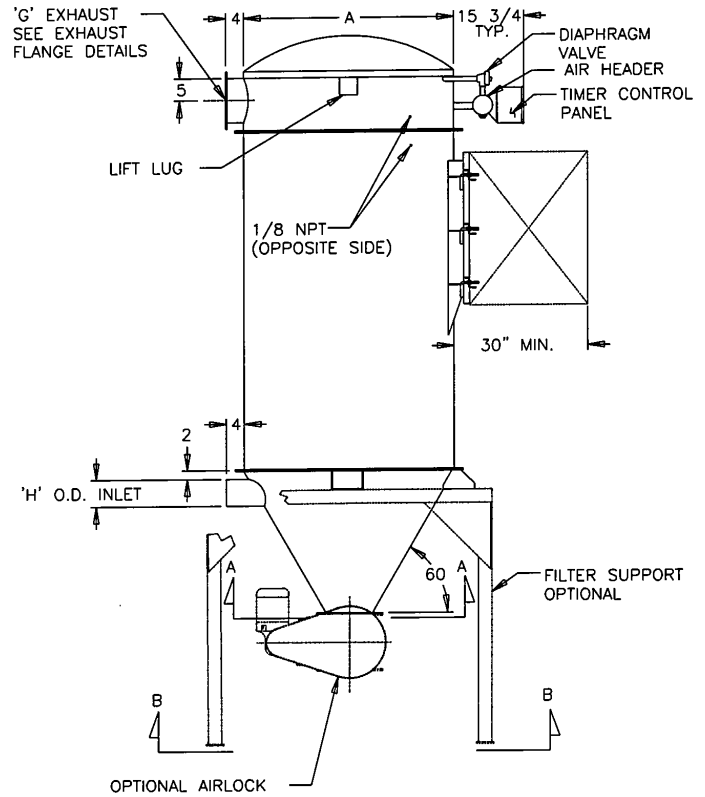
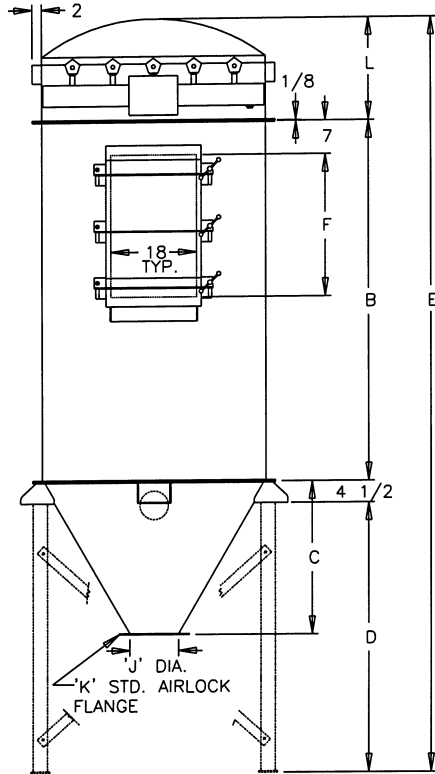
*Standard SS construction includes carbon steel clean air plenum.

Options

- Vacuum rated to 17" Hg service
- Pressure differential gauge kit
- 316 stainless steel
- 70° hopper slope (Style III only)
- Aluminum Venturi
- NEMA 7 or 9 timer enclosure
- Exhaust weather hood with birdscreen
- 4x4 mesh grate
- Carbon steel service platform with ladder and safety cage
- Structural steel legs
- Flanged air inlet
- Side mounted or top mounted fans (restrictions exist - please contact your MAC Sales Representative)

HOPPER SCHEDULE

AIRLOCK FLANGE	'J' DIA. DISCHARGE	Dimensions (IN.)							
		AVRC FILTER / 'C' DIMENSION							
		7	14	21	32	39	52	62	80
MD 20	8	17 ⁹ / ₁₆	28	34	45 ¹ / ₄
MD 40	10	15 ⁷ / ₈	26 ¹ / ₄	32 ⁵ / ₁₆	43 ³ / ₁₆	48 ³ / ₄	54	64 ³ / ₈	72 ¹ / ₈
MD 75	12	14 ¹ / ₈	24 ¹ / ₂	30 ⁹ / ₁₆	41 ¹³ / ₁₆	47	52 ¹ / ₄	62 ⁵ / ₈	70 ³ / ₈
MD 75	14	28 ⁷ / ₈	40 ¹ / ₈	45 ¹ / ₄	50 ³ / ₂	60 ⁷ / ₈	68 ¹¹ / ₁₆
MD 75	15	28	39 ¹ / ₄	44 ⁷ / ₁₆	49 ⁵ / ₈	60	67 ⁷ / ₈
MD 139	16	27 ¹ / ₈	38 ³ / ₈	43 ⁹ / ₁₆	48 ³ / ₄	59 ¹ / ₈	67
MD 139	18	25 ³ / ₈	36 ⁵ / ₈	41 ¹³ / ₁₆	47	57 ⁷ / ₁₆	65 ¹ / ₄
MD 260	19	24 ¹ / ₂	35 ³ / ₄	41	46 ¹ / ₈	56 ⁹ / ₁₆	64 ³ / ₈
MD 260	20	23 ⁵ / ₈	34 ⁷ / ₈	40 ¹ / ₈	45 ¹ / ₄	55 ¹¹ / ₁₆	63 ¹ / ₂



MODEL	FILTER AREA	NO. OF CARTRIDGES	Dimensions (IN.)										MAXIMUM AIRLOCK	SCFM	WEIGHT LBS.	
			A	B	C	D	E	F	G	H	J	K				L
19AVRC7	119	7	28	28	17 ⁹ / ₁₆	40 ³ / ₄	90 ³ / ₈	20	10 DIA.	SIZED	8	MD20	17 ¹ / ₈	MD 40	3.3	520
39AVRC7	252	7	28	48	17 ⁹ / ₁₆	40 ³ / ₄	110 ³ / ₈	30	10 DIA.	PER	8	MD20	17 ¹ / ₈	MD 40	3.3	700
19AVRC14	239	14	40	28	17 ⁹ / ₁₆	51	104	20	10 DIA.	JOB	10	MD40	20 ¹ / ₂	MD 40	4.7	750
39AVRC14	504	14	40	48	26 ¹ / ₄	51	124	30	10 DIA.		10	MD40	20 ¹ / ₂	MD 40	4.7	980
19AVRC21	359	21	47	28	26 ¹ / ₄	57	110 ¹³ / ₁₆	20	10 X 20	SIZED	10	MD40	21 ⁵ / ₁₆	MD 40	5.4	1220
39AVRC21	756	21	47	48	32 ⁵ / ₁₆	57	130 ¹³ / ₁₆	30	10 X 20	PER	10	MD40	21 ⁵ / ₁₆	MD 40	5.4	1370
19AVRC32	547	32	60	28	32 ⁵ / ₁₆	68 ¹ / ₄	123 ¹¹ / ₁₆	20	10 X 20	JOB	10	MD40	22 ¹⁵ / ₁₆	MD 40	6.5	1850
39AVRC32	1152	32	60	48	43 ⁹ / ₁₆	68 ¹ / ₄	143 ¹¹ / ₁₆	30	10 X 20		10	MD40	22 ¹⁵ / ₁₆	MD 40	6.5	2000
39AVRC39	1404	39	66	48	43 ⁹ / ₁₆	73 ¹ / ₂	149 ¹³ / ₁₆	30	10 X 30	SIZED	10	MD40	23 ¹³ / ₁₆	MD 40	7.5	2200
39AVRC52	1872	52	72	48	54	78 ⁵ / ₈	155 ¹¹ / ₁₆	30	10 X 30	PER	10	MD40	24 ⁹ / ₁₆	MD 40	9.1	3170
39AVRC62	2232	62	84	48	62 ⁵ / ₈	89 ¹ / ₄	167 ¹⁵ / ₁₆	30	10 X 45	JOB	12	MD75	26 ³ / ₁₆	MD 139	10.6	3350
39AVRC80	2880	80	93	48	67	97	176 ⁷ / ₈	30	10 X 45		16	MD139	27 ³ / ₈	MD 139	13.2	3950