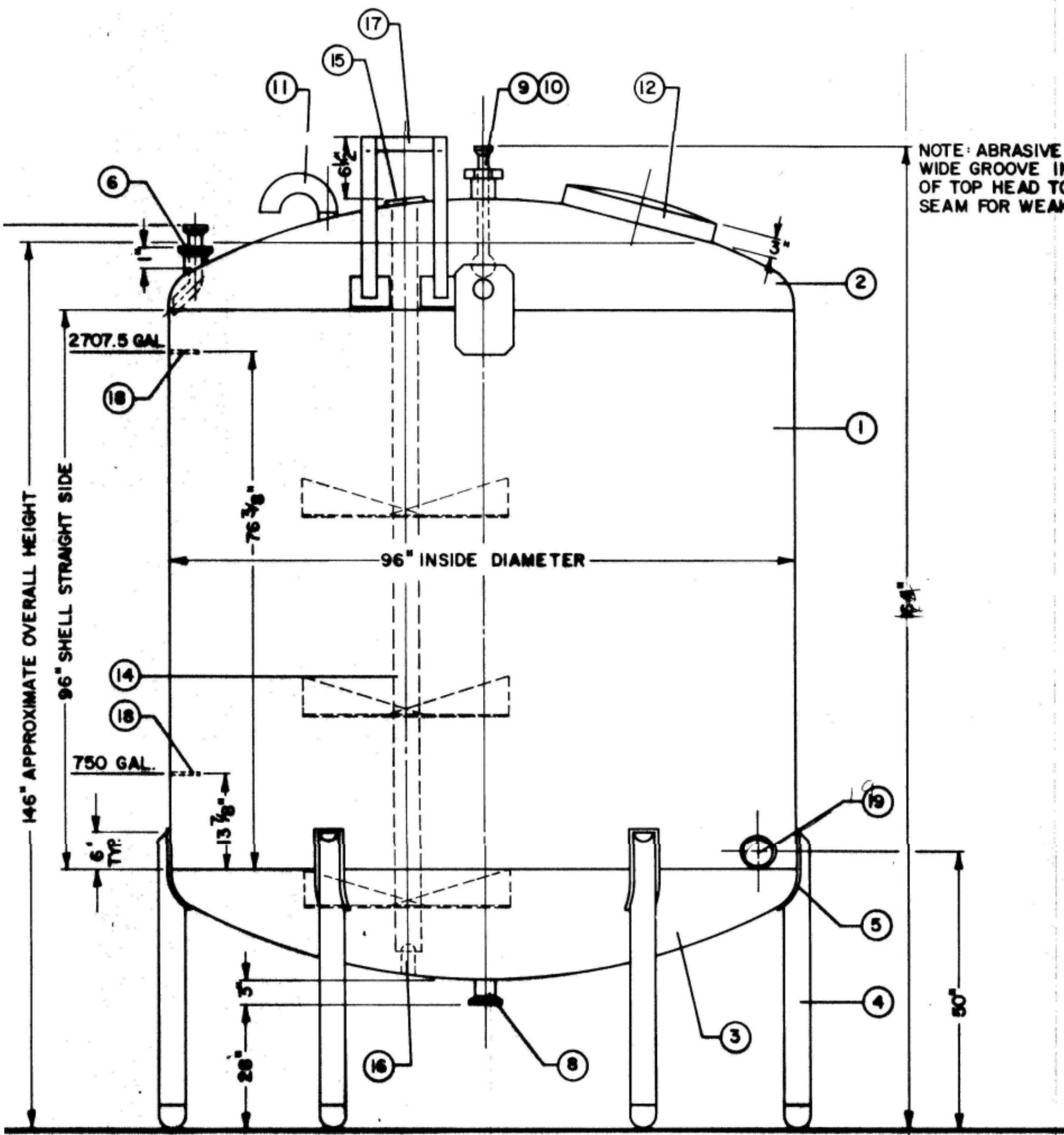
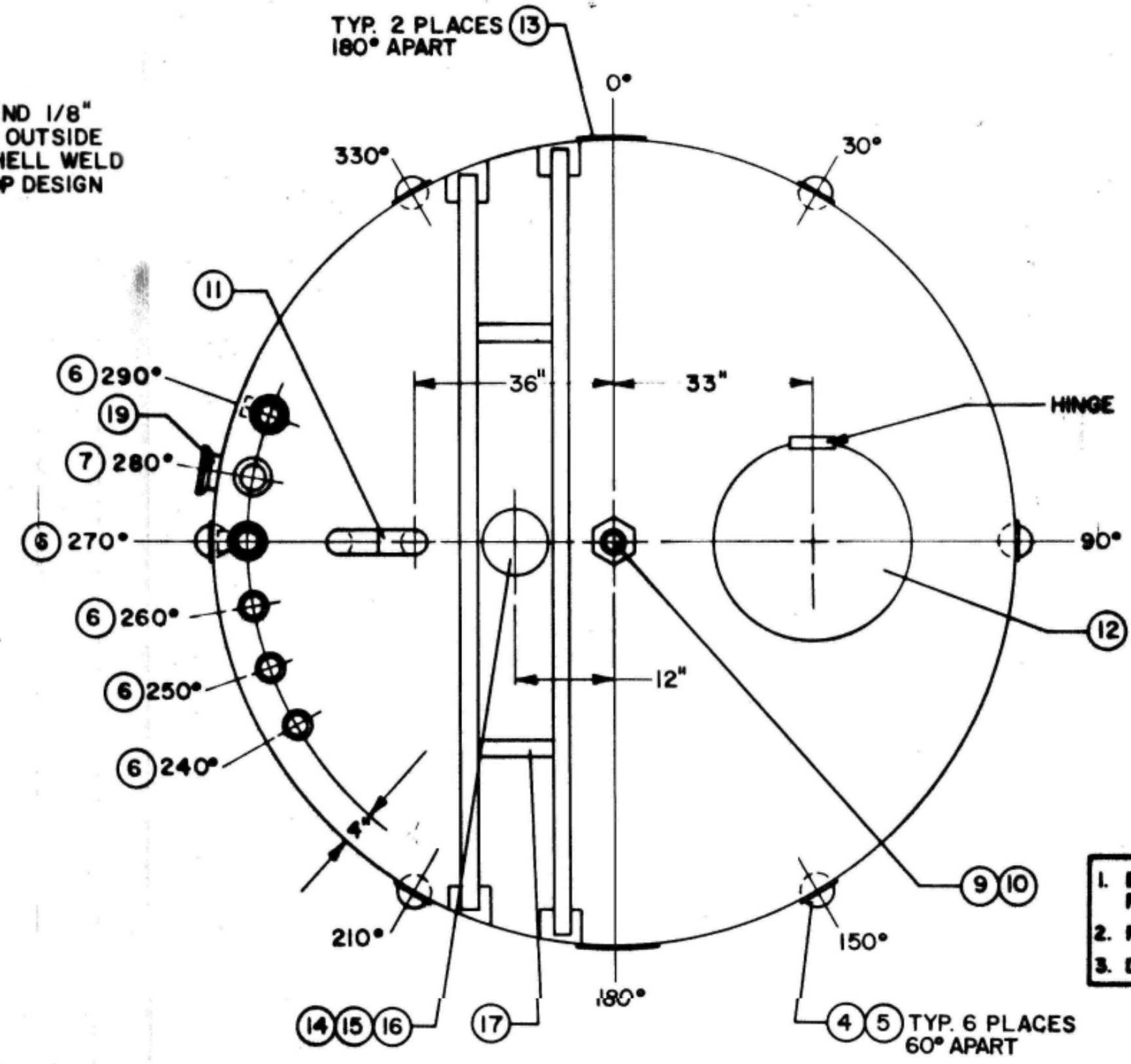


BILL OF MATERIALS

ITEM	DESCRIPTION	REQ'D	ITEM	DESCRIPTION	REQ'D
1	SHELL: 8 GA. T304 STN. STL.	1	13	LIFTING LUGS: T304 STN. STL.	2
2	TOP HEAD: 12 GA. T304 STN. STL. SPUN, FLANGED AND DISHED	1	14	AGITATOR: 3 H.P., 26 R.P.M. T304 S.S. SHAFT w/3 TURBINE BLADES	1
3	BOTTOM HEAD: 10 GA. T304 STN. STL. SPUN, FLANGED AND DISHED	1	15	UPPER SHAFT SEAL	1
4	LEGS: 3" SCH. 40 T304 STN. STL. PIPE w/ ADJUSTABLE FEET	6	16	SANITARY BOTTOM BEARING	1
5	BEARING PAD: 10 GA. T304 STN. STL.	6	17	BRIDGE: 2" SQUARE STAINLESS STEEL TUBE	1
6	INLET: (REMOVABLE NO-FOAM): 2" O.D. TUBE w/ TRI-CLAMP FERRULE T304 S.S.	5	18	CALIBRATION LUG: 3/8" DIA. T304 STN. STL. ROUND BAR	2
7	INLET: 3" O.D. TUBE w/ TRI-CLAMP FERRULE T304 STN. STL.	1	19	TRI-CLAMP: 4" O.D. TUBE 1" LONG w/ TRI-CLAMP FERRULE T304 STN. STL.	
8	OUTLET: 3" O.D. TUBE w/ TRI-CLAMP FERRULE T304 STN. STL.	1		w/ CAP, GASKET and CLAMP	1
9	C.I.P.: KLENZADE SB-1 SPRAYBALL T304 STN. STL.	1			
10	TANK ADAPTER: 2.1/2" T304 STN. STL. TA-1 (REMOVABLE C.I.P.)	1		HV40 62.91:1 RATIO 27.8 RPM ASSEMBLY IA INPUT POSITION E	
11	VENT: 6" - 180° SCREENED VENT ELBOW T304 STN. STL. (SCH. 5)	1		WITH SUGAR SCOOP FOR BALDOR M361IT MOTOR	
12	MANHOLE: 22" PROCESSOR M.H. T304 STN. STL.	1			



TANK FINISH: 2B MILL FINISH; WELDS GROUND SMOOTH AND FILLED INSIDE; RIBBON CLEANED OUTSIDE.



- NOTES**
- BUILD TO API 650 OR ASME SECTION VIII FOR WELD QUALITY.
 - PT ALL WELDS ON PRODUCT VESSEL.
 - DO NOT WELD C.S. DIRECTLY TO S.S.

TANK CONTENTS		
SP. GR. 1.11	CAPACITY 3000 GALLONS	
	TANK	JACKET
OPERATING PRESS.	ATMOSPHERIC	
OPERATING TEMP.	AMBIENT	
DESIGN PRESS.	ATMOSPHERIC	
DESIGN TEMP.	AMBIENT	
TEST PRESS.	DYE CHECK	
TEST TEMP.	AMBIENT	
MAX. ALLOW. PRESS.	ATMOSPHERIC	
② ° TEMP.	AMBIENT	
MIN. METAL ° TEMP.	-20° F	
② PRESS.	ATMOSPHERIC	
DESIGN CODE	NONE	
STAMPING REQ'D.	NONE	
SAFETY/RELIEF DEVICES & SETTING	VENT TO ATMOSPHERE	
HEAT TRANSFER MEDIA & DUTY	NOT APPLICABLE	
AGITATOR DESIGN AND DUTY	WALKER (3) BLADE TURBINE TO MIX PRODUCT	

1	2-1-91	ADDED NOTES AND NOZZLE HEIGHT DIMENSIONS	BMS	812001
REVISION	DATE	REVISION & USE REASON	AUTH.	JOB

WALKER
TINARUS, FLORIDA 32779

SCALE: 3/4" = 12"
DRAWN BY: D. BARRON
SUPERSEDES: DATE: JAN. 10, 1991

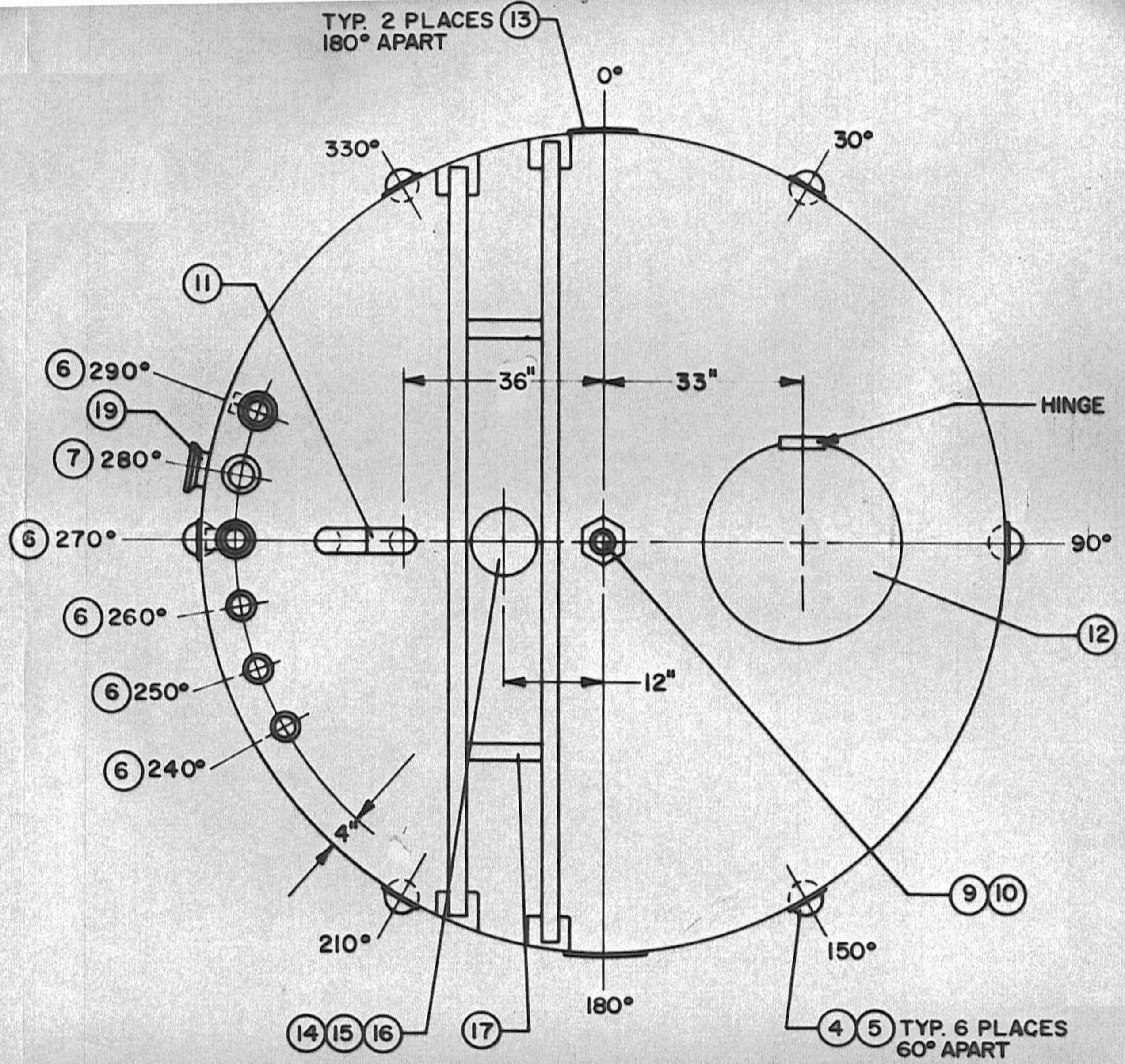
(1) 3000 GALLON BASE PREP. TANK

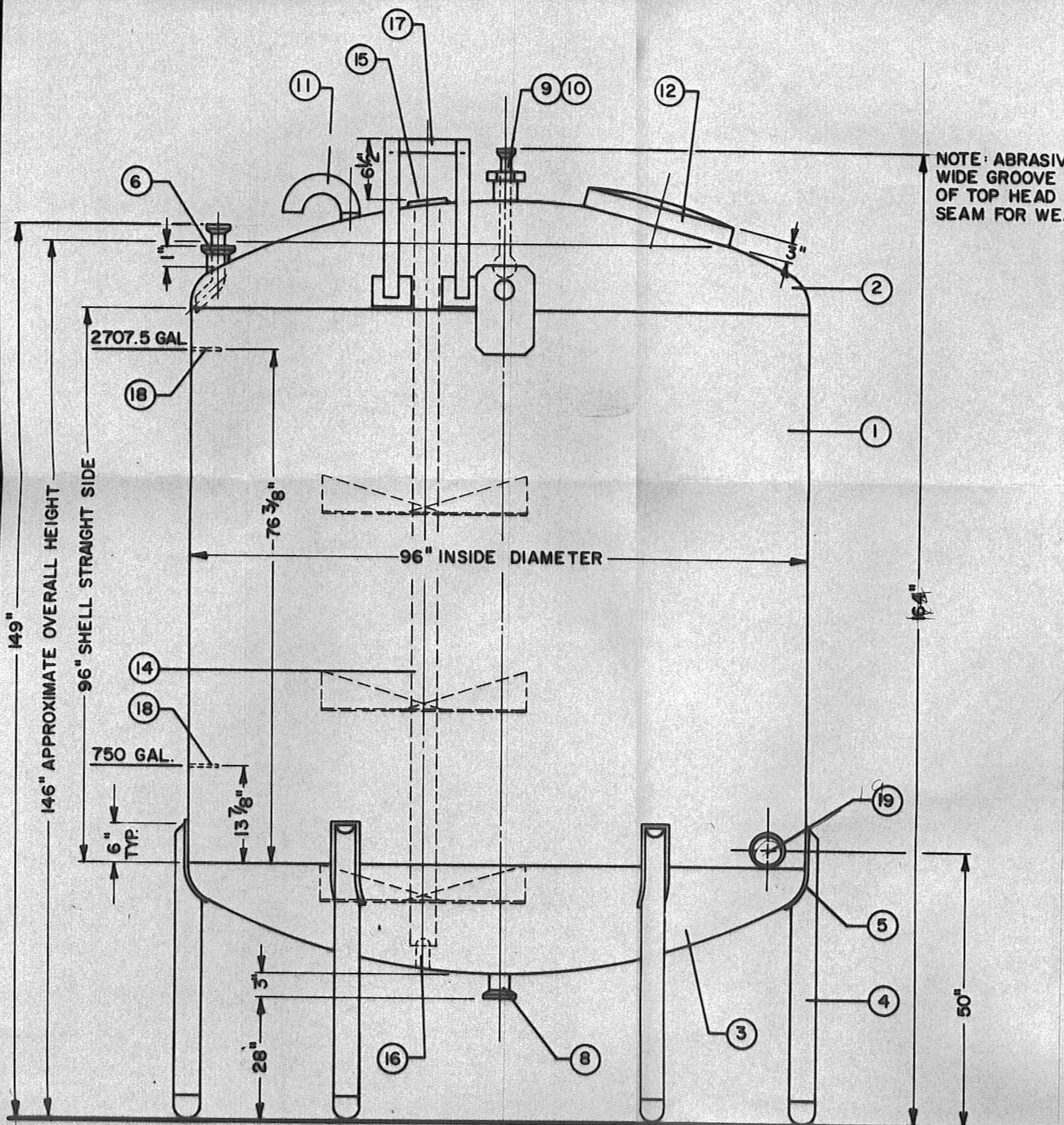
JOB THE CITRUS HILL MFG. CO.
FROSTPROOF, FLORIDA
C-8169 RI

BILL OF MATERIALS

ITEM	DESCRIPTION	REQ'D	ITEM	DESCRIPTION	REQ'D.
1	SHELL: 8 GA. T304 STN. STL.	1	13	LIFTING LUGS: T304 STN. STL.	2
2	TOP HEAD: 12 GA. T304 STN. STL. SPUN, FLANGED AND DISHED	1	14	AGITATOR: 3 H.P., 26 R.P.M. T304 S.S. SHAFT w/3 TURBINE BLADES	1
3	BOTTOM HEAD: 10 GA. T304 STN. STL. SPUN, FLANGED AND DISHED	1	15	UPPER SHAFT SEAL	1
4	LEGS: 3" SCH. 40 T304 STN. STL. PIPE w/ADJUSTABLE FEET	6	16	SANITARY BOTTOM BEARING	1
5	BEARING PAD: 10 GA. T304 STN. STL.	6	17	BRIDGE: 2" SQUARE STAINLESS STEEL TUBE	1
6	INLET: (REMOVABLE NO-FOAM): 2" O.D. TUBE w/TRI-CLAMP FERRULE T304 S.S.	5	18	CALIBRATION LUG: 3/8" DIA. T304 STN. STL. ROUND BAR	2
7	INLET: 3" O.D. TUBE w/ TRI-CLAMP FERRULE T304 STN. STL.	1	19	TRI-CLAMP: 4" O.D. TUBE 1" LONG w/ TRI-CLAMP FERRULE T304 STN. STL.	
8	OUTLET: 3" O.D. TUBE w/ TRI-CLAMP FERRULE T304 STN. STL.	1		w/ CAP, GASKET and CLAMP	1
9	C.I.P. : KLENZADE SB-1 SPRAYBALL T304 STN. STL.	1			
10	TANK ADAPTER: 2.1/2" T304 STN. STL. TA-1 (REMOVABLE C.I.P.)	1		HV40 62.91:1 RATIO 27.8 RPM ASSEMBLY IA INPUT POSITION E	
11	VENT: 6" - 180° SCREENED VENT ELBOW T304 STN. STL. (SCH. 5)	1		WITH SUGAR SCOOP FOR BALDOR M3611T MOTOR	
12	MANHOLE: 22" PROCESSOR M.H. T304 STN. STL.	1			

TYP. 2 PLACES
180° APART





NOTE: ABRASIVE GRIND 1/8" WIDE GROOVE INTO OUTSIDE OF TOP HEAD TO SHELL WELD SEAM FOR WEAK TOP DESIGN

149" APPROXIMATE OVERALL HEIGHT

96" SHELL STRAIGHT SIDE

2707.5 GAL

76 3/8"

96" INSIDE DIAMETER

750 GAL.

13 7/8"

6" TYP.

28"

50"

6

11

15

17

9

10

12

2

1

18

14

18

19

5

4

16

8

3

TANK CONTENTS _____

SP. GR. 1.11 CAPACITY 3000 GALLONS

	TANK	JACKET
OPERATING PRESS.	ATMOSPHERIC	
OPERATING TEMP.	AMBIENT	
DESIGN PRESS.	ATMOSPHERIC	
DESIGN TEMP.	AMBIENT	
TEST PRESS.	DYE CHECK	
TEST TEMP.	AMBIENT	
MAX. ALLOW. PRESS.	ATMOSPHERIC	
@ ° TEMP.	AMBIENT	
MIN. METAL ° TEMP	-20° F	
@ PRESS.	ATMOSPHERIC	
DESIGN CODE	NONE	
STAMPING REQ'D.	NONE	
SAFETY/RELIEF DEVICES & SETTING	VENT TO ATMOSPHERE	

HEAT TRANSFER MEDIA & DUTY
NOT APPLICABLE

AGITATOR DESIGN AND DUTY
WALKER (3) BLADE TURBINE TO MIX PRODUCT

REVISION	DATE	REVISION & USE RECORD	AUTH.	JOB
1	2-1-91	ADDED NOTES AND NOZZLE HEIGHT DIMENSIONS	BMS	B12066



TAVARES, FLORIDA 32778

SCALE: 3/4" = 12"

DRAWN BY: D. BARRON

CHECKED BY:

SUPERSEDES:

DATE: JAN. 10, 1991

DATE:

(1) 3000 GALLON BASE PREP. TANK

JOB THE CITRUS HILL MFG. CO.
FROSTPROOF, FLORIDA

DRAWING NUMBER
C-8169 RI

NOTE - DO NOT SCALE THIS DRAWING!