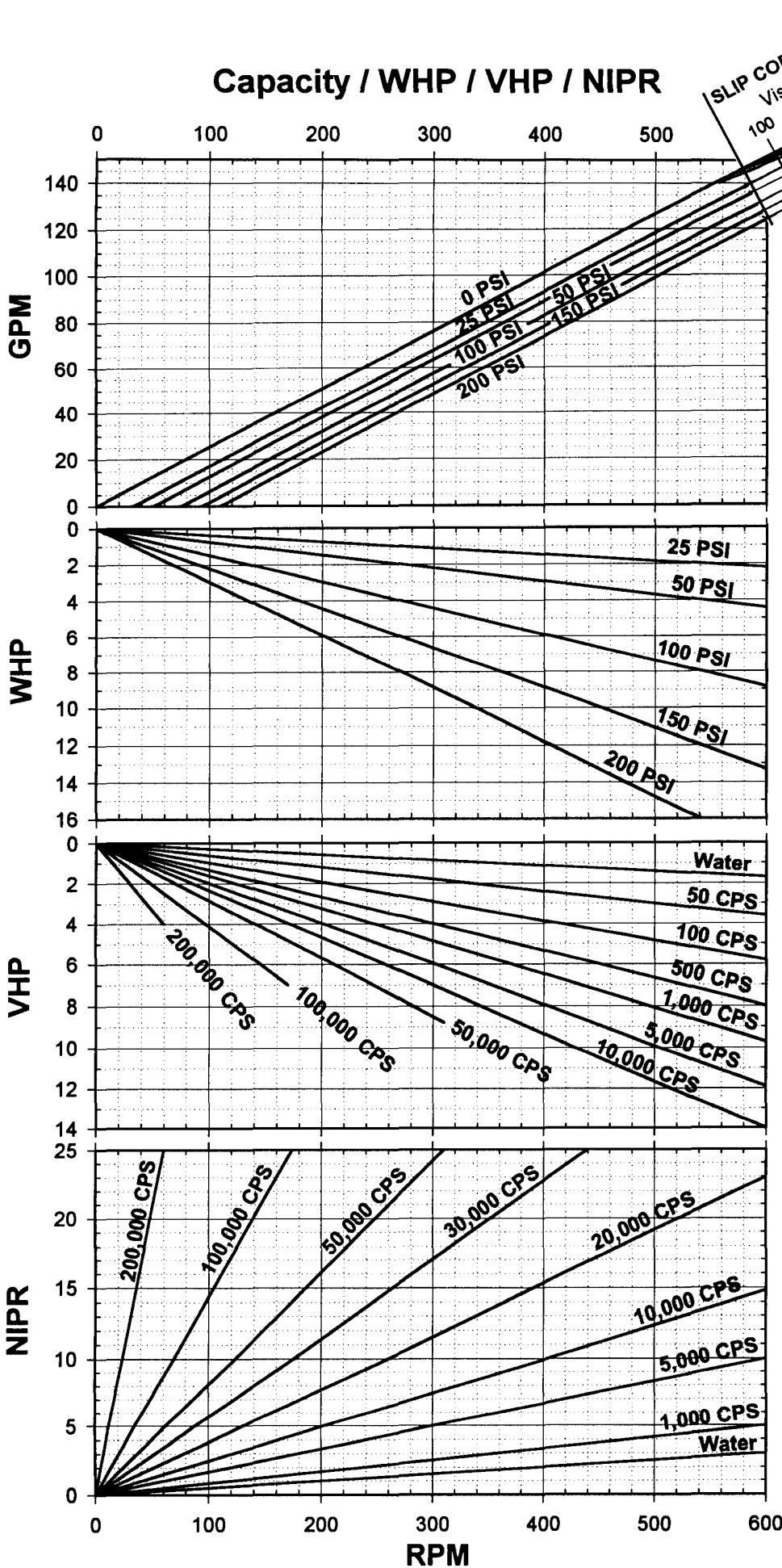


Capacity / WHP / VHP / NIPR



Universal I Sanitary Pumps

130

Alloy 88 Rotors
Standard Clearance
Standard Port Size = 3.0"
Displacement =
0.254 Gal/Rev

BHP = WHP + VHP

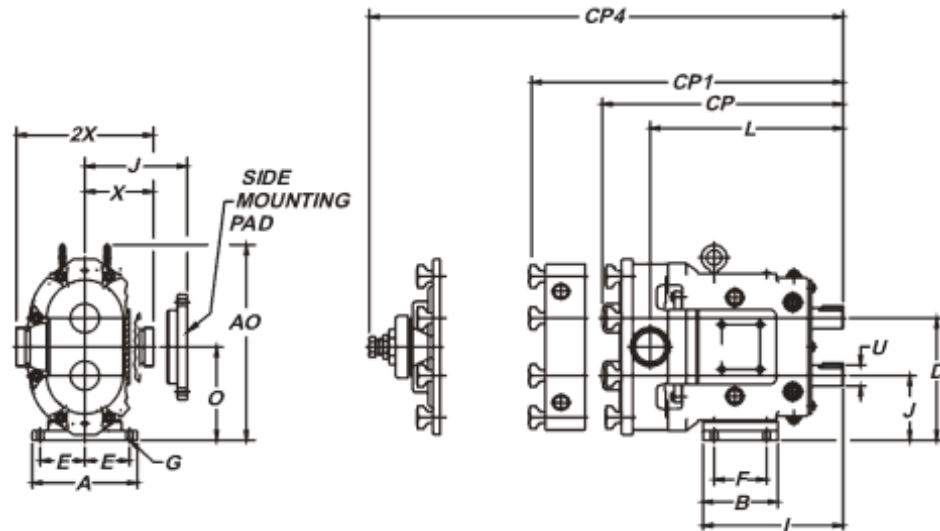


**Waukesha
Cherry-Burrell**

611 Sugar Creek Road
Delavan, WI 53115 USA
Tel: 1-800-252-5200 or 262-728-1900
Fax 1-800-252-5012 or 262-728-4904
E-mail: custserv@gowcb.com
Web Site: <http://www.gowcb.com>

Effective Date: 2-16-2000
Specifications subject
to change without notice

Curve Number
95-07138



	A	AO	B	CP	CP1	CP4	D	E	F	G	I	J	L	O	U	X	2X
IN	8.25	15.31	5.87	19.85	21.63	23.01	9.56	3.50	4.12	.53	10.99	5.06	15.77	7.31	1.625	5.37	10.75
MM	210	389	149	504	549	584	243	89	105	13	279	129	401	186	41.28	136	273

CP= Standard Cover, CP1= Jacketed Cover, CP4= Manual Vented Cover, Connection sizes for Jacketed Covers are 3/4"-14 NPT on Models 006-UI to 030-UI, 1"-11-1/2 NPT on Models 060-UI and 130-UI.

Dimension 'X' and '2X' apply for Bevel Seat, "S"-Clamp, "Q"-Clamp, 15l and 14l fittings.