

Vacuum Pump

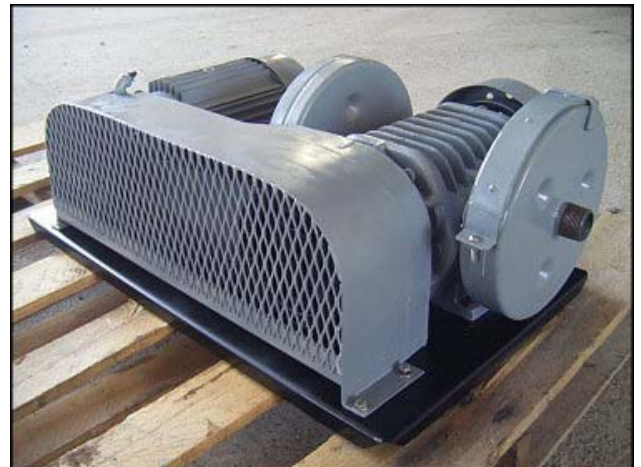
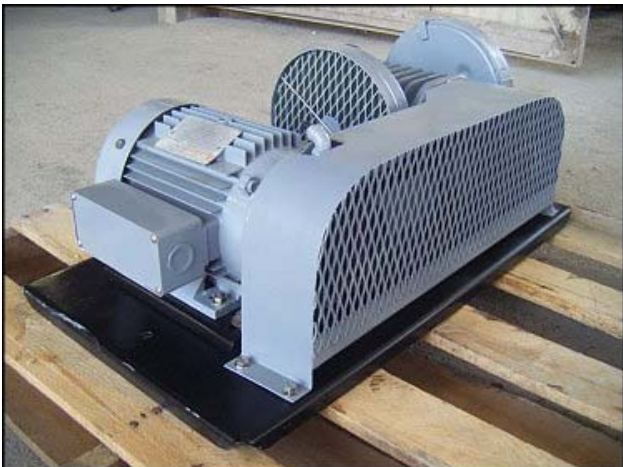
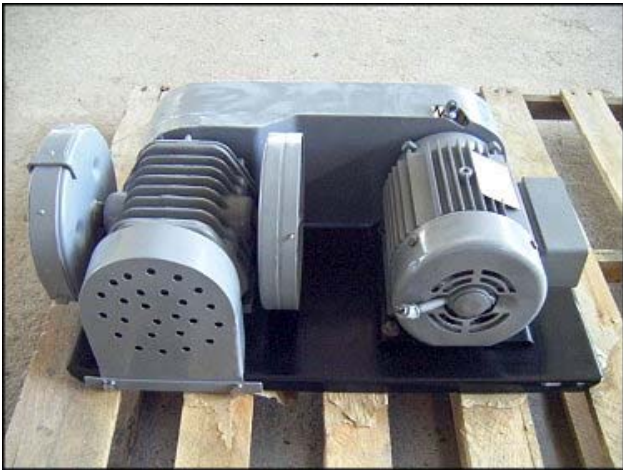
Mfg:

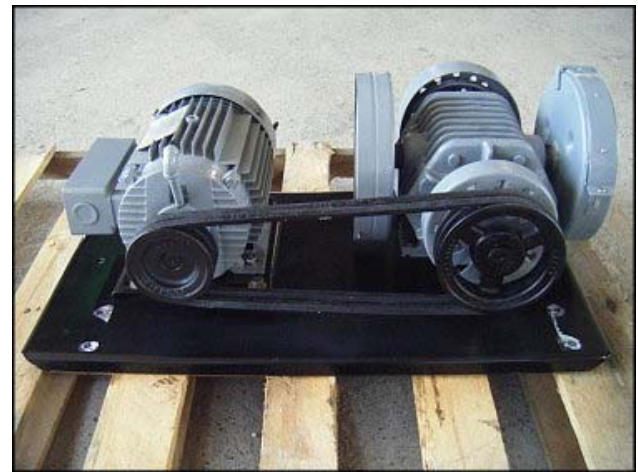
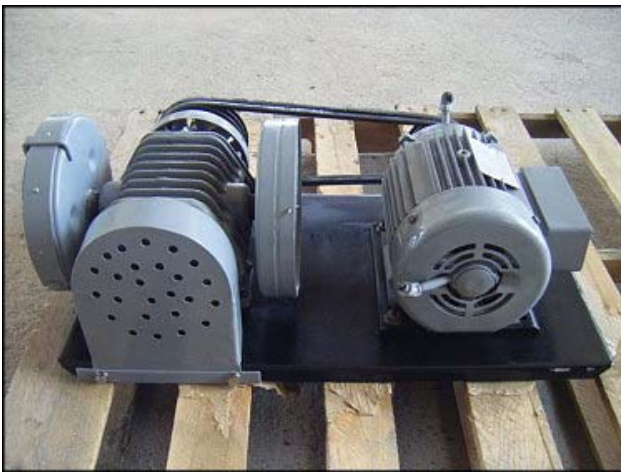
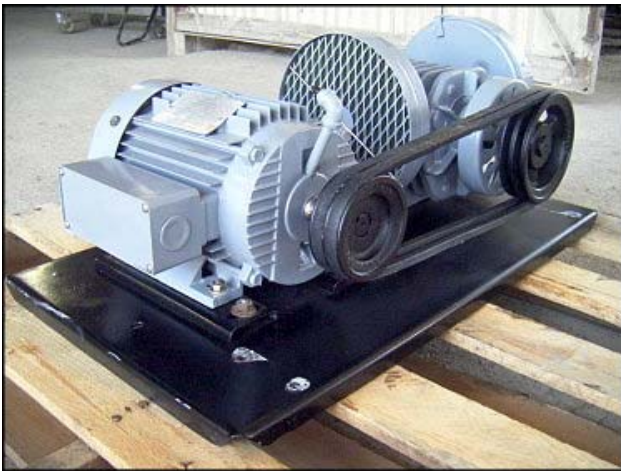
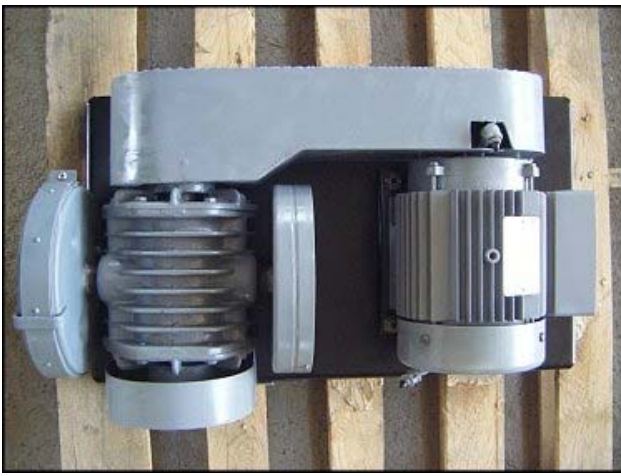
Model:


Stock No: RKFO286A

Serial No:

Vacuum Pump. No manufacturing tag specification of model or serial no. Driver pulley dia. 3-3/4 in. Driven pulley dia. 5-1/2 in. 8-3/8 in. inlet suction disc actual port size dia 1 in NPT. 1 in. NPT outlet. General Electric motor 1-1/2 Hp, 1720 rpm, 230/460 volts, 4.6/2.3 amps, 60 Hz, 3 phase. Overall dimensions: 2 ft. 4-1/4 in. L. x 1 ft. 3-1/2 in. W. x 10-3/4 in. H.





MODEL 5K145AL246		NO. 1 D	
HP 1 1/2	SERVICE FACTOR 1.15		
VOLTS 230/460	PHASE 3	CYCLES 60	
AMP 4.6/2.3			
RPM 1720	TIME RATING CONT		
40 DEG. C MAX. AMB.	INS. CLASS A	NEMA DESIGN B	
145 T	FRAME TYPE K	CODE J	
SHAFT END 25BC02XP		OPP END 17BC02XP	
 GENERAL ELECTRIC TRICKER® INDUCTION MOTOR			