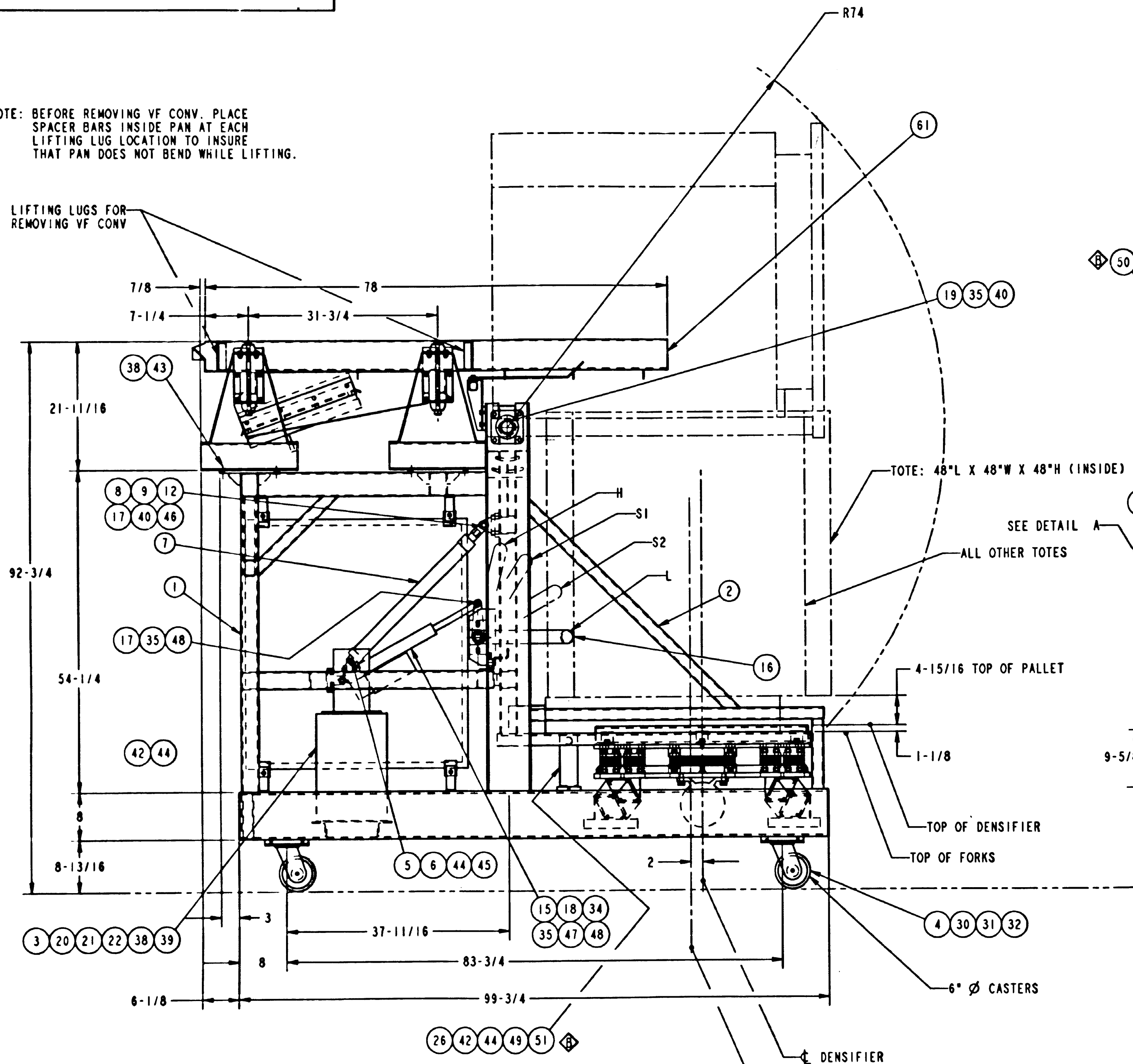
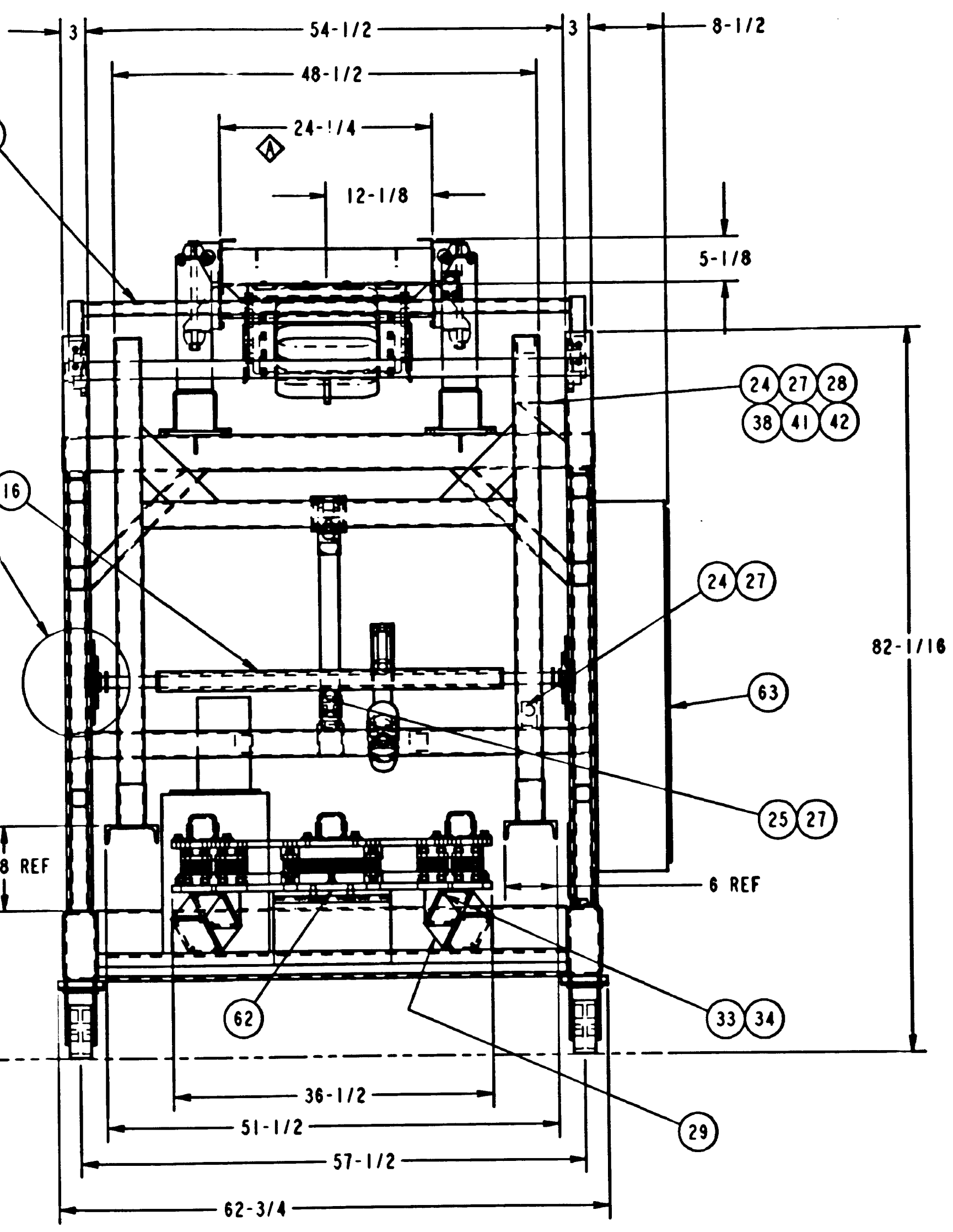


NOTE: BEFORE REMOVING VF CONV. PLACE SPACER BARS INSIDE PAN AT EACH LIFTING LUG LOCATION TO INSURE THAT PAN DOES NOT BEND WHILE LIFTING.



TOTE STOP POSITIONS

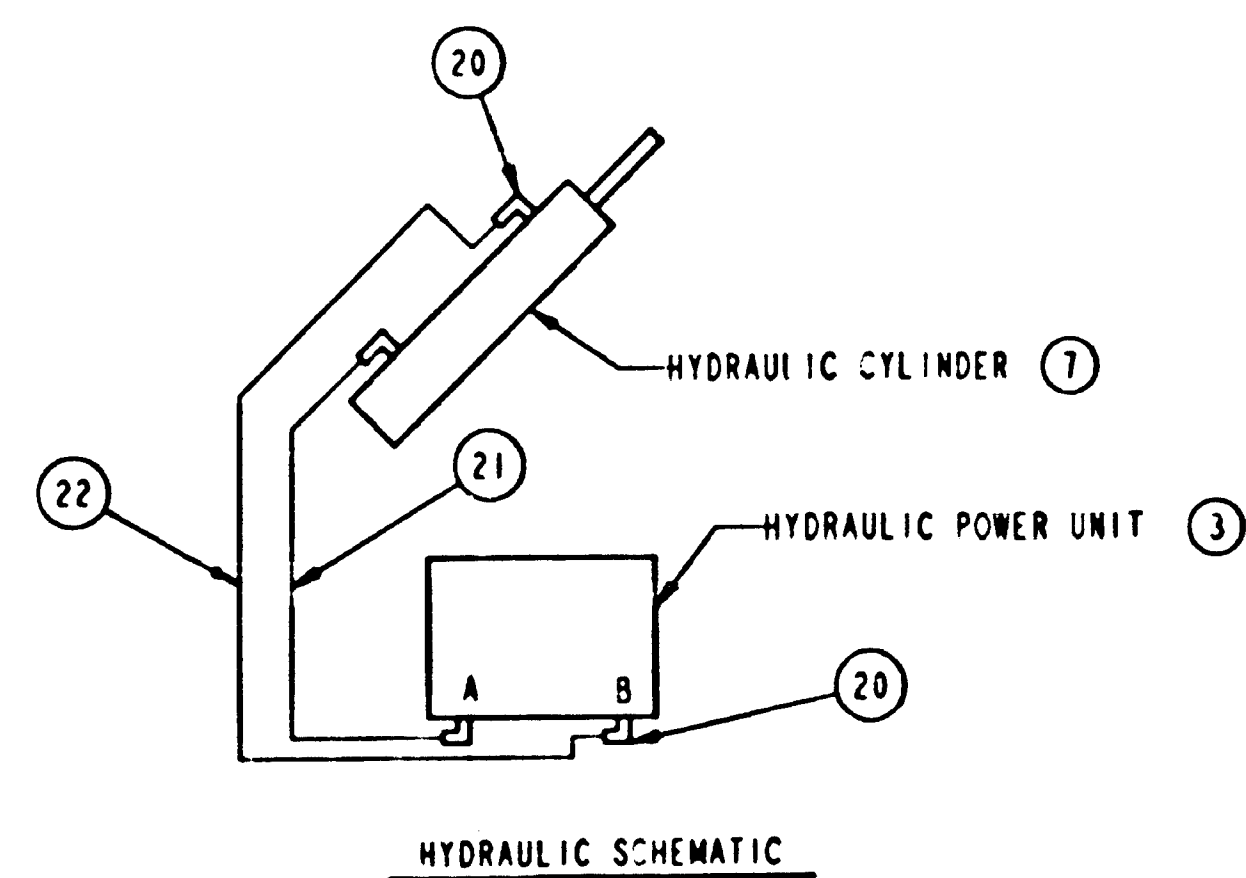
H: HOME POSITION
 S1: STOP FOR 48"W TOTES
 S2: STOP FOR ALL TOTES EXCEPT 48"W
 L: LOCATE ALL TOTES EXCEPT 48"W



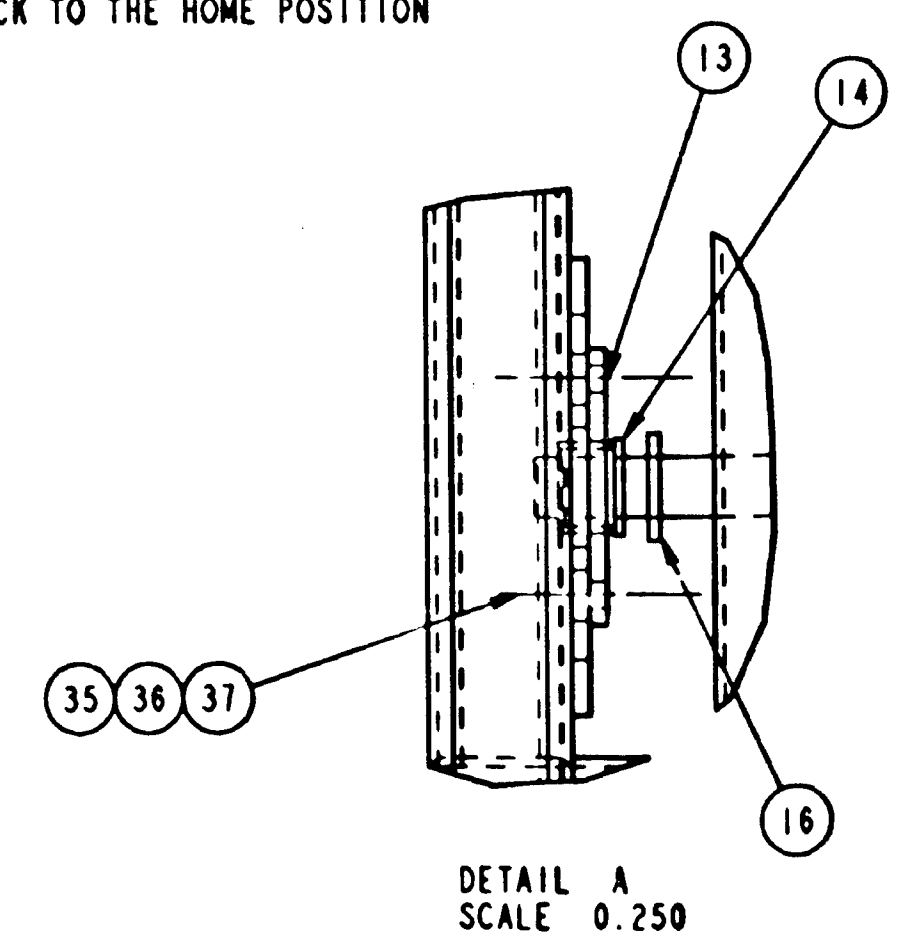
PARTS LIST

GROUP	ITEM	PART NO	DESCRIPTION	QTY
	1	B630080470	TOTE FILLER FRAME ASSY	1
	2	B630080450	TOTE FILLER CRADLE ASSY	1
	3	B63008-809	HYDR-POWER-UNIT	1
	4	B63008-813	SWIVEL CASTER	4
	5	B63008A481	EYE BRACKET MOUNTING PAD	1
	6	B63008-812	EYE BRACKET & PIN #MB-0507	1
	7	B63008-810	HYDRAULIC CYLINDER - 24 STROKE	1
	8	B63008-811	ROD CLEVIS & PIN #RC-1007	1
	9	B63008A486	EYE BRACKET MOUNTING PAD	1
	10		FDA SPEC'S CLASS "A" AS PER 0394X003 EXCEPT OMIT WHITE PAINT	
	12	B63008-819	EYE BRACKET & PIN #MB-0712	1
	13	B63008B269	CARTRIDGE ASSY FOR GATE ASSY	2
	14	A727417-001	BUSHING FOR SWING GATE ASSY	2
	15	D735305-C	CYLINDER MOUNTING BRACKET	1
	16	B63008C495	STOP ARM ASSY	1
	17	D735305-028	SPACER - 1/2 THICK	4
	18	B59679-806	LINEAR ACTUATOR 8" STROKE	1
	19	B63008-814	VSC 4-BOLT FLANGE BEARING	2
	20	B63008-833	*SEAL-LOK* FITTING	4
	21	B63008-834	PARKER HOSE ASSY 37"	1
	22	B63008-835	PARKER HOSE ASSY 58"	1
	23	B63008-823	ULTRA SONIC SENSOR 30mm DIA	1
	24	B62929-803	PROX. SWITCH 18mm (INDUCTIVE)	2
	25	B58383-815	PROX. SWITCH 18mm (CAPACITIVE)	1
	26	B63008-820	PROXIMITY SWITCH 30mm (INDUCTIVE)	1
	27	B62929-805	SPRING RETURN MTG BRKT	3
	28	B63008B497	ADJ. CRADLE SENSOR BRKT	1
	29	D702760-D	ISOLATOR K-4	4
	30	H0113309	LOCK WASHER 7/16 ZN PL	16
	31	H0117101	PLAIN WASHER 7/16 ZN PL	16
	32	H0328901	HX HD CAP SCR 7/16-14 X 1 GR2 ZN PL	16
	33	H0305601	HX HD CAP SCR 5/16-18 X 5/8 GR2 ZPL	16
	34	H0113009	LOCK WASHER 5/16 ZN PL	20
	35	H2100417	LOCKNUT 1/2 ZN PL	14
	36	H0117310	PLAIN WASHER 1/2 ZN PL	4
	37	H0335524	HX HD CAP SCR 1/2-13 X 2 GR5 ZN PL	4
	38	H2100517	LOCKNUT 3/8 ZN PL	22
	39	H0313301	HX HD CAP SCR 3/8-16 X 1-1/4 GR2 ZPL	4
	40	H0335324	HX HD CAP SCR 1/2-13 X 1-1/4 GR5 ZPL	12
	41	H0117001	PLAIN WASHER 3/8 ZN PL	2
	42	H0310201	HX HD CAP SCR 3/8-16 X 1 GR2 ZN PL	8
	43	H0310501	HX HD CAP SCR 3/8-16 X 1-1/2 GR2 ZPL	16
	44	H0113209	LOCK WASHER 3/8 ZN PL	10
	45	H0310101	HX HD CAP SCR 3/8-16 X 7/8 GR2 ZPL	4
	46	H0113609	LOCK WASHER 1/2 ZN PL	4
	47	H0356801	HX HD CAP SCR 5/16-18 X 3/4 GR2 ZPL	4
	48	H0334624	HX HD CAP SCR 1/2-13 X 3-1/4 GR5 ZPL	2
	49	B63008B272	BRACKET (CRADLE BOTTOM)	1
	50	B63008B297	BRKT ASSY AND INSTALLATION DWG	1
	51	H0117010	PL WASHER 3/8 ZN PL	2
	61	B63008B002	VF 2405 X 6" 6" LG VIB FEEDER	1
	62	B63008B003	TOTE DENSIIFIER	1
	63	B63008B004	CONTROL BOX	1

FRAME ASSY CONSTRUCTION: MILD STEEL PAINTED WITH HENTZEN STN STL POLYURETHANE.



NOTE: FOR MORE DETAILED INFORMATION REFER TO HYDRAULIC MANUAL FOR TOTE FILLER.



DETAIL A SCALE 0.250

TOTE SIZES (ALL DIMENSIONS ARE INSIDE TOTE)	TORQUE SPECIFICATIONS	
	CONNECTION	TORQUE (FT-LBS)
34-1/2"L X 34-1/2"W X 48-1/2"H	CASTER MTG (IT. 30)	30
35"L X 35"W X 47-1/2"H	VF MTG (IT. 41)	19
45"L X 36"W X 48-1/2"H	FL BRGS (IT. 38)	75
47"L X 38"W X 50-1/2"H	STOP ARM MTG (IT. 35)	75
48"L X 48"W X 48"H		

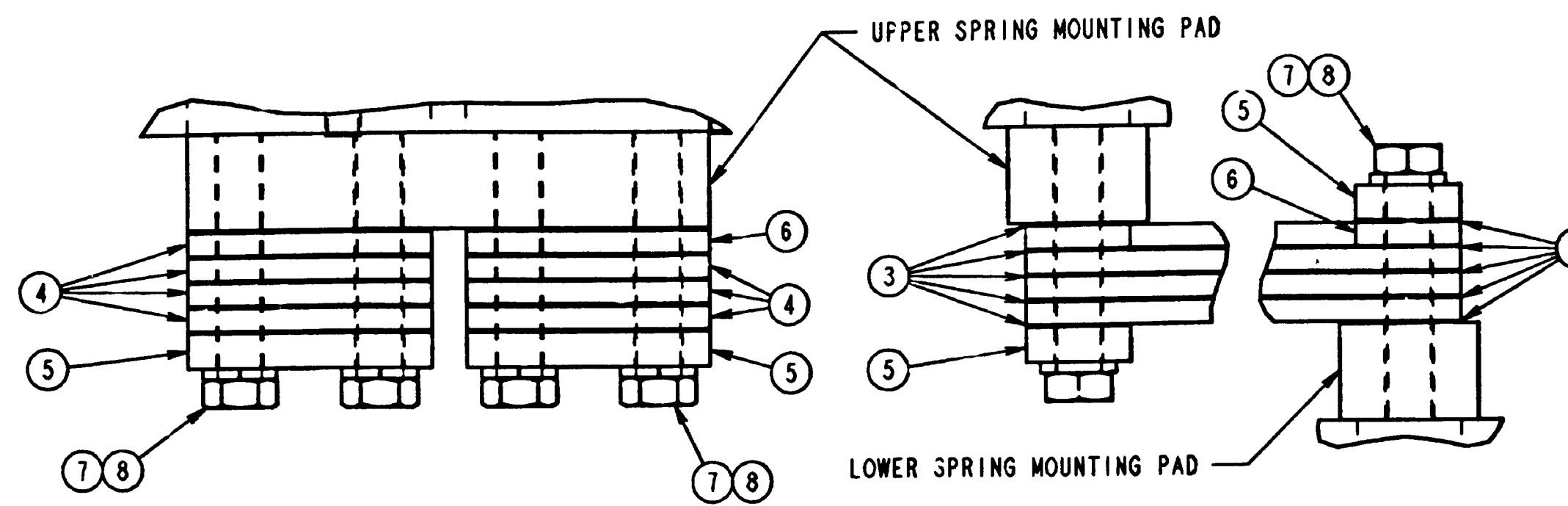
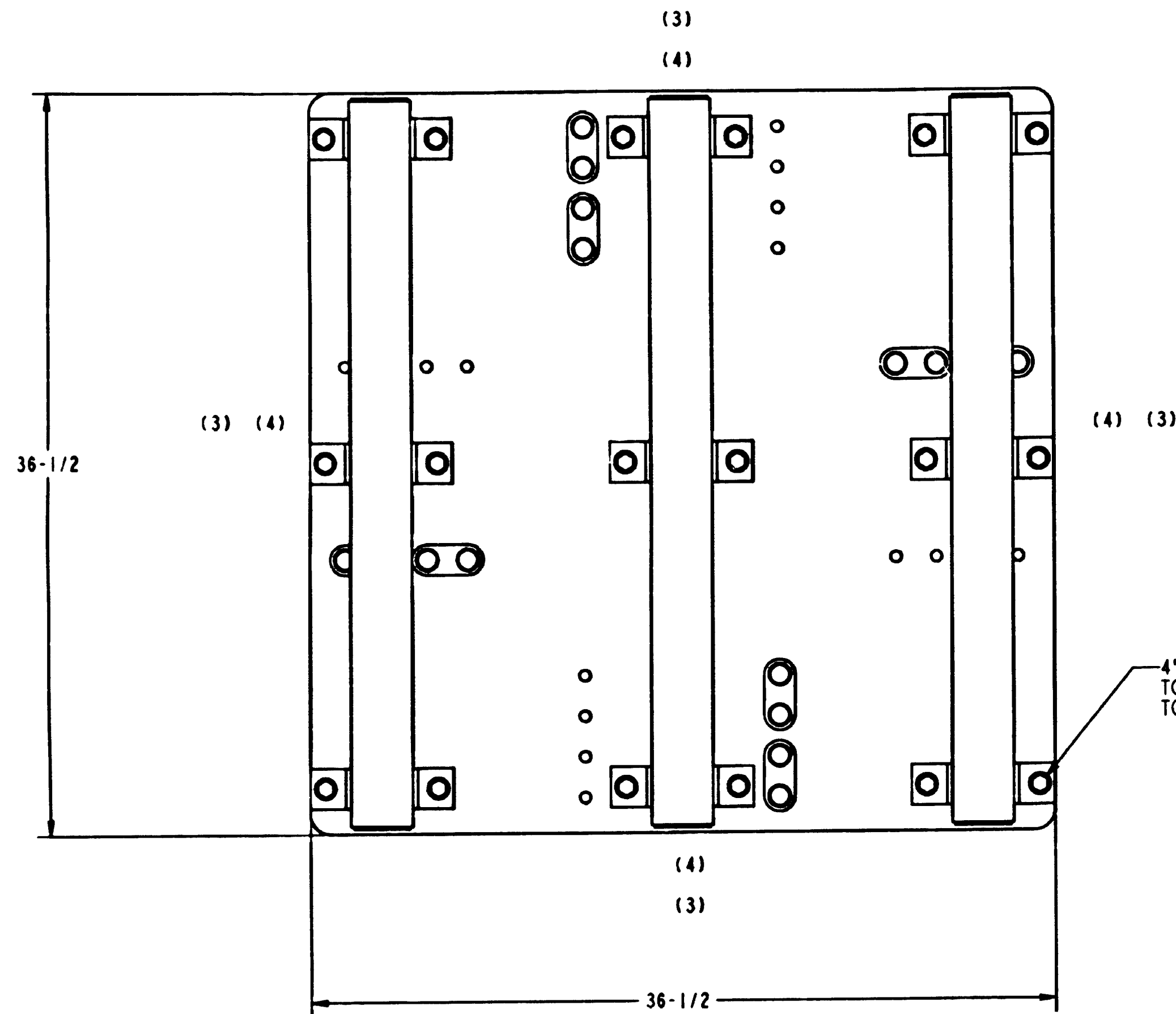
ORDER NUMBER: B63008-001
 CUSTOMER: GENERAL MILLS INC. MINNEAPOLIS MN

TOTE FRAME ASSY WT:	1620#	CAPACITY:	
TOTE CRADLE ASSY WT:	271#	MAX. TOTE CAPACITY	1100#
DENSIIFIER WT:	852#		
VF CONV WT:	514#		
MISC WT:	200#		
TOTAL WT:	3457#		

REV.	ZONE	DESCRIPTION	BY	DATE
		PLIST ADDED ITEMS 49, 50, AND 51	RC	11-3-93
		ADDED NOTES AND PARTS LIST		
		D5 VF WAS 18"W, REVISED VF SUPPORTS	RC	10-28-93

DATE	NAME	TITLE
9-29-93	D. ALSIPPI	GENERAL ARRANGEMENT OF A PORTABLE TOTE FILLER WITH DENSIIFIER AND INFEDD CONVEYOR
9-29-93	D. BAITLEY	
9-29-93	D. GILFY	

SCALE: 1" = 1' 0"



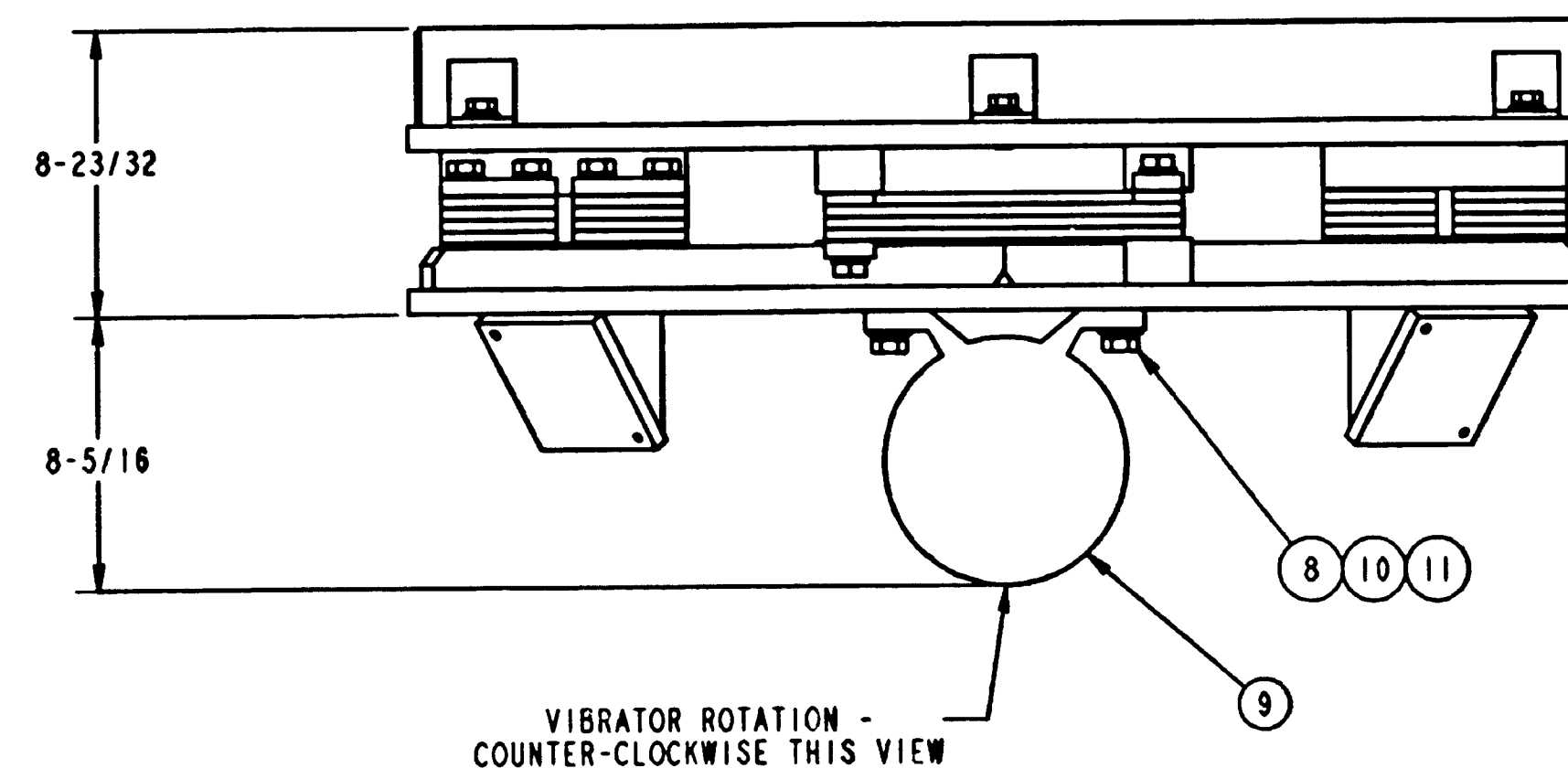
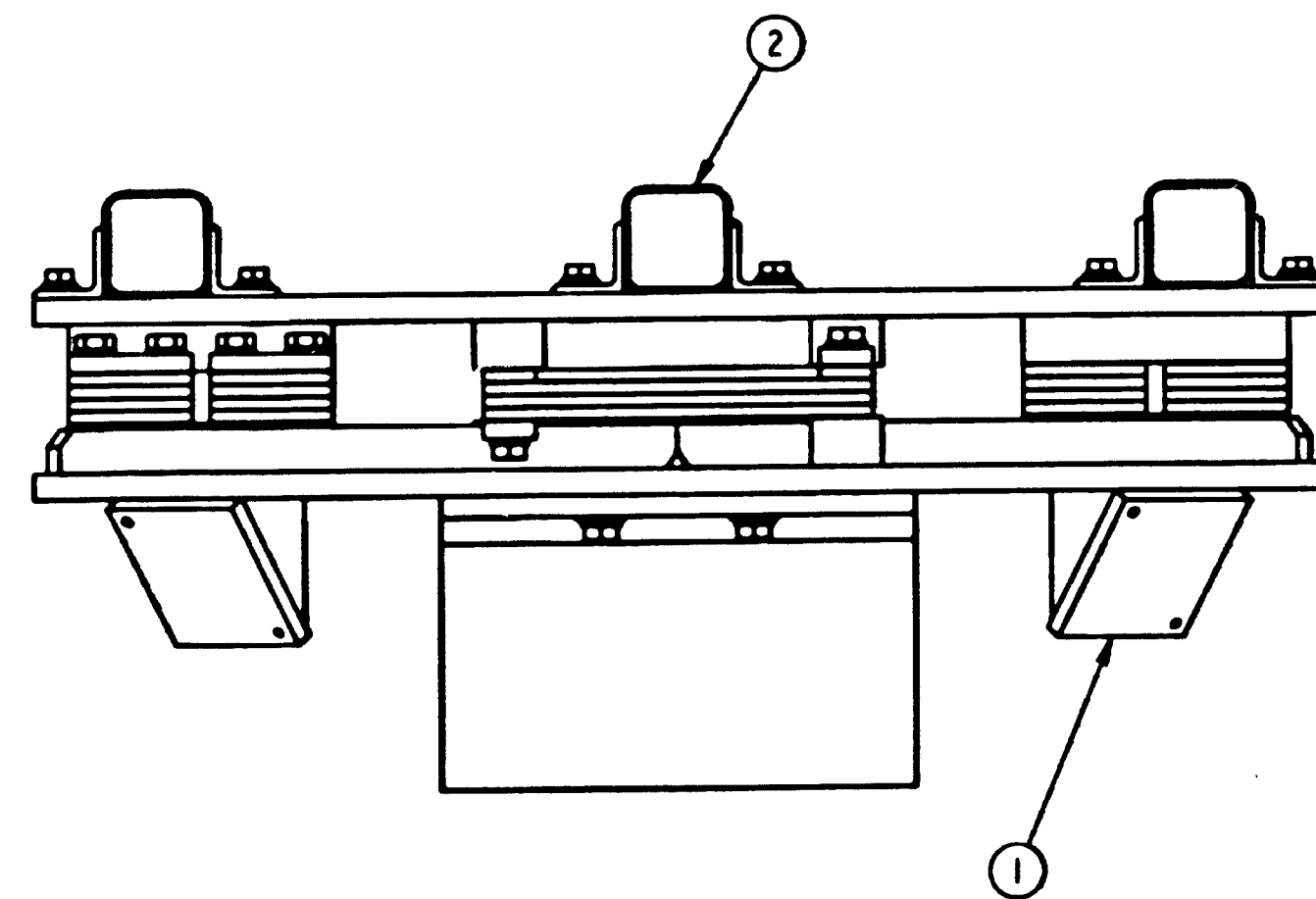
NOTE: INNER RACK OF SPRINGS TO HAVE (4) SPRINGS.
 OUTER RACK TO HAVE ONLY (3) SPRINGS & (1) STEEL SPACER.
 MAKE SURE SPRING RACKS ARE LEVEL - IF SPACERS ARE NOT
 INSTALLED CORRECTLY, SPRING RACK WILL BE SLOPED.
 TORQUE SPRING BOLTS TO 150 FT. LBS

SPRING DETAIL

4" x 4" TOP MEMBERS CONNECTED TO
 TOP PLATE WITH 1/2-13 GR. 5 BOLTS
 TORQUED TO 75 FT-LBS

- INSTALLATION NOTES:
1. MAINTAIN 1" CLEARANCE ALL AROUND DENSIFIER UNIT.
 2. ANY CONNECTIONS TO DENSIFIER UNIT MUST BE FLEXIBLE.

- SHOP NOTES:
1. MAKE SURE THAT TUBE ASSEMBLIES ON TOP OF UPPER MOUNTING PLATE ARE MATCH-MARKED PRIOR TO SPRING INSTALLATION.
 2. NUMBERS WITHIN THIS AREA () INDICATE THE QUANTITY OF SPRINGS REQUIRED AT EACH LOCATION. SPRINGS MUST BE SYMMETRIC ABOUT DENSIFIER CENTERLINES.
 3. SET THE ECCENTRIC WEIGHTS ON BOTH ENDS OF THE VIBRATOR
 @ 50% OF THE MAXIMUM OUTPUT.



TORQUE SPECIFICATIONS

CONNECTION	TORQUE (FT. LBS)
SPRING	150
VIBRATOR	150
TUBE ASS'Y	75

REV.	ZONE	DESCRIPTION	BY	DATE
E4		172 #/IN, ADDED MTG. BOLT NOTE	DA	
B6		CHANGED SPRING RATE TO 921#/IN WAS	DA	07-11-93
D1		UNBALANCE SETTING WAS 57%	RSI	10-13-93

C.A.D. DRAWING

ORDER NUMBER: B63008 LINE 003
 CUSTOMER: GENERAL MILLS - MINNEAPOLIS, MINNESOTA

UPPER MTG PLATE ASSY: 425#
 LOWER MTG PLATE ASSY: 427#
 TOTAL WEIGHT: 852#
 OPER. SPEED: 1200-1800 CPM
 STROKE: 1/8" @ 1800 CPM
 UNBALANCE SETTING: 50%

CAPACITY:
 800# (INCLUDES TOTE,
 PALLET, & PRODUCT)

DATE	NAME
10-12-93	R. SILVASY
10-13-93	D. ALSIPPI
10-13-93	D. ALSIPPI

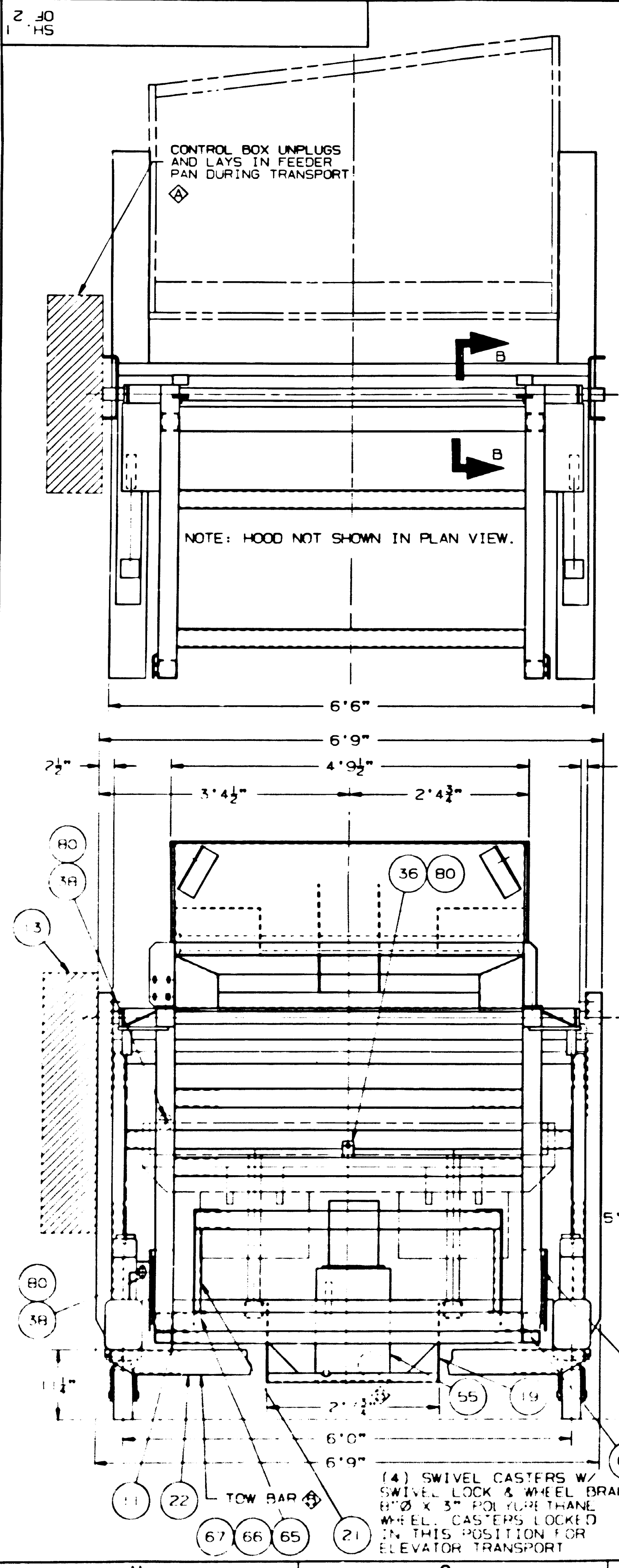
DEFAULT TOLERANCE: FRACTIONAL ±1/32
 DECIMAL ±0.005
 HOLE TO HOLE ±0.010
 HOLE TO DIM ±0.008
 SURFACE FINISH

SCALE
 3/16" = 1"

TITLE
D

REFERENCE B63008D002 FOR MOUNTING OF DENSIFIER ON TOTE FILLER

PARTS LIST					
ITEM	PART NO.	DESCRIPTION	MAT'L	WEIGHT	QTY
1	B63008D261	LOWER MOUNTING PLATE ASSY	MS	327.62	1
2	B63008D260	UPPER MOUNTING PLATE ASSEMBLY		403.09	1
3	B63008A256	SPACER		0.00	80
4	B63008A254	SPRING - 921 #/IN RATE		1.36	28
5	B63008A255	CLAMP BAR	SI018	0.64	16
6	B63008A264	SPRING SPACER - .33 THK	SI018		8
7	H0113909	LOCK WASHER 5/8 DIA	ZN PL		36
8	B63008-817	HH CAP SCR 5/8-11 X 3-1/4 GR. 5	ZN PL	0.40	32
9	B63008-815	ROTARY ELECTRIC VIBRATOR		70.00	1
10	B63008-818	HH CAP SCR 5/8-11 X 1-1/2 GR. 5	ZN PL		4
11	H0117510	PLAIN WASHER 5/8 DIA	ZN PL		4



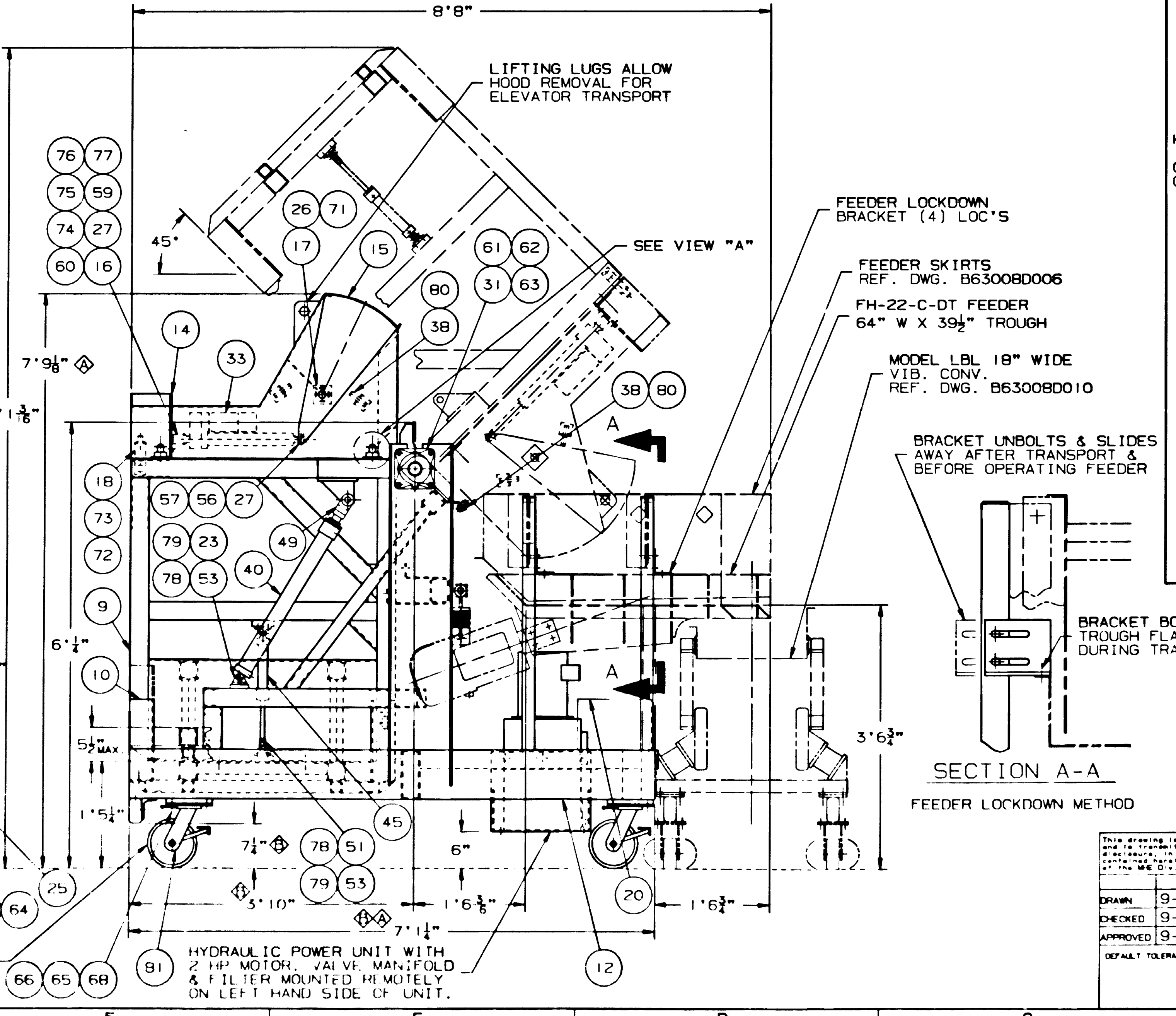
SUPP. STRUCT. WT: 3020*	MAX. TOTE CAP: 1000*
CRADLE WT: 490*	TOTE SIZES: SEE CHART SHT. 2 OF 2
HOOD WT: 320*	
FEEDER WT: 1140*	
TOTAL WT: (EST.) 4970*	

CONSTRUCTION:
 HOOD & GATE ASSY.: TYPE 304 STN. STL.
 CRADLE & SLIDER: MILD STL. PAINTED
 HENTZEN STN. STL. POLYURETHANE.
 SUPPORT STRUCTURE: MILD STL. PAINTED
 HENTZEN STN. STL. POLYURETHANE.

GROUP	ITEM	PART NO	DESCRIPTION	QTY
C HARDW. & GEN'L GROUP (CONT.)	61	H0337824	HH CAPSCR 5/8"-11 X 2-1/4" ZPL	12
	62	H2100217	LOCKNUT ESNA 5/8"-11 ZN PL	8
	63	H0117510	PLAINWASHER 5/8" Ø ZN PL	8
	64	H0113907	LOCKWASHER 5/8" Ø ZN PL	4
	65	H0336324	HH CAPSCR 1/2"-13 X 1-1/4" ZPL	20
	66	H0117310	PLAINWASHER 1/2" Ø ZN PL	20
	67	H2100417	LOCKNUT ESNA 1/2"-13 ZN PL	4
	68	H0315203	HH CAPSCR 1/2"-13 X 1-1/4" S.S.	4
	69	H0113610	LOCKWASHER 1/2" Ø S.S.	4
	70	H0117202	PLAINWASHER USS 1/2" Ø S.S.	4
	71	B58383-845	CUP PT. SC. SCR. 1/4"-20X1/4" S.S.	4
	72	H0300803	HH CAPSCR 1/4"-20 X 1/2" S.S.	2
	73	H0112809	LOCKWASHER 1/4" Ø ZN PL	2
	74	H0307503	HH CAPSCR 5/16"-18 X 1-1/2" S.S.	4
	75	H0102402	HEX NUT 5/16"-18 S.S.	4
	76	H0116804	PLAINWASHER 5/16" Ø S.S.	4
	77	H0113002	LOCKWASHER 5/16" Ø S.S.	4
	78	H0310322	HH CAPSCR 3/8"-16 X 1-1/4" NiPL	24
	79	H0113207	LOCKWASHER 3/8" Ø ZN PL	24
	80	B62929-805	PROX. SW. MTG. BRKT. SPRING RETURN	7
	81	B63008-801	CASTER: 8" X 3" WIDE POLYURETHANE	4

LINE ITEM 008	B63008C008	ELECTRICAL CONTROL ASSY.	1
---------------	------------	--------------------------	---

GROUP	ITEM	PART NO	DESCRIPTION	QTY
A TOTE UNLOAD. ASSY.	1		FDA SPECS. CLASS "A" SAME AS 0394X003 EXC. OMIT WHITE PAINT	1
	3	B63008D005-B	STRUCTURAL COMPONENTS GROUP	1
	4	B63008D005-C	HARDWARE & GENERAL GROUP	1
	9	B63008D350-A	CRADLE ASSY.	1
B STRUCT. COMP. GROUP	10	B63008D354-A	SLIDER ASSY.	1
	11	D735306-B	SLIDER RETAINER ASSY.	1
	12	B63008D355-A	SUPPORT CARRIAGE ASSY.	1
	13	B63008C361-A	CONTROL BOX MTG. ASSY.	1
	14	B63008D352-A	HOOD ASSY.	1
	15	D735305-A	GATE PLATE ASSY.	1
	16	D735305-C	CYLINDER MTG. BRKT.	1
	17	D735305-027	GATE SHAFT	1
	18	D735306-018	SENSOR MTG. BRKT. UPPER	1
	19	B63008C360-A	HYD. POWER UNIT MOUNTING BRKT.	1
	20	B63008C366-A	HYDRAULIC VALVE GUARD ASSY.	1
	21	B63008D354-B	TOTE SPACER ASSY.	1
	22	B63008B357-A	TOW BAR ASSY.	1
	23	B63008A481	EYE BRACKET MOUNTING PAD	1
	24	B63008D363-D	HYDRAULIC MOUNTING PLATE ASSY'S	1
	25	D735306-017	UHMW SLIDE STRIP	8
	26	D735305-029	DELRI BUSHING (GATE SHAFT)	2
	27	D735305-028	DELRI SPACER (LINEAR ACT.)	4
	28	D735308-A	NAMEPLATE & LABELS	1
	29	B63008D362-A	HYDRAULIC HOSE ASSY.	1
	30	D735304-009	LOAD SPACER BUSHING	4
31	B58383-812	DODGE SCM 4-BOLT FLANGE BRG. 2" Ø SHAFT, 2 SET SC. P/N# 126192	2	
C HARDW. & GEN'L GROUP	33	B59679-806	AC LINEAR ACTUATOR: 8" STROKE 115V, 500* LOAD CAPACITY, WARNER ELECTRAK 5, MODEL# A12-0585-0BD	1
	36	B58383-815	PROX. SWITCH: CAPACITIVE 18mm Ø EFFECTOR INC. P/N# KG-2008-ABOA	1
	38	B58383-814	PROX. SWITCH: INDUCTIVE 18mm Ø EFFECTOR INC. P/N# IG-2005-ABOA	6
	40	B63008-803	HYDRAUL. CYL. 2-1/2" BORE, CLEVIS MOUNT, 22" STROKE, 1-3/8" ROD Ø STYLE 2 ROD END, CUSH. BOTH ENDS SPECIAL 1-1/4" LG. ROD END CUSH. LYNAIR MODEL# SLL-2B42-24-1P1	2
	45	B62929-802	HYDRAUL. CYL. 1-1/2" BORE, CLEVIS MOUNT, 6" STROKE, 5/8" ROD Ø NO CUSHIONS, STYLE 2 ROD END LYNAIR MODEL# LL-1B42-6-P2	2
	49	B58383-803	ROD CLEVIS W/PIN & RETAINERS FOR 2 1/2" CYL. LYNAIR P/N# RC-1310	2
	51	B58383-805	ROD CLEVIS W/PIN & RETAINERS FOR 1 1/2" CYL. LYNAIR P/N# RC-0604	2
	53	B58383-804	EYE BRACKET W/PIN & RETAINERS 1 1/2" & 2 1/2" CYL. LYNAIR P/N# MB-0507	6
	55	B63008-802	HYDRAULIC POWER UNIT (VICKERS)	1
	56	B58383-846	HH CAPSCR. 1/2"-13 X 3" S.S.	2
	57	H2100418	LOCKNUT ESNA 1/2"-13 S.S.	2
	58	H0113607	LOCKWASHER 1/2" Ø HVY SPR. ZN PL	16



REV.	ZONE	DESCRIPTION	BY	DATE
P-L		ADD. P/N IT. 29, ADDED IT. 24	AB	10-28-93
E-1		DIM 7'1-1/4" WAS 6'11-1/2"	AB	10-5-93
F-1		DIM 3'10" WAS 3'8-1/4"		
E-6		SPACER HT. WAS 17-1/2"		
F-5		ADDED TOW BAR, ADD ELECT. REF.		
F-3		DIM 11'1-3/16" WAS 11'1-7/8"		
E-6		SPACER WAS FURNISHED BY GMI	AB	9-23-93
F-3		ADDED DIM. 7'9-1/8"		
H-6		REVISED TOTE CONTROL BOX		
E-1		DIM 6'11-1/2" WAS 7'2"		

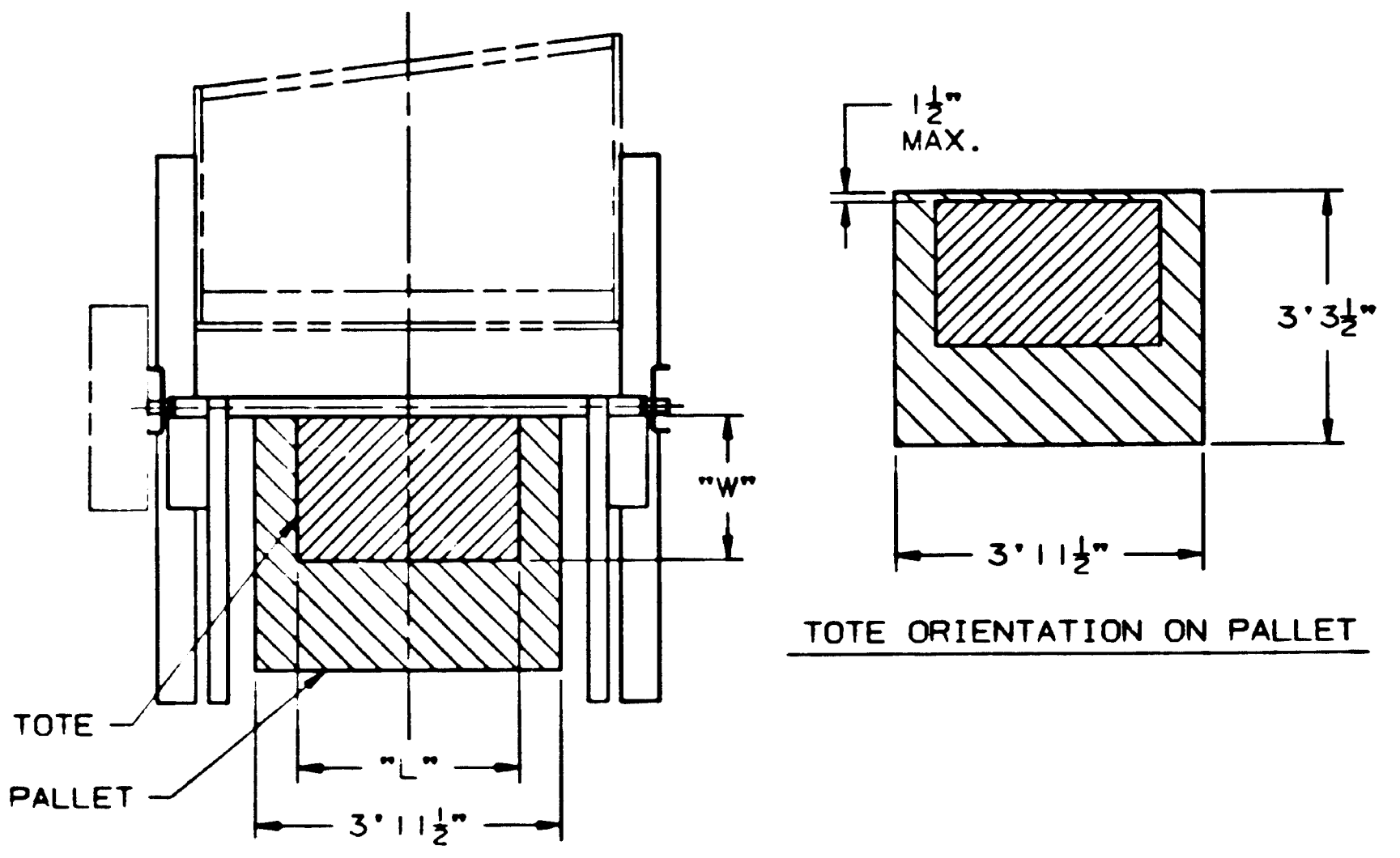
REVISIONS CONTINUED SHEET 2 OF 2

THIS DRAWING IS THE PROPERTY OF THE UMC DIV. OF FMC CORPORATION and is loaned to you for your use only. It is not to be reproduced, stored in a retrieval system, or transmitted in any form or by any means, electronic, mechanical, photocopying, recording, or by any information storage and retrieval system, without the prior written permission of the UMC Div. of FMC Corporation.

DATE	NAME
9-18-93	AL BAUM
9-20-93	D. BAILEY
9-20-93	D. BAILEY

SCALE: 1" = 1'0"

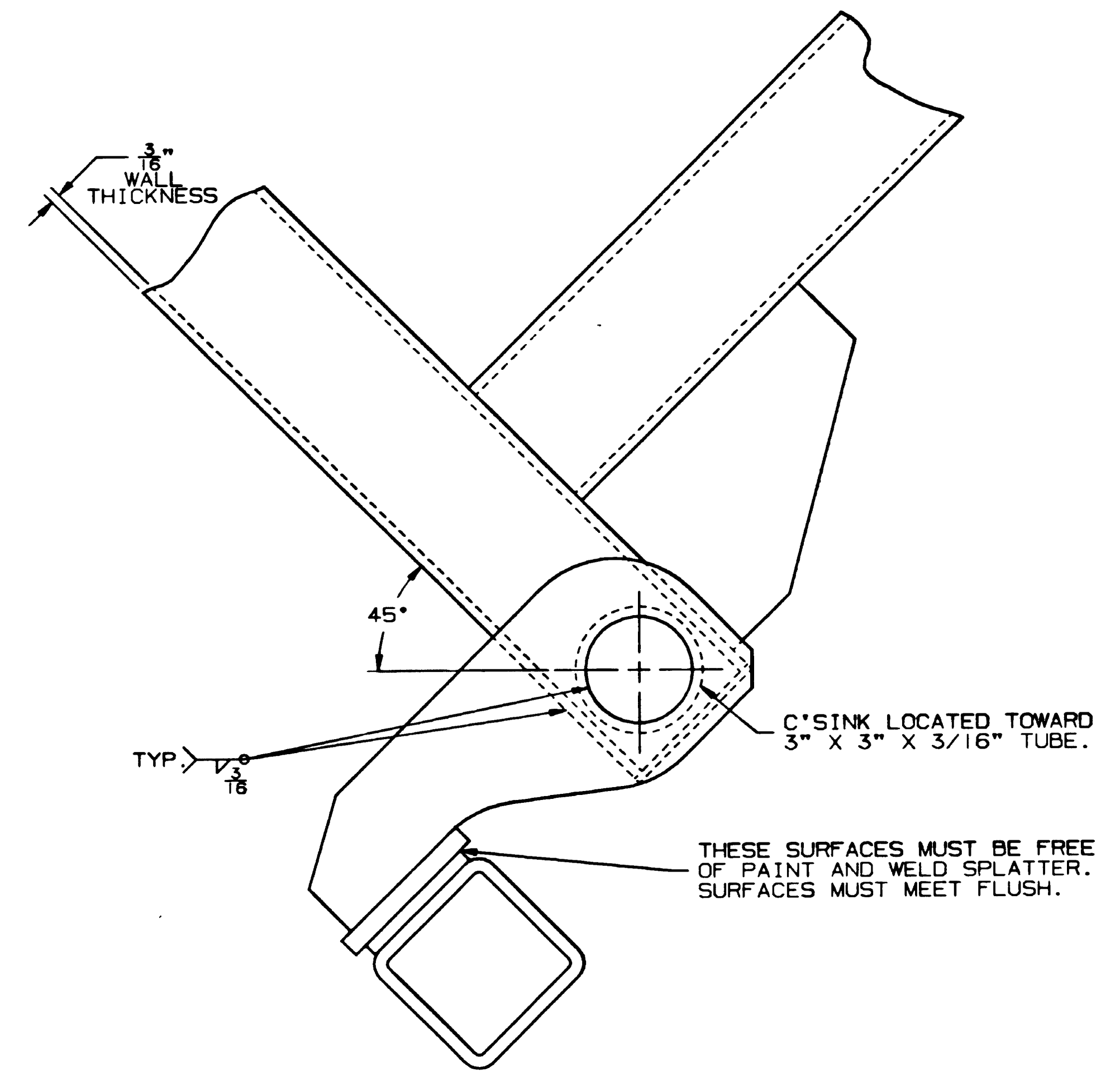
TITLE: GENERAL ARRANGEMENT OF ADJUSTABLE TOTE UNLOADER MOBILE UNIT W/HYDRAULICS LEFT HAND UNIT



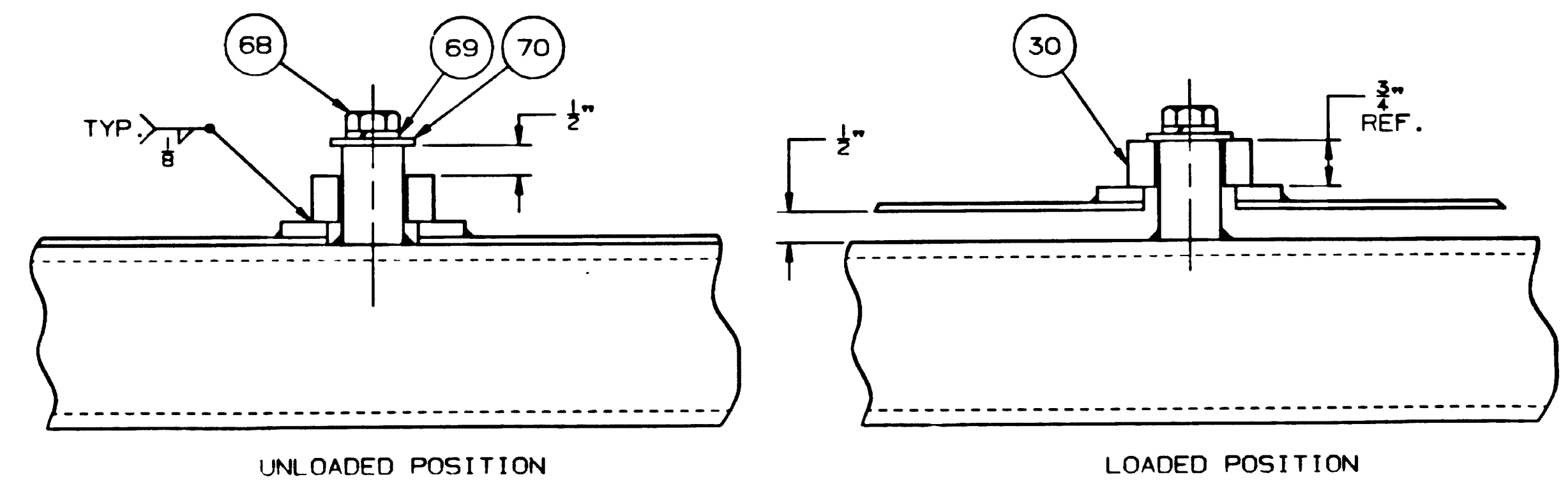
TOTE LOADING ORIENTATION
SEE TOTE SIZE CHART

TOTE SIZE CHART			
NO.	"L"	"W"	"H"
1	34 1/2"	34 1/2"	48 1/2"
	36"	36"	48 1/2"
3	45"	36"	48 1/2"
4	47"	38"	50 1/2"
5	48"	48"	48"
6	35"	35"	47 1/2"
7	38 1/8"	22 1/8"	34 1/2"
8	38"	23"	31"

NOTE: TOTE SIZES 7 & 8 TO BE USED WITH TOTE SPACER (ITEM 21).
 TOTE SPACER (ITEM 21) MUST BE USED IN COMBINATION WITH PALLET.
 PALLET (5" HIGH) MUST ALWAYS BE USED.
 TOTE WALL THICKNESS IS ASSUMED 1/2".
 SPACER SIZE: 49 1/2"L X 37"W X 16 1/2"H



SECTION B-B
STOP BRACKET WELDMENT
HALF SCALE
SEE NOTE 1



VIEW A
CAP TRAVEL ADJUSTMENT
HALF SCALE

SHOP NOTES:

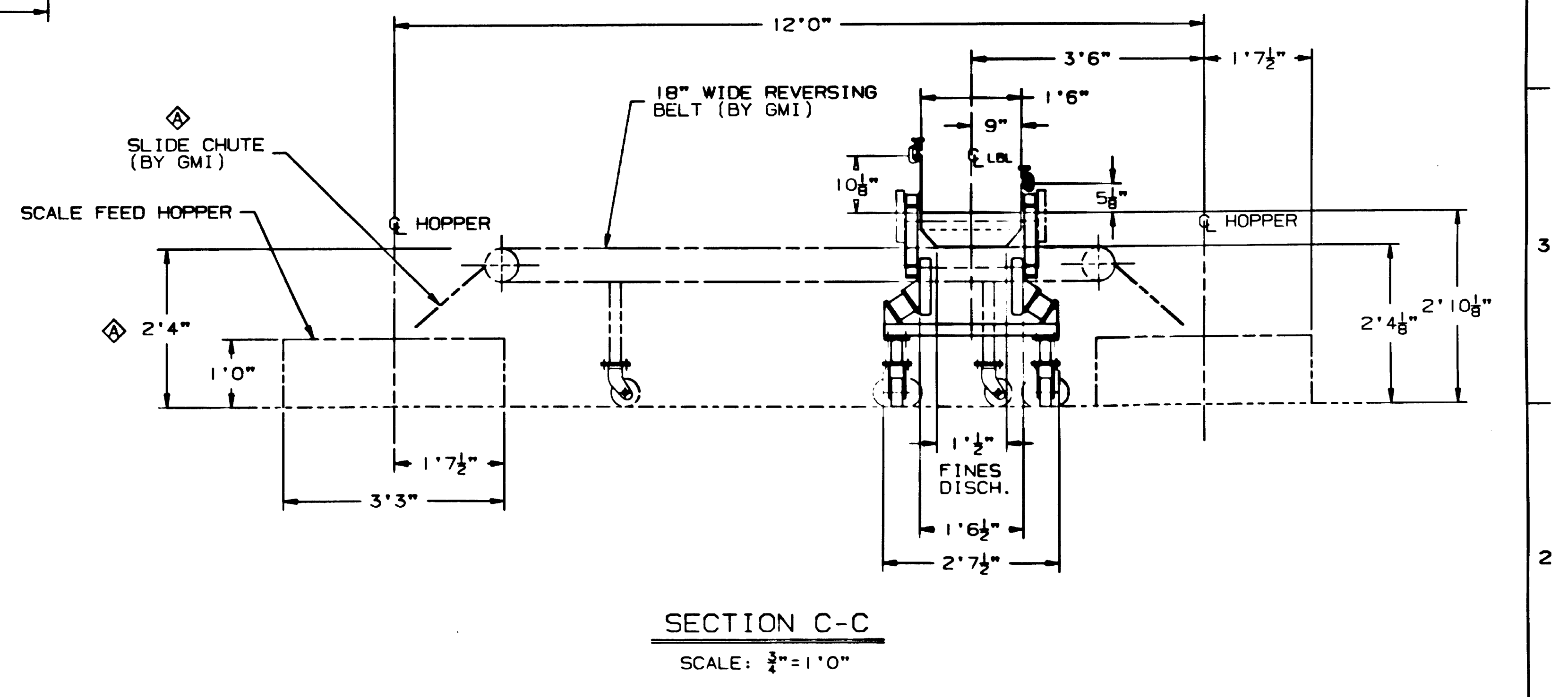
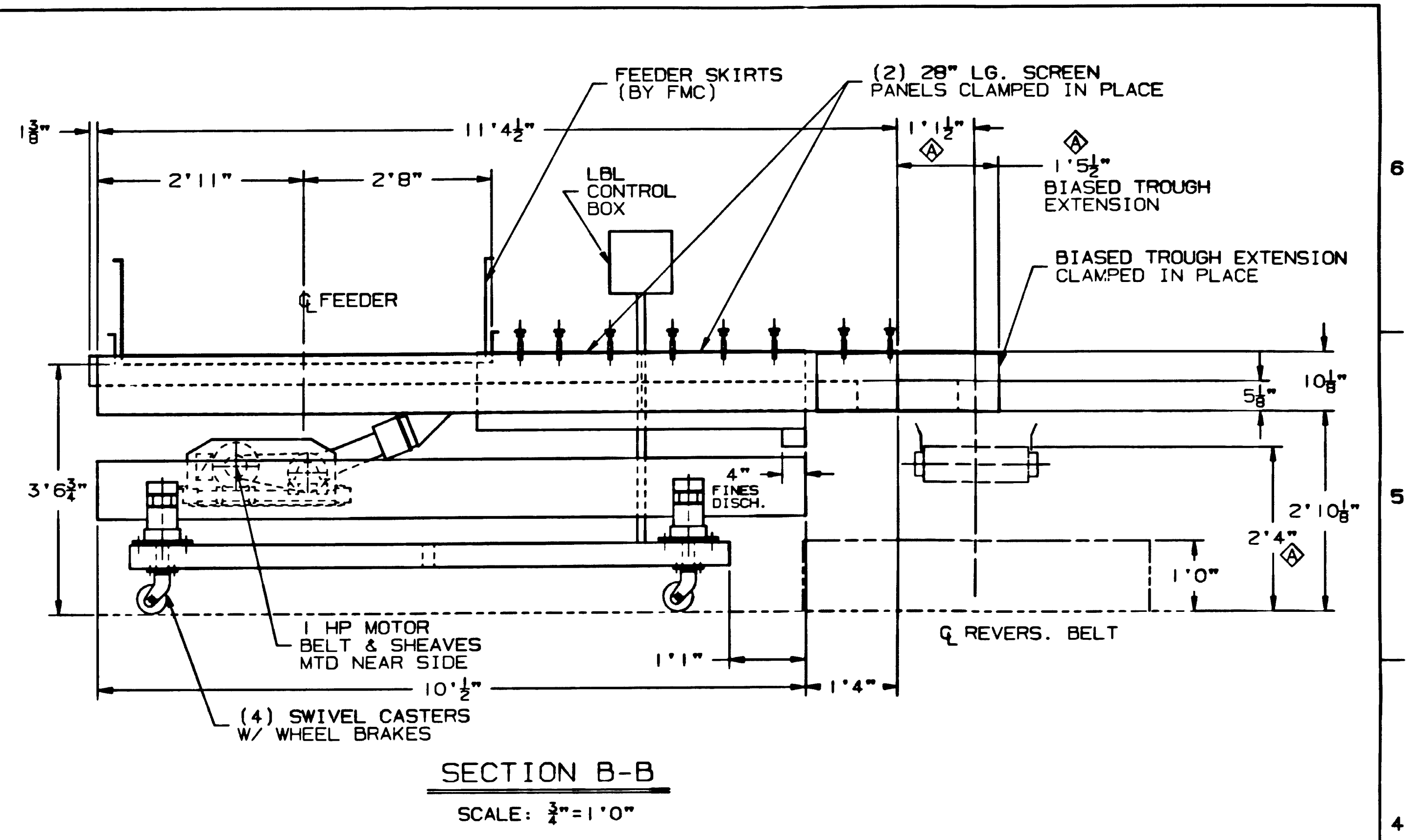
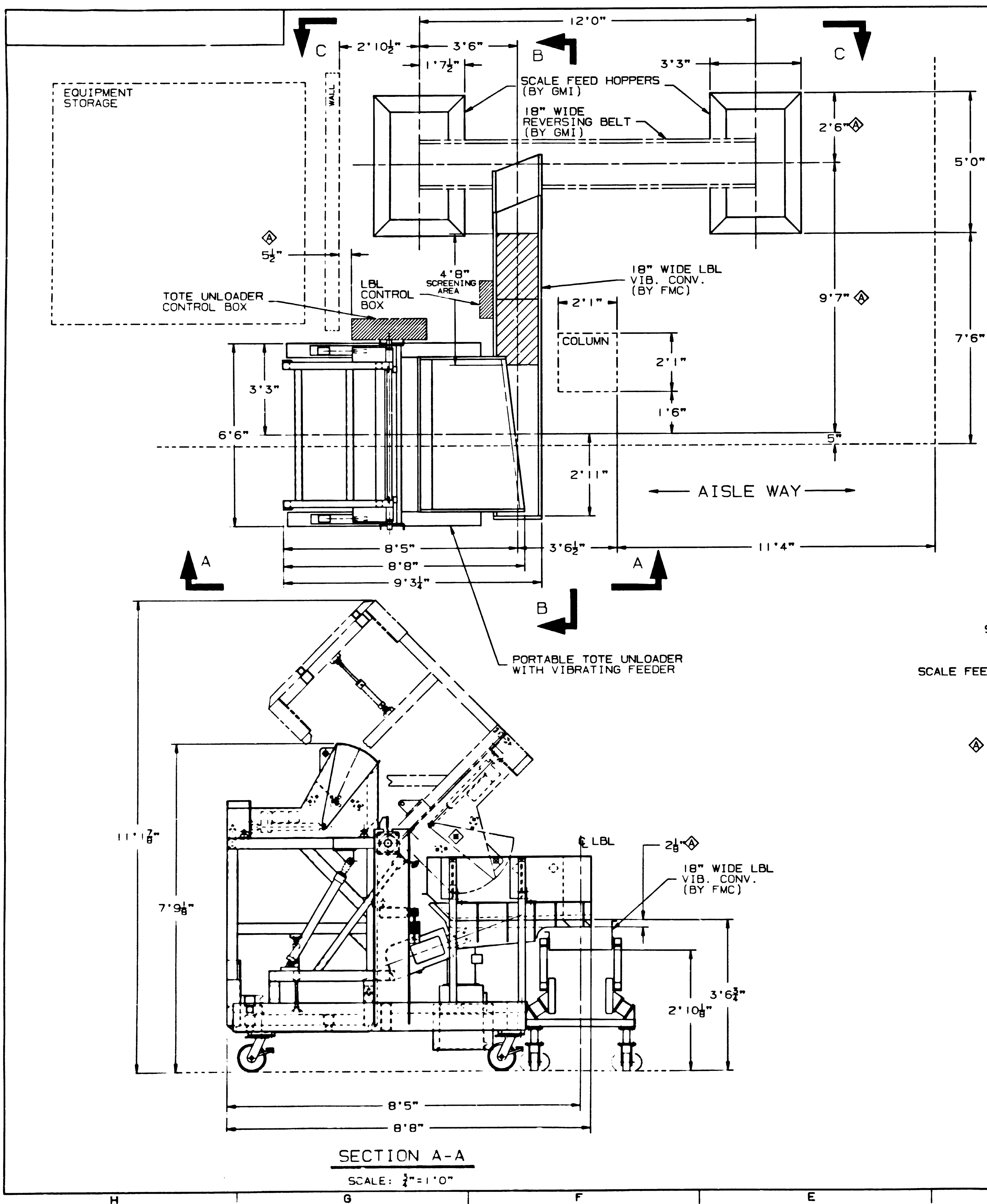
- STRIP AREAS AROUND STOP BRACKETS AND PREPARE FOR WELDING. BE SURE TO STRIP THE TWO CONTACT SURFACES OF PAINT AND WELD SPLATTER. ROTATE CRADLE MANUALLY TO A POSITION OF 45° FROM THE HORIZONTAL. CHECK ANGLE USING INCLINOMETER OR ANGLE METER. WITH CONTACT SURFACES FLUSH AND SQUARE, TACK WELD STOP BRACKETS IN PLACE. ROTATE CRADLE TO HOME POSITION AND FINISH WELD PER SECTION B-B. REPAINT AREA.
- ROTATE CRADLE TO DUMP POSITION, RESTING ON WELDED STOPS (NOTE 1). INSTALL ROD CLEVIS (ITEM 49) ONTO CYLINDERS (ITEM 40), TIGHTEN FULLY. INSTALL EYE BRACKET (ITEM 53) ONTO CYLINDERS. BOLT TAP BLOCK (FURNISHED LOOSE WITH SUPPORT STRUCTURE) TO EYE BRACKET. EXTEND CYLINDER ROD FULLY, THEN RETRACT 1/4". WRAP ROD WITH TAPE TO MARK THIS POSITION. ATTACH ROD CLEVIS TO TOP PIVOT POINT. EXTEND CYLINDER ROD AND ROTATE DOWN UNTIL TAP BLOCK RESTS ON SUPPORT CARRIAGE. MAKE SURE CYLINDER IS PERPENDICULAR IN ALL PLANES. CLAMP THE TAP BLOCK TO SUPPORT STRUCTURE AND ROTATE CRADLE TO HOME POSITION, CHECKING THAT CYLINDER REMAINS STRAIGHT THROUGHOUT THE TRAVEL. CONTACT ENGINEERING BEFORE WELDING TAP BLOCK TO SUPPORT TUBE WITH A 3/16" FILLET WELD ALL AROUND.
- INSURE THAT SLIDER (ITEM 10) IS DOWN FLUSH AGAINST THE SLIDER RETAINER FRAME (ITEM 11). INSTALL ITEMS 51 & 53 ONTO CYLINDERS (ITEM 45). TIGHTEN ROD CLEVIS FULLY ON CYLINDER ROD. FASTEN LOWER MOUNTING BLOCK TO PIVOT BRACKET. ADJUST ROD CLEVIS SO THAT ENTIRE CYLINDER ASSY. FITS INTO PLACE. MAKE SURE THAT THE CYLINDER IS PERPENDICULAR TO CRADLE AND SLIDER IN ALL PLANES, THEN WELD LOWER MOUNTING BLOCK WITH A 3/16" FILLET WELD ALL AROUND.
- WITH CRADLE IN UPRIGHT POSITION, PLACE HOOD OVERTOP THE (4) 1"Ø PINS SO INSIDE TUBE SURFACES OF THE CRADLE ARE FLUSH WITH THE INSIDE OF THE HOOD WALLS IN ALL THREE PLACES. CENTER ITEM 30 OVER THE PINS (SEE VIEW A) AND WELD AS SHOWN. INSTALL ITEMS 68, 69, & 70 AS SHOWN.
- USE ANTI-SIEZE COMPOUND ON ALL STAINLESS STEEL FASTENERS. DO NOT USE POWER TOOLS ON STAINLESS FASTENERS. PREVENT GALLING.
- UNIT TO BE TESTED WITH HYDRAULIC INDUSTRIAL OIL, CITGO A/W46. FILTER OIL BEFORE OPERATING UNIT. FILL UNIT TO SPECIFIED LEVEL. NOTIFY MAINTENANCE OF OIL REQUIREMENTS 2 DAYS PRIOR TO TESTING. DRAIN UNIT AFTER TESTING AND RETURN OIL TO MAINTENANCE. HYDRAULIC UNIT MUST BE SHIPPED WITHOUT OIL AND LABELED.
 HYDRAULIC UNIT SHIPPED W/O OIL. FILL UNIT BEFORE OPERATING.

REV.	ZONE	DESCRIPTION	BY	DATE
1		IT. 45 P/N WAS B58383-802	AB	12-14-93
		IT. 40 P/N WAS B58383-807		
		ADDED ITEM 20		
		ADDED ITEM 23	AB	11-6-93
		ADDED SHEET 2	AB	11-1-93

C. A. D. DRAWING

DATE	NAME
11-1-93	AL BAUM
11-1-93	D. BAILEY
11-1-93	D. BAILEY

<p>Processing and Material Handling Division Material Handling Equipment Operation Homer City, Pennsylvania 15748 Syntrol, Link-Belt & Asesco Products</p>	<p>TITLE GENERAL ARRANGEMENT OF ADJUSTABLE TOTE UNLOADER MOBILE UNIT W/HYDRAULICS LEFT HAND UNIT</p>
---	--



REV.	ZONE	DESCRIPTION	BY	DATE
1		GENERAL REVISION	AB	10-28-93

C. A. D. DRAWING

This drawing is the property of the M&E Div. of FMC Corporation and is transmitted in confidence. The reproduction, use or disclosure, in whole or in part, of the design or details contained herein is prohibited without the written permission of the M&E Div. of FMC Corporation.

DATE	NAME
DRAWN 9-22-93	AL BAUM
CHECKED 9-23-93	D. BAILEY
APPROVED 9-23-93	D. BAILEY

DEFAULT TOLERANCE: FRACTIONAL: ±1/32 DECIMAL: ±0.005 HUNDRS/TWENTHS: ±0.004 SURFACE FINISH: ✓

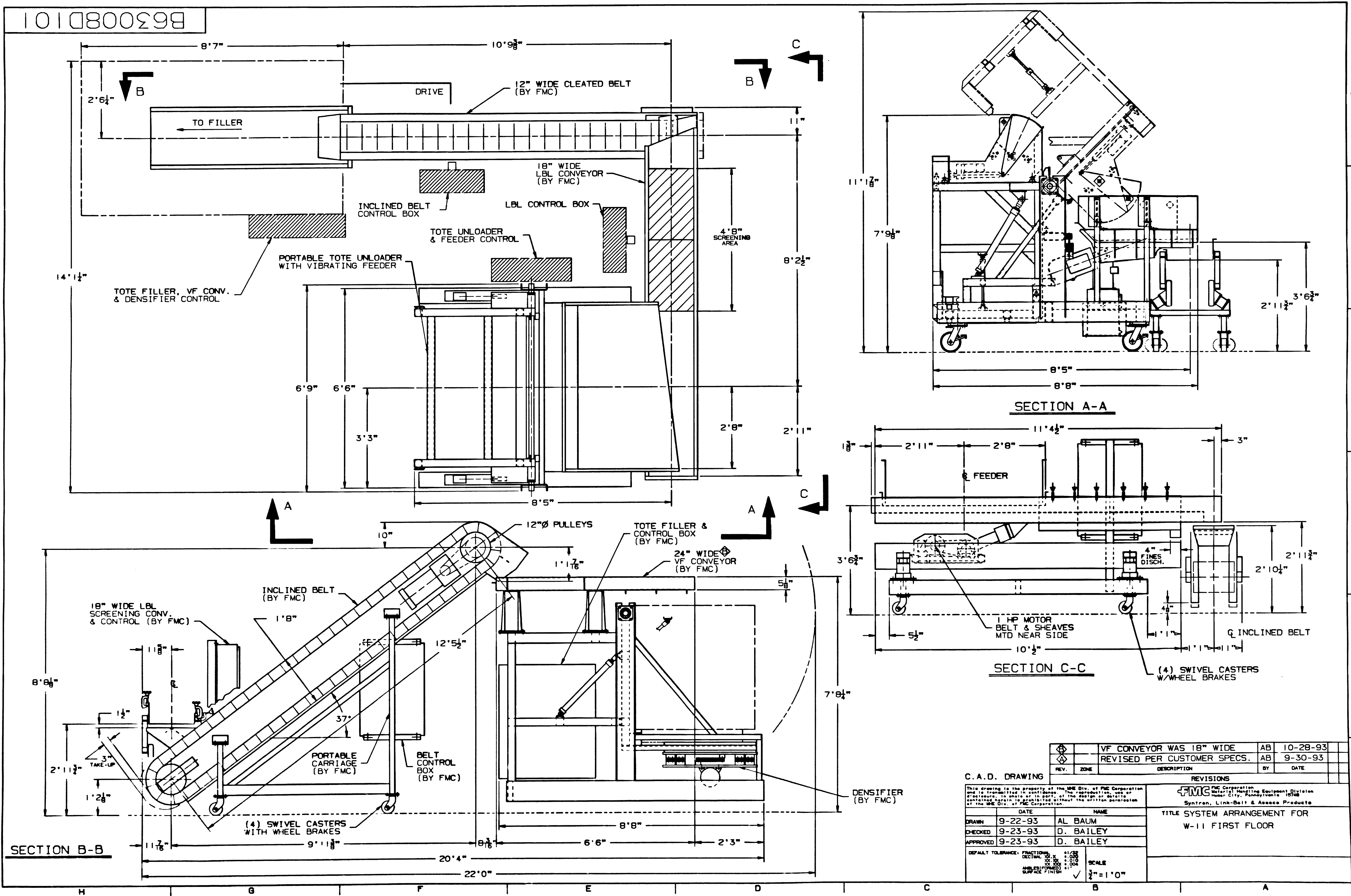
SCALE: 1/4" = 1' 0" OR AS NOTED

REVISIONS	
GENERAL REVISION	AB 10-28-93

FMC Corporation
Material Handling Equipment Division
Homer City, Pennsylvania 15748
Syntron, Link-Belt & Asesco Products

TITLE SYSTEM ARRANGEMENT FOR W-11 PACKAGING LINES

B63008D101



REV.	ZONE	DESCRIPTION	BY	DATE
		VF CONVEYOR WAS 18" WIDE	AB	10-28-93
		REVISED PER CUSTOMER SPECS.	AB	9-30-93

C.A.D. DRAWING

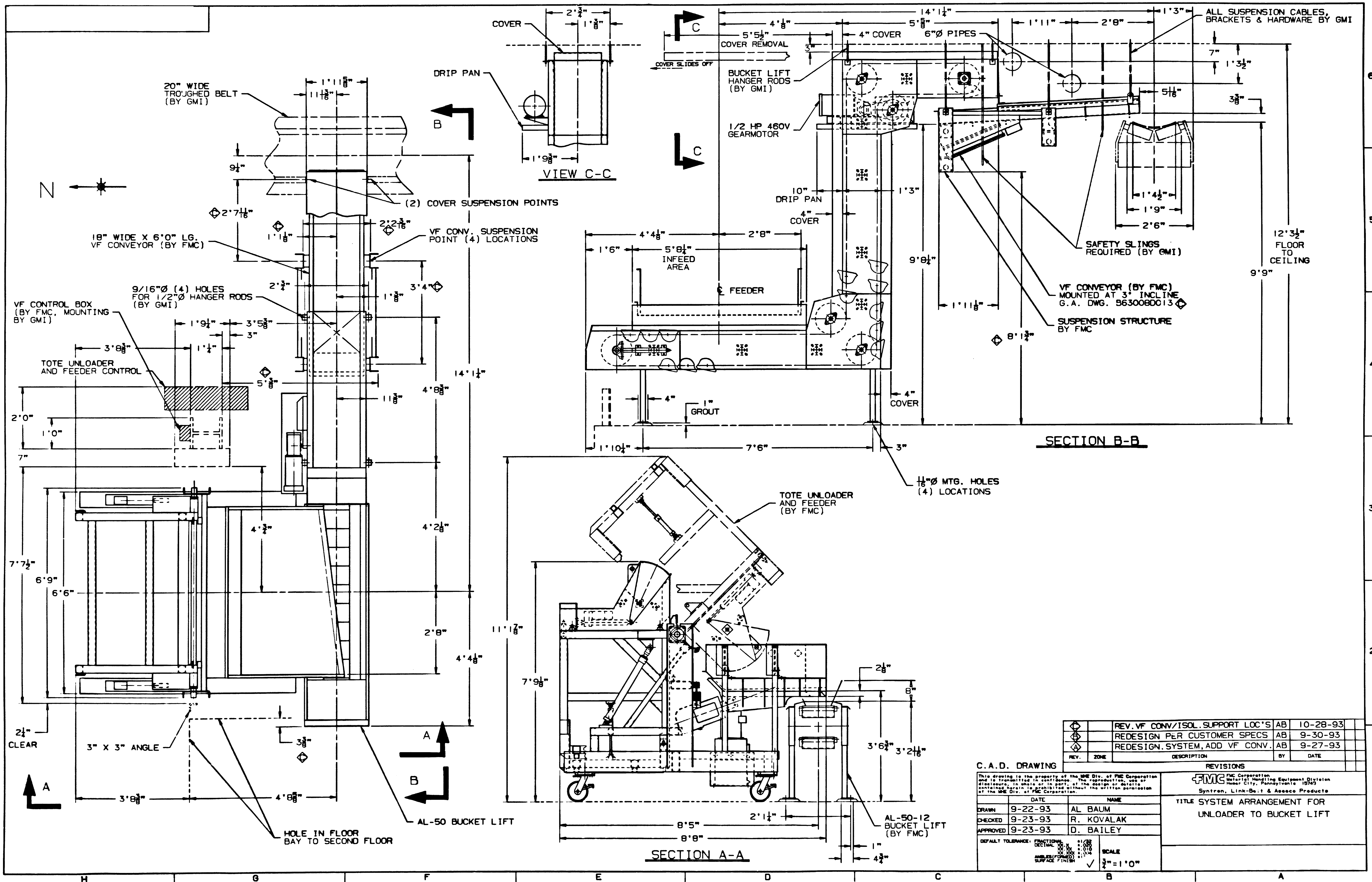
DATE	NAME
9-22-93	AL BAUM
9-23-93	D. BAILEY
9-23-93	D. BAILEY

DRAWN: 9-22-93 AL BAUM
 CHECKED: 9-23-93 D. BAILEY
 APPROVED: 9-23-93 D. BAILEY

FMC Corporation
 Material Handling Equipment Division
 16748
 Syntren, Link-Belt & Assoc Products

TITLE SYSTEM ARRANGEMENT FOR W-11 FIRST FLOOR

DEFAULT TOLERANCE: FRACTIONAL: 1/32
 DECIMAL: 0.005
 ANGLE (FORMED): 1/2
 SURFACE FINISH: ✓
 SCALE: 3/4" = 1'-0"



REV.	ZONE	DESCRIPTION	BY	DATE
1		REV. VF CONV/ISOL. SUPPORT LOC'S	AB	10-28-93
2		REDESIGN PER CUSTOMER SPECS	AB	9-30-93
3		REDESIGN SYSTEM, ADD VF CONV.	AB	9-27-93

C. A. D. DRAWING

This drawing is the property of the IME Div. of FMC Corporation and is transmitted in confidence. The reproduction, use or disclosure, in whole or in part, of the design or details contained herein is prohibited without the written permission of the IME Div. of FMC Corporation.

DATE	NAME
9-22-93	AL BAUM
9-23-93	R. KOVALAK
9-23-93	D. BAILEY

DEFAULT TOLERANCE: FRACTIONAL 1/32 DECIMAL 0.005 ANGLES/FORMED 0.014 SURFACE FINISH

SCALE: 3/4" = 1'-0"

FMC Corporation
 Detail of Handling Equipment Division
 Hazlet City, Pennsylvania 16743
 Syntron, Link-Belt & Asesco Products

TITLE SYSTEM ARRANGEMENT FOR UNLOADER TO BUCKET LIFT