

**ITT Bell & Gossett Heat Exchanger System – 13.75 Sq. Ft.**

**Mfg: ITT Bell & Gossett**

**Model: BP 412- 60**

**Stock No: SGMN194.2**

**Serial No:**

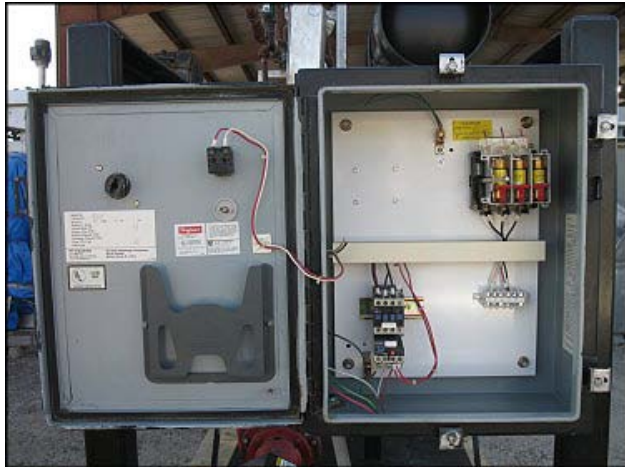
ITT Bell & Gossett Heat Exchanger System. Model: BP 412-60. (60) Total heat exchanger plates. Plate Overall dimensions: 4-3/8 in. W x 1 ft. 1/4 in. H. Heat transfer surface area per plate: 3 in. W x 11 in. H. Total heat transfer: 13.75 sq. ft. Max W.P. 435 PSI. Max Temp. 437 °F. (1) ITT Bell & Gossett centrifugal pump. Model: 1-1/4AC 5BF. S/N: 2176784. Pump specs: 30 GPM, 3/4 hp, 1800 rpm, 175 PSI. General Electric motor for pump: 3/4 hp, 1725/1425 rpm, 208-230/460 v, 2.5/1.25 a, 50/60 Hz, 3 phase. (1) ITT Industries shut on/off box: model: HTP1-45. 230v, 3.2 a, 60 Hz, 3 phase, Brunner Eng. & MFG. Inc. separator tank dimensions: 2 ft. 2-1/2 in. straight wall x 1 ft. dia. (14-1/2 gallons). 150 psi at 650 °F. Inlets/outlets: (2) 1 in. pipe ports, (1) 1-1/2 in. pipe port, (1) 2 in. MNPT, (1) 1/2 in. FNPT. Overall dimensions: 8 ft. 8 in. L x 3 ft. W x 7 ft. 8 in. H.











Model No.	HTP1-45		
Factory NO.	092731		
Wired for	230 Volts	60 Hz	3 Ph
System FL Amps			3.2
Largest Motor HP			3/4
System Flow GPM			30
Suction Pressure PSIG			
Discharge Pressure PSIG			
Pump TDH Feet			25
Date Code			F99

**ITT Industries**  
 AUTOMOTIVE  
 DEFENSE & ELECTRONICS  
 FLUID TECHNOLOGY

**ITT Fluid Technology Corporation**  
 Bell & Gossett  
 Morton Grove, IL, U.S.A.

S11929





