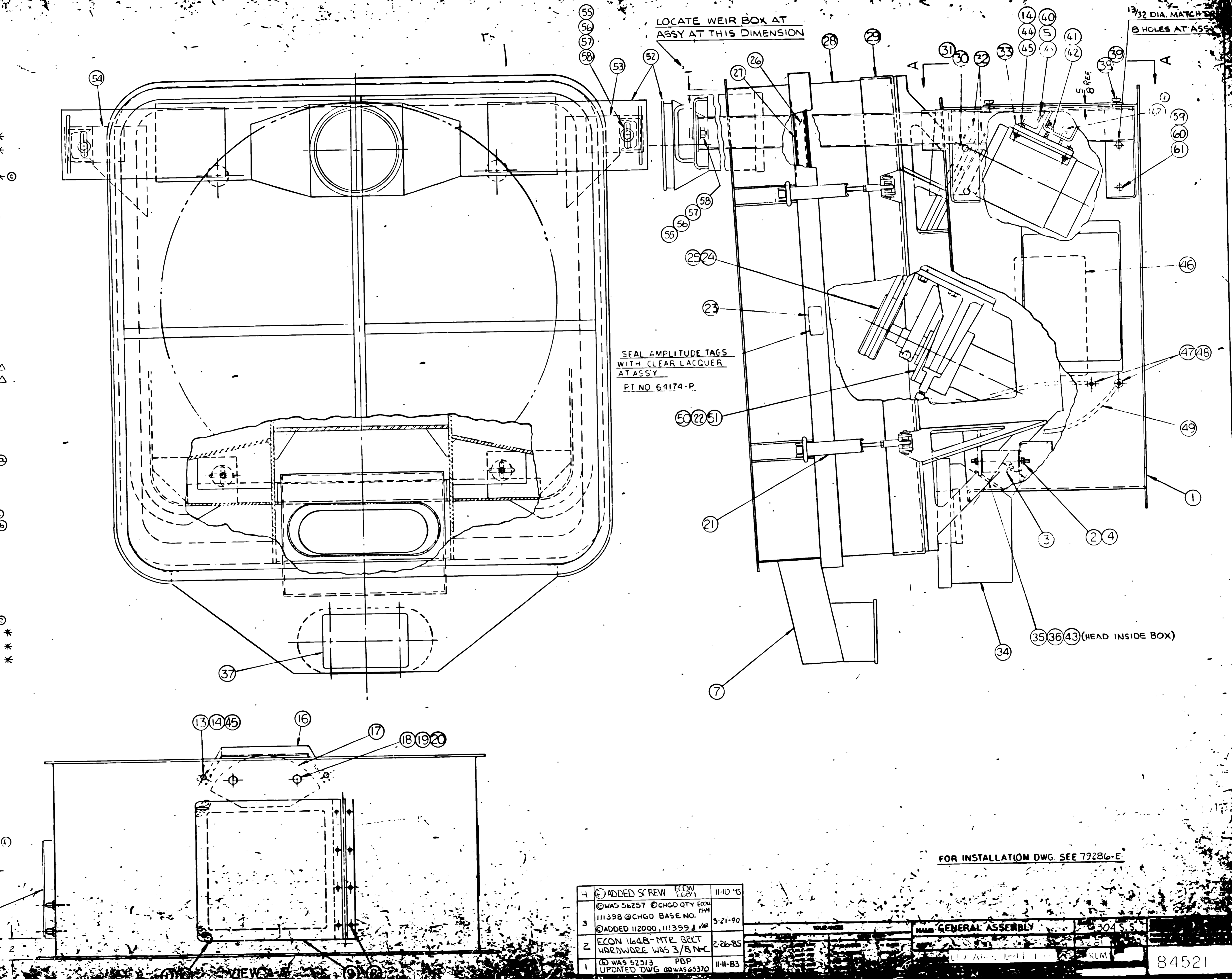


QTY	DESCRIPTION	PART NO
1	BASE ASSEMBLY	65362-E
2	5/16-18NC HEX NUT - 304SS	26873-P
3	RUBBER SPRING MOUNTS	65756-B
4	5/16 FLAT WASHER - 304SS	26962-P
5	1/2 FLAT WASHER	2307-P
6	1/2 NC LOCK NUT	71523-P
7	TOP COVER (304SS)	82990-E
8	POP RIVET 3/16 DIA USMCO #50-E6-B5	51860-P
9	ACCESS DOOR ASSEMBLY	52311-C
10	RECEPTACLE "SOUTHCO" RS-35-295-15	52315-P
11	POP RIVET 1/8 ALUM USMCO #AD45 ABS	52314-P
12	MANUAL HOILER	112000-E
13	5/16-NC HEX HD CAPSCR - 5/8 LG	91432-P
14	5/16 FLAT WASHER	12291-P
15	CAUTION PLATE	111398-L
16	BELT GUARD - MOTOR	59218-C
17	SECONDARY TOP WEIGHT	43762-B
18	1/2-20NF HEX HD CAPSCR - 2 LG	3961-P
19	1/2 FLAT WASHER	2307-P
20	1/2-20NF SELF LOCKING NUT	50956-P
21	CLAMP HANDLE ASSY PER 76551-C	76630-T
22	DRIVE HEAD ASSY	46635-E
23	AMPLITUDE TAG	52825-B
24	SHEAVE "DAYCO" #2BQ40	32367-P
25	BUSHING 1 1/2 BORE DAYCO TYPE SDS	58311-P
26	SCREEN FRAME ASSY 58176-D 304SS	66306-B
27	SEAL-SCR.FR	22312
28	BOTTOM PAN (304SS)	83195-E
29	TABLE ASSY	64166-E
30	SHEAVE DAYCO #2BQ40	32366-P
31	BUSHING DAYCO TYPE SH-7/8 BORE	25737-P
32	V-BELT DAYCO AP-51	53607-F
33	MOTOR BRACKET ASSY	86868-B
34	TAKE AWAY BOX ASSY	71605-B
35	3/8 LOCKWASHER	3600-P
36	3/8-16NC HEX NUT - 304SS	26874-P
37	CAUTION PLATE	111398-L
38	STUD-WING HEAD SOUTHCO #55-12-420-16	92542-P
39	RETAINER "SOUTHCO" #R2-34-101-17	52312-P
40	1/2-NC HEX HD CAP SCR - 1 1/4 LG	71457-P
41	3/8 FLAT WASHER	7020-F
42	3/8-NC HEX NUT SELF LOCKING	91524-P
43	3/8-16NC HEX HD CAP SCR 3/4 LG 304SS	26922-P
44	5/16-18NC HEX HD CAP SCR - 1 LG	91435-P
45	5/16-18NC SELF LOCKING NUT	66812-P
46	NAME PLATE	52562-C
47	BULK HYD FITTING AERODUP #2239-2-45	52316-P
48	GREASE FITTING ALEMITE #610	8784-P
49	HOSE ASSY-LUBE	52319-B
50	5/8-18 SELF LOCKING NUT	73721-P
51	5/8-18 NC HEX HD CAP SCR - 2 LG GRADE 5	76926-P
52	WEIR BOX ASSEMBLY	75651-D
53	SUPPORT LEG ASSEMBLY-LH	75711-C
54	SUPPORT LEG ASSEMBLY-RH	75712-T
55	1/2-13 NC HEX HD CAP SCREW 1 1/4 LG 316 SS	26828-P
56	1/2-13 NC HEX NUT - 316 SS	26791-P
57	1/2 FLAT WASHER - 304SS	26963-P
58	1/2 SPRING LOCKWASHER	61302-P
59	3/8 NC HEX HD CAP SCR x 1 1/4 - 304SS	77064-P
60	3/8 FLAT WASHER - 304SS	26858-P
61	3/8 NC HEX NUT - 304SS - SELF LOCKING	34113-P



\* FOR PROPER INSTALLATION LOCATION SEE REF. BASE NO. 65362-E

FOR INSTALLATION DWG. SEE 79286-E

4	ADDED SCREW ECON 1648-MTR BELT WRENWORE WAS 3/8 NC	11-10-85
3	WAS 56257 @CHGD QTY ECON 111398 @CHGD BASE NO.	3-21-90
2	ADDED 112000, 111399	
1	WAS 52313 PBP UPDATED DWG @WAS 65370	11-11-83

NAME	GENERAL ASSEMBLY
DATE	3-21-90
BY	KLM
NO.	84521