

## 2001 Alfa Laval M6 Series Plate Heat Exchanger - 42 Sq. Ft.

Mfg: Alfa Laval

Model: M6 - MFG

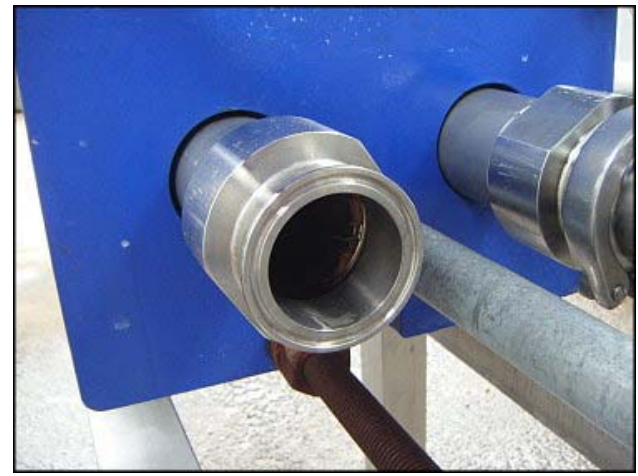
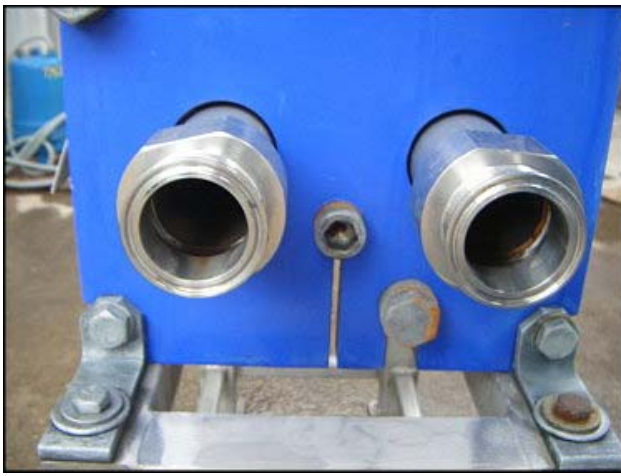
Stock No: TACJ0836.6

Serial No: 30105-58845

2001 Alfa Laval M6 Plate Heat Exchanger. Model: M6 - MFG. S/N: 30105-58845. P.O. no: 73066. (31) 316 stainless steel plates. Individual plate heat transfer surface area: 7-1/4 in. W x 2 ft. 3 in. H. Total surface area of heat transfer: 42.18 sq. ft. MAWP: 150 psi @ 300°F. MDMT: -20°F @ 150 psi. Inlets/outlets: (4) 2 in. S-line. Heat exchanger dimensions: 1 ft. 10 1/4 in. L x 1 ft. 3/4 in. W x 3 ft. 3/8 in. H. Overall plate dimensions: 9-5/8 in. W. x 2 ft. 5-1/2 in. H. Overall Dimensions: 2 ft. 2 in. L x 1 ft. 1 in. W x 4 ft. 4 1/4 in. H.







**CERTIFIED BY**  
**Alfa Laval**  
[www.us.thermal.alfalaval.com](http://www.us.thermal.alfalaval.com)

AWP	150 PSI AT 300 F
MDMT	-20 F AT 150 PSI
SERIAL #	30105-58845
YEAR	2001
MODEL	M6-MFG
AREA	42.18 SQ. FT.
"A" DIM.	112MM W/ 31 0.60MM PL
AL ORDER	923315

P.O. 73066  
TAG N8000078

Parts and Service  
1-800-233-ALFA [www.alfalaval.com](http://www.alfalaval.com)

**WARNING**

READ INSTRUCTION MANUAL  
BEFORE INSTALLATION,  
OPERATION AND MAINTENANCE  
TO AVOID INJURY OR  
PROPERTY DAMAGE

**CERTIFIED BY**  
**Alfa Laval**  
[www.us.thermal.alfalaval.com](http://www.us.thermal.alfalaval.com)

AWP	150 PSI AT 300 F
MDMT	-20 F AT 150 PSI
SERIAL #	30105-58845
YEAR	2001
MODEL	M6-MFG
AREA	42.18 SQ. FT.
"A" DIM.	112MM W/ 31 0.60MM PL
AL ORDER	923315

P.O. 73066  
TAG N8000078