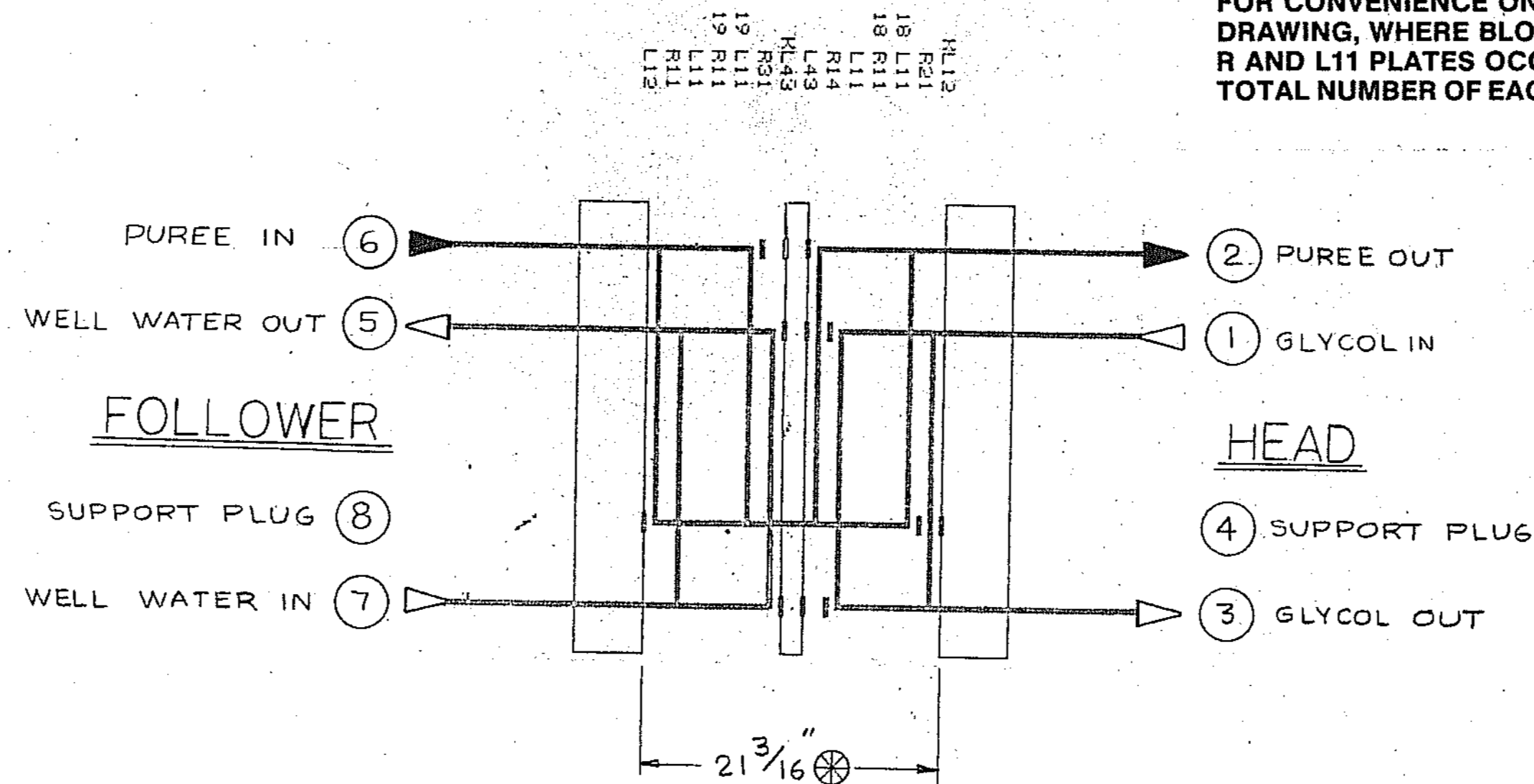


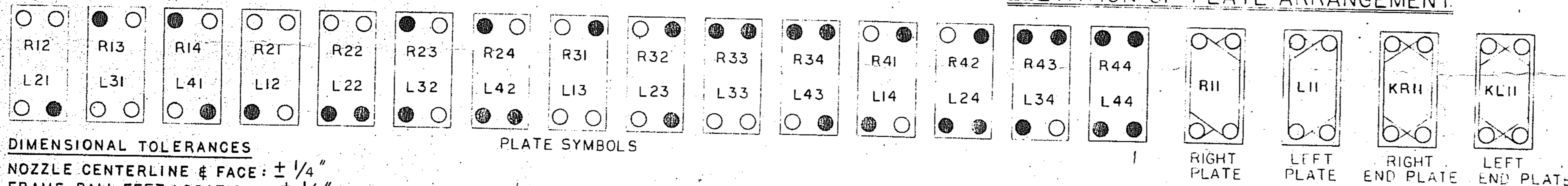
PLATES MUST BE ARRANGED ALTERNATELY LEFT AND RIGHT. FOR CONVENIENCE ON THIS DRAWING, WHERE BLOCKS OF R AND L11 PLATES OCCUR, THE TOTAL NUMBER OF EACH IS GIVEN.



SECTION #1
PASSES
PUREE - 1 OF 21
WELL WATER - 1 OF 21

SECTION #2
PASSES
PUREE - 1 OF 20
WELL WATER - 1 OF 20
Glycol

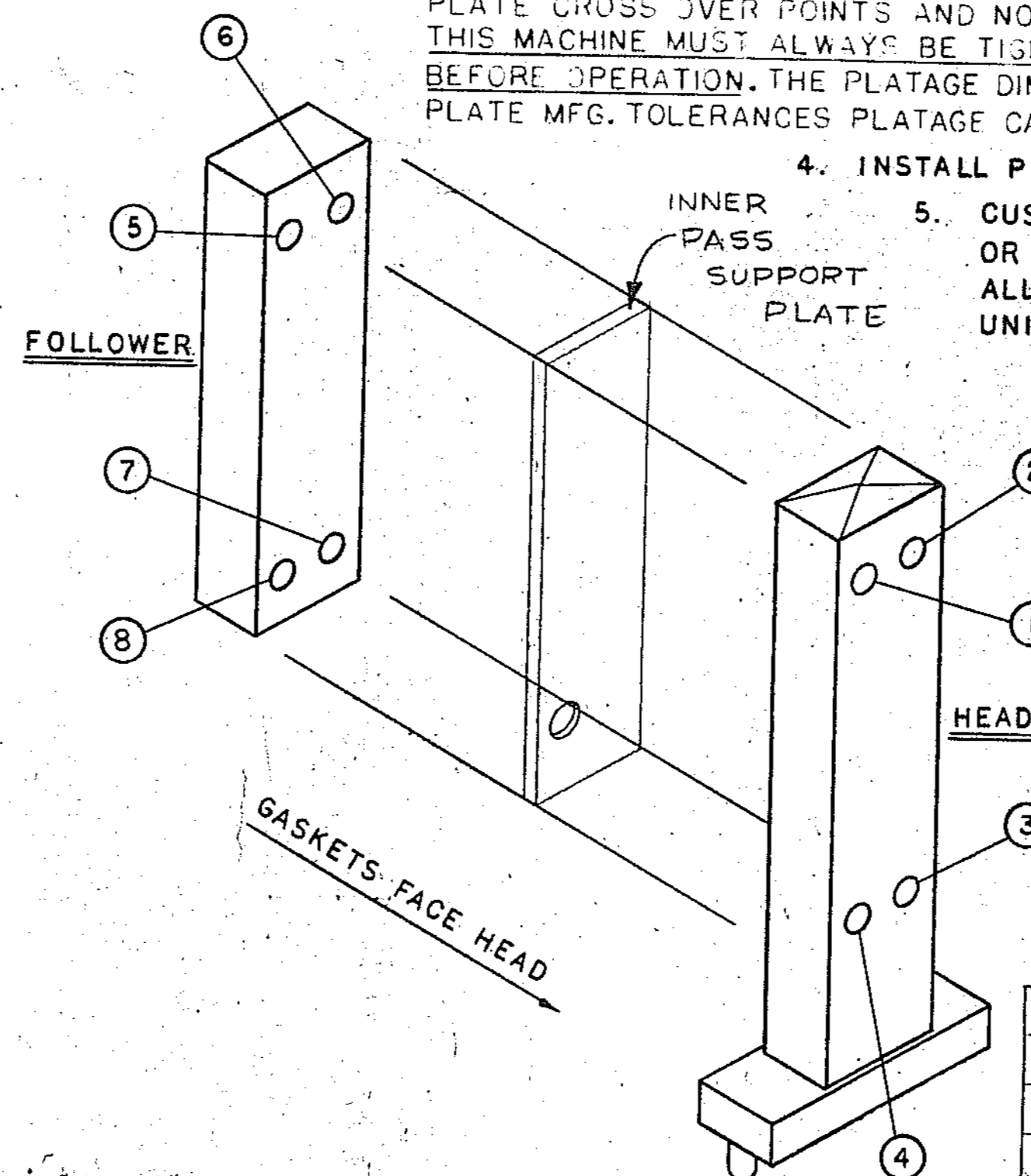
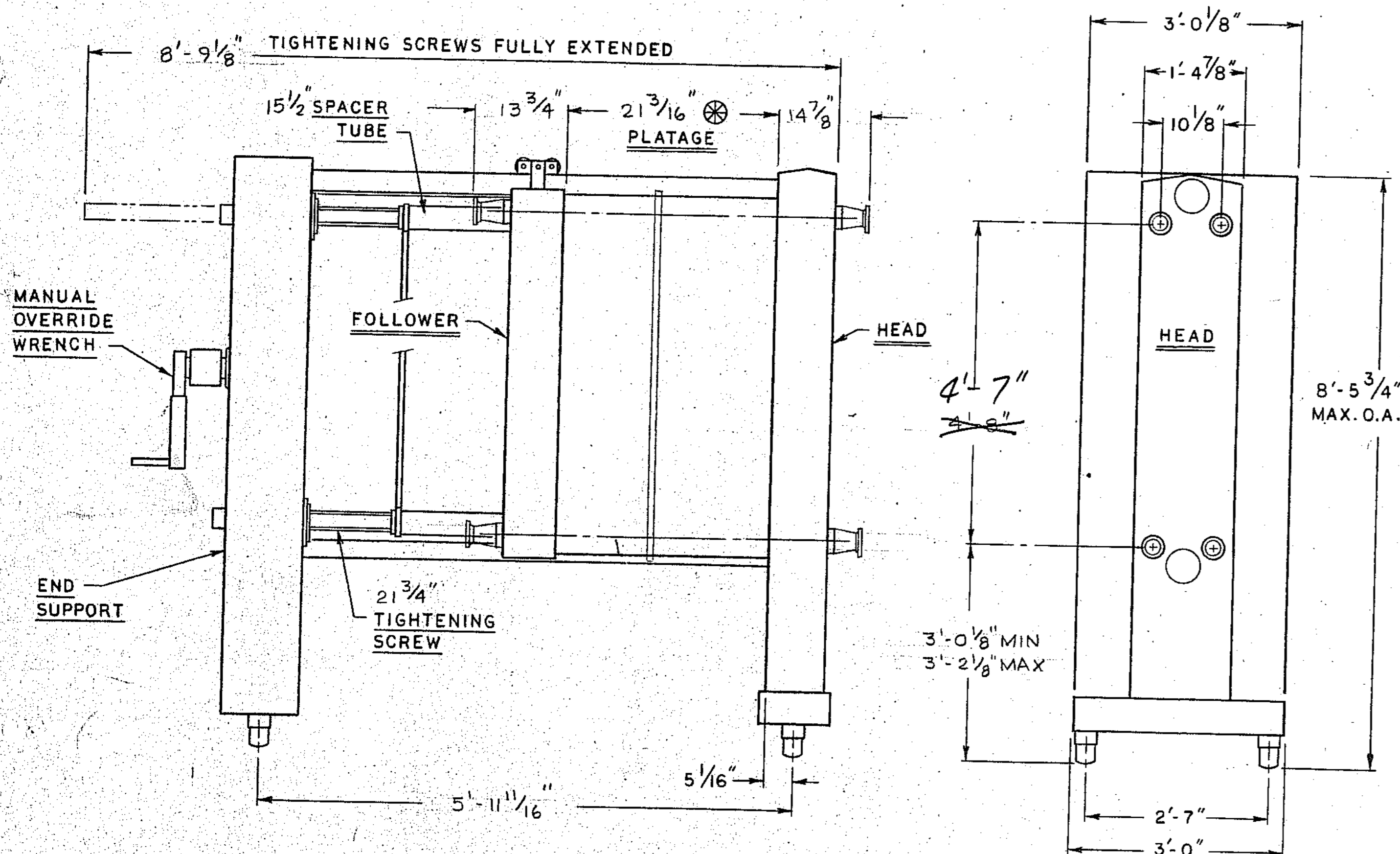
ELEVATION OF PLATE ARRANGEMENT



DIMENSIONAL TOLERANCES
NOZZLE CENTERLINE & FACE: $\pm 1/4"$
FRAME BALL FEET LOCATIONS: $\pm 1/4"$

PLATE SYMBOLS

- NOTES:
- ALL PLATES VIEWED FROM GASKET SIDE
 - END PLATES DENOTED BY LETTER "K" PRECEDING SYMBOL
 - THIS MODEL HEAT EXCHANGER IS DESIGNED TO OPERATE WITH METAL TO METAL CONTACT BETWEEN PLATE SURFACES. ALL SUPPORT IS FROM PLATE CROSS OVER POINTS AND NOT FROM GASKET SEAL. THEREFORE THIS MACHINE MUST ALWAYS BE TIGHTENED TO A DEAD HARD CONDITION BEFORE OPERATION. THE PLATING DIM. SHOWN IS NOMINAL ONLY. DUE TO PLATE MFG. TOLERANCES PLATING CAN VARY $\pm 0.005"$ PER PLATE
 - INSTALL PLATES ALTERNATELY LEFT & RIGHT.
 - CUSTOMER'S PIPING TO FOLLOWER OR CONNECTOR GRID NOZZLES MUST ALLOW FOR FREE MOVEMENT WHEN UNIT IS OPENED FOR SERVICE AND PROVIDE FOR VARIATION OF THE TIGHTENED PLATING DIMENSION OF $\pm 1/2"$ PER 100 PLATES.
 - A PRESSURE RELIEF VALVE MUST BE INSTALLED IN LINES TO PREVENT DAMAGE TO FRAME.
 - PASS PLATE FITTED W/ 316 S.S. BUSHINGS.



	LIQUID	RATE	TEMP. °F	ΔP (PSID)
D U T Y	SQUASH PUREE	8000 #/HR	130° - 75° - 40°	60
	WELL WATER	45 GPM	60° - 91°	< 1
	GLYCOL	120 GPM	35° - 39°	2

LIST OF PLATES 84-R5^{1/2}/300, 206A, 316 S.S. W/PARACRIL GASKETS

TOTAL "L" PLATES 43		TOTAL "R" PLATES 41	
L11-39	KL12-1	R11-38	
L12-1	KL43-1	R14-1	
L43-1		R21-1	
		R31-1	

FRAME SIZE: #2 (60")
MAX. OPERATING PRESSURE: 225 PSI.
PLATING: 21 3/16 INCHES
VOL. OF PRODUCT: 29.5 GALS.
WT. OF MACHINE DRY: 5685 LBS.
WT. OF MACHINE FLOODED: 6180 LBS.
FITTINGS: 3" 316 S.S. TRI-CLAMP

MODEL CR5
HEAT EXCHANGER
WITH HYDRAULIC TAKE-UP
W.O. 19385

P.O. # 3925
BRANCH # 35-38522

APV
APV CREPACO, INC.
385 FILLMORE AVE.
TONAWANDA, NY 14150

DR. BY	W.O.	DATE	DRAWING NO.	REV.
J. WEINHEIMER	19385	7/8/87	4.19385.0001	
SCALE	N.T.S.	SUPERCEDED		