

APV / Crepaco Model 18VS2 Sanitary Centrifugal Pump

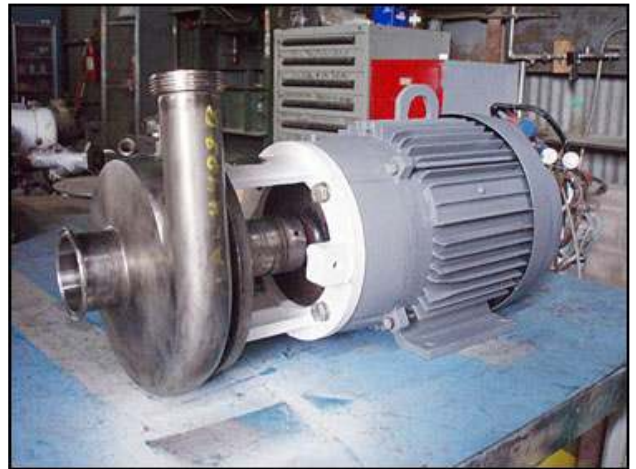
Mfg: APV / Crepaco

Model: 18VS2

Stock No: TAFM482B.a

Serial No: G9374

APV Crepaco Centrifugal Pump. Model: 18VS2. S/N: G9374. Flow rate for new pump is 230 gpm with required horsepower and pressure. Discuss with salesperson your process and product to determine if this refurbished pump should handle your specific duty. Impeller diameter: 7-1/4 in. Lincoln electric motor, 7.5 hp, 1745 rpm, 230/460 V, 20.4/10.2 amps, 60 Hz, 3 phase. Inlet: (1) 3 in. dia. S-line fitting. Outlet: (1) 2 in. dia. ACME fitting. Overall dimensions: 2 ft. 1/2 in. L x 1 ft. 1-3/8 in. W x 1 ft. 1/2 in. H.





HP 7.5 RPM 1745 FRAME 213TC
 VOLTS 230/460 PHASE 3 HERTZ 60
 AMPS 20.4/10.2 TIME RATING CONT.
 CAN BE USED ON 208V SYSTEM UP TO 25 AMPS
 MAY NOT MEET ALL NEMA PERFORMANCE LIMITS ON 208V SYSTEM
 INS. CLASS. F-15
 NEMA DESIGN B TEMP. RISE 75°C
 NEMA FRAME 78 LINCOLN 810
 NOM. MIN. EFF. 81.5% MIN. EFF. 81.0%
 SERIAL NO. 3542
 LE CO. 42820
 LINCOLN ELECTRIC CO. CLEVELAND, OHIO U.S.A.

TEFC
 A.G. MOTOR
 HP 7.5 RPM 1745 M 213TC
 VOLTS 230/460 PHASE 3 HERTZ 60
 AMPS 20.4/10.2 TIME RATING CONT.
 CAN BE USED ON 208V SYSTEM UP TO 25 AMPS
 MAY NOT MEET ALL NEMA PERFORMANCE LIMITS ON 208V SYSTEM
 INS. CLASS. F-15
 NEMA DESIGN B TEMP. RISE 75°C
 NEMA FRAME 78 LINCOLN 810
 NOM. MIN. EFF. 81.5% MIN. EFF. 81.0%
 SERIAL NO. 42820
 LINCOLN ELECTRIC CO. CLEVELAND, OHIO U.S.A.

APV
 LINCOLN ELECTRIC CO. CHICAGO, IL USA
 69374
 SERIAL NUMBER
 18V5Z
 MODEL NUMBER