

3/1 1/2 H.P., 14/7 RPM CONSTANT TORQUE TEFC RIGHT ANGLE GEAR MOTOR, 230 VOLT, 3 PHASE 60 CYCLE FRAME #254CG28F, 2-1/8" OUTPUT.

4" TRI-CLAMP FERRULE W/ SPLIT SEAL & "O" RING GASKET.

8 GA. 304 S.S.

AGITATOR DRIVE PINS

19" DIAMETER S.S. MANHOLE ASSEMBLY W/4" STGM GLASS (3/8") & (3) SWING BOLTS.

INDICATING WELL #26P397 W/ANDERSON JB9B THERMOMETER

2 1/2"-#15A FOR KIENZADE SB-1 CLEANING UNIT (INSTALLED)  
1 1/2" TRI-CLAMPEND (80 GPM @ 25 PSIG)

3" TRI-CLAMP FERRULE W/2" TRI CLAMP NO-FOAM INLET (REMOVABLE)

2"-#15A FOR ATR SPACE THERMOMETER

(6) LEGS @ 60° APART

SARGO THERMOSTAT WELL

165° ZONE CONTROL VALVE

180°

3" S.S. SCHEDULE 40 PIPE

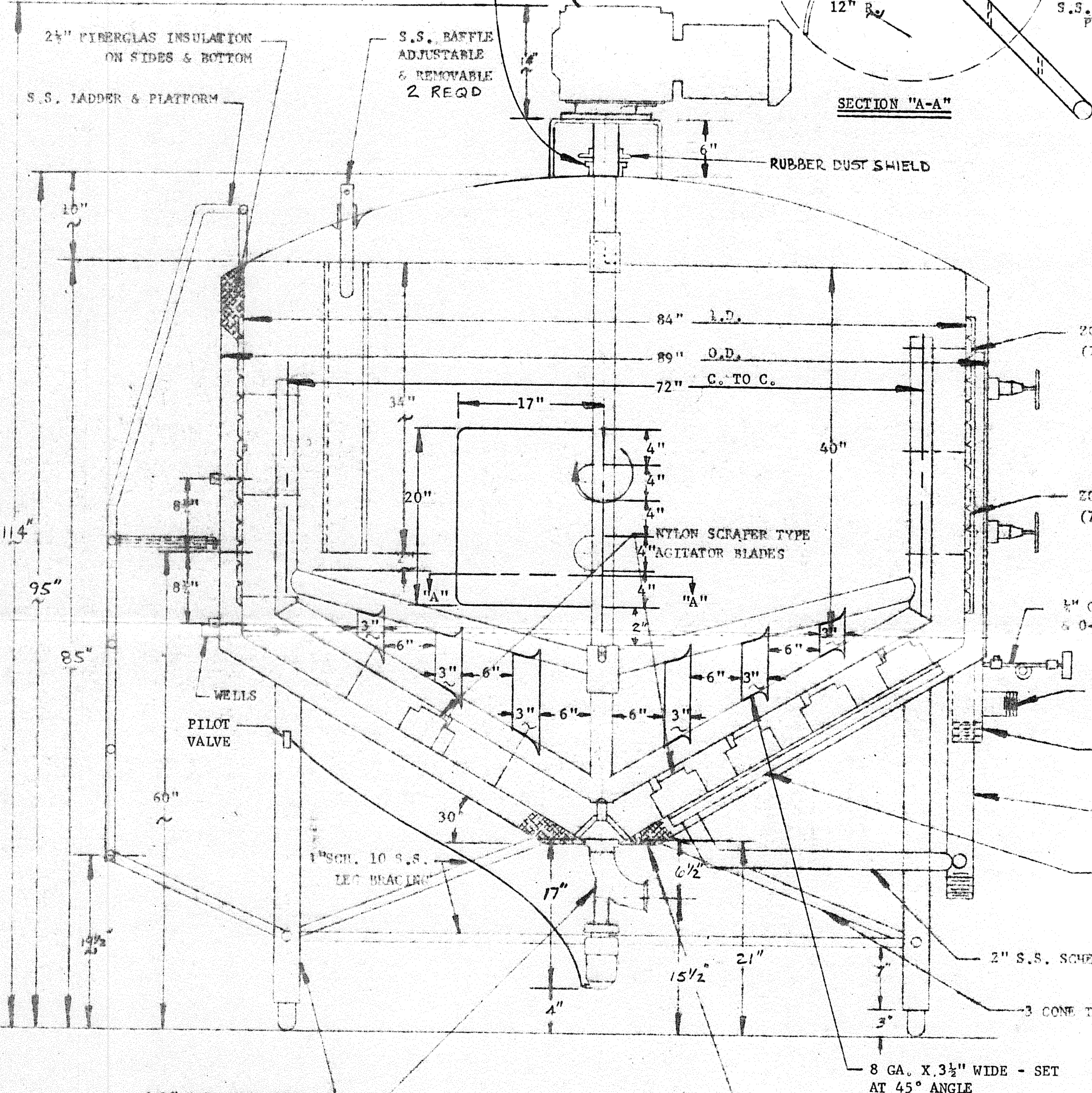
NOTE: FOR HEADER & NOZZLE DETAIL-SEE DETAIL DRAWING.

3/4"x2" S.S. MOTOR MOUNT W/ (4)-9/16" HOLES ON 12 1/2" B.C.

1 1/2" TRI-CLAMP FERRULE FOR FUTURE AIR SPACE HEATER ASSEMBLY

NOTE: VESSEL CONSTRUCTED FOR 10 PSIG PRESSURE UNLOADING. VESSEL MUST BE VENTED IF GRAVITY UNLOADING TO PREVENT VACUUM BUILD UP.

PLAN VIEW  
1" = 1'-0"



ELEVATION VIEW  
1" = 1'-0"

REVISED ISSUE  
DESTROY ISSUES DATED BEFORE  
APPROVED FOR CONSTRUCTION  
BY RO DATE 11/12/76  
JOB 80430 ASME NO. \_\_\_\_\_

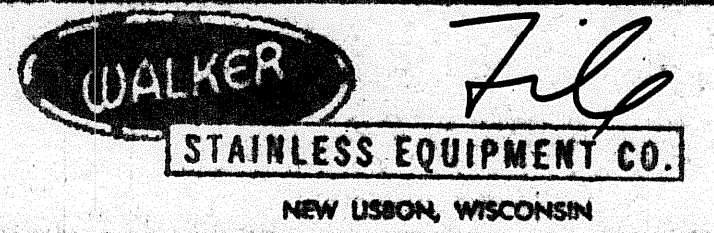
**WARRANTY:**

Walker Stainless Equipment Co. warrants new tanks or equipment manufactured by us to be free from defects in material and workmanship under normal use and service for a period of 1 year after shipment from the factory.

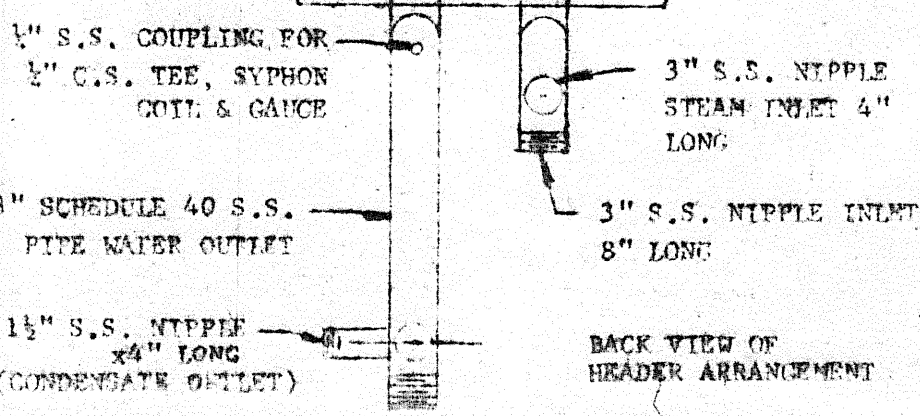
For breach of warranty of any kind, the measure of damages to be recoverable from Walker Stainless Equipment Co. shall be limited to repair or replacement of the part or equipment which examination discloses to the satisfaction of seller to be defective, or the payment of the price or making such repair or replacement, at the option of the seller.

This warranty is expressly in lieu of all other warranties, expressed or implied, and all other obligations and liabilities on our part. Any warranty of merchantability is expressly excluded. We neither assume nor authorize any other persons to assume for us any liability in connection with the sale of our products, and no other warranty will be honored unless in writing and signed by an officer of the corporation. This warranty shall not apply to any product of our manufacture which has been repaired or altered outside our factory, or which in our opinion, has been subject to misuse, negligence or accident. Seller will not assume any charges for repairs made during warranty by anyone other than Walker Stainless. Also seller assumes no liability or responsibility for transportation to and from repair point, nor any loss of time due to repair. This warranty does not cover components of other manufacturers beyond such warranty as is made by such manufacturer.

Any action for breach of warranty shall be commenced within one (1) year of said breach or be forever barred.



MATERIAL:	
Inner Shell:	12GA T304 S.S.
Top Doms:	10GA T304 S.S. (Spdn Dome)
Bottom Inner Cone Head:	8GA T304 S.S.
Heat Exchange Surface:	16GA 1304 S.S.
Insulation:	2 1/2" Fiberglass (Sides & Bottom)
Outer Wrap:	12GA T304 S.S.
Bottom Exterior Cone:	12GA T304 S.S.
Agitator:	S.S. W/Nylon Scraper Blades for Sides & Bottom
Jacket:	100 PSIG at 250°F, test at 250 PSIG Hydrostatic
Finish:	#4 Polish Inside W/Welds Polished (F-6) #4 Polish Outside W/Welds Polished (F-5)



*Handwritten signature: Ineid*

NOTE:  
PROCESSOR SUPPLIED WITH STEAM PRESSURE TEMPERATURE REGULATOR, STEAM TRAP, & STRAINERS & 2 SPEED DRUM SWITCH.

REV. DATE	REVISION DESCRIPTION

SCALE: AS NOTED	APPROVED BY	DRAWN BY C.S.
DATE: 8/8/75		REVISOR
1000 GALLON CONE BOTTOM PROCESSOR		
JOB: ILL. CREAMERY SUPPLY DELSOY PROD. (WHITEHOUSE SUPPLY) DEARBORN, MICH.	DRAWING NUMBER: SP-6979	
NOTE - DO NOT SCALE THIS DRAWING!		