

E.L. Nickell Tube-In Shell Heat Exchanger 1992, D – Superheater, max 100psi at 225F, minimum temperature -20F at 100F, 4in flange in-outlets, 24inD shell, 150 1 in carbon steel tubes, 2 pass, .5in drain, 25inDx21ftL

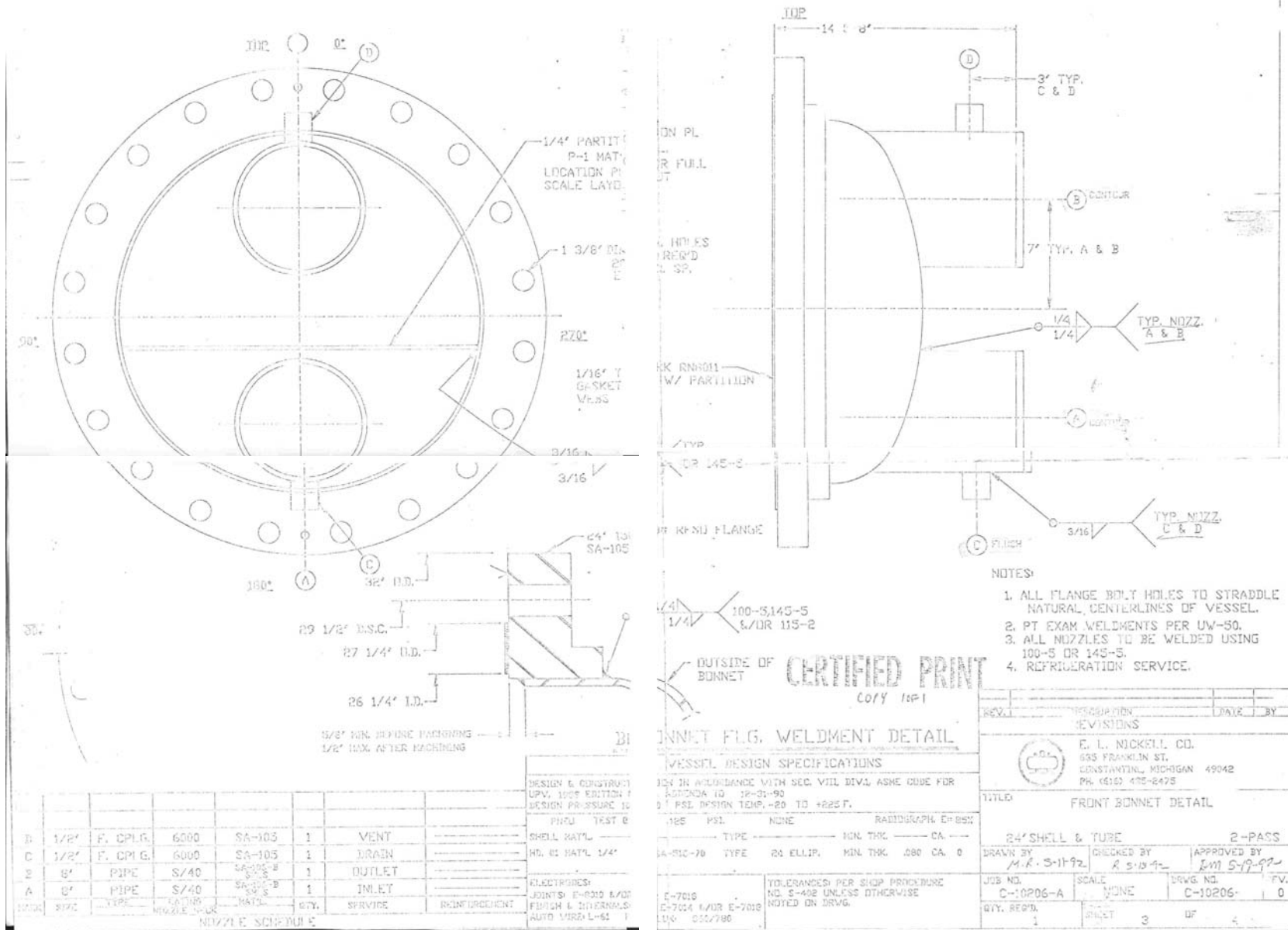
E.L. Nickell Tube-In Shell Heat Exchanger



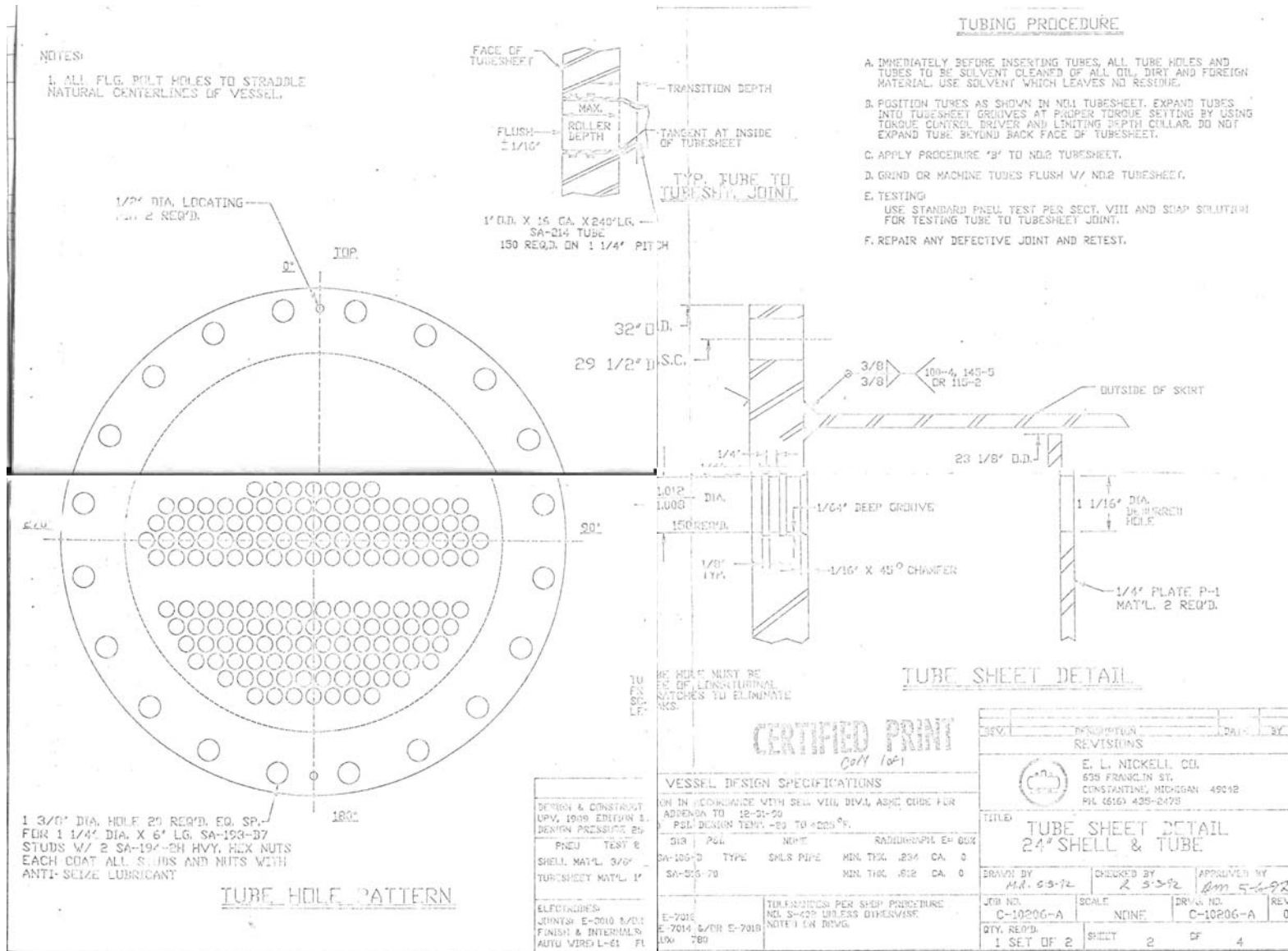
E.L. Nickell Tube-In Shell Heat Exchanger 1992, D – Superheater, max 100psi at 225F, minimum temperature -20F at 100F, 4in flange in-outlets, 24inD shell, 150 1 in carbon steel tubes, 2 pass, .5in drain, 25inDx21ftL



E.L. Nickell Tube-In Shell Heat Exchanger 1992, D – Superheater, max 100psi at 225F, minimum temperature -20F at 100F, 4in flange in-outlets, 24inD shell, 150 1 in carbon steel tubes, 2 pass, .5in drain, 25inDx21ftL



E.L. Nickell Tube-In Shell Heat Exchanger 1992, D – Superheater, max 100psi at 225F, minimum temperature -20F at 100F, 4in flange in-outlets, 24inD shell, 150 1 in carbon steel tubes, 2 pass, .5in drain, 25inDx21ftL



E.L. Nickell Tube-In Shell Heat Exchanger 1992, D – Superheater, max 100psi at 225F, minimum temperature -20F at 100F, 4in flange in-outlets, 24inD shell, 150 1 in carbon steel tubes, 2 pass, .5in drain, 25inDx21ftL

