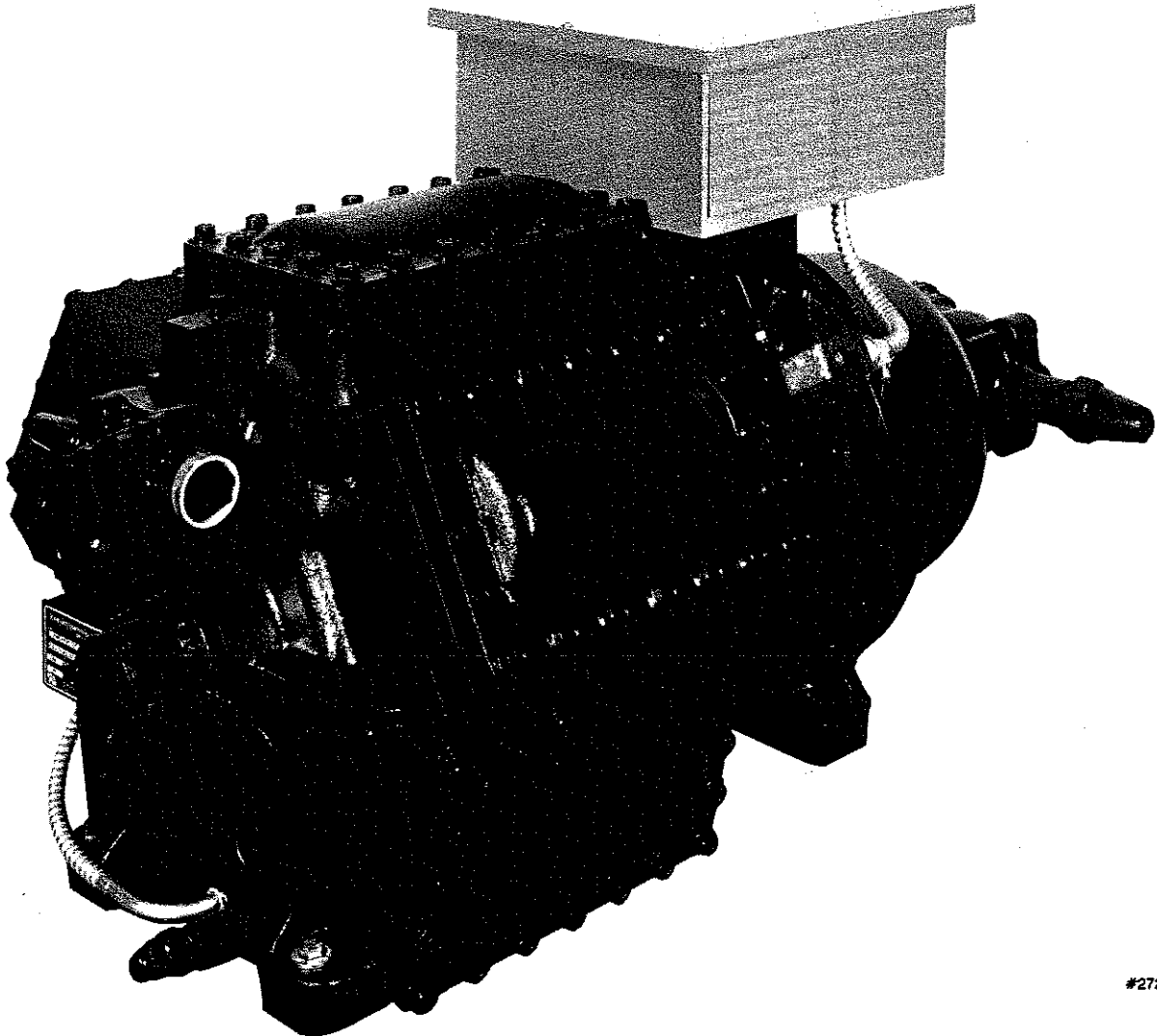


MODELS ZB4H, ZB4J, ZB4K, ZB4M, ZB6N, ZB6R, ZB6S, ZB6W, ZB6AE

(See Page 2 for Complete Model Nomenclature)



#27294

NOMENCLATURE

COMPRESSOR IDENTIFICATION

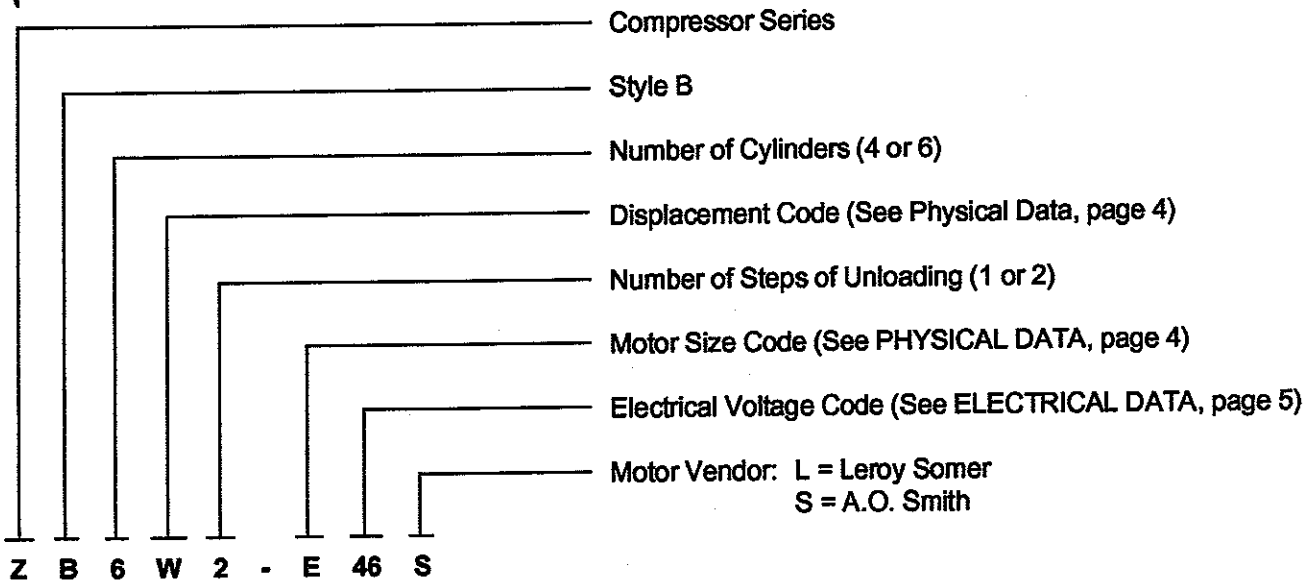
Each compressor is identified by nomenclature as shown below. The nomenclature is printed on a data plate which is located next to the oil pump as shown in Fig. 1. When contacting the factory or ordering renewal parts, include the complete Nomenclature, Serial Number, and Date Code. Be sure these numbers are copied accurately.



MODEL						SERIAL NO.					
A						A					
PART NO.						DATE CODE					
A						A					
VOLTAGE	PH	HZ	FW LRA	PW LRA	UTILIZATION RANGE VOLTS						
B	3	C	D	D	B						
VOLTAGE	PH	HZ	FW LRA	PW LRA	UTILIZATION RANGE VOLTS						
B	3	C	D	D	B						
		THERMALLY PROTECTED SYSTEM		FACTORY TEST PRESSURE		450 PSIG		029-21385B REV.			

#27295

FIG. 1 — COMPRESSOR DATA PLATE



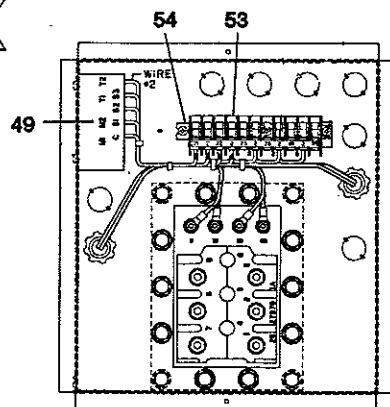
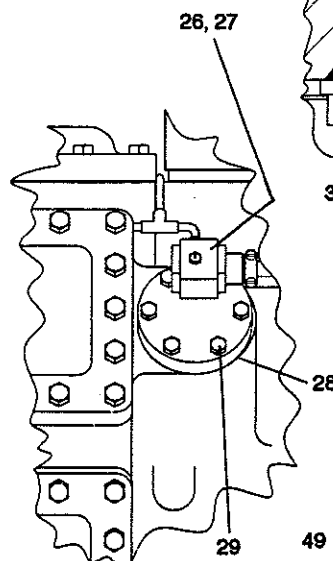
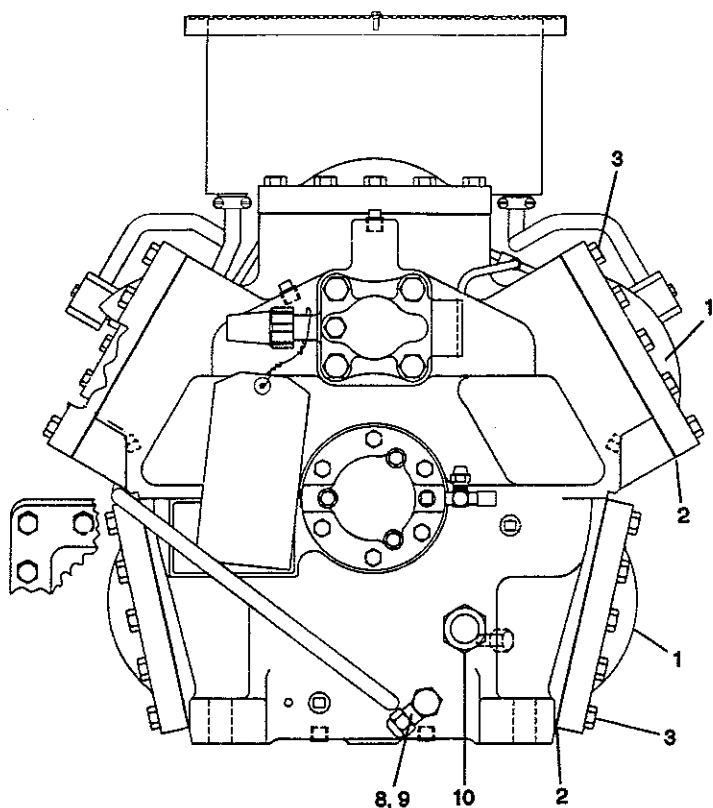
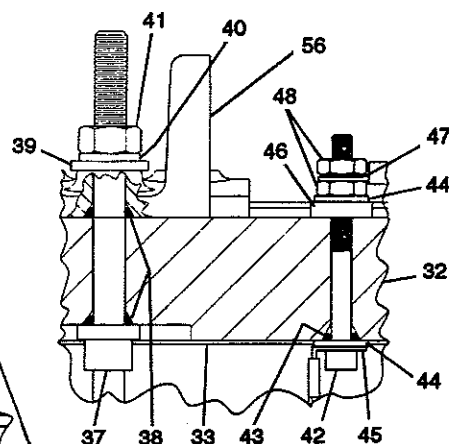
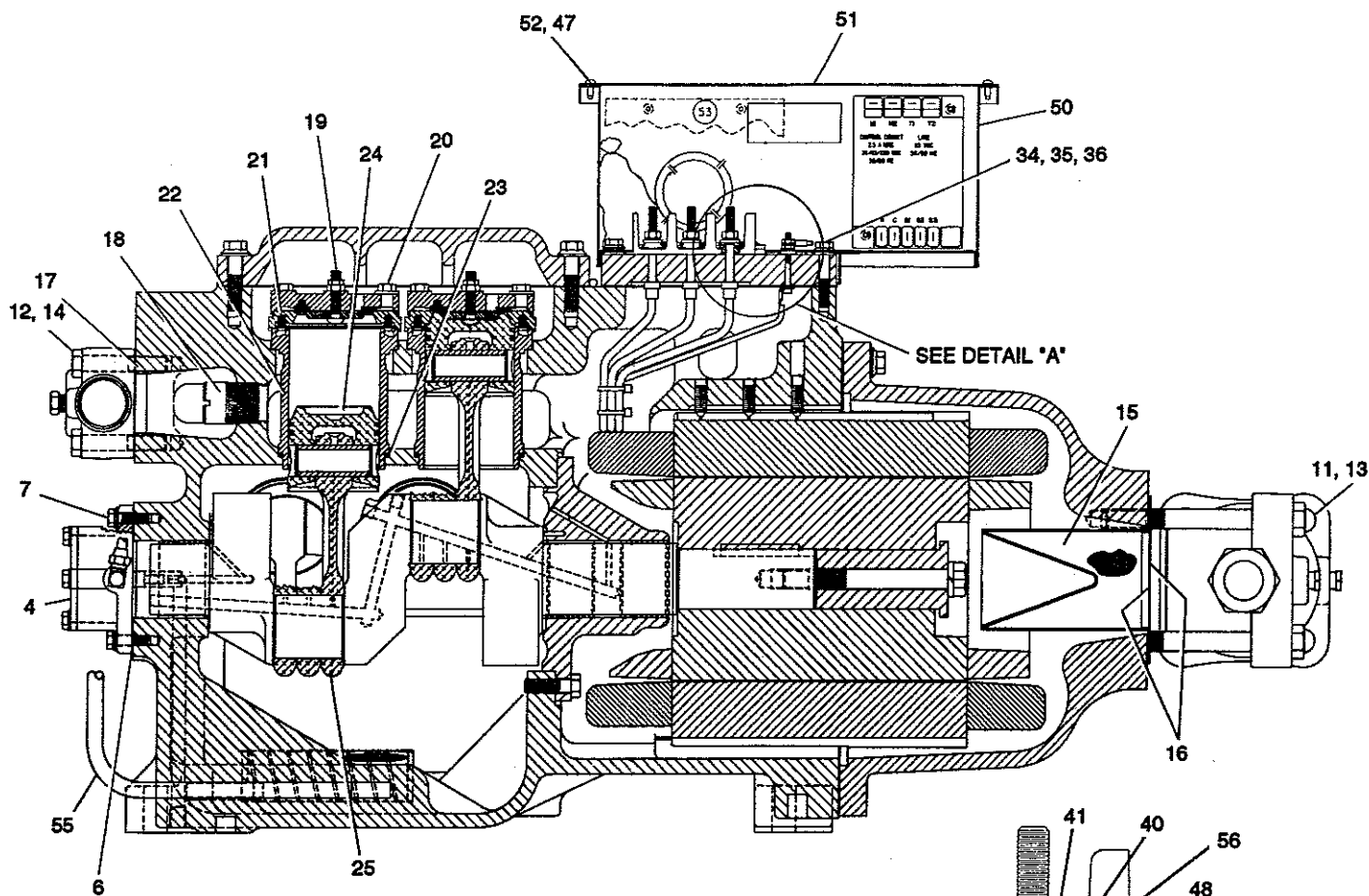
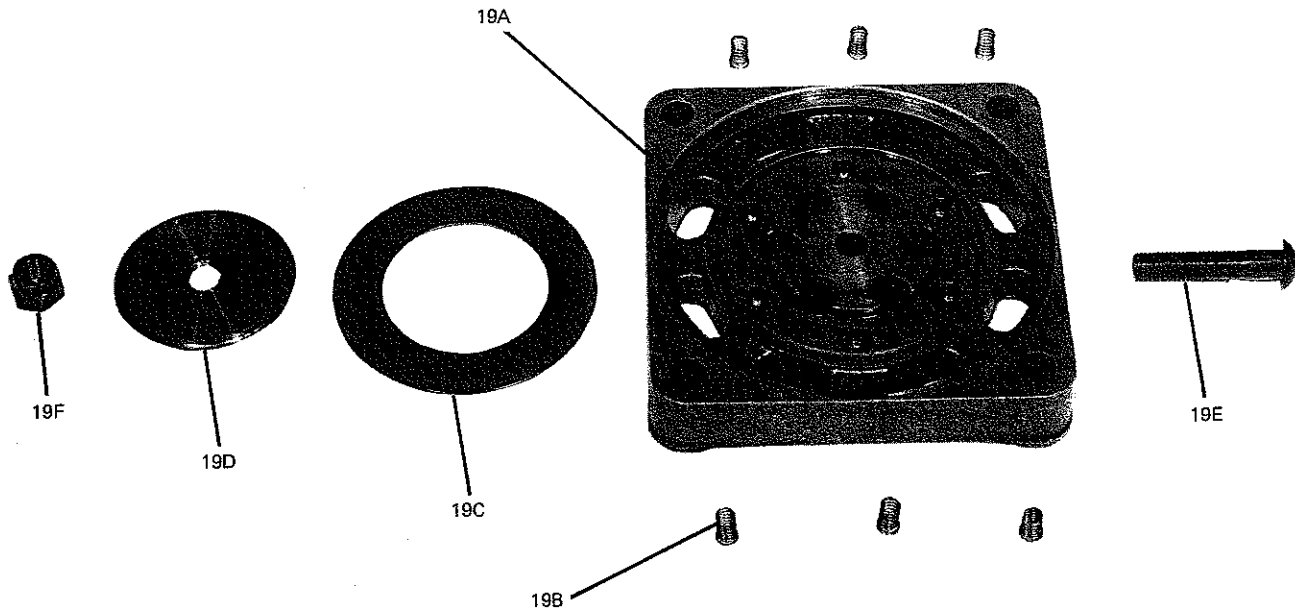


FIG. 2 — COMPRESSOR

ITEM NO.	DESCRIPTION	PART NO.
1	Top Head & Access Cover Plate	665-25185
2	Gasket For Item No. 1	028-12573
3	Cap screw For Item No. 1 (5 / Pkg.)	021-17769-000
4	Pump, Oil	026-32387
6	Gasket, Oil Pump	028-12556
7	Screw, Oil Pump (5 / Pkg.)	021-17689-000
8	Valve Oil Charging	022-01582
9	Seal Cap	023-00977
10	Sight Glass	026-17581
11	Valve, Suction Stop 1-5/8" (Z4H) (Z4J) 2-1/8" (Z4K, Z4M, Z6N, Z6R) (Z6S) 2-5/8" (Z6R, Z6S, Z6W, Z6AE) 3-1/8" (Z6W, Z6AE)	022-03727-003 022-01152 022-01393 022-01393 022-01394 022-08851
12	Valve, Discharge Stop 1-3/8" (Z4H, Z4J) 1-5/8" (Z4K, Z4M, Z6N, Z6R, Z6S, Z6W, Z6AE)	022-03727-002 022-03727-003
13	Screw (Item 11 To Compressor) Z4H Z4J Z4K, Z4M, Z6N, Z6R, Z6S Z6R, Z6S, Z6W, Z6AE Z6W, Z6AE	021-08318 021-17241 021-16821 021-16821 021-16817
14	Screw (Item 12 To Compressor)	021-08318
15	Screen, Suction Strainer Z4H, Z4J Z4K, Z4M, Z6N, Z6R, Z6S Z6W, Z6AE Z6W, Z6AE	026-30599 026-30601 026-30601 026-30602
16	Gasket, Suction Strainer & Stop Valve Z4H, Z4J Z4K, Z4M, Z6N, Z6R, Z6S Z6W, Z6AE Z6AE	028-11912 064-47078 064-47078 064-47079
17	Gasket, Discharge Stop Valve	028-11912
18	Valve, High Pressure Relief	022-03871
19	Discharge Valve Cage Assembly	See Figure 3
20	Screw, Discharge Valve Cage Assembly To Compressor (4 Per Valve — 4 / Pkg.)	221-13824-800
21	Suction Valve Plate Assembly	See Figure 4
22	Cylinder Sleeve Z4H, Z4K, Z6N, Z6S Z4J, Z4M, Z6R, Z6W, Z6AE Z6AE	065-25237 065-25240 065-25325

ITEM NO.	DESCRIPTION	PART NO.	
23	"O" Ring (Used On Unloading Cylinders Only) (ZB6AE)	028-11903 028-05173	
24	Piston Assembly	See Figure 5	
25	Connecting Rod Assembly	See Figure 6	
26 †	Solenoid Valve (Less Coil)	025-30478	
27	Solenoid Valve Coil (120V) (240V)	025-30467 025-30468	
28	Gasket, Solenoid Valve To Compressor	028-12572	
29	Screw, Solenoid Valve To Compressor (6 Req'd. / Valve — 6 / Pkg.)	021-17767-000	
30	Unloader Piston Assembly	See Figure 7	
31	Cover, Unloader Opening (Blank)	665-25245-000	
32	Terminal Block	025-27541	
33	Gasket, Terminal Block	028-12574	
34	Screw, Terminal Box & Terminal Block To Compressor (10 / Pkg.)	021-17768-000	
35	Washer, Plain (14 Req'd. — 10 / Pkg.)	021-05166-000	
36	Washer, Lock (4 Req'd. — 20 / Pkg.)	021-17652-000	
37	Bolt, Motor Terminal (6 Req'd.)	021-14493-002	
38	"O" Ring (2 Req'd. / Terminal Bolt)	028-08959	
39	Washer (1 Req'd. / Terminal Bolt — 10 / Pkg.)	221-05165-800	
40	Lockwasher (1 Req'd. / Terminal Bolt — 20 / Pkg.)	221-03233-000	
41	Nut, Hex (1 Req'd. / Terminal Bolt — 10 / Pkg.)	221-08531-800	
42	Screw, Overload Protector	021-14817	
43	"O" Ring (1 Req'd. / Overload Protector)	028-09347	
44	Washer (2 Req'd. / Overload Protector — 10 / Pkg.)	221-01240-800	
45	Terminal, Overload Protector	025-18650	
46	Washer, Phenolic	028-09525	
47	Lockwasher (20 / Pkg.)	221-01133-800	
48	Nut, Hex (2 Req'd. / Overload Protector — 10 / Pkg.)	221-08661-800	
49	Module, Motor Protector	24V	025-29939
		120V	025-27522
		240V	025-28722
50	Terminal Box	365-25256	
51	Cover, Terminal Box	065-25188	
52	Screw, Terminal Box Cover (10 / Pkg.)	221-13784-800	
53	Terminal Block (11 Req'd. With 1 Unloader; 13 With 2 Unloaders)	025-20944	
54	Terminal Block End	025-20946	
55	Crankcase Heater	120V	025-27924
		240V	025-27936
56	Spacer, Insulating	025-27976-001	
57	Top Head Overhaul Kit	364-47666-017	
58	Top Head Valve Replacement Kit	364-47667-009	
59	Gasket Kits 4 Cyl. 6 Cyl.		365-25317
			365-25318

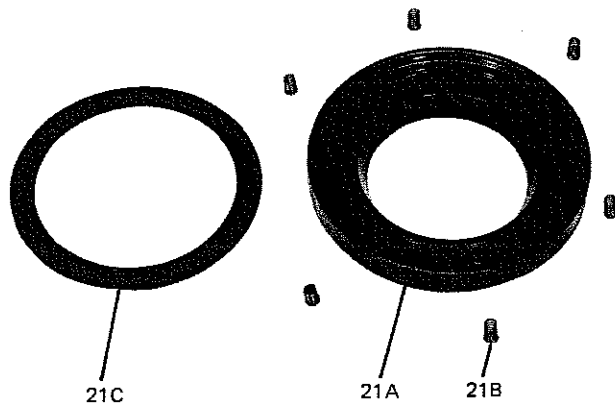
† For units equipped with hot gas unloading there is an orifice located under the valve. The P/N of the orifice is 065-25337-000.



ITEM NO.	DESCRIPTION	PART NO.
19	Discharge Valve Cage Assembly	665-25183-000
19A	Cage, Discharge	065-25178
19B	Spring, (6 Per Valve — 36 / Pkg.)	229-15292-800
19C	Valve, Discharge	065-25184
19D	Disk	065-25177
19E	Screw	021-17219
19F	Nut, Locking (5 / Pkg.)	221-09610-800

#24813

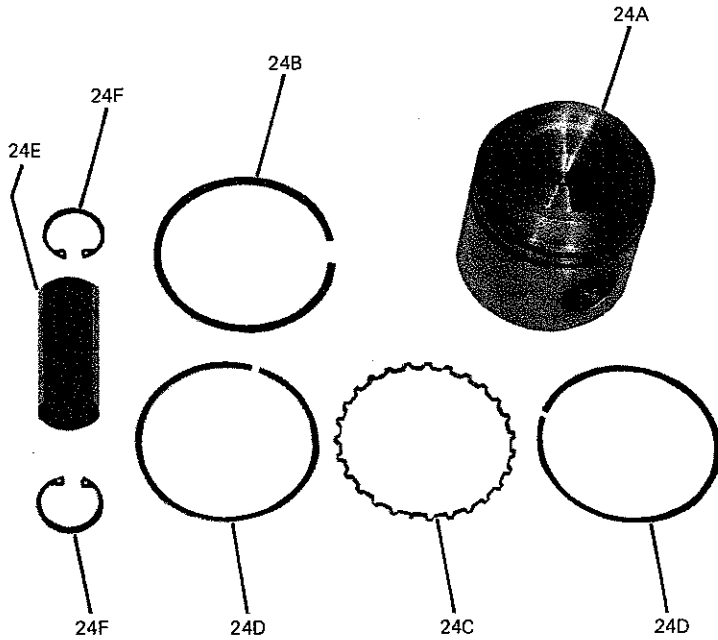
FIG. 3 — DISCHARGE VALVE CAGE ASSEMBLY



ITEM NO.	DESCRIPTION	PART NO.
21	Suction Valve Plate Assembly	665-25181-000
	ZBAE	665-25354-000
21A	Valve Plate	065-25174-000
	ZBAE	065-25324-000
21B	Spring (6 Per Valve — 36 / Pkg.)	229-15292-000
21C	Valve, Suction	065-25182-000
	ZBAE	065-25321-000

#24812

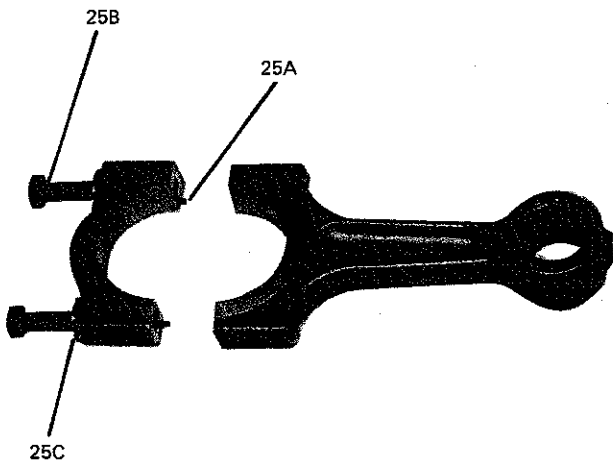
FIG. 4 — SUCTION VALVE PLATE ASSEMBLY



ITEM NO.	DESCRIPTION	PART NO.
24	Piston Assembly Z4H, Z4K, Z6N, Z6S Z4J, Z4M, Z6R Z6W, Z6AE Z6AE	665-25315 665-25316 665-25316 365-25353-000
24A	Piston Z4H, Z4K, Z6N, Z6S Z4J, Z4M, Z6R Z6W, Z6AE Z6AE	065-25226 065-25239 065-25239 065-25322
24B	Compression Ring Z4H, Z4K, Z6N, Z6S Z4J, Z4M, Z6R Z6W, Z6AE Z6AE	029-20220 029-20226 029-20226 029-20901
24C	Expander Ring Z4H, Z4K, Z6N, Z6S Z4J, Z4M, Z6R Z6W, Z6AE Z6AE	028-20221 028-20227 028-20227 Not Used
24D	Wiper Ring Z4H, Z4K, Z6N, Z6S Z4J, Z4M, Z6R Z6W, Z6AE Z6AE	029-20222 029-20228 029-20228 028-20902
24E	Piston Pin	029-20218
24F	Retaining Ring (2 Req'd. Per Piston)	029-20219

#24811A

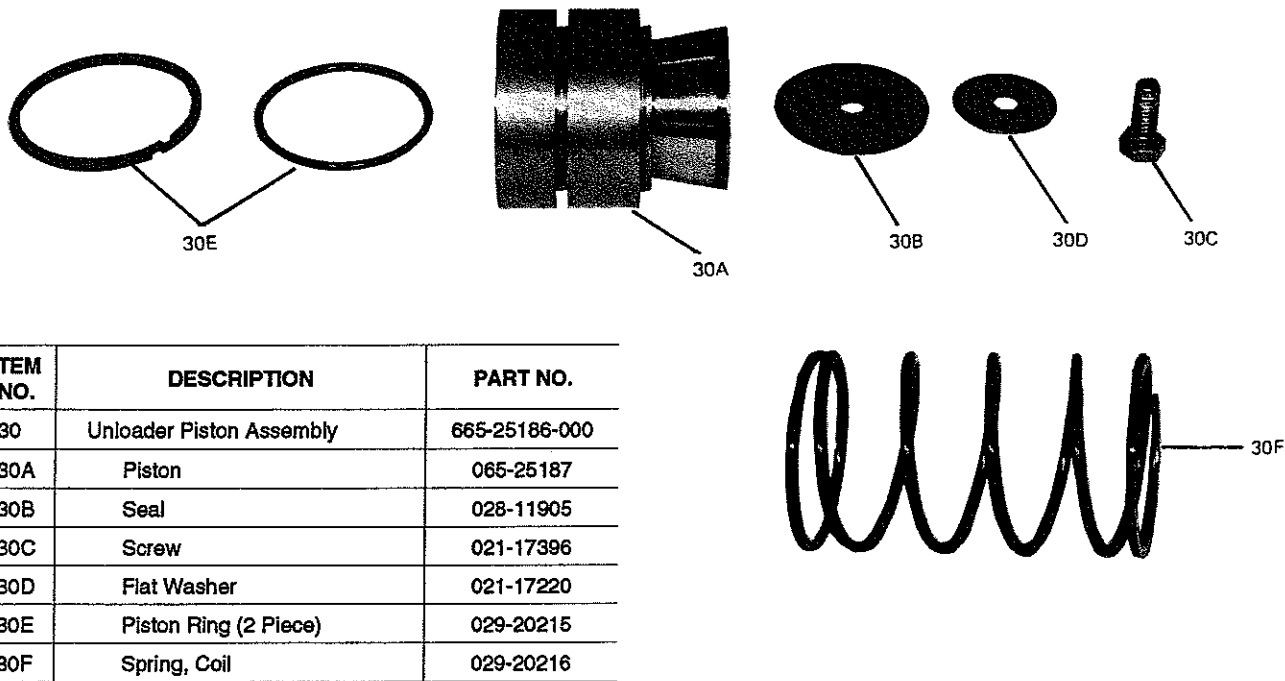
FIG. 5 — PISTON ASSEMBLY



ITEM NO.	DESCRIPTION	PART NO.
25	Connecting Rod Assembly Z4H, Z4J, Z6N, Z6R Z4K, Z4M, Z6S, Z6W, Z6AE	365-25229 365-25242
25A	Dowel Pin (2 Req'd. / Rod)	029-19802
25B	Screw (2 Req'd. / Rod)	021-09643
25C	Washer (2 Req'd. / Rod — 10 / Pkg.)	221-01262-800

#24811B

FIG. 6 — CONNECTING ROD ASSEMBLY



#24815

FIG. 7 — UNLOADER PISTON ASSEMBLY

TABLE 1 — REPLACEMENT MOTORS

VOLTAGES	VOLTAGE CODE	MOTOR SIZE CODE ¹				
		88 FRAME			106 FRAME	
		A	B	C	D	
200-3-60	17	365-25406-001	365-25406-011	365-25406-021	365-25406-101	365-25406-111
230-3-60 / 190-3-60	28 / 59	365-25406-002	365-25406-012	365-25406-022	365-25406-102	365-25406-112
380-3-60	40	365-25406-003	365-25406-013	365-25406-023	365-25406-103	365-25406-113
460-3-60 / 380 / 415-3-60	46 / 50	365-25406-004	365-25406-014	365-25406-024	365-25406-104	365-25406-114
570-3-60 / 500-3-50	58 / 70	365-25406-005	365-25406-015	365-25406-025	365-25406-105	365-25406-115
220-3-50	63	365-25406-006	365-25406-016	365-25406-026	365-25406-106	365-25406-116
440-3-50	43	365-25406-007	365-25406-017	365-25406-027	365-25406-107	365-25406-117
346-3-50	64	365-25406-008	365-25406-018	365-25406-028	365-25406-108	365-25406-118
363-3-50	36	—	365-25406-019	—	365-25406-109	—

1. As indicated by the model number (See Nomenclature on pg. 2). Replacement motor must be same size as original. Rotors and stators are not available separately. Replacement motors include Item 37, pg. 3.

