

NTP ORDER DETAIL



EVAPCO, INC.
1234 Brady Blvd.
Owatonna, Minnesota 55060
Telephone: 507-446-8005
Facsimile: 507-446-8239
Email: evapcomn@evapcomn.com

Customer PO #: WN1701017
Evapco Serial #: I029422

Date: March 20, 2002
Plant: Iowa

Sold To: Kraft Foods, Inc
Eng. Finance – GN
P.O. Box 7188
Madison, WI. 53707-7188
Attn: Tammie L. Slade 608-285-4368

Ship To: Kraft Foods, Inc.
220 Park Center Drive
Winchester, VA. 22603

PROJECT:
ROOM 38°F Cooler

QTY: one
MODEL: NTPA-66-0406

ENGINEER: Stahlman
REP: North Atlantic - Stanton

TERMS
CREDIT APPR
TAX STATUS
NO. PRINTS

FOB FACTORY PPA
SHIPMENT REQD
SCHEDULED
FOR 5/15/2002

SHIP VIA
MARK PKGS
CARRIER CALL 48 HRS PRIOR TO DELV
NAME Candi L. Windsor

General Information

Model # NTPA-66-0406 (Unit Tagging – AU-35)

Left hand unit.

Left hand cooling coils.

Left hand hot gas pan coil piping.

Left hand drain connections.

Casing:

Galvanized steel exterior.

4" foam in place panels.

Liner is galvanized steel. **(BB)**

Standard galvanized steel drain pan.

Doors standard.

Unit mounted roof deck.

Unit has a pitched base to match the roof pitch.

Return air opening is in the bottom with grating.

Weights:

Unit _____ 9,150 lbs

Refrigerant _____ lbs

Frost _____ lbs

Discharge plenum 1,595 lbs

TOTAL WEIGHT 10,745 lbs

Fan Section

Fan Model # U2-1810-7-36-REG

Number of fans: 4

Fan diameter: 36"

System pressure drops

external static	<u>0.50</u>	"
cooling coil	<u>0.30</u>	"
TOTAL	<u>0.80</u>	"

40,425 CFM @ 0.5" external static pressure.

1160 RPM

1.95 Brake Horsepower (At +38°F operating temperature)

Fan is Airfoil.

Motors

(4) 2 H.P.

460 volt

3 phase

60 Hz.

1200 RPM

TEFC.

Premium efficiency.

Motor frame size 184T

Accessories

Galvanized steel discharge plenum with thirteen (13), 18" diameter outlets (special 3-way)
Provide plenum extensions.

Controls

Main control panel, NEMA 4.

Control voltage is 120 volt.

Non-fused disconnect switch. (BF)

Unit motor starter(s), IEC. (BG)

Refrigeration Valves - None

Misc. Controls

Interior service lights (2) without transformer, 120 volt by others.

Cooling Coils

Room temperature: 38° F

6 Rows, 4 FPI

Hand of coil: LH

Number of coils: 1

47.5" high X 201" wide face dimensions

Tonnage: 35.4

Coil volume: 10.4 cu. Ft.

Saturated suction temperature 24° F

T.D. 12° F

Type of refrigerant: recirculated ammonia, 3 to 1 feed

Number of inlets 1 Number of outlets 1

Evapco Serial # 1029422

Page 3

Feed: bottom

Inlet size: 1" Outlet size: 3"

Material type: all aluminum construction **(BK)**

Flanges included.

Hot Gas Pan

The unit includes a pitched, galvanized steel drain pan.

Drain complete with hot gas defrost pan coil.

Pan coil shall have 1.0" inlet and 1.0" outlet.

Factory installed pan to coil check valve, 1.0".

3/22/2002

3/28/02- added premium motors and plenum extensions, changed tonnage and td.

MODEL (ONE) # - NTP-66-0406-SP LEFT HAND (SPECIAL)

UNIT TAG: AU-35

40,425 CFM @ 0.50" EXTERNAL STATIC PRESSURE

CASING: GALV EXTERIOR, PAINTED WHITE W/ GALV INTERIOR

FANS: (4) 36" DIA FANS, U2-1810-7-36-REG
 MOTORS: (4) 2.0 H.P. (1.95 B.H.P. @ +38°F OPERATING TEMPERATURE)
 460 VOLT, 3 PHASE, 60HZ, 1200 RPM, TEFC, PREMIUM EFFICIENCY, 184T

COOLING COIL:

ROOM TEMPERATURE: 37°F.
 (1) 6 ROW, 4 FINS PER INCH, 47.5"H X 201"W, L.H.
 TONNAGE: 35.4
 COIL VOLUME: 10.4 CUBIC FT.
 SATURATED SUCTION TEMPERATURE: 24°F.
 I.D.: 12" F.
 REFRIGERANT: RECIRCULATED AMMONIA, 3 TO 1 FEED

INLET: 1.0"
 OUTLET: 3.0"
 BOTTOM FEED

CONSTRUCTION: ALL ALUMINUM CONSTRUCTION (FLANGES INCLUDED)

HOT GAS PAN: GALVANIZED STEEL DRAIN PAN W/

HOT GAS DEFROST PAN COIL

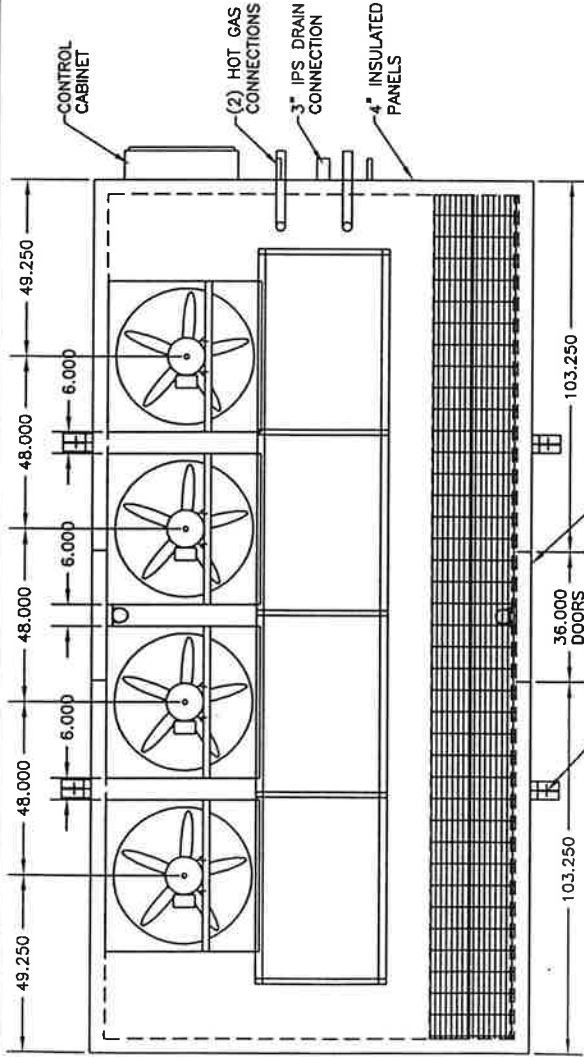
INLET: 1.0"

OUTLET: 1.0"

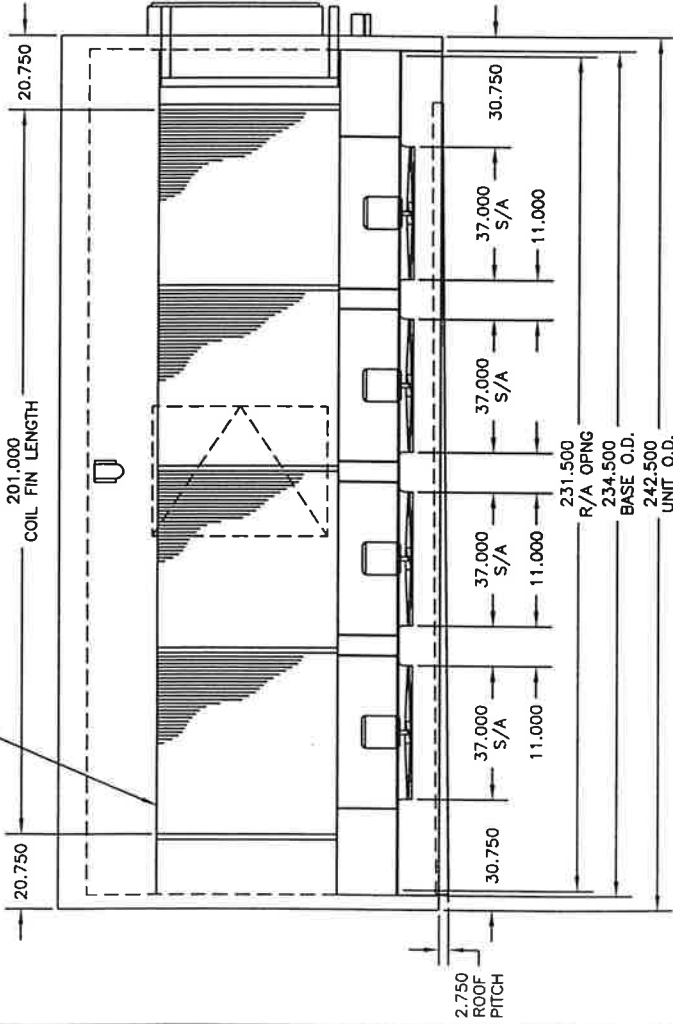
WEIGHT: UNIT: 9,150 LBS.

PLENUM: 1,595 LBS.

TOTAL WEIGHT: 10,745 LBS.

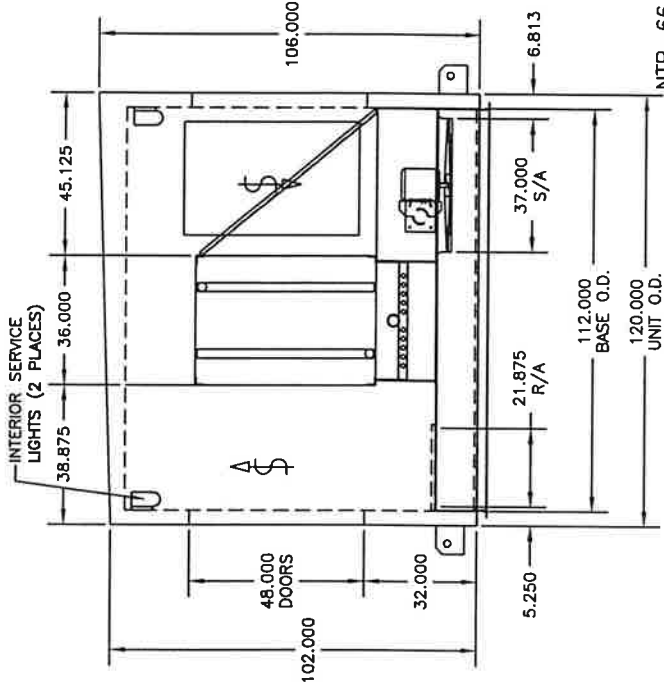


PLAN VIEW



ELEVATION VIEW

ROOF PITCH: 10 INCHES - 70 FEET
 PITCH IS DOWN AND AWAY FROM CONNECTIONS



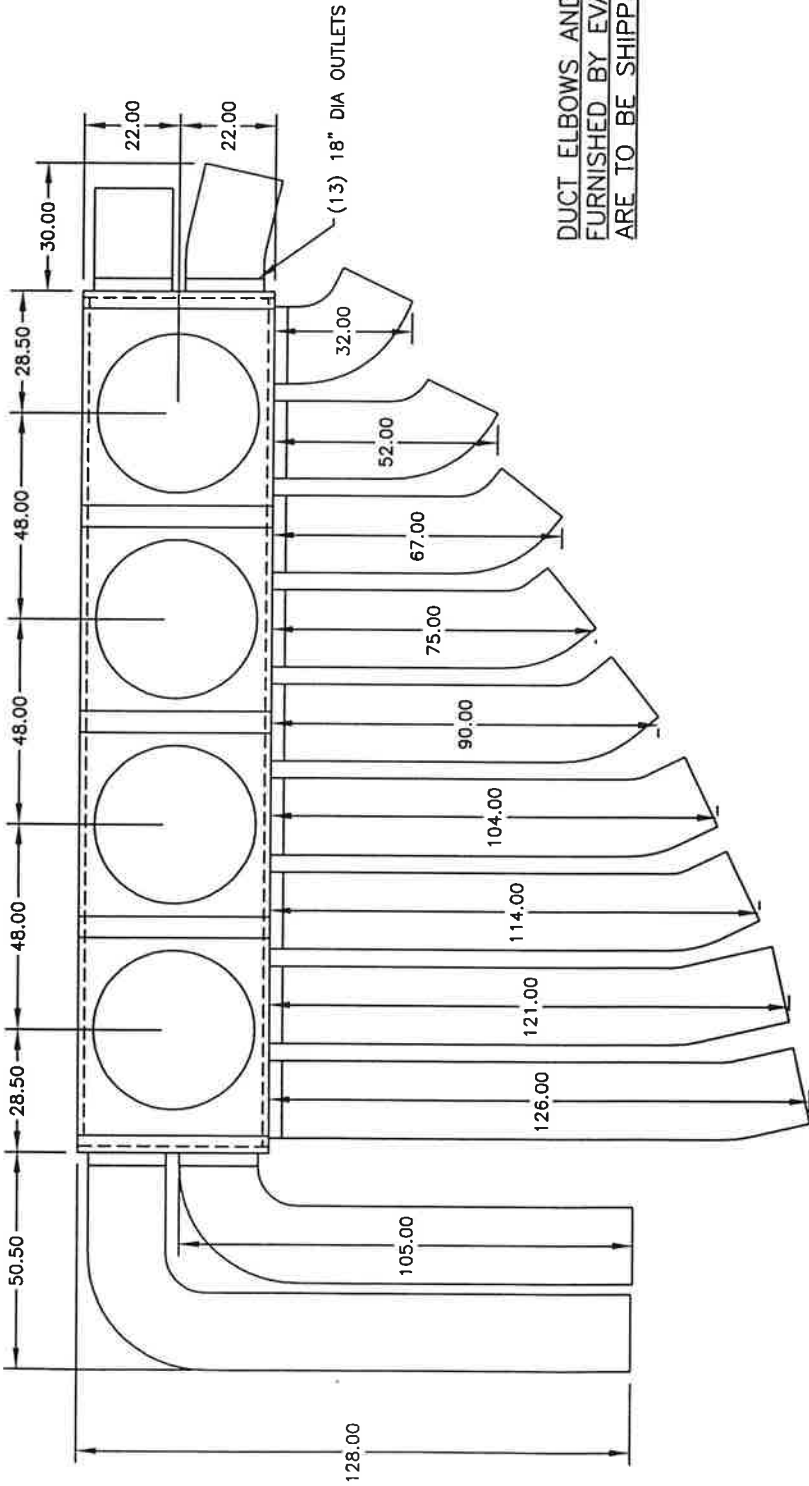
END VIEW

NTP-66 LEFT HAND UNIT
 (SPECIAL WIDTH) UNIT TAG: AU-35

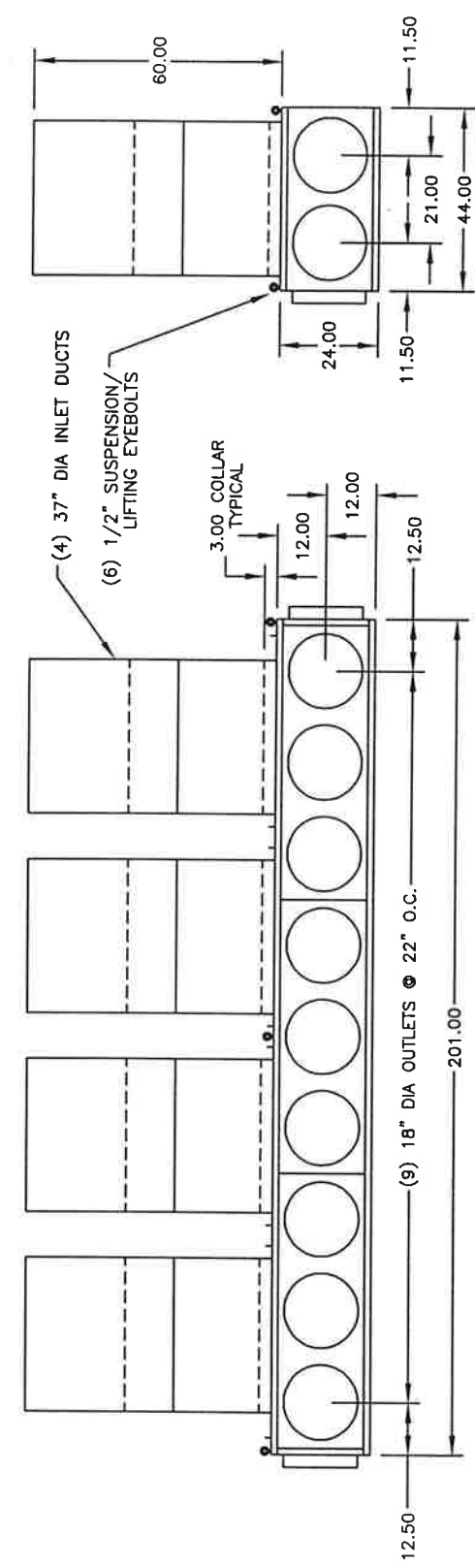
REV. DESCRIPTION		REVISIONS	
A	ADDED S/A LOCATIONS (3-27-02)	DDN	DDN
B	REVISED DATA (3-28-02)	DDN	DDN

TITLE: KRAFT FOODS
 WINCHESTER, VA
 DATE: 3-25-02
 DRAWN BY: DDN
 CHECKED BY: DDN
 SCALE: N/A
 UNIT: N/A
 PART NO.: 1029422
 REV. NO.: 1029422

CONFIDENTIAL
 This document is the property of Evapco, Inc. It should not be copied or disseminated without prior written authorization.

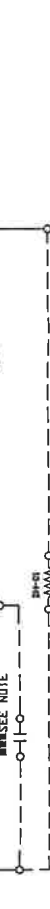
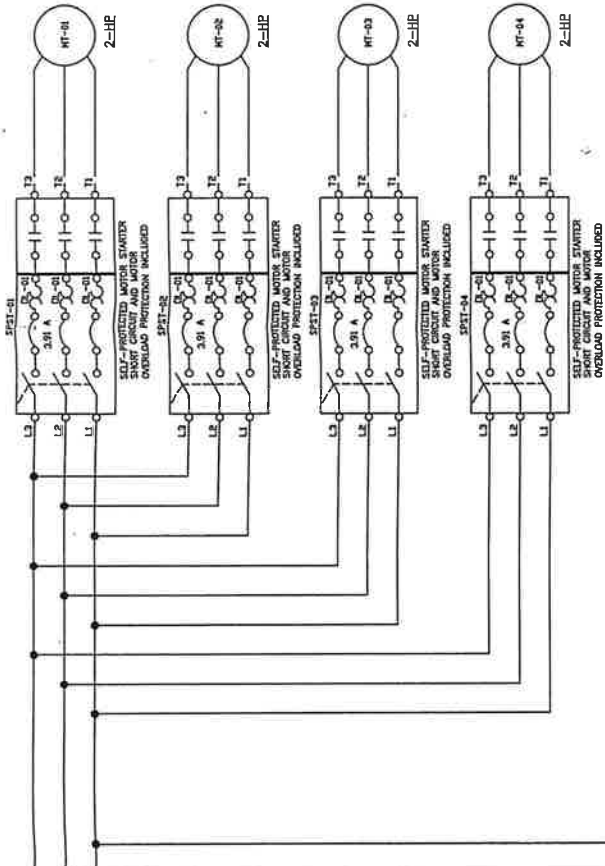


DUCT ELBOWS AND EXTENSIONS ARE FURNISHED BY EVAPCO & EXTENSIONS ARE TO BE SHIPPED IN 10 FOOT PIECES.



TITLE		KRAFT FOODS, WINCHESTER, VA	
UNTL		NTP-66 DISCHARGE PLENUM - 3-WAY	
DATE	3-25-02	ORIGIN	
DESIGN	BY DON	SCALE	
CHKD	BY	DATE	
APP'D			
REV. NO.		1029421-22-3	
REV. DESCRIPTION		BY	
REVISIONS			

CONFIDENTIAL
This document is the property of Evapco, Inc. It should not be copied or disclosed without prior written authorization.



Req. G	LT-01.2	Interior lights	Slonco	VWX10A	Baldor
Req. C	MT-01.2,3,4	2 HP motor, TEAO, 1200 RPM, premium efficiency, 194T frame	Baldor		Baldor
016-02602	P TR-01	Transformer (480 X 120) 500 VA	Acme	TA281215	3-E
016-02564	P SPST-01.2,3,4	Contactor - 5 HP @ 460 VAC(120V COIL)-9 Amp	Allen Bradley	100C09D10	Northland
016-02551	P SPST-01.2,3,4	Motor Protector - (2.5-4 Amps) Connecting Module - 140M-C, 140M-D to 100C09...C23	Allen Bradley	140M-C2E-S40	Northland
016-02574	P SPST-01.2,3,4	Disconnect, 30 Amp, Non-Isolable, Lugs included	Allen Bradley	140M-C-PEC23	Northland
016-02597	P SW-01	Fuseholder-Class M 1/322 X 1 1/2 (2 pole)	Allen Bradley	149A/DN30	Northland
016-02281	P FU-01	Fuseholder-Class M 1/322 X 1 1/2 (2 pole)	Bussman	BM 6032PO	Northland
016-02206	P FU-01	Fuse (1/32 X 1 1/2) 3.0 A	Bussman	FNQ-R 3	Northland
016-02222	P FU-02	Fuse (1/4 X 1) 7 Amp	Bussman	MDL-7	Northland
016-02223	P FU-03	Fuse (1/4 X 1) 10 Amp	Bussman	MDL-10	Northland
016-02279	P FU-02.3	Fuseholder-Series 8000 1/4 x 1	Bussman	S-8301-1	Northland
016-02851	P SW-02	Switch, Service Light, 20 A	Hubbell	ES7501	Northland

- SYMBOLS**
- FACTORY CONNECTION
 - FIELD CONNECTION
 - FACTORY WIRING
 - WIRING BY OTHERS
 - ▽ COMPONENT WIRE NUMBER
 - *** OPTIONAL CONTROL BY OTHERS REMOVE JUMPER WIRE BEFORE INSTALLING
- NOTE: WIRE COLORS**
- BLACK — HIGH VOLTAGE (460)
 - RED — 115 VAC LOAD AND CONTROL
 - YELLOW — 24 VAC
 - WHITE — NEUTRAL
 - GREEN — GROUND

CONFIDENTIAL
This document is the property of Evapco, Inc. It should not be copied or disclosed without prior written authorization.

REVISONS		TITLE	
A	4-02-02 Add drain heater	KRAFT MPA-66-0406	
REV.	DESCRIPTION	DATE	ORDER
		4-1-02	WINCHESTER, VA
		DRWN	SCALE
		GRT	
		BY	
		REV	
		PART NO.	
		1029421,22	
		REV. NO.	
		E1	
		A	



EVAPCO, INC.
1234 Brady Boulevard
Owatonna, Minnesota 55060

Telephone: 507-446-8005
Facsimile: 507-446-8239
E-mail: evapcomn@evapcomn.com

Project Name: KRAFT FOODS - 38°F COOLER UNIT AU-35

Model Number: NTPA-66-0406

Serial Number: I029422

EVAPCO® STANDARD WARRANTY

The subject unit (s) is warranted against failure caused by defects in materials and workmanship for one-year from the date of start-up, but not to exceed eighteen (18) months from the date of shipment. The evaporator warranty includes all structural components, coil, hot gas coil and pan (if supplied), electric motors, shafts, bearings, pulleys, mechanical equipment supports, fan belts, fans, fan screens and their support, and electrical components.

In addition to the unit warranty above, EVAPCO warrants the thermal performance of the unit as shown on the certified drawings delivered to the customer for a period of one-year from the date installation is completed in accordance with good engineering practices, but in no event shall such warranty period exceed eighteen (18) months from the date the unit is shipped by EVAPCO. If after installation and start-up there is any question regarding thermal performance of the equipment, at the owner's request EVAPCO will send its engineers to the jobsite to conduct a performance test. This test may be observed by the owner and the consulting engineer or by their authorized representatives. If the results of the evaluation show the equipment to be deficient, EVAPCO will make the necessary repairs or alterations to correct the deficiency at no cost to the owner. If the equipment is found to be performing in accordance with its certified drawings, the owner will reimburse EVAPCO for all direct expenses incurred in connection with such performance test.

All other expenses or implied warranties of any kind whatsoever, including without limitation any warranties of merchantability or that the unit and equipment are fit for any particular purpose and any warranties that might otherwise arise out of a course of dealing between the parties or usage of trade, are hereby excluded. The sole remedy for breach of the warranties set out above shall be repair or replacement of the equipment by EVAPCO at its option. Under no circumstances shall EVAPCO be liable for lost profits, lost savings, personal injuries, incidental damages, economic loss, property damage, or other consequential, incidental, special or contingent damages. Even if EVAPCO has been advised of the possibility of such damages. In addition, EVAPCO shall not be responsible for any injuries or damages of any kind whatsoever under any theory of tort to the extent caused by misuse of the product by buyer or any third party.

Guarantee of Thermal Performance by EVAPCO

EVAPCO® unequivocally guarantees the thermal performance of its equipment as shown on the certified drawings, when the equipment is installed in accordance with good engineering practice. If after installation and start-up there is any question regarding thermal performance of the equipment, at the owner's request EVAPCO will send its engineers to the jobsite to conduct a performance test. This test may be observed by the owner and the consulting engineer or by their authorized representatives. If the results of the evaluation show the equipment to be deficient, EVAPCO will make the necessary repairs or alterations to correct the deficiency at no cost to the owner. If the equipment is found to be performing in accordance with its certified drawing, the owner is expected to reimburse the company for its costs associated with this performance test.



AOS2636