

Niro R/O System Control Panel Enclosure

Mfg: Niro

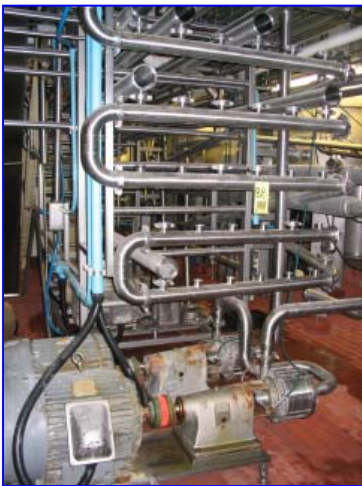
Model:

Stock No. HDLF88.50

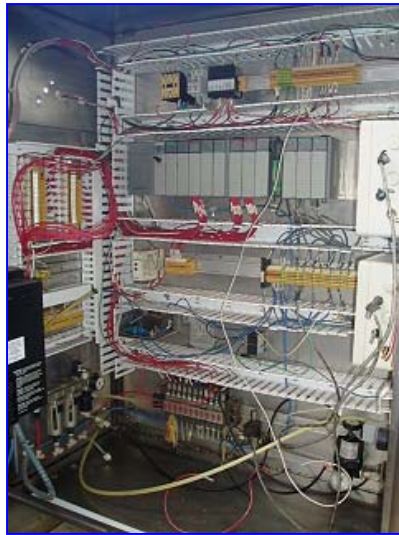
Serial No.

Niro R/O System Control Panel Enclosure. Panel is equipped with: 5/03 PLC Controller and Allen-Bradley PanelView 1200 Operator Terminal, Cat. No: 2711-KC1, S/N: E, Rev: E, electrical requirements: 115-230 VAC, 47-63 Hz, 80 W; Partlow MRC700 Temperature Chart Recorder, Model: 71120100021N3, S/N: 93K75246, electrical requirements: 115 VAC, 50/60 Hz; (2) Accurate Metering Systems Flowmeter Converters for 2 and 3 in. dia. concentrate and feed flows, Models: IZM-50A & IZM-80A, S/N's: 46877B19 & 44912C16, span: 0.6950 & 1.09933, offset: 0.0150 & -0.0350, max. flow rate: 300 gpm, digital output 1/2: 1 pls/gal, analog output: 4-20 Ma, electrical requirements: 120 V, 60 Hz; Hartmann & Brown Sensycon Metering System; and Allen-Bradley SLC 5/03 CPU. Overall dimensions: 40 in. L x 24 in. W x 50 in. H.

Hoffman Stainless Steel Enclosure features a lighting package and 4-1/2 in. dia. cooling fan. SMC Filter/Lubricator/Regulator.







Pumps

Baldor Motor, 60 hp, 3,550 rpm, 3 Ph, 460 volt. Fristam Pump, Model FM332-175, S/N FM33274005. Inlet 2 in, and outlet 2-½ in.



Baldor Motor, 75 hp, 3,550 rpm, 3 phase, 230/460 volt, 170/85 amps. Fristam Pump. Model FM312-175, S/N FM31274001. Inlet 2-½ in, and outlet 2-½ in.



