

Tomco Liquid Carbon Dioxide Storage Tank-30 tons

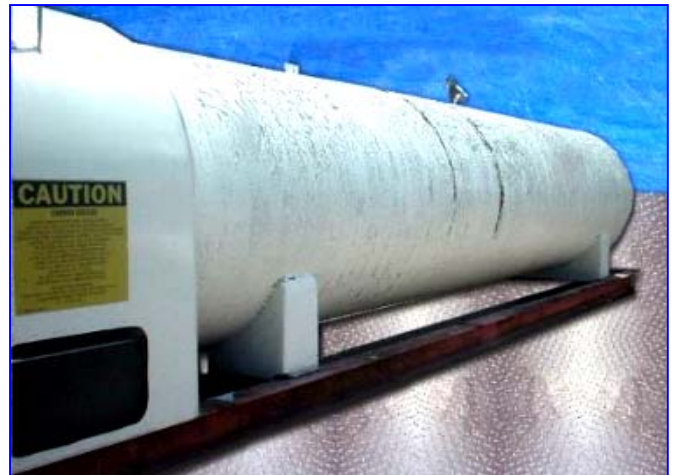
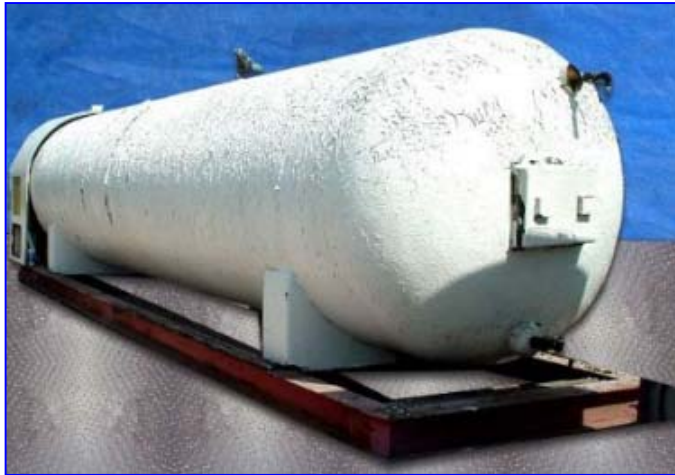
Mfg: Tomco

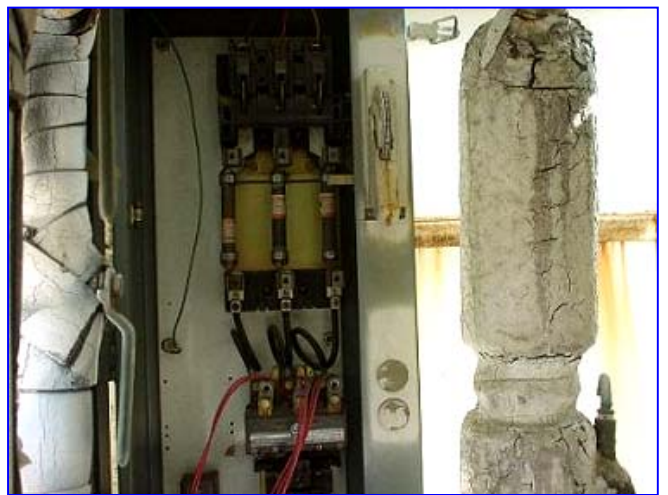
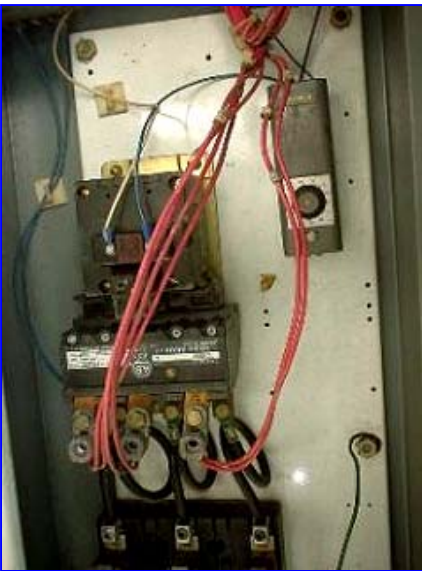
Model:

Stock No. tFEC03.

Serial No. 3080179

Tomco Liquid Carbon Dioxide Storage Tank-30 tons, S/N 3080179. Inspection sheet: N.B. No: 313, date: 11-21-80, carbon dioxide in tank: 4,000 lbs, Pressure: 300 psi, Heater press switch set: 245 on, 255 off, High temp cut-out switch set: 35 °F, Heater Voltage: 460, Suction Press set: +23 psi, Built for Airco Industrial Gases, AIG S/N: 30R-85. Tank Specs: MAWP: 350 psi at 200 °F, material: SA612, Mfg S/N: 343, yr: 1980, Nat. Board #:313, Outlet: 2 in. dia, tank dimensions: 82 in. dia x 380 in. L. Copeland Compressor, Mdl: LAHA-032E-TAD-100, S/N: CT96H03177, 460 V, 60 Hz, 6 RLA, 56 LRA, 3-phase. (2) Fans, Model K55HXPLC-5176, 13 in. dia, 1/6 hp, 460 V, 1,550 rpm, 1-phase, 50/60 Hz, 0.55 amps. Overall dimensions: 414 in. L x 90 in. W x 120 in. H.





TOMCO₂ EQUIPMENT COMPANY SYSTEMS
 3340 Rosebud Rd., Loganville, Georgia 30248

**LIQUID CARBON DIOXIDE STORAGE UNIT
 FINAL ADJUSTMENT & INSPECTION REPORT**

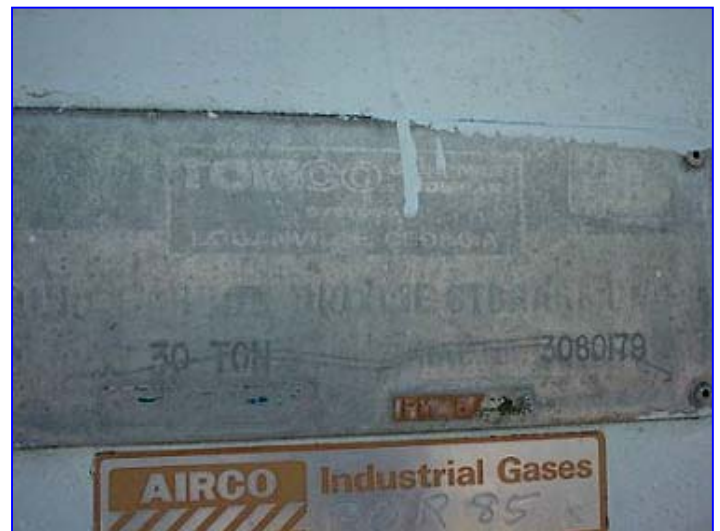
Serial No. _____ N.B. No. _____ Date _____

CARBON DIOXIDE IN TANK _____ LBS. PRESSURE _____
 HEATER PRESSURE SWITCH SET _____ ON _____ OFF
 HIGH TEMPERATURE SWITCH SET _____ ON _____ OFF
 HEATER VOLTAGE _____ AMPS - L-1 _____ L-2 _____ L-3 _____
 HEATER OPERATED _____ HRS. PRESSURE RISE _____
 REF. PRESSURE SWITCH SET _____ ON _____ OFF
 DUAL CONTROL SET _____ OFF _____ ON _____ OFF
 HEAD PRESSURE CONTROL SET FOR MIN. _____ P.S.I. _____
 SUCTION PRESSURE SET _____ P.S.I. _____
 HIGH ALARM SET _____ ON _____ OFF
 LOW ALARM SET _____ ON _____ OFF

FINAL ADJUSTMENTS MADE BY: _____

FINAL INSPECTION

CO₂ OUT TIME _____ DATE _____
 UNIT TEST RUN APPROX. _____ HOURS _____
 PRESSURE LEFT IN VESSEL _____ P.S.I. _____
 REF. PLUMBED DOWN, ALL SERVICE VALVES CLOSED _____
 WARNING TAGS INSTALLED _____
 ALL PIPES BLOWN OUT AND CHECKED FOR CLEARENESS _____
 PIPE & VALVE INSULATION _____
 PIPING SECURE FOR SHIPMENT _____
 U.G. TAGS AND NAME PLATE _____
 SERIAL NUMBER AND N.B. NUMBER CROSS CHECKED _____
 INSIDE PAINT _____
 PIPES _____



CAUTION

CARBON DIOXIDE

CONTENTS UNDER HIGH PRESSURE (300 PSIG, APPROX.)
 CONTENTS CAN CAUSE ASPHYXIATION, VENTILATION REQUIRED.
 CONTENTS CAN CAUSE EXPOSED SURFACES TO BE VERY COLD (0°F OR LOWER).
 CONTENTS CAN FORM A SOLID WHICH IS EXTREMELY COLD (-109°F, APPROX.)
 CONTENTS SHOULD NOT BE PUT INTO OTHER CONTAINERS.
 NOT DESIGNED FOR LIQUID CARBON DIOXIDE USE.
 DO NOT ENTER WITHOUT VENTILATING THOROUGHLY.
 DO NOT ADJUST OR TAMPER WITH SAFETY RELIEF DEVICES.
 OPERATE VALVES AND OTHER APPENDAGES SLOWLY.
 DO NOT FILL ABOVE 95% OF TOTAL WATER CAPACITY.
 DO NOT APPLY HEAT TO VESSEL.
 USE ONLY APPROPRIATE PIPING DESIGNED FOR
 HIGH PRESSURE LIQUID CARBON DIOXIDE SERVICE.

FOR ADDITIONAL INFORMATION
 PLEASE REFER TO THE MATERIAL SAFETY DATA SHEETS (MSDS) OR CALL
 LIQUID CARBONIC CARBON DIOXIDE CORPORATION
 51 - 312-855-2500

L.C. FORM 51-03403