



SUBMITTAL DATA

1 ¼ x 1 ½ x 7 PFe300 & 1 ½ x 2 x 7 PFe300
1750 RPM BASE MOUNTED
END SUCTION CENTRIFUGAL PUMPS

1 1/4 X 1 1/2 X 7 PFe300

PUMP MODEL			MOTOR H.P.	MOTOR FRAME SIZE	PUMP WEIGHT	POWER FRAME	BASE NO.	DIMENSIONS (INCHES)								
DISC. SIZE	SUCT. SIZE	FULL IMP.						D	X	Y	Z	CP	DD	C	HT	HL
1 1/4 X 1 1/2 X 7 PFe300			1	143 T	164	1	1	7	6	3.69	4.75	18.09	4.88	13.31	0.75	11
			1 1/2, 2	145 T	172									14.19		
			3	182 T	195									18.05		

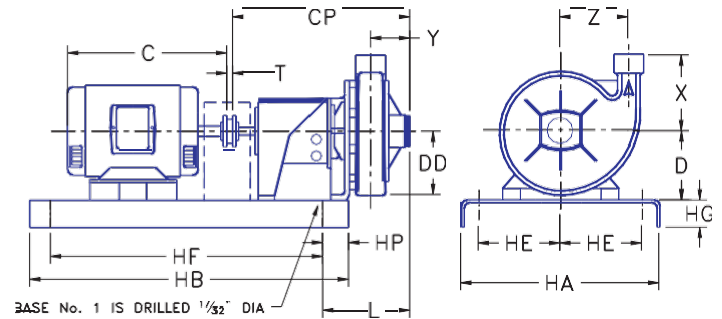
1 1/2 X 2 X 7 PFe300

PUMP MODEL			MOTOR H.P.	MOTOR FRAME SIZE	PUMP WEIGHT	POWER FRAME	BASE NO.	DIMENSIONS (INCHES)								
DISC. SIZE	SUCT. SIZE	FULL IMP.						D	X	Y	Z	CP	DD	C	HT	HL
1 1/2 X 2 X 7 PFe300			1	143 T	164	1	1	7	6	3.69	4.75	18.09	4.88	13.31	0.75	11
			1 1/2, 2	145 T	172									14.19		
			3	182 T	195									18.05		

ALL MODELS

MATERIALS OF CONSTRUCTION

DESCRIPTION	STANDARD BRONZE FITTED CONSTRUCTION	OPTIONS
CASING	CAST IRON	
CASING WEAR RINGS		BRONZE
IMPELLER	BRONZE	
POWER FRAME	CAST IRON	
POWER FRAME SHAFT	STEEL	300 SERIES S.S.
SHAFT SLEEVE	BRASS	316 S.S.
BRACKET	CAST IRON	
POWER FRAME BEARINGS	ANTI-FRICTION BALL	
LUBRICATION	GREASE	
MECHANICAL SEAL	NI-RESIST	SILICON CARBIDE TUNGSTEN CARBIDE CERAMIC
CASING FLANGES	125 ASA DRILLING	
SEAL FLUSH	INTERNAL	EXTERNAL BY-PASS
COUPLING GUARD	CLOSED END	



BASE DIMENSIONS

NO	WEIGHT	HA	HB	HE	HF	HG	HP
1	38	12	30	4.75	24.25	3	5

MAXIMUM OPERATING CONDITIONS

	NI-RESIST (STANDARD) CERAMIC	SILICON CARBIDE TUNGSTEN CARBIDE
WORKING TEMPERATURE	250°F	300°F
WORKING PRESSURE	175 PSI	175 PSI

Engineer _____
 Architect _____
 Sales Rep. _____
 Contractor _____

Liquid _____ RPM _____
 H.P. _____ B.H.P. _____
 Volts _____
 Enclosure _____