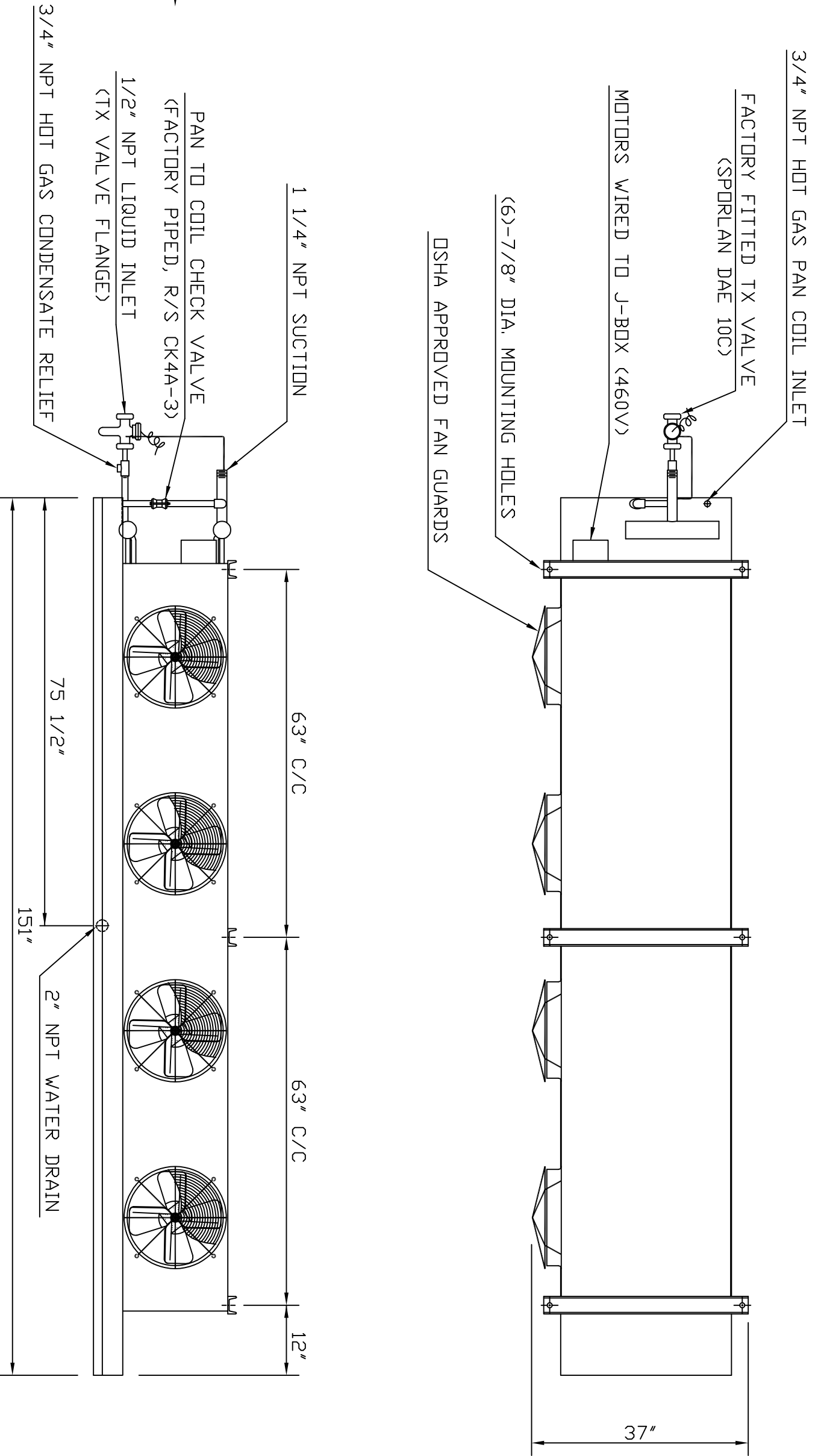
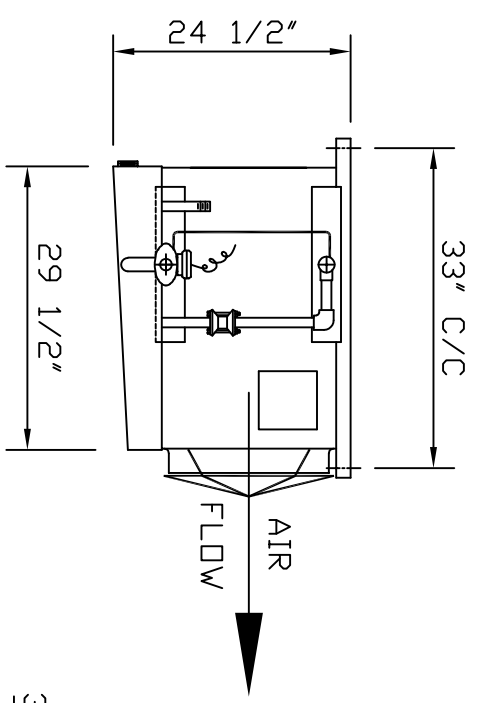


**MOTOR OVERLOAD PROTECTION SHOULD BE SIZED AFTER ROOM PULL-DOWN OR ESTIMATED BY THE FOLLOWING CHART. MOTORS ON AIR UNITS IN COLD ROOMS GENERALLY DRAW GREATER THAN NAME-PLATE AMPS.

AIR TEMP °F	+20°	0°	-20°	-40°
AMP & HP MULTIPLIER	1.11	1.16	1.21	1.27



QUANTITY	DESIGN CAPACITY	AIR FLOW	COIL TEMP.	ROOM TEMP.	REFRIG-ERANT	REFRIG-FEED
1	5,761 BTUH/°TD	10,600 CFM	-22 °F	-10 °F	R-717	DX
MOTOR QTY/HP	RPM	MOTOR SPEED	NAMEPLATE CURRENT	ENCLOSURE	INTERNAL OVERLOAD	MOTOR FRAME
4 / 1/3	1150	230 / 3/60 (460)	**AMPS 1.8 (9)	TEA0	YES	56
FIN SPACING	COIL SURFACE	COIL VOLUME	APPROX. WEIGHT	SOUND LEVEL		
FPI 3	Ft² 1,638	Ft³ 1.6	LBS. 1,900	(DBA@10')		

COIL TUBING: 3/4" O.D., 1" O.D. x 0.060 MIN. WALL ASTM 214 STEEL

COIL FINNS: 30 GA. CARBON STEEL _____

COIL & FRAME HOT DIP GALVANIZED AFTER FABRICATION

HOUSING: GALVANIZED STEEL, STAINLESS STEEL

DRAIN PAN: GALVANIZED STEEL, STAINLESS STEEL

FANS: PLAIN, INSULATED, HEATED

CAST ALUMINUM 18" DIA. 36" DIA.

MILD GALV. BLADES & STEEL HUB 24" DIA. 42" DIA.

DIRECT DRIVE, BELT DRIVE, 30 DIA. 16" DIA.

PIPING CONNECTIONS: RIGHT HAND LEFT HAND BACK

AS SHOWN OPPOSITE AS SHOWN

NOTE: ACTUAL DIMENSIONS SHOWN MAY VARY SLIGHTLY DUE TO MANUFACTURING PROCESSES AND TOLERANCES

CONFIDENTIAL PROPERTY OF		VILTER™ Since 1867	
VILTER MANUFACTURING CORPORATION CUDAHY, WISCONSIN 53110-8904 TELEPHONE NO. (414) 744-0111		DRAWN BY: DGB	
TITLE: MODEL VLP 16-83-1/3-XA-HGP		APPROVED BY: _____	
CUSTOMER: AMMONIA REFRIGERATION SERVICE		SCALE: NTS	
ORDER NO. K-61052		DATE: 5/6/04	
DRAWING / SERIAL NO. C 1640 CD			

SYM	REVISIONS	APPR. BY	DATE