

NOR-LAKE INCORPORATED
727 Second Street
P.O. Box 248
Hudson, Wisconsin 54016

800-955-5253
715-386-2323
800-388-5253 PARTS
715-386-6149 FAX
www.norlake.com



KOLD LOCKER™ WALK-INS



Coolers, Freezers and Combination Cooler/Freezers In Stock for SAME DAY SHIPMENT

STANDARD FEATURES

- **STANDARD MODELS SHIP THE SAME DAY**
- Coolers, freezers and combination cooler/freezers
- Sizes from 4' x 5' to 8' x 20'
- Three heights: 6'7" & 7'7" with floor; 7'4" floorless
- Indoor or outdoor models
- Four temperatures: +38°F., +35°F., -10°F., -20°F.
- Capsule Pak™ refrigeration system (ceiling or wall mount)
- Air-cooled condensing unit
- Automatic condensate vaporizer. No drain line required on indoor units
- Time clock provided for automatic defrost on both coolers and freezers.
- 26 gauge embossed galvanized with aluminum coating on all surfaces except interior floor
- Smooth aluminum interior floor (on models with floor)
- Floorless models supplied with NSF listed vinyl sealers
- **Full 4" thick panels foamed-in-place with HFC-134a polyurethane insulation which is CFC and HCFC free**
- 26" wide, self-closing door
- Two heavy duty cam-lift hinges per door (Hydraulic closer)
- Posi-close door closer
- **Deadbolt locking handle with independent key/padlock feature and inside safety release**
- Magnetic gasket
- Dial thermometer
- Floor double sweep gasket
- Perimeter heater wire
- Vapor-proof light with constant burning night light feature
- Switch and pilot light
- **Registered by UL to ISO 9001**
- NSF, UL flame spread 25 on all panels; UL and CSA electrical listing on door sections
- UL and CSA electrical listing on complete Capsule Pak™ refrigeration systems
- City of New York (MEA) listed
- City of Houston listed
- LA County listed
- ~~California State listed~~

STANDARD FEATURES

- Oregon State listed
- USDA accepted
- **Fifteen year panel warranty**
- Ninety day labor warranty
- One year parts warranty

INDOOR MODELS:

- Hot gas condensate vaporizer

OUTDOOR MODELS:

- White membrane roof and trim
- Refrigeration hood
- Door hood (optional)
- -20°F. ambient controls

OPTIONAL FEATURES*

- U-shaped shelving system
- Floor treadplate kit
- Exterior ramp
- Condensing unit air deflector kit
- Heater kit for cooler located outdoors in below 32°F. ambient
- Leak detector/alarm (may be a requirement in some areas)
- Transformer kit
- Three phase electrical
- Remote Capsule Pak™ refrigeration systems
- Five year compressor warranty
- One year labor/service warranty



Nor-Lake, Inc.
Registered to ISO 9001
File No. A3204

KOLD LOCKER™ COOLERS, FREEZERS & COMBINATIONS

SPECIFICATION

GUIDE

*Most options are available two weeks from receipt of order. Please contact us for specific questions.

DOOR

Door sections manufactured at Nor-Lake are factory tested to assure proper fit, performance and alignment. All doors feature a stepped profile design that serves as a barrier to air flow which results in an energy efficient door system.

Each Kold Locker™ walk-in compartment is equipped with a 26" wide door. The height of the door opening varies with the series of Kold Locker™ walk-in ordered. The 45 Series has a 59" high door, the Standard Series (6'7" high) has a 66" high door and the 74 and 77 Series Kold Locker™ walk-ins have a 78" high door. The door is self-closing, flush mounted, infitting and constructed to incorporate heavy duty, molded ABS breaker which is permanently foamed-in-place.

Doors are available with right or left side hinges and include two cam-lift hinges, magnetic gasket, double sweep gasket, Posi-close door closer, NL 9800 deadbolt locking handle with independent key/padlock feature and inside safety release. The doors are prehung in a four foot wide frame panel which is equipped with replaceable perimeter heater wire, magnetic stainless steel trim, 2-1/2" dial thermometer, vapor-proof light fixture with constant burning interior night light, and switch with exterior pilot indicator light.

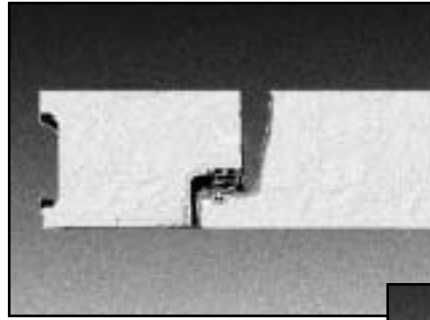
The door section is completely pre-wired within concealed conduit inside the door frame panel. 115/60/1 electrical is field wired to a junction box which is surface mounted on the interior frame above the vapor proof light fixture.

Hinges and door handle are mounted to 1/2" synthetic insulated tapping plates. Each door section is complete with a heavy gauge galvanized steel heated threshold.

FLOOR CONSTRUCTION

Floor panels (when supplied) are similar in construction to the wall panels except they are made to withstand uniformly distributed floor loads of up to 600 pounds per square foot. The interior floor metal is smooth aluminum.

The 74 Series, floorless models, are supplied with a patented vinyl floor sealer to stop conductivity at floor level. This unique sealer sits flat on existing floors and fits tightly against the interior/exterior wall panels. The walk-in wall panel is supported on the shoulder of the sealer so the foam edge is free of compressing weight. The vinyl floor sealer is NSF listed.



DOORS FEATURE A STEPPED PROFILE DESIGN

VAPOR PROOF LIGHT FIXTURE



POSI-CLOSE DOOR CLOSER



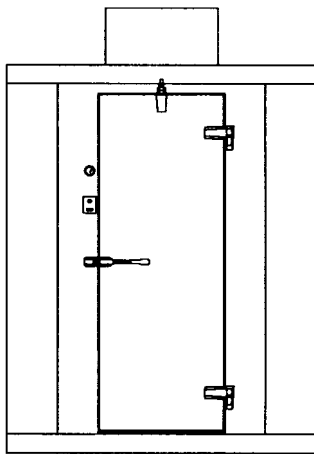
DEADBOLT LOCKING HANDLE

NL 9800 deadbolt locking handle with independent key/padlock feature and inside safety release.



FLOORLESS MODELS ARE SUPPLIED WITH A PATENTED VINYL FLOOR SEALER.

REMOTE CAPSULE PAK™ REFRIGERATION SYSTEMS



OPTIONAL FLOOR TREAD PLATE SPECIFICATIONS

Floor Tread Plate Kits of 1/8" high tensile strength aluminum diamond tread plate are precut to fit interior floor space of any Kold Locker™ model. Offers superior corrosion resistance and provides additional protection to the interior floor surface for applications requiring heavy product load. Installation of tread plate floor kit is completed by the equipment installer.

OPTIONAL EXTERIOR RAMP

Exterior ramp with overall dimensions of 36 wide and extends 25 1/2" from the front of the walk-in. The ramp surface will rise at a 8 degree angle from the finished customer floor to the 4" height of the interior walk-in floor. Ramp and door threshold are designed to allow the ramp to removable when not in use.

OPTIONAL HEATER KIT

When a Kold Locker™ cooler is installed outdoors, in a location where the ambient temperature can be below freezing for extended periods of time, it may be necessary to add heat to the interior compartment to avoid the freezing of product. In these cases the Kold Locker™ cooler can include a heater kit which consists of a 2 1/2" deep x 30" long base board heater. The heater is 120 volt, 750 watt, and draws 6.5 AMPS. The base board heater shall be field installed to the interior wall, at floor level, and located in an area which doesn't interfere with product storage. A medium temperature thermostat is included with the kit and is wired to the base board heater and set to the desired cooler temperature. It is recommended that the heater system is wired to a separate electrical breaker which can be turned off in the warm seasons of the year. This will eliminate any chance of accidental movement of the thermostat adjustment and possible spoiling of product.

Remote Capsule-Pak™ Refrigeration Systems

		CONDENSING UNIT					EVAPORATOR UNIT					
		Refrig.		Min. Circuit		Max.	Defrost		Evap	Min. Circuit		Max.
Model Number	REF.	Opening Size	Voltage	Cond Amps	Amps	Fuse Size	Voltage	Amps	Amps	Amps	Amps	Fuse Size
RCPB0501C-A	R22	SMALL	115/60/1	15	18.4	30	115/60/1	N/A	1	1.3	15	
RCPB050DC-A	R404	SMALL	115/60/1	10.7	13.2	20	115/60/1	N/A	1	1.3	15	
RCPB0751C	R22	MEDIUM	208-230/60/1	8	9.8	15	230/60/1	N/A	0.9	1.1	15	
RCPB075DC	R404	MEDIUM	208-230/60/1	8.8	10.7	15	230/60/1	N/A	1.2	1.5	15	
RCPB100DC	R404	LARGE	208-230/60/1	12.1	14.9	25	230/60/1	N/A	1	1.3	15	
RCPF060DC	R404	MEDIUM	208-230/60/1	8.8	10.7	15	115/60/1	13.3	1.8	13.3	15	
RCPF075DC	R404	MEDIUM	208-230/60/1	6.3	7.6	15	115/60/1	13.3	1.8	13.3	15	
RCPF100DC	R404	LARGE	208-230/60/1	8	9.7	15	230/60/1	8.7	1	8.7	15	
RCPF150DC	R404	LARGE	208-230/60/1	12.5	15	20	230/60/1	8.7	1	8.7	15	
WALL MOUNT SYSTEMS												
RCPB050DW	R404	SMALL	115/60/1	10.7	13.2	20	115/60/1	N/A	1.8	2.3	15	
RCPB075DW	R404	LARGE	208-230/60/1	8.8	10.7	15	230/60/1	N/A	1	1.3	15	
RCPF060DW	R404	SMALL	208-230/60/1	8.8	10.7	15	115/60/1	6.7	1.3	6.7	15	
RCPF075DW	R404	SMALL	208-230/60/1	6.3	7.6	15	115/60/1	8.3	1.3	8.3	15	
RCPF100DW	R404	LARGE	208-230/60/1	8	9.7	15	230/60/1	7.1	1	7.1	15	
RCPF150DW	R404	LARGE	208-230/60/1	12.5	15	20	230/60/1	7.1	1	7.1	15	

These systems include ambient controls, weather-proof hoods, precharged systems with quick connects for simple field connections to precharged lines of your choice. Consult factory for application, pricing and ship date availability.

WALK-IN SPECIFICATIONS

Kold Locker™ walk-ins are built of modular panels, and are insulated with foamed-in-place HFC-134a polyurethane insulation which is CFC and HCFC free. Each panel is designed to ensure ease of installation, long term reliability and high insulating efficiency.

- A. All panels are manufactured with male and female mating rails to ensure proper alignment during installation. The polyurethane insulation wraps around the return bend metal seams on both sections to create a lightweight panel of exceptional strength and durability. All panels are a full four (4) inches thick and provide a superior insulating value.
- B. The foamed-in-place cam locking fasteners ensure an airtight seal for maximum energy efficiency.
- C. Kold Locker™ panel gaskets around the outer perimeter of the panel are continuous, without cuts or breaks at corners. The Nor-Lake patented gasket design provides a foamed-in-place gasket as an integral part of the panel. Gaskets cannot fall off or pull off during shipment or installation.

- D. Panels lock together tightly to assure an energy efficient walk-in.
- E. Edge caps for ends of floor and ceiling panels are foamed-in-place rather than overlapped or mechanically fastened. Edge caps cannot come loose, and they stay in place through the life of the walk-in.

- F. Panel Finishes: Interior and exterior complete to be 26 gauge embossed galvanized with aluminum coating. Models supplied with a floor will include a smooth aluminum interior floor surface.

Insulation
Panels to be four (4) inches thick, metal clad and foamed-in-place with HFC-134a polyurethane insulation which is CFC and HCFC free.

New Sizes:

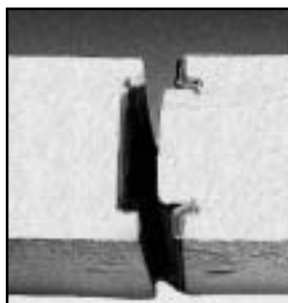
Mini Kold Locker™ Walk-ins
3'6" x 6'0" x 6'7" and
3'6" x 7'0" x 6'7"

Similar floor space as 3 door reach-in. Modular-easy to get into existing building, through doors and hallways. 20%-30% more capacity than 3 door reach-in.

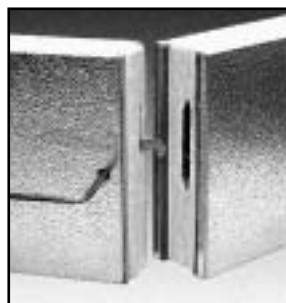
Expanded Kold Locker™ Coolers:

Now three larger coolers are in stock for Same Day Shipment:

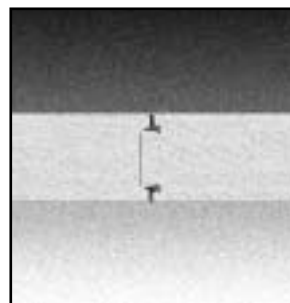
**6' x 14',
8' x 12',
8' x 14' Single Compartment**



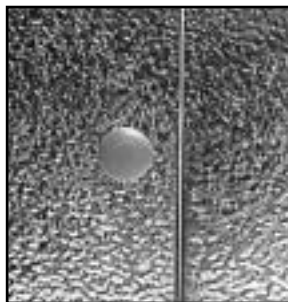
A.



B.



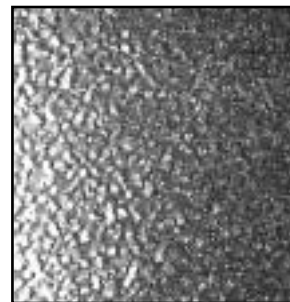
C.



D.



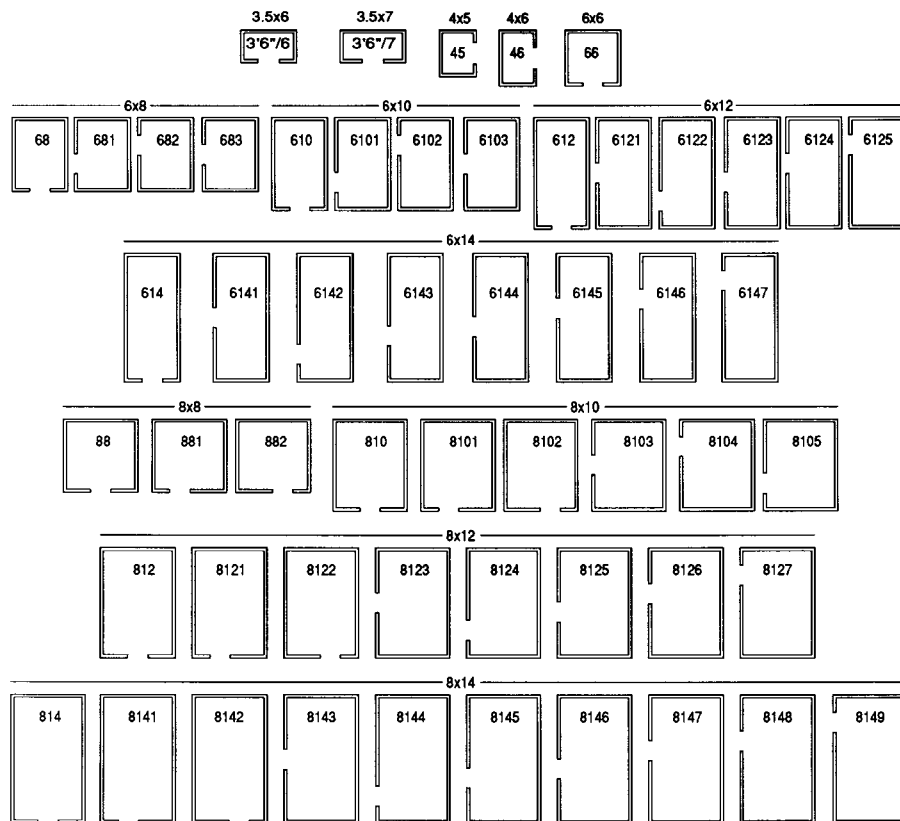
E.



F.

Kold Locker™ Single Room Coolers or Freezers

Floor Plan Layouts





Capsule Pak™ Refrigeration System Specifications

Capsule Pak™ refrigeration systems consist of a unitized system which is factory assembled, wired, charged, tested and fully equipped for insertion into a factory prepared walk-in opening. The Capsule Pak™ system has a flush coil which keeps all components outside, allowing more storage inside. Models shall be available for wall or ceiling mounting for use on indoor or outdoor installations. Models are available for interior compartment design temperatures of +38° F., +35° F., -10° F., and -20° F. Installation is fast and easy. No plumbing required on indoor units.

The Capsule Pak™ system evaporator section shall consist of an integral factory assembled component of the complete Capsule-Pak™ refrigeration system. The evaporator section shall be designed as to be located entirely outside the walk-in with no intrusions into the refrigerated space. The evaporator enclosure shall be constructed utilizing foamed-in-place HFC-134a polyurethane insulation and be equipped with a removable, gasketed access cover.

All indoor Capsule Pak™ models shall be equipped with a discharge gas condensate vaporizer which requires no plumbing. All outdoor Capsule Pak™ models shall be equipped with low ambient controls consisting of crankcase heater, flooded condenser head pressure control and pumpdown cycle.

All standard Capsule Pak™ refrigeration systems are stocked for same day shipment.

All standard Capsule Pak™ refrigeration systems shall be listed, approved or certified by U.L. and C.S.A. (Canadian Standards Association).

Note: Allow a minimum of 6" clearance above the Capsule Pak™ system .

Capsule-Pak™ Refrigeration Systems

Model Number	Horsepower	Volts/Hz/Ph	Defrost	Total System	Minimum	Maximum
			AMPS	AMPS	Circuit AMPS	Fuse Size
CPBO501C-A	1/2	115/60/1	N/A	11.0	11.6	20
CPB0751C	3/4	208-230/60/1	N/A	8.7	10.5	15
CPBO501CO	1/2	115/60/1	N/A	16.4	19.8	30
CPB0751CO	3/4	208-230/60/1	N/A	9.1	10.9	15
CPB050DC-A	5/8	115/60/1	N/A	11.7	14.2	20
CPB075DC**	7/8	208-230/60/1	N/A	10.0	11.9	15
CPB100DC	1	208-230/60/1	N/A	13.1	15.9	25
CPF060DC	5/8	208-230/60/1	13.4	10.7	13.4	20
CPF075DC**	3/4	208-230/60/1	13.4	8.2	13.4	15
CPF100DC	1	208-230/60/1	8.8	9.1	10.8	15
CPF150DC	1 1/2	208-230/60/1	8.8	13.6	16.1	25
CPX100DC**	1	208-230/60/1	13.4	9.9	13.4	15
CPX150DC*	1 1/2	208-230/60/1	12.6	13.6	16.1	25
CPX151DC*	1 1/2	230/60/1	12.7	13.7	16.2	25
CPB050DCO	5/8	115/60/1	N/A	12.1	14.6	20
CPB075DCO**	7/8	208-230/60/1	N/A	10.2	12.1	15
CPB100DCO	1	208-230/60/1	N/A	13.3	16.1	25
CPF060DCO	5/8	208-230/60/1	13.8	11.1	13.8	20
CPF075DCO**	3/4	208-230/60/1	13.5	8.3	13.5	15
CPF100DCO	1	208-230/60/1	9.0	9.3	11.0	15
CPF150DCO	1 1/2	208-230/60/1	9.0	13.8	16.3	25
CPF151DCO	1 1/2	230/60/1	9.0	13.9	16.4	25
CPB050DW	1/2	115/60/1	N/A	12.5	15.0	25
CPB075DW**	3/4	208-230/60/1	N/A	9.8	11.7	15
CPF060DW	5/8	208-230/60/1	6.7	10.1	12.0	15
CPF075DW**	3/4	208-230/60/1	8.3	7.6	8.9	15
CPF100DW	1	208-230/60/1	7.1	9.0	10.7	15
CPF150DW	1 1/2	208-230/60/1	7.1	13.5	16.0	25
CPX100DW**	1	208-230/60/1	8.3	9.3	11.0	15
CPX150DW	1 1/2	208-230/60/1	7.1	13.5	16.0	25
CPX151DW	1 1/2	230/60/1	7.1	13.6	16.1	25
CPB050DWO	1/2	115/60/1	N/A	13.1	15.6	25
CPB075DWO**	3/4	208-230/60/1	N/A	10.1	12.0	15
CPF060DWO	5/8	208-230/60/1	7.0	10.4	12.3	20
CPF075DWO**	3/4	208-230/60/1	8.6	7.9	9.2	15
CPF100DWO**	1	208-230/60/1	7.4	9.3	11.0	15
CPF150DWO**	1 1/2	208-230/60/1	7.4	13.8	16.3	25
CPF151DWO**	1 1/2	230/60/1	7.4	13.9	16.4	25

NOTE: Each door section requires separate 115/60/1 hook up and draws 2.3 AMPS.

*Hot gas defrost

**These systems have 115 volt fan motors and/or drain line heaters which will require 115/60/1 service
Subject to change without notice

PHYSICAL SPECIFICATIONS

OUTDOOR MODELS:

All Kold Locker™ walk-ins installed outdoors include a weather protection kit consisting of: One piece, 35 mill, white membrane roof material which requires no seaming or gluing to the top of the Kold Locker™ walk-in ceiling panels.

Plastic strips for flashing the membrane roof material to the side of the Kold Locker™ walk-in wall panels are included.



Trim is secured to the Kold Locker™ wall panels with self drilling and self tapping TEK screws. In applications where the Kold Locker™ walk-in is installed next to a building, the trim can be used to secure the turned up membrane roof material to the building wall, with fasteners supplied by the equipment installer. Above door rain hoods are an option and should be included on installations where the door panels are exposed to the outdoor weather.



Trim is secured to the Kold Locker™ wall panels with self drilling and self tapping TEK screws. In applications where the Kold Locker™ walk-in is installed next to a building, the trim can be used to secure the turned up membrane roof material to the building wall, with fasteners supplied by the equipment installer. Above door rain hoods are an option and should be included on installations where the door panels are exposed to the outdoor weather.

Trim can be used to secure the turned up membrane roof material to the building wall, with fasteners supplied by the equipment installer. Above door rain hoods are an option and should be included on installations where the door panels are exposed to the outdoor weather.

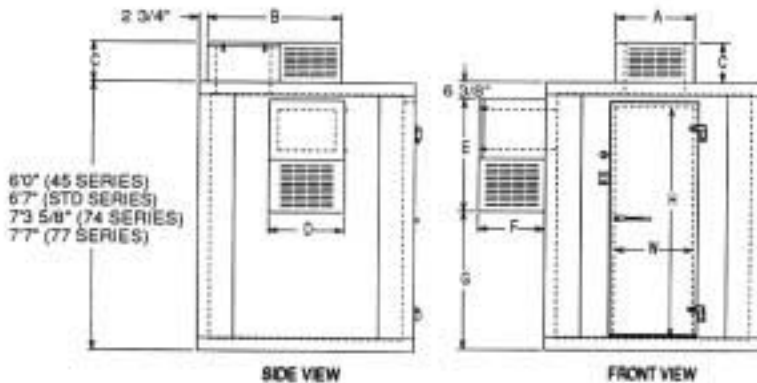
APPROVALS:

Kold Locker™ walk-in construction is approved by the National Sanitation Foundation and shall have the N.S.F. seal on the door section. Walk-in panels shall have a U.L. flame spread rating of 25. The door section is U.L. and C.S.A. listed for electrical safety.

- Registered by UL to ISO 9001
- City of New York (MEA) listed
- City of Houston listed
- LA County listed
- California State listed
- Oregon State listed
- USDA accepted



Nor-Lake, Inc.
Registered to ISO 9001
File No. A3204



Door Opening Sizes

W	H	Model
26"	59"	45 Series
26"	66"	STD Series
26"	78"	74 Series
26"	78"	77 Series

6'-7" HIGH

UNIT	INTERIOR CUBAGE
KL45(6'-0" High)	77
KL46	105
KL66	168
KL68	231
KL610	295
KL612	357
KL614	420
KL88	318
KL810	404
KL812	490
KL814	578

7'-4" HIGH & 7'7" HIGH

UNIT	INTERIOR CUBAGE
KL7745	100
KL7746	123
KL7766	196
KL7768	270
KL77610	344
KL77612	418
KL77614	490
KL7788	372
KL77810	473
KL77812	574
KL77814	675

Capsule-Pak™ Refrigeration Systems

"G" DIMENSION

Model Number	"A"	"B"	"C"	"D"	"E"	"F"	45 Series	Std. Series	74 Series	77 Series
CPB0501C-A	26"	44 1/2"	13 1/2"	N/A	N/A	N/A	N/A	N/A	N/A	N/A
CPB0751C	37"	48 1/4"	13 1/2"	N/A	N/A	N/A	N/A	N/A	N/A	N/A
CPB0501CO	32"	44 1/2"	14 7/8"	N/A	N/A	N/A	N/A	N/A	N/A	N/A
CPB0751CO	43"	48 1/4"	14 7/8"	N/A	N/A	N/A	N/A	N/A	N/A	N/A
CPB050DC-A	26"	44 1/2"	13 1/2"	N/A	N/A	N/A	N/A	N/A	N/A	N/A
CPB075DC	37"	48 1/4"	13 1/2"	N/A	N/A	N/A	N/A	N/A	N/A	N/A
CPB100DC	34 1/2"	59"	21 1/4"	N/A	N/A	N/A	N/A	N/A	N/A	N/A
CPF060DC	39"	44 1/2"	14 1/2"	N/A	N/A	N/A	N/A	N/A	N/A	N/A
CPF075DC	39"	48 1/4"	14 1/2"	N/A	N/A	N/A	N/A	N/A	N/A	N/A
CPF100DC	36 1/2"	59"	21 1/4"	N/A	N/A	N/A	N/A	N/A	N/A	N/A
CPF150DC	36 1/2"	59"	21 1/4"	N/A	N/A	N/A	N/A	N/A	N/A	N/A
CPX100DC	39"	48 1/4"	14 1/2"	N/A	N/A	N/A	N/A	N/A	N/A	N/A
CPX150DC	36 1/2"	59"	21 1/4"	N/A	N/A	N/A	N/A	N/A	N/A	N/A
CPX151DC	36 1/2"	59"	21 1/4"	N/A	N/A	N/A	N/A	N/A	N/A	N/A
CPB050DCO	32"	44 1/2"	14 7/8"	N/A	N/A	N/A	N/A	N/A	N/A	N/A
CPB075DCO	43"	48 1/4"	14 7/8"	N/A	N/A	N/A	N/A	N/A	N/A	N/A
CPB100DCO	40 1/2"	59"	22 7/8"	N/A	N/A	N/A	N/A	N/A	N/A	N/A
CPF060DCO	43"	44 1/2"	15 7/8"	N/A	N/A	N/A	N/A	N/A	N/A	N/A
CPF075DCO	43"	48 1/4"	15 7/8"	N/A	N/A	N/A	N/A	N/A	N/A	N/A
CPF100DCO	40 1/2"	59"	22 7/8"	N/A	N/A	N/A	N/A	N/A	N/A	N/A
CPF150DCO	40 1/2"	59"	22 7/8"	N/A	N/A	N/A	N/A	N/A	N/A	N/A
CPF151DCO	40 1/2"	59"	22 7/8"	N/A	N/A	N/A	N/A	N/A	N/A	N/A
CPB050DW	N/A	N/A	N/A	25 1/4"	38 1/4"	22 1/4"	27 3/8"	34 3/8"	43"	46 3/8"
CPB075DW	N/A	N/A	N/A	44 1/8"	45"	30"	N/A	27 5/8"	36 1/4"	39 5/8"
CPF060DW	N/A	N/A	N/A	25 1/4"	38 1/4"	22 1/4"	27 3/8"	34 3/8"	43"	46 3/8"
CPF075DW	N/A	N/A	N/A	25 1/4"	38 1/4"	22 1/4"	N/A	34 3/8"	43"	46 3/8"
CPF100DW	N/A	N/A	N/A	44 1/8"	45"	30"	N/A	27 5/8"	36 1/4"	39 5/8"
CPF150DW	N/A	N/A	N/A	44 1/8"	45"	30"	N/A	27 5/8"	36 1/4"	39 5/8"
CPX100DW	N/A	N/A	N/A	25 1/4"	38 1/4"	22 1/4"	N/A	34 3/8"	43"	46 3/8"
CPX150DW	N/A	N/A	N/A	44 1/8"	45"	30"	N/A	27 5/8"	36 1/4"	39 5/8"
CPX151DW	N/A	N/A	N/A	44 1/8"	45"	30"	N/A	27 5/8"	36 1/4"	39 5/8"
CPB050DWO	N/A	N/A	N/A	25 1/4"	42"	22 3/4"	27 3/8"	34 3/8"	43"	46 3/8"
CPB075DWO	N/A	N/A	N/A	44 1/8"	48 3/4"	30 1/2"	N/A	27 5/8"	36 1/4"	39 5/8"
CPF060DWO	N/A	N/A	N/A	25 1/4"	42"	22 3/4"	27 3/8"	34 3/8"	43"	46 3/8"
CPF075DWO	N/A	N/A	N/A	25 1/4"	42"	22 3/4"	N/A	34 3/8"	43"	46 3/8"
CPF100DWO	N/A	N/A	N/A	44 1/8"	48 3/4"	30 1/2"	N/A	27 5/8"	36 1/4"	39 5/8"
CPF150DWO	N/A	N/A	N/A	44 1/8"	48 3/4"	30 1/2"	N/A	27 5/8"	36 1/4"	39 5/8"
CPF151DWO	N/A	N/A	N/A	44 1/8"	48 3/4"	30 1/2"	N/A	27 5/8"	36 1/4"	39 5/8"

*Consideration must be given to accessibility for service & free condenser air flow. Consult Factory.

SHELVING KITS

Shelving kits specifically designed for each Kold Locker™ walk-in configuration are offered as an optional extra. These kits are shipped with the Kold Locker™ walk-in and Capsule Pak™ refrigeration system so that all necessary components are at your location promptly when you need them. The shelving sets are coded to correspond to the Kold Locker™ walk-in configuration ordered and are offered in either three or four tier.

Two Types of Shelving Systems Are Available From Nor-Lake.

A. Green Kote™ Shelving-Green epoxy coated shelves. 15 year guarantee against corrosion.

B. Nor-Lake Standard Zinc Protoxy Shelving.

Shelving system construction is identical. Select the shelving FINISH of your choice.

Shelving posts are engineered for maximum strength. Shelves are adjustable on 2" centers. All shelves are N.S.F. listed and are zinc coated with a heavy layer of Protoxy for a maximum life span under humid storage conditions. Special clips are utilized to gain the maximum square footage of storage space for each Kold Locker™ model. 14", 18" and 24" wide shelves are used as required for maximum storage capacity in each set. This wire shelving is ideal for storage of all refrigerated or frozen products.

SHELVES:

Shelves to have #9 (.148") gauge crosswires spaced 3/4" on centers with crossbraces 1/4" (.192") minimum of 4 3/4" on center.

Shelf Frames

Channel to be 9/16" x 1" x .075" thick.

Shelf Collars

A round tapered 1-5/16" high steel collar to be welded at each corner.

FINISHES

A. Green Kote™: Electrostatically applied green baked epoxy over cold rolled steel and brite basic wire. Thickness: 4-7 mill.

B. Chrome Kote™: Plated quality wire and steel. Surface nickel chrome plated.

POSTS

Posts to be .062" thick 1" O.D. round tubing notched every 2" on each corner of the post.

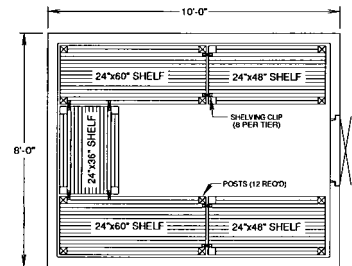
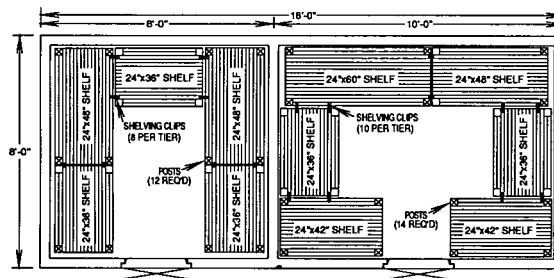
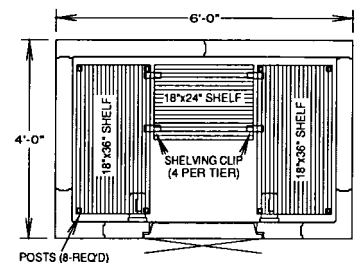
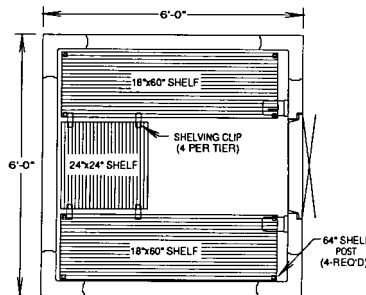
POST LEVELER

Installed on the bottom of each post is nylon housing for a steel leveler 3/8"-16 x 1-3/4".

FINISHES

A. Green Kote™: Electrostatically applied green baked epoxy over green zinc steel and brite basic wire. Thickness: 2-3 mill.

B. Chrome Kote™: Plated quality wire and steel. Surface nickel chrome plated.



SMALL BUSINESS & WOMAN OWNED



Registered to ISO 9001
File No. A3204

Nor-Lake, Incorporated
727 Second Street
Hudson, Wisconsin 54016
800-955-5253
715-386-2323
800-388-5253 PARTS
715-386-6149 FAX
www.norlake.com
Part No. 079297
7/01



KOLD LOCKER™ WALK-IN SIZES AVAILABLE

SINGLE COMPARTMENT SIZES

The **45 Series** is available in one size which is 4' wide x 5' long x 6'-0" high. This model is supplied with a walk-in floor.

The **Standard Series** of Kold Locker™ walk-ins are all 6'-7" high and are all supplied with a floor. The sizes available are as follows: 4' wide x 6' long, 6' wide x 6' long, 6' wide x 8' long, 6' wide x 10' long, 6' wide x 12' long, 8' wide x 8' long, and 8' wide x 10' long.

The **77 Series** of Kold Locker™ walk-ins are all 7'-7" high and are all supplied with a floor. The sizes available are as follows: 6' wide x 6' long, 6' wide x 8' long, 6' wide x 10' long, 6' wide x 12' long, 8' wide x 8' long, and 8' wide x 10' long.

The **74 Series** of Kold Locker™ walk-ins are all 7'-3 5/8" high and are all supplied without a floor. Wall panels are installed on top of N.S.F. listed vinyl sealers provided. The sizes available are as follows: 6' wide x 6' long, 6' wide x 8' long, 6' wide x 10' long, 6' wide x 12' long, 8' wide x 8' long, and 8' wide x 10' long.

COMBINATION KOLD LOCKER™ COMPARTMENT SIZES:

The Kold Locker™ combination cooler/freezer line is available in 6'-7" high and 7'-7" high models and are all supplied complete with a floor. All models are available in two widths, 6' wide and 8' wide. The overall length of the combination Kold Locker™ is determined by the size of the cooler compartment and freezer compartment desired. The available sizes are the same as available in their mating single compartment models.

EXAMPLE #1: If you have determined that you need a 6' wide combination model your choices for cooler and freezer compartment lengths are 6', 8', 10', and 12'. Therefore, if you desire both cooler and freezer to have lengths of 8' your overall combination dimensions will be 6' wide x 16' long.

EXAMPLE #2: If you have determined that you need an 8' wide combination model your choices for cooler and freezer compartment lengths are 6', 8', and 10'. Therefore, if you desire the cooler to be 8' long and the freezer to be 6' long, your overall combination dimensions will be 8' wide x 14' long.