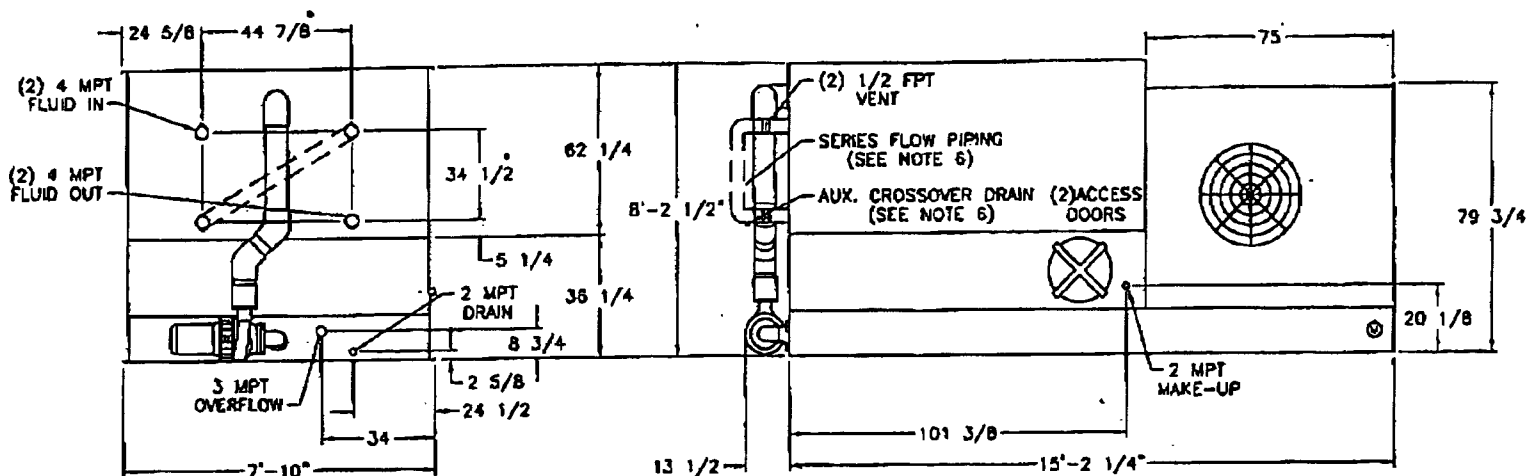


# Existing Unit LRW 68-4-2



## NOTES:

1. (M) - FAN MOTOR LOCATION
2. MAKE-UP WATER PRESSURE 20 psi MIN. 50 psi MAX.
3. 3/40 DIA. MOUNTING HOLES. REFER TO RECOMMENDED STEEL SUPPORT DRAWING.
4. \* APPROXIMATE DIMENSIONS. DO NOT USE FOR PRE-FABRICATION OF CONNECTING PIPING.
5. MPT DENOTES MALE PIPE THREAD, FPT DENOTES FEMALE PIPE THREAD, BFW DENOTES BEVELED FOR WELDING.
6. SERIES FLOW PIPING AND AUX. CROSSOVER DRAIN ARE BY OTHERS.

WEIGHTS			NO. SHIPPING SECTIONS
SHIPPING	OPER.	HEAVIEST SECTION	
10860	17750	10860	1

EVAPCO MODEL (2) LRW 68-4-2 CLOSED CIRCUIT COOLERS

CERTIFIED FOR HONIRON CORPORATION PROJECT PORTABLE COOLER

CUSTOMER ORDER NO. 00298.01 EVAPCO NO. M014877-78

CAPACITY EACH UNIT 109 GPM OF WATER 120°F IN 85°F OUT 80°F E.W.D.

FAN MOTOR HP EACH UNIT (1) 30 ELEC. SPEC. 460/60/3

PUMP MOTOR HP (1) 2 ELEC. SPEC. 460/60/3

REMARKS EACH UNIT ARRANGED FOR SERIES FLOW. COIL PRESSURE DROP 1.4 PSI. DRIVES SIZED FOR 0" ESP.



**CLOSED CIRCUIT  
COOLER**

AVT/dah 2/21/01

**WV080910ERA-SF**