

## 2004 Carrier Indoor Water-Cooled Reciprocating Chiller – 60 Tons

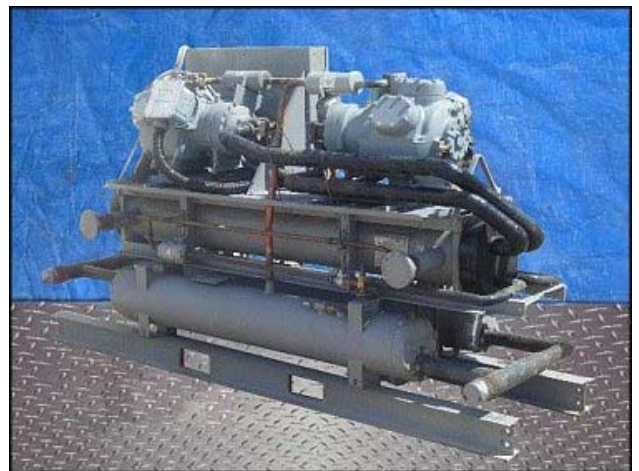
Mfg: Carrier

Model: 30HK-060-D-510

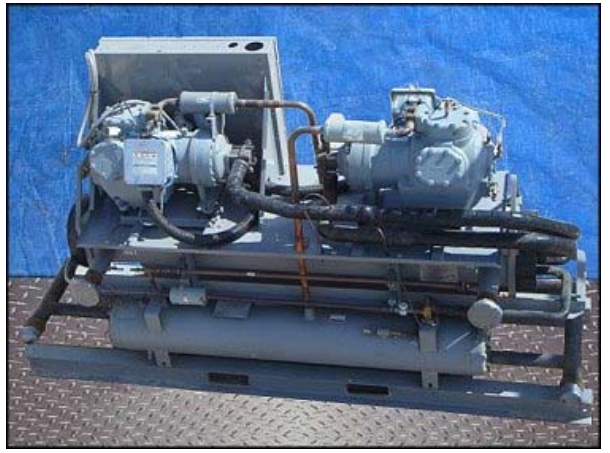
Stock No: ADSP401.30

Serial No: 2504Q04044

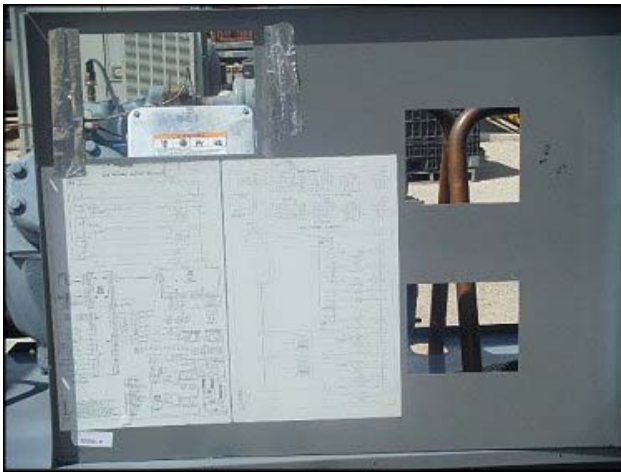
2004 Carrier Indoor Water-Cooled Reciprocating Chiller. Model: 30HK-060-D-510. S/N: 2504Q04044. Refrigerant: R-22. Capacity: 60 nominal tons. 1<sup>st</sup> Carlyle compressor: model no. 06E6175310. S/N: 2504U00371. RLA 83.0, LRA 446, 45 lbs., 208 / 230V 60 Hz, 3 phase. 2<sup>nd</sup> Carlyle compressor: model no. 06E6175310. S/N: 2504U00366. RLA 83.0, LRA 446, 45 lbs., 208 / 230V 60 Hz, 3 phase. 1<sup>st</sup> heat exchanger: National Bd. no. 13858. Model: 30HK410010. S/N: 2104X05871. Tube side MAWP: 235 psi @ 150°F., MDMT: 0°F @ 235 psi. Shell side exempt per U-1(c)(2)(f). 2<sup>nd</sup> heat exchanger: National Bd. no. 13818. Model: 09RP027269. S/N: 2104X05952. Shell side MAWP: 385 psi @ 150°F., MDMT: 32°F @ 385 psi. 3<sup>rd</sup> heat exchanger: National Bd. no. 13818. Model: 09RP027229. S/N: 2104X05954. Shell side MAWP: 385 psi @ 150°F., MDMT: 32°F @ 385 psi. In addition to energy saving shell-in-tube cooler and condensers, other features include: dual and independent refrigeration circuits and high-pressure cutout / loss of charge, low-pressure safety protection. Approximate operating weight: 3,340 lbs. Inlets: (1) 2 ¾ in. flange port, (1) 2 ½ in. port. Outlets: (1) 2 ¾ in. flange port, (1) 2 ½ in. port, (2) ¾ MNPT drain ports. Approximate overall dimensions: 9 ft. 9 in. L x 2 ft. 11 in. W x 5 ft. 4 ½ in. H. (ACN263).



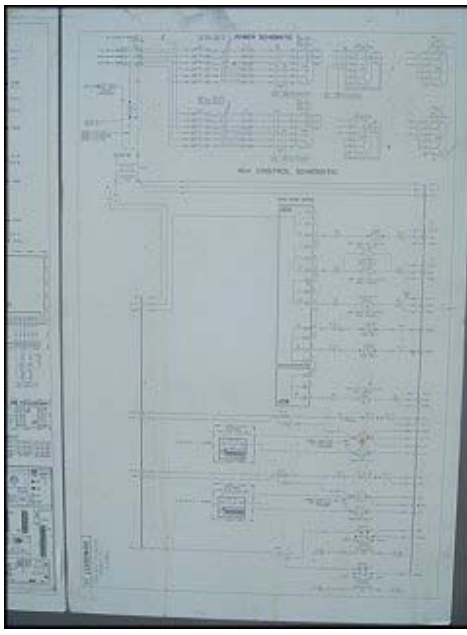
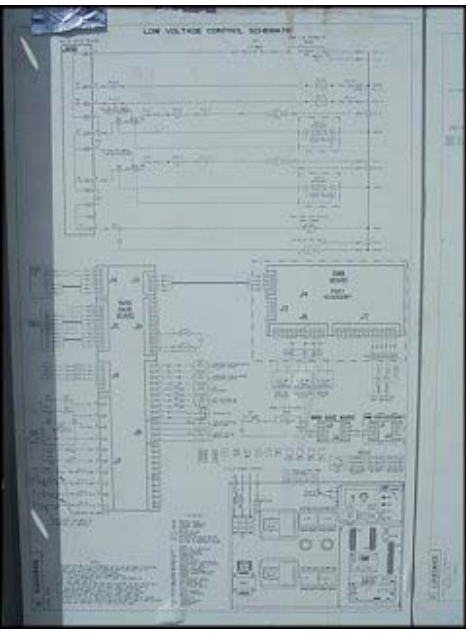














**Carrier**  
A United Technologies Company

MODEL 30HK-040-D-510-  
SERIAL 2504004044

FACTORY CHARGED DESIGN/TEST PRESSURE GAGE

QTY	VOLTS AC	PH	HZ	RLA	LRA	REFRIG. SYSTEM	DESIGN/TEST PRESSURE GAGE
COMP 1	208/230	3	60	83.0	446	45 LBS	20.4 kg HIGH PSI 385 kPa 2654
COMP 1	208/230	3	60	83.0	446	45 LBS	20.4 kg LOW PSI 225 kPa 1620

FAN MOTORS QTY VOLTS AC PH HZ FLA HP KW OUT

OUTDOOR

INDOOR

OTHER

HEATERS

POWER SUPPLY 208/230 VOLTS 3 60 HZ CKT MIN CIRCUIT AMP 250 MAX OVERCURRENT PROTECTIVE DEVICE AMP

PERMISSIBLE WIND SPEED FT MIN MAX 187 MIN 1 186.8 250

NOT SUITABLE FOR OUTDOOR USE

MADE IN U.S.A.

**Carrier**

13818

CERTIFIED BY CARRIER MEXICO S.A. DE C.V.

MAX. ALLOWABLE WORKING PRESS.

SHELL SIDE		TUBE SIDE	
W	385 PSI AT 150 °F	X	PSI AT X °F
-	2654 kPa AT 65.5 °C	X	kPa AT X °C

MIN. DESIGN METAL TEMP.

32 °F AT 385 PSI	X	°F AT X PSI
0 °C AT 2654 kPa	X	°C AT X kPa

YEAR BUILT 2004 SERIAL 2104X05952

MODEL 09RP027269 STATE OR C.R.N. K4948.5

SHELL SIDE EXEMPT PER U-1 (c)(2)(f)

PNEUMATIC TEST PRESSURE 2920 KPA

MADE IN MEXICO

13818

CERTIFIED BY CARRIER MEXICO S.A. DE C.V.

MAX. ALLOWABLE WORKING PRESS.

SHELL SIDE		TUBE SIDE	
W	385 PSI AT 150 °F	X	PSI AT X °F
-	2654 kPa AT 65.5 °C	X	kPa AT X °C

MIN. DESIGN METAL TEMP.

32 °F AT 385 PSI	X	°F AT X PSI
0 °C AT 2654 kPa	X	°C AT X kPa

YEAR BUILT 2004 SERIAL 2104X05952

MODEL 09RP027269 STATE OR C.R.N. K4948.5

SHELL SIDE EXEMPT PER U-1 (c)(2)(f)

PNEUMATIC TEST PRESSURE 2920 KPA

MADE IN MEXICO 99NA506763

**ACEPTADO**

13858

CERTIFIED BY CARRIER MEXICO S.A. DE C.V.

MAX. ALLOWABLE WORKING PRESS.

SHELL SIDE		TUBE SIDE	
W	X PSI AT X °F	235	PSI AT 150 °F
-	X kPa AT X °C	1620	kPa AT 65.5 °C

MIN. DESIGN METAL TEMP.

X °F AT X PSI	0	°F AT 235 PSI
X °C AT X kPa	-17.7	°C AT 1620 kPa

YEAR BUILT 2004 SERIAL 2104X05971

MODEL 30HK410010 STATE OR C.R.N.

SHELL SIDE EXEMPT PER U-1 (c)(2)(f)

PNEUMATIC TEST PRESSURE 1782 KPA

MADE IN MEXICO 99NA506763

**Carlyle** MODEL NUMBER 06E6175310

6EACBC1U2H60 BTR D475314

UOLTS	PH	HZ	UOLTS (MIN/MAX)	RLA	LRA	SYN RPM
208/230	3	60	187/264	112.0	446.0	1800
400	3	50	342/457	56.0	223.0	1500
460	3	60	414/528	56.3	223.0	1800

TEST (PSI/KPA) LS 225/1553 HS 450/3105

MADE IN U.S.A.

S/N 2504U00371

**Carlyle** MODEL NUMBER 06E6175310

6EACBC1U2H60 BTR D475314

UOLTS	PH	HZ	UOLTS (MIN/MAX)	RLA	LRA	SYN RPM
208/230	3	60	187/264	112.0	446.0	1800
400	3	50	342/457	56.0	223.0	1500
460	3	60	414/528	56.3	223.0	1800

TEST (PSI/KPA) LS 225/1553 HS 450/3105

MADE IN U.S.A.

S/N 2504U00366