

APV Gaulin MC45 Homogenizer – 5000 PSI

Mfg: APV Gaulin

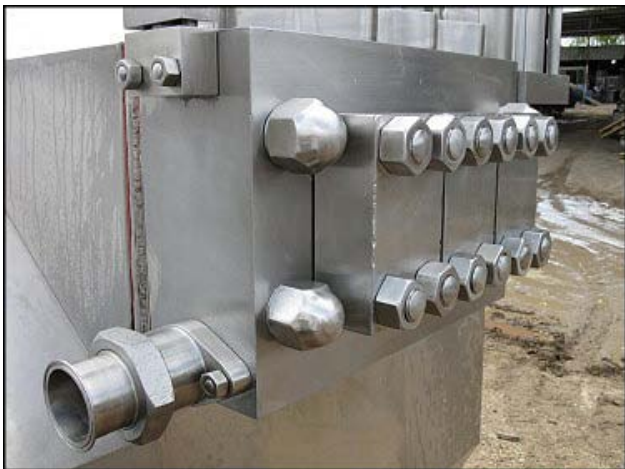
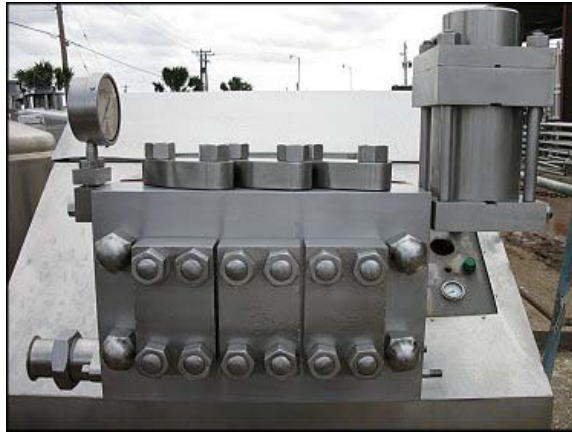
Model: 2500-MC45-5TPS

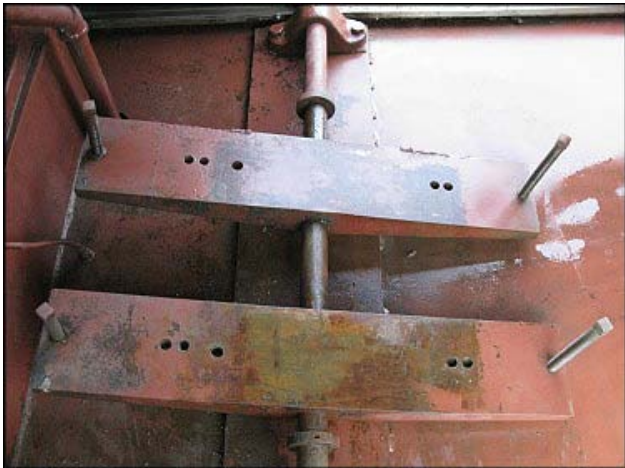
Stock No: DGPD162.248a

Serial No: 18910936

APV Gaulin Homogenizer MC45 Series. Homogenizer Head Model: 2500-MC45-5TPS. The base unit formerly had a Model 6000 804 head that was removed, and Genemco installed the 2500-MC45-5TPS head. Maximum capacity: 2500 GPH. Maximum working pressure: 5000 psi. Pressure and flowrate can be modified/adjusted to suit your needs. Tapered seat poppet valve cylinders. Single-stage hydraulic valve assembly. 2-1/4 in. diameter plungers. Twin herringbone gear drive. Motor pulley diameter: 10-1/4 in. Gear pulley diameter: 24 in. Ratio: 2.3. Hydraulic Pump with Baldor Industrial Motor, 1 hp, 3 phase. Hydraulic Pump with Baldor Industrial Motor, 3/4 hp, 3 phase. Inlets: (1) 3 in. dia. ACME fitting. Outlets: (1) 2 in. dia. S-Line fitting. Overall dimensions: 8 ft. 6 in. L x 4 ft. 6 in. W x 5 ft. 11 in. H.









PH 15-5 957790
 LW 1341
 ARMC0 90695

PH 15-5
 LW 1341
 ARMC0

957790
 90695

APV GAULIN INC.
 EVERETT, MASSACHUSETTS

OIL SPECIFICATION

USE AGMA 5
 VISCOSITY AT 40°C—198/220cSt
 VISCOSITY AT 100°F-1000/1165 SUS
 VISCOSITY INDEX _____ 95
 POUR POINT _____ 10°F
 FLASH POINT _____ 450°F


6000 804-1,5TPN
 1500
 18910936

BALDOR
INDUSTRIAL MOTOR

CAT. NO.	M3546-5		
SPEC.	35A11-292		
FRAME	56	SER.	F994
H.P.	1	TE	
VOLTS	575		
AMPS	1.4		
R.P.M.	1725		
HZ	60	PH	3 CLASS B
SER. F.	1.15	DES	B CODE J
NEMA NOM. EFF.	75 %	PF	74 %
RATING	40C AMB-CONT		

BALDOR ELECTRIC CO.
100 SOUTH ST.
NEW HAVEN, CT. U.S.A.

M3542-5
34A61-908
56 W197
.75 TE
575
1.2
1725
60 3 B
1.25 B B
100 AMB CONT
SER. F. 1.4



Elmar
FILTER

MODEL LRVH803B
CARTRIDGE PWA80C50T
REPLACE CARTRIDGE WHEN CLOGGED
ELMAR FILTER CORPORATION
NEW HAVEN, CONN.