

1991 Trane Air Cooled Liquid Chiller- 20 Ton

Mfg: Trane

Model: RAUCC20 GBD10AF2

Stock No: HDFD234.20

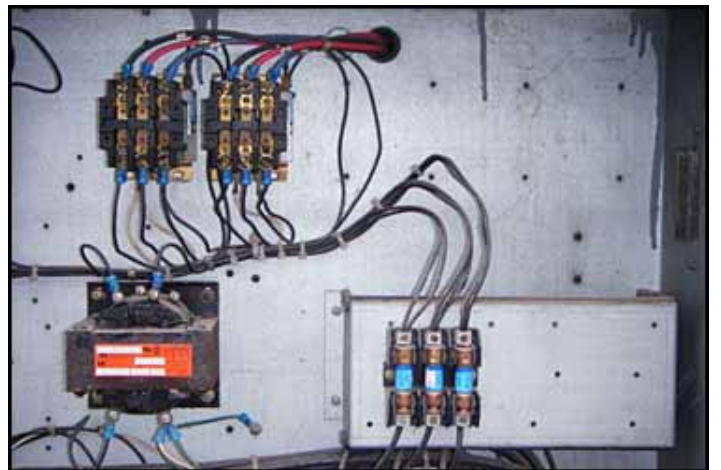
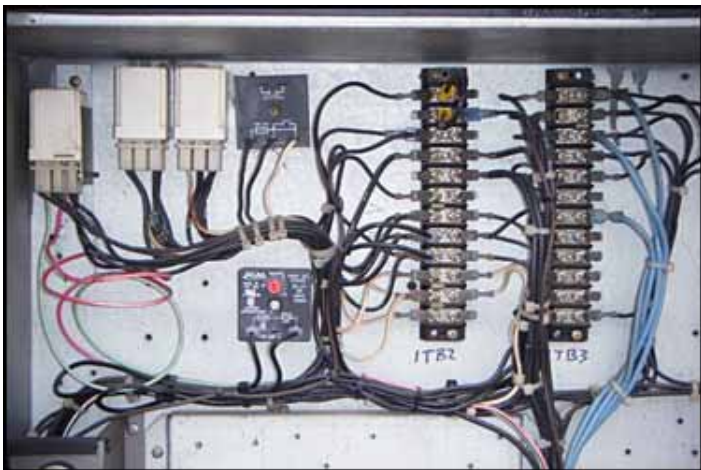
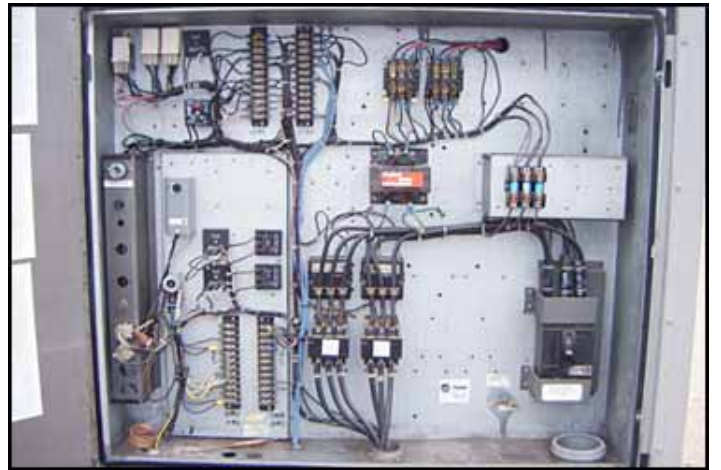
Serial No: J91E80946

1991 Trane Air Cooled Liquid Chiller- 20 Ton. Refrigerant: R-22. Design pressure: 450 psig. Test pressure (hi/lo): 563/300 psig. Power supply: 230V, 60 Hz, 3 phase. (2) Trane 3-D Scroll Compressors, power supply: 200/230 V, 41.4 RLA (ea), 247 LRA (ea), 60 Hz, 3 phase. York Chiller Barrel, shell side MAWP: 150 psi @ -20 to 150°F, head radius: flat, tube side MAWP: 225 psi @ -20 to 150°F. (2) Fan Motors, 1 hp, 200/230 V, 4.1 FLA (ea), 60 Hz, 3 phase. Inlets: (1) 3 in. dia. NPT port. Outlets: (1) 3 in. dia. NPT port. Overall dimensions: 8 ft. 5 in. L x 7 ft. 6 W x 7 ft. H. (ACN157a).











TRANE

REFRIGERATION MACHINE FOR OUTDOOR INSTALLATION ONLY
SEE ADDITIONAL NAMEPLATE IN GAS HEAT SECTION WHEN USED

MODEL NO. _____

SERIAL NO. _____

REFRIGERATION MACHINE FOR OUTDOOR INSTALLATION ONLY
SEE ADDITIONAL NAMEPLATE IN GAS HEAT SECTION WHEN USED

RATED VOLTAGE _____ HZ _____

UTILIZATION VOLTAGE RANGE _____

NOMINAL SYSTEM VOLTAGES _____

MANUALS

UNIT

PROFESSOR

TRANE

TRANE

MODEL NO. _____

SERIAL NO. _____

REFRIGERATION MACHINE FOR OUTDOOR INSTALLATION ONLY
SEE ADDITIONAL NAMEPLATE IN GAS HEAT SECTION WHEN USED

RATED VOLTAGE _____ HZ _____

UTILIZATION VOLTAGE RANGE _____

NOMINAL SYSTEM VOLTAGES _____

