

Frick RXB-39 Rotary Screw Compressor - 75 HP

Mfg: Frick

Model: RXB-39

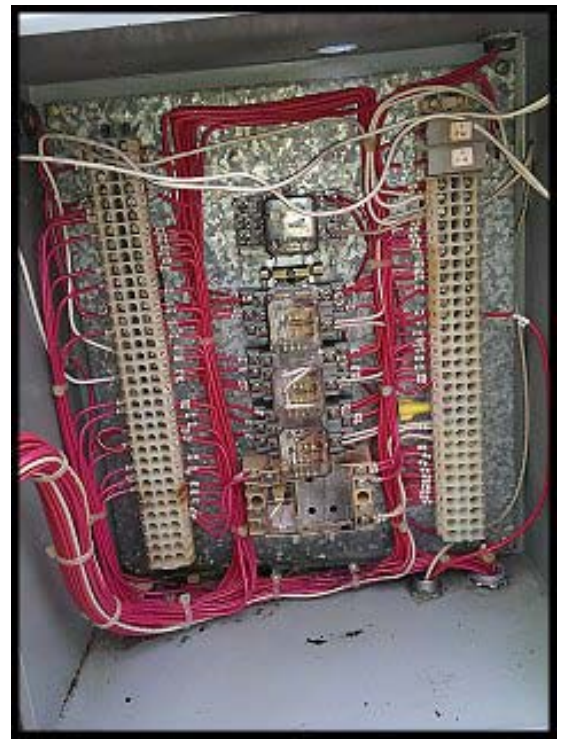
Stock No.: **SDFP143.35**

Serial No.: S0110GFENLHAA3

Frick Rotary Screw Compressor Unit, model RXB-39, serial S0110GFENLHAA3, SO 207444-04, refrigerant R717 Ammonia, max 3600 RPM, max design pressure 300 PSIG, Waynesboro PA USA. Compressor model: XJR120L0098FR, NH3/R22, 2.5-5.0 Vi, max speed 4700 RPM, max pressure 362 PSIG / 2500 kPa. Nominal rating: 78.9 TR / 94.5 BHP at +20F suction / 95F condensing (ammonia). At -40F suction: 17.2 TR / 62.5 BHP (ammonia). Frick oil filter housing, serial MC-88670, year 1998, MAWP: 350 PSIG at -20/+200F. Toshiba High Efficiency World Energy 3-Phase Induction Motor: 75 HP, 230/460V, 175/87.5 amps, 60 Hz, 1.15 SF, 3530 RPM, 364TS frame, 208V at 193 amps, 66 HP at 60 amps on 575V, Houston TX USA. Frick RXB Micro control panel, runtime 146 hours. Overall dimensions: 8 ft. L x 4 ft. 9 in. W x 6 ft. 8 in. H.







Pictures prior to removal:



